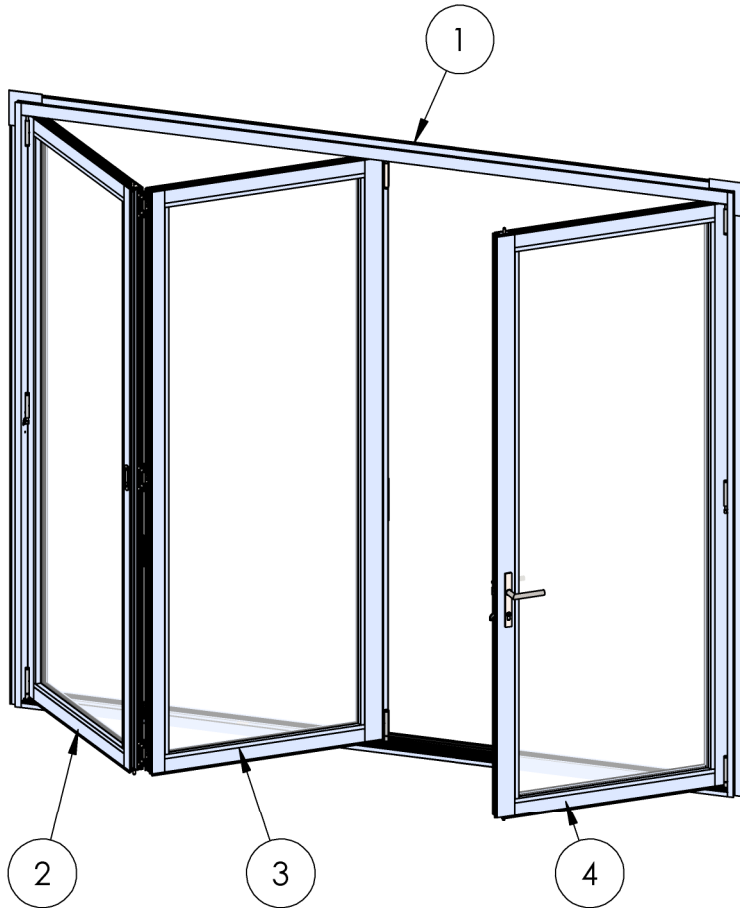


# ASSEMBLY / PARTS LIST (B.O.M.)

**Series: 3600-T**  
**Type: 2L1R and 1L2R Configuration**



## TABLE OF CONTENTS

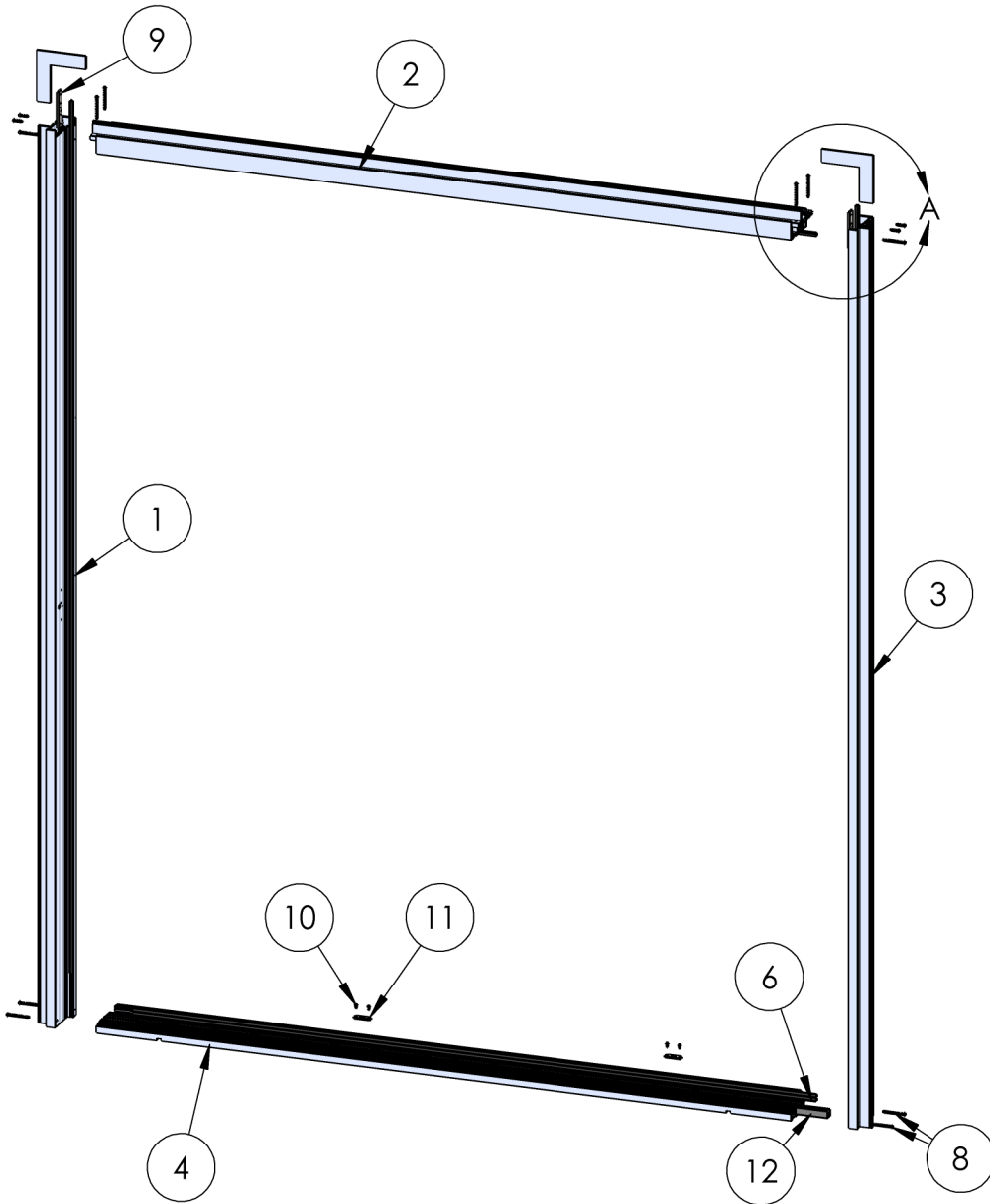
ITEM NO.	PART NUMBER	QTY.	PAGE #
1	Frame Assembly	1	2
2	Panel 1 Assembly	1	3-4
3	Panel 2 Assembly	1	5-6
4	Panel 3 Assembly	1	7-8

### NOTES:

1. 2L1R Configuration shown
2. Out-Swing Door shown
3. Relative to the exterior, numbering of panels is from left to right.
4. Flush pulls for in-swing panel shown.

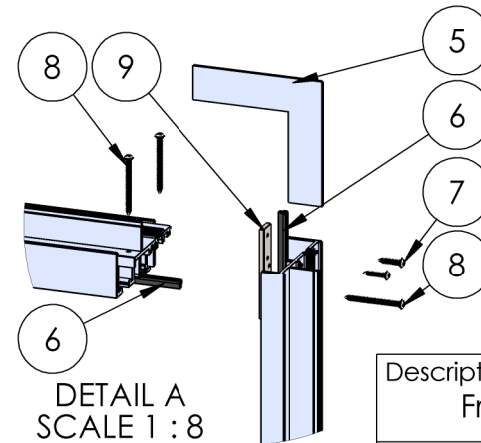
Description Table of Contents	
File Name Series 3600-T 2L1R and 1L2R Assembly	REV <b>A</b>
Released 11/4/2022	SHEET 1 OF 8

# ASSEMBLY / PARTS LIST (B.O.M.)



EXTRUSIONS			
ITEM NO.	PART NUMBER	DESCRIPTION	QTY.
1	3603	Left Jamb	1
2	3601	Head	1
3	3603	Right Jamb	1
4	3602	Sill	1

HARDWARE			
ITEM NO.	PART NUMBER	DESCRIPTION	QTY.
5	18629	Nail-Fin Corner (For Nail-Fin Door)	2
6	25059	Q-Lon Foam Seal	5
7	20350	#10 PHP Screw, 1 in.	4
8	25075	#10 PHP Screw, 2.5 In	10
9	25585	Jamb Hinge Back Up Plate	2
10	20275	#10 FHP-A-UC Screw, .5 in., Clear	4
11	27321	Shoot Bolt Strike Plate	2
12	25685	Polypropylene Channel	1



Description  
Frame Assembly/B.O.M.

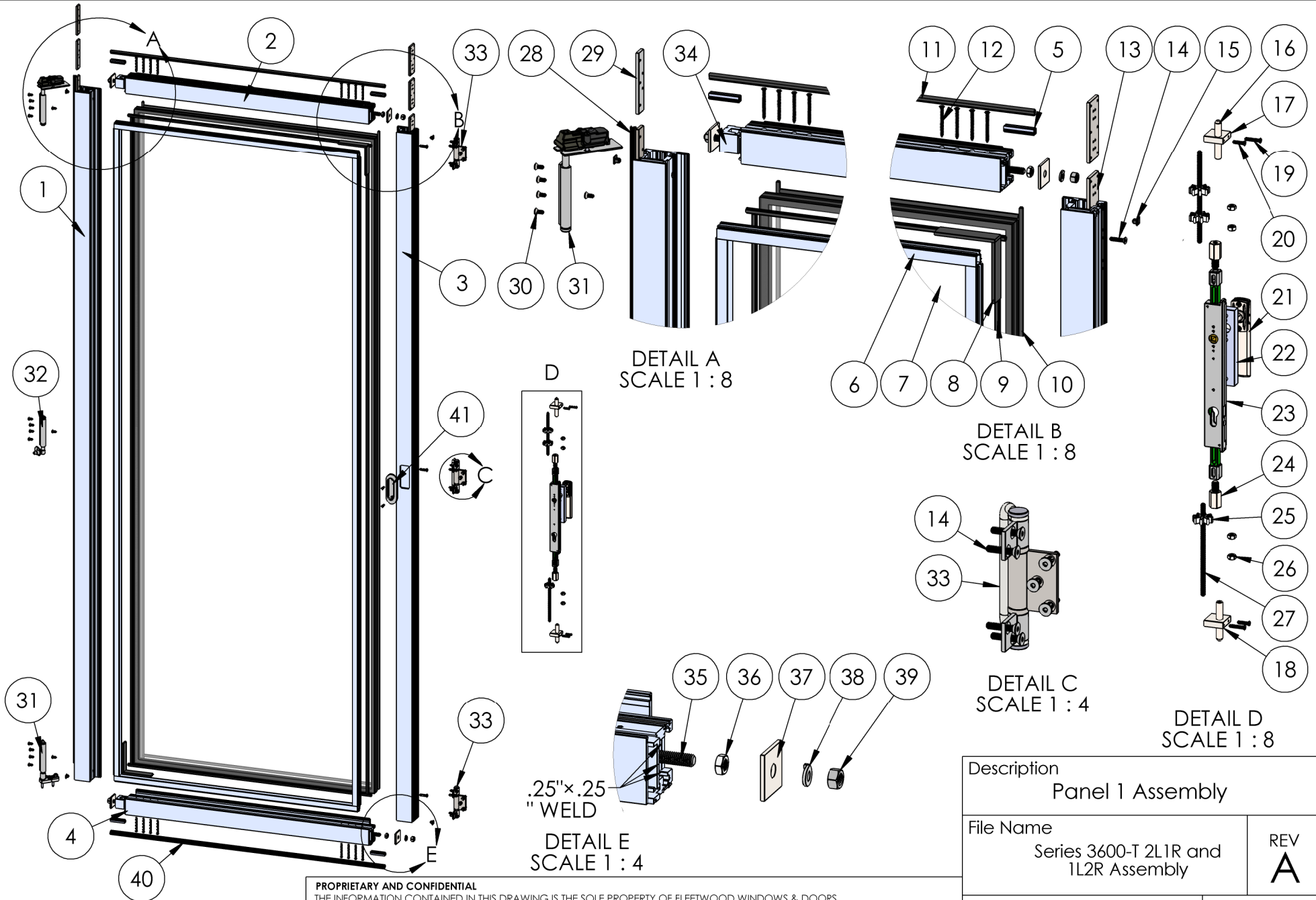
File Name  
Series 3600-T 2L1R and  
1L2R Assembly

REV  
**A**

Released 11/4/2022

SHEET 2 OF 8

# ASSEMBLY / PARTS LIST (B.O.M.)



DETAIL A  
SCALE 1 : 8

DETAIL B  
SCALE 1 : 8

DETAIL C  
SCALE 1 : 4

DETAIL D  
SCALE 1 : 8

.25" x .25"  
" WELD

DETAIL E  
SCALE 1 : 4

PROPRIETARY AND CONFIDENTIAL  
THE INFORMATION CONTAINED IN THIS DRAWING IS THE SOLE PROPERTY OF FLEETWOOD WINDOWS & DOORS.  
ANY REPRODUCTION IN PART OR AS A WHOLE WITHOUT THE WRITTEN PERMISSION OF FLEETWOOD WINDOWS & DOORS IS PROHIBITED.

Description Panel 1 Assembly	
File Name Series 3600-T 2L1R and 1L2R Assembly	REV <b>A</b>
Released 11/4/2022	SHEET 3 OF 8

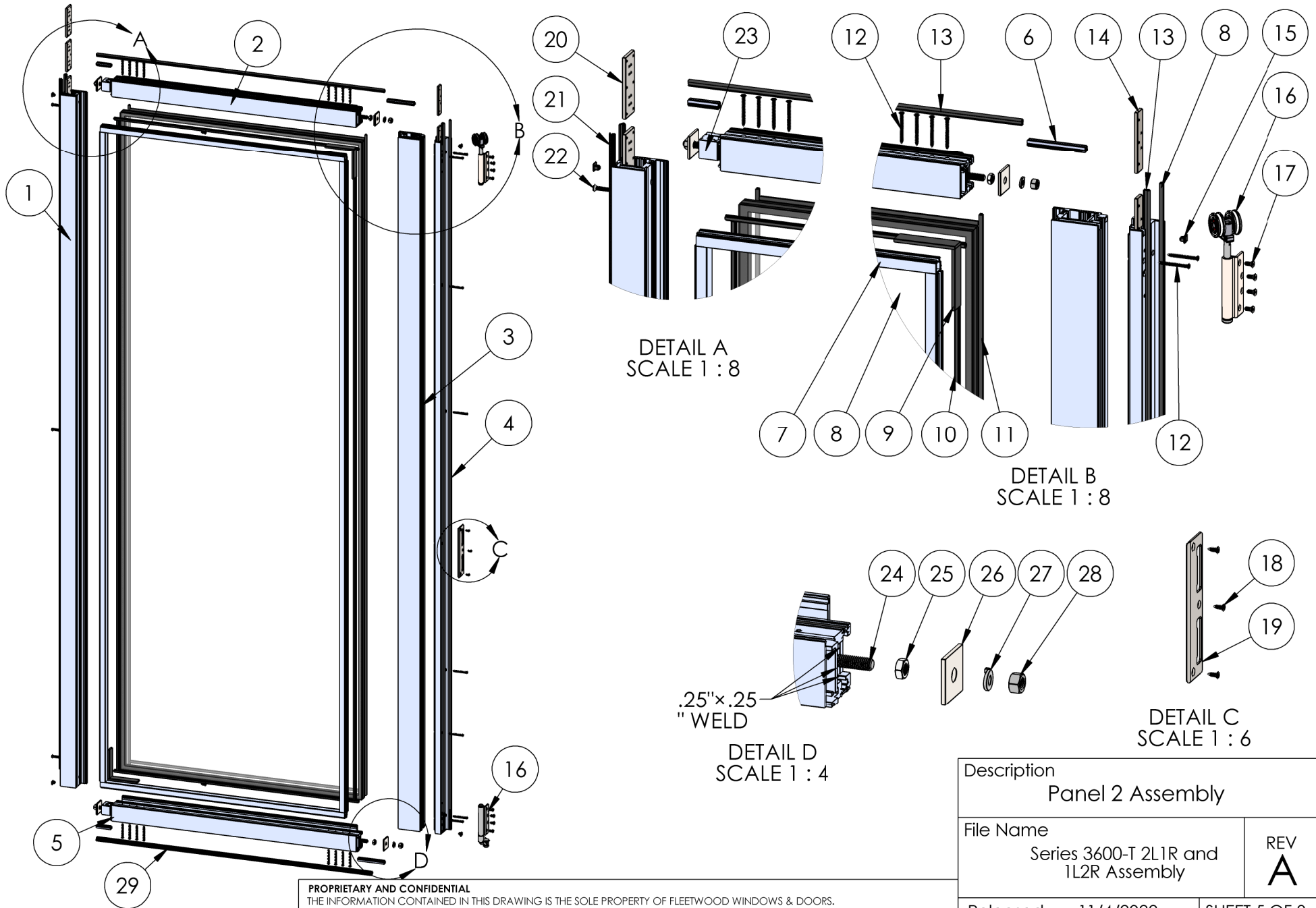
# ASSEMBLY / PARTS LIST (B.O.M.)

Extrusions				Hardware			
ITEM NO.	PART NUMBER	DESCRIPTION	QTY.	ITEM NO.	PART NUMBER	DESCRIPTION	QTY.
1	3604	Left Stile	1	26	24893	1/4-20 Hex Nut	4
2	3604	Bottom Rail	1	27	27067	1/4-20 Threaded Rod	2
3	3604	Right Stile	1	28	25059	Q-Lon Foam Seal	1
4	3604	Top Rail	1	29	25582	Hinge Back Up Plate	3
5	3916	Seal Clip	4	30	25486,25487	#10-32 FH Torx Screw, 0.5", T25 (SS, Black)	15
6	3907	1" Glass Stop (Shown)	4	31	25638,25639	Pivot Set (S.S., Black)	1
Hardware				32	25640,25641	Jamb Pivot (S.S., Black)	1
ITEM NO.	PART NUMBER	DESCRIPTION	QTY.	33	25646,25647, 25648,25649	Hinge Handle Set (S.S., Black) Hinge Set (in-swing only)(S.S., Black)	1
7	IG Glass	Glass	1	34	25571	Corner Block	4
8	27313	Setting Block 4"x3/16"x1"	4	35	25668	.375-16 Hex Head Cap Screw, 1.625"	4
9	25031	Bulb Vinyl-Large	4	36	25176	.375-16 Stainless Steel Hex Nut, .5625 Wt, .218 Ht	4
10	25199	Mini Bulb Vinyl	4	37	25573	Back up Plate Corner Block	4
11	25058	Q-Lon Foam Seal (at Head)	1	38	25024	.375 Split Lock Washer	4
12	20258	#8 FHP Screw, 2"	16	39	25023	.375-16 Stainless Steel Hex Nut	4
13	25586	Hinge Back Up Plate	3	40	25683	Foam Seal	1
14	25488,25489	#10-32 FH Torx Screw, 1", Size T25 (S.S., Black)	24	41	25654	Flush Pull with screws (in-swing only)	1
15	26684	Bottom and Top Clip Cap	4				
16	27055	Shoot Bolt Cap	2				
17	27083	Top Shoot Bolt Guide	1				
18	27084	Bottom Shoot Bolt Guide	1				
19	26916, 26917	#8-32 Torx FH Screw, 1.0 in. (S.S., Black)	2				
20	26914, 26915	#8-32 Torx FH Screw, 0.75 in. (S.S., Black)	2				
21	25656,25657	DPL Non-Locking Handle (S.S., Black)	1				
22	26837	Aluminum Lock Spacer	1				
23	25662	DPL Lock Body	1				
24	27066	M10 to 1/4-20 Thread Adapter	2				
25	25566	Shoot Bolt Rod Guide	3				

**PROPRIETARY AND CONFIDENTIAL**  
THE INFORMATION CONTAINED IN THIS DRAWING IS THE SOLE PROPERTY OF FLEETWOOD WINDOWS & DOORS.  
ANY REPRODUCTION IN PART OR AS A WHOLE WITHOUT THE WRITTEN PERMISSION OF FLEETWOOD WINDOWS & DOORS IS PROHIBITED.

Description Panel 1 B.O.M.	
File Name Series 3600-T 2L1R and 1L2R Assembly	REV <b>A</b>
Released 11/4/2022	SHEET 4 OF 8

# ASSEMBLY / PARTS LIST (B.O.M.)



DETAIL A  
SCALE 1 : 8

DETAIL B  
SCALE 1 : 8

DETAIL C  
SCALE 1 : 6

.25"x.25"  
"WELD  
DETAIL D  
SCALE 1 : 4

**PROPRIETARY AND CONFIDENTIAL**  
THE INFORMATION CONTAINED IN THIS DRAWING IS THE SOLE PROPERTY OF FLEETWOOD WINDOWS & DOORS.  
ANY REPRODUCTION IN PART OR AS A WHOLE WITHOUT THE WRITTEN PERMISSION OF FLEETWOOD WINDOWS & DOORS IS PROHIBITED.

Description Panel 2 Assembly	
File Name Series 3600-T 2L1R and 1L2R Assembly	REV <b>A</b>
Released 11/4/2022	SHEET 5 OF 8

# ASSEMBLY / PARTS LIST (B.O.M.)

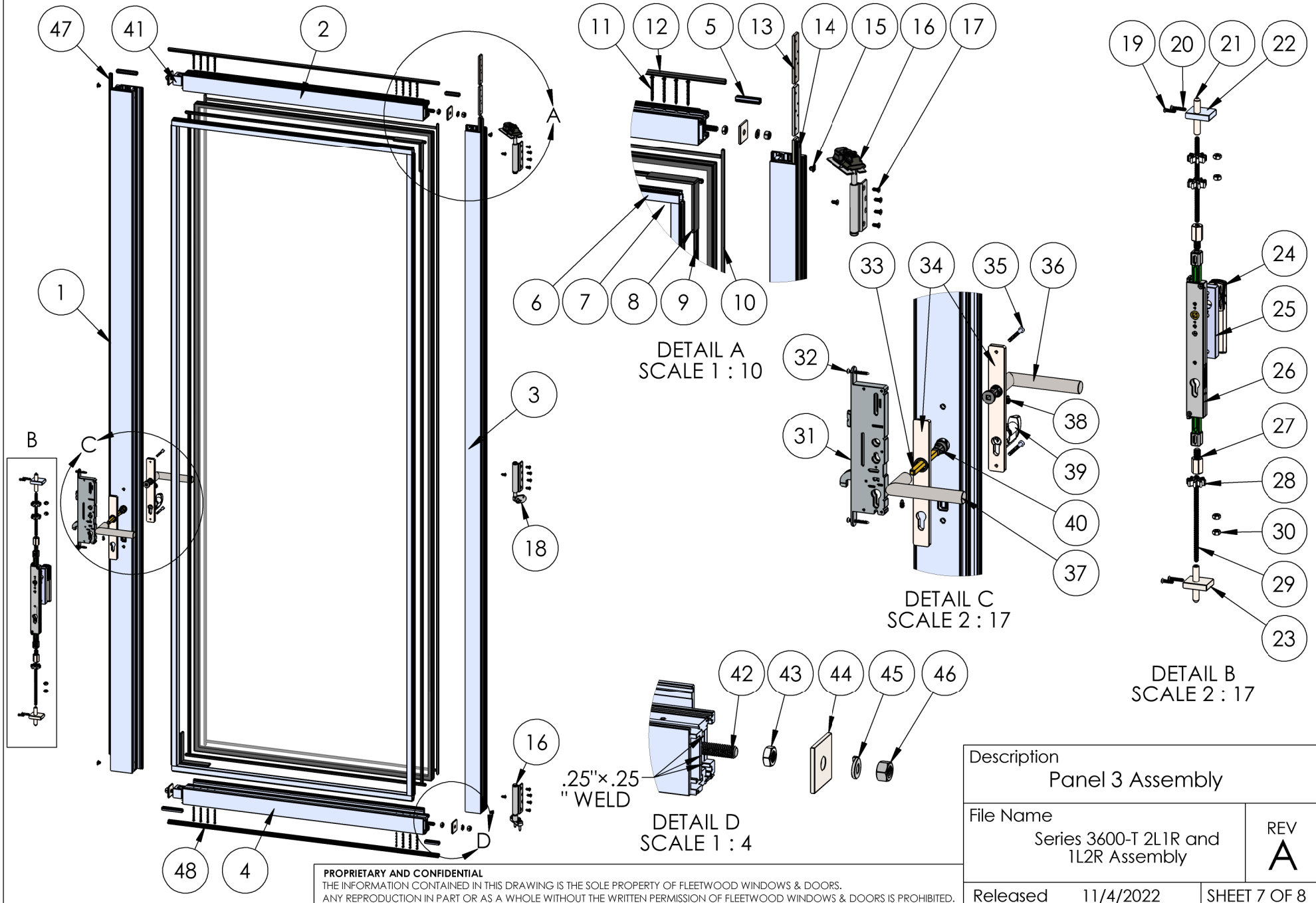
Extrusions			
ITEM NO.	PART NUMBER	DESCRIPTION	QTY.
1	3604	Left Stile	1
2	3604	Top Rail	1
3	3205	Inactive Stile	1
4	3206	Astragal	1
5	3604	Bottom Rail	1
6	3916	Seal Clip	4
7	3907	1" Glass Stop (Shown)	4

Hardware			
ITEM NO.	PART NUMBER	DESCRIPTION	QTY.
8	IG Glass	Glass	1
9	27313	Setting Block 4"x3/16"x1"	4
10	25031	Bulb Vinyl-Large	4
11	25199	Mini Bulb Vinyl	5
12	20258	#8 FHP Screw, 2"	24
13	25058	Q-Lon Foam Seal (at Head and Astragal)	2
14	25582	Hinge Back Up Plate	2
15	26684	Bottom and Top Clip Cap	4
16	25642,25643	End Hanger Set (S.S., Black)	1
17	25486,25487	#10-32 FH Torx Screw, 0.5", T25 (SS, Black)	10
18	20240	#8 FHP - A - UC, 0.5", SS, Clear	3
19	24993	Latch-Deadbolt Strike Plate	1
20	25586	Hinge Back Up Plate	3
21	25059	Q-Lon Foam Seal	2
22	25488,25489	#10-32 FH Torx Screw, 1", Size T25 (S.S., Black)	3

Hardware			
ITEM NO.	PART NUMBER	DESCRIPTION	QTY.
23	25571	Corner Block	4
24	25668	.375-16 Hex Head Cap Screw, 1.625"	4
25	25176	.375-16 Stainless Steel Hex Nut, .5625 Wt, .218 Ht	4
26	25573	Back up Plate Corner Block	4
27	25024	.375 Split Lock Washer	4
28	25023	.375-16 Stainless Steel Hex Nut	4
29	25683	Foam Seal	1

Description Panel 2 B.O.M.	
File Name Series 3600-T 2L1R and 1L2R Assembly	REV <b>A</b>
Released 11/4/2022	SHEET 6 OF 8

# ASSEMBLY / PARTS LIST (B.O.M.)



**PROPRIETARY AND CONFIDENTIAL**  
THE INFORMATION CONTAINED IN THIS DRAWING IS THE SOLE PROPERTY OF FLEETWOOD WINDOWS & DOORS.  
ANY REPRODUCTION IN PART OR AS A WHOLE WITHOUT THE WRITTEN PERMISSION OF FLEETWOOD WINDOWS & DOORS IS PROHIBITED.

Description Panel 3 Assembly	
File Name Series 3600-T 2L1R and 1L2R Assembly	REV <b>A</b>
Released 11/4/2022	SHEET 7 OF 8

# ASSEMBLY / PARTS LIST (B.O.M.)

Extrusions			
ITEM NO.	PART NUMBER	DESCRIPTION	QTY.
1	3205	Lock Stile	1
2	3604	Top Rail	1
3	3604	Right Stile	1
4	3604	Bottom Rail	1
5	3916	Seal Clip	4
6	3907	1" Glass Stop (Shown)	2

Hardware			
ITEM NO.	PART NUMBER	DESCRIPTION	QTY.
7	IG Glass	Glass	1
8	27313	Setting Block 4"x3/16"x1"	4
9	25031	Bulb Vinyl-Large	4
10	25199	Mini Bulb Vinyl	4
11	20258	#8 FHP Screw, 2"	16
12	25058	Q-Lon Foam Seal (at Head)	1
13	25582	Hinge Back Up Plate	3
14	25059	Q-Lon Foam Seal	1
15	26684	Bottom and Top Clip Cap	4
16	25638,25639	Pivot Set (S.S., Black)	1
17	25486,25487	#10-32 FH Torx Screw, 0.5", T25 (SS, Black)	15
18	25640,25641	Jamb Pivot (S.S., Black)	1
19	26914, 26915	#8-32 Torx FH Screw, 0.75 in. (S.S., Black)	2
20	26916, 26917	#8-32 Torx FH Screw, 1.0 in. (S.S., Black)	2
21	27055	Shoot Bolt Cap	2
22	27085	Top Shoot Bolt Guide	1
23	27086	Shoot Bolt Guide- Bottom Swinging	1
24	25656,25657	DPL Non-Locking Handle (S.S., Black)	1
25	26837	Aluminum Lock Spacer	1
26	25662	DPL Lock Body	1
27	27066	M10 to 1/4-20 Thread Adapter	2
28	25566	Shoot Bolt Rod Guide	3

Hardware			
ITEM NO.	PART NUMBER	DESCRIPTION	QTY.
29	27067	1/4-20 Threaded Rod	2
30	24893	1/4-20 Hex Nut	4
31	25758	Yale Latch	1
32	20252	#8 FHP Screw, 1.5 in.	2
33	26195	Spindle	1
34	25207, 25398, 27034, 27033	Escutcheon Plates Exterior and Interior (Active- S.S., Black ; Thumb-turn only- S.S., Black)	2
35	25342	#10-32 FHP Screw, 2.25"	2
36	26190	FSB 1076 LH Lever (Default)	1
37	26189	FSB 1076 RH Lever (Default)	1
38	(Shipped with Handle)	Socket Set Screw .250-20, .375"	2
39	23204, 24010, 25254, 24010, 23225, 24029	Cylinder (KA, KD, SS, BL, Thumbturn)	1
40	26212	Lever Adaptor	2
41	25571	Corner Block	4
42	25668	.375-16 Hex Head Cap Screw, 1.625"	4
43	25176	.375-16 Stainless Steel Hex Nut, .5625 Wt, .218 Ht	4
44	25573	Back up Plate Corner Block	4
45	25024	.375 Split Lock Washer	4
46	25023	.375-16 Stainless Steel Hex Nut	4
47	25058	Q-Long Foam Seal	1
48	25683	Foam Seal	1

Description  
Panel 3 B.O.M.

File Name  
Series 3600-T 2L1R and  
1L2R Assembly

REV  
**A**

Released 11/4/2022

SHEET 8 OF 8

**PROPRIETARY AND CONFIDENTIAL**

THE INFORMATION CONTAINED IN THIS DRAWING IS THE SOLE PROPERTY OF FLEETWOOD WINDOWS & DOORS.  
ANY REPRODUCTION IN PART OR AS A WHOLE WITHOUT THE WRITTEN PERMISSION OF FLEETWOOD WINDOWS & DOORS IS PROHIBITED.