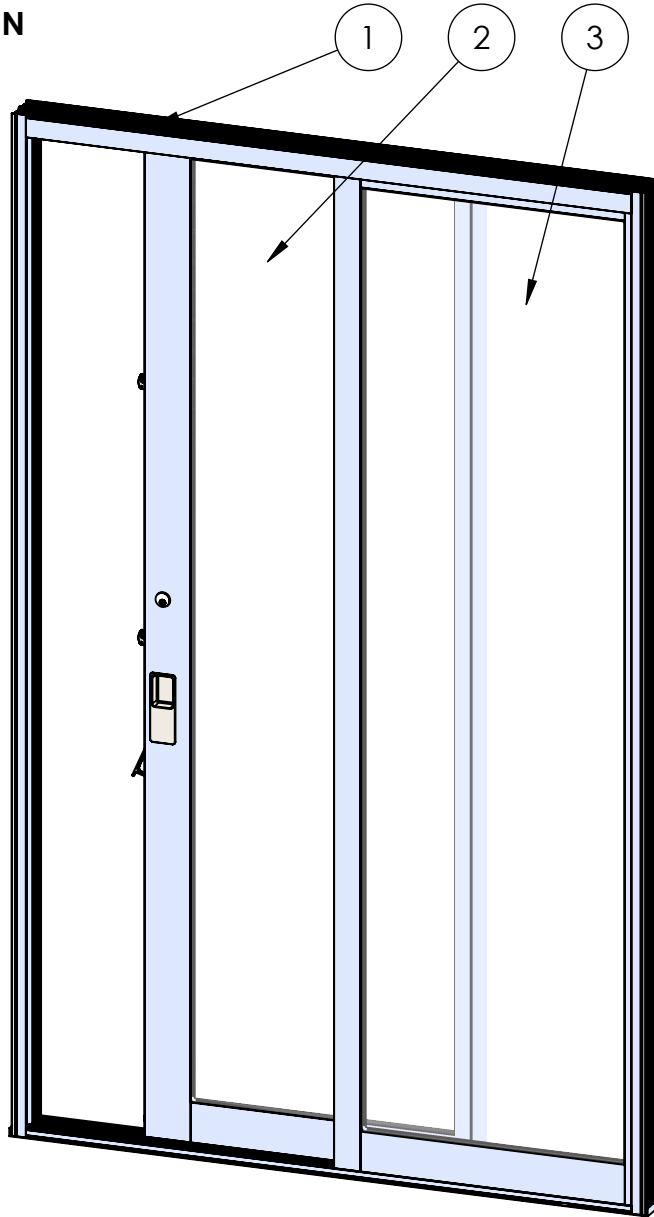


ASSEMBLY / PARTS LIST (B.O.M.)

SERIES: 3070-T
TYPE: XO CONFIGURATION



ITEM NO.	DESCRIPTION	PAGE #
1	XO Frame Assembly	2-3
2	X Panel Assembly	4-5
3	O Panel Assembly	6
4	Tables	7

- NOTES:**
- Secondary Latch used only when net frame height $\geq 96"$.
 - Panels are numbered from left to right as viewed from the exterior.

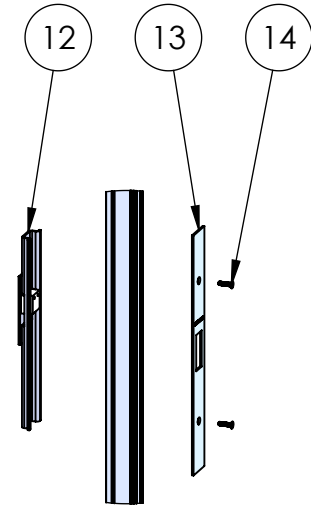
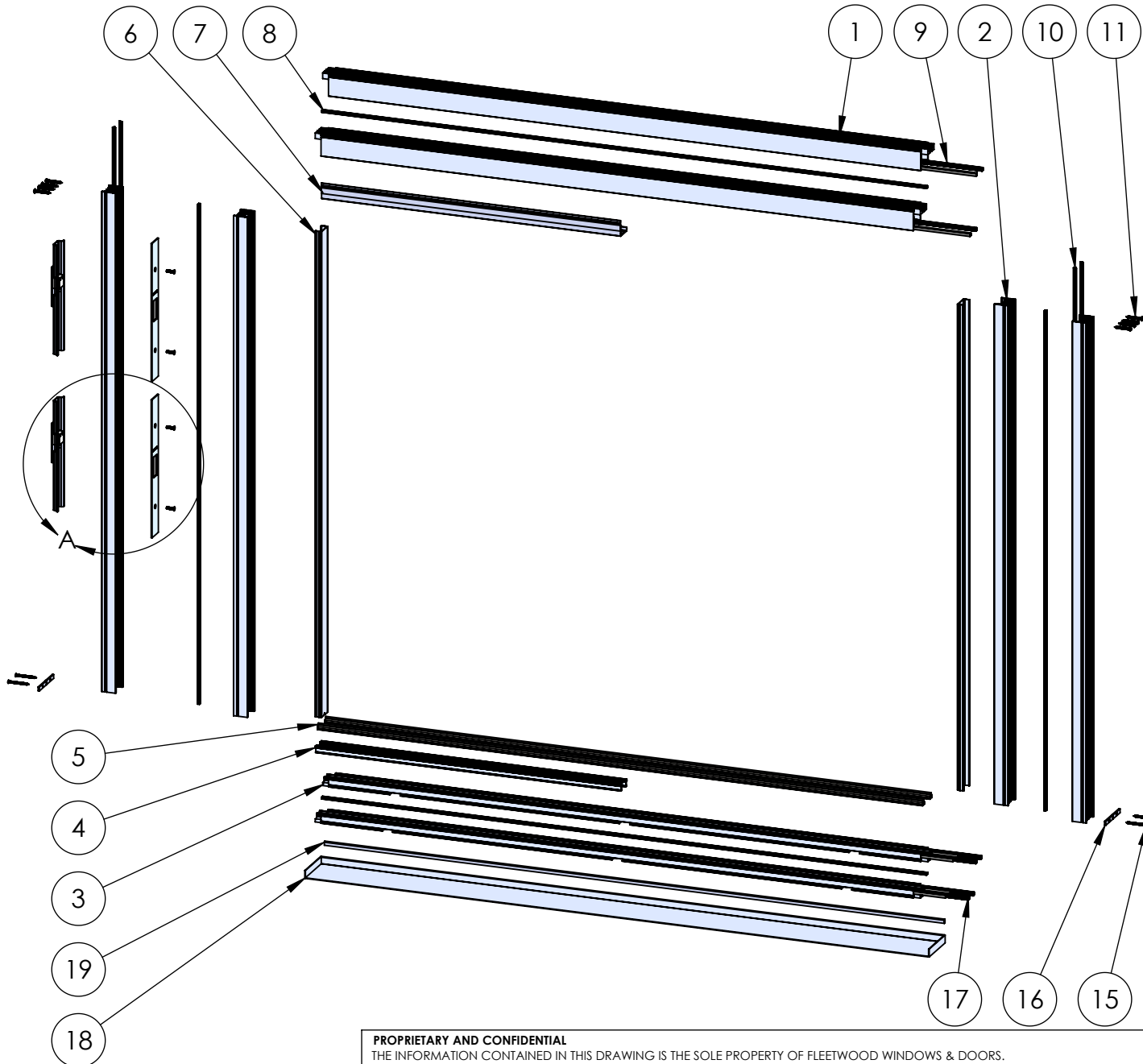
PROPRIETARY AND CONFIDENTIAL
THE INFORMATION CONTAINED IN THIS DRAWING IS THE SOLE PROPERTY OF FLEETWOOD WINDOWS & DOORS.
ANY REPRODUCTION IN PART OR AS A WHOLE WITHOUT THE WRITTEN PERMISSION OF FLEETWOOD WINDOWS & DOORS IS PROHIBITED.

Description Table of Contents	
File Name Series 3070-T XO No Screen Assembly	REV B
Released 3/4/2026	SHEET 1 OF 7

ASSEMBLY / PARTS LIST (B.O.M.)

NOTES:

1: Frame Assembly scaled down to show detail.



DETAIL A
SCALE: 1:10

PROPRIETARY AND CONFIDENTIAL
THE INFORMATION CONTAINED IN THIS DRAWING IS THE SOLE PROPERTY OF FLEETWOOD WINDOWS & DOORS.
ANY REPRODUCTION IN PART OR AS A WHOLE WITHOUT THE WRITTEN PERMISSION OF FLEETWOOD WINDOWS & DOORS IS PROHIBITED.

Description XO Frame Assembly	
File Name Series 3070-T XO No Screen Assembly	REV B
Released	3/4/2026
SHEET 2 OF 7	

ASSEMBLY / PARTS LIST (B.O.M.)

EXTRUSIONS

ITEM NO.	PART NUMBER	DESCRIPTION	QTY.
1	3701	Head 1-Track Assembly	2
2	3711	Jamb 1-Track Assembly	4
3	3749	Thermal Sill 1-Track Assembly	2
4	3747	Sill Filler	2
5	FW1020	Stainless Steel Track	2
6	3710	Jamb Filler	2
7	3014	Head Filler/Closer	1

HARDWARE

ITEM NO.	PART NUMBER	DESCRIPTION	QTY.
8	23025	PVC MS Track Joiner	4
9	19118	Small Fin Seal Mohair	4
10	25757	Q-Lon Foam Seal	4
11	20353	#10 PHP-A, 1.5 in, SS, Clear	8
12	24790	Backup Plate Assembly	2
13	24067	Strike Plate	2
14	25073	#10-32 FHP-B, .75, SS, Clear	4
15	20258	#8 FHP-A, 2 in, SS, Clear	4
16	25186	Rectangular Washer	4
17	27538	Fin Seal Mohair 270270	8
18	3720	Sillpan	1
19	23220	Sillpan Hem Cover	1

Description
XO Frame Assembly B.O.M.

File Name
Series 3070-T XO No
Screen Assembly

REV
B

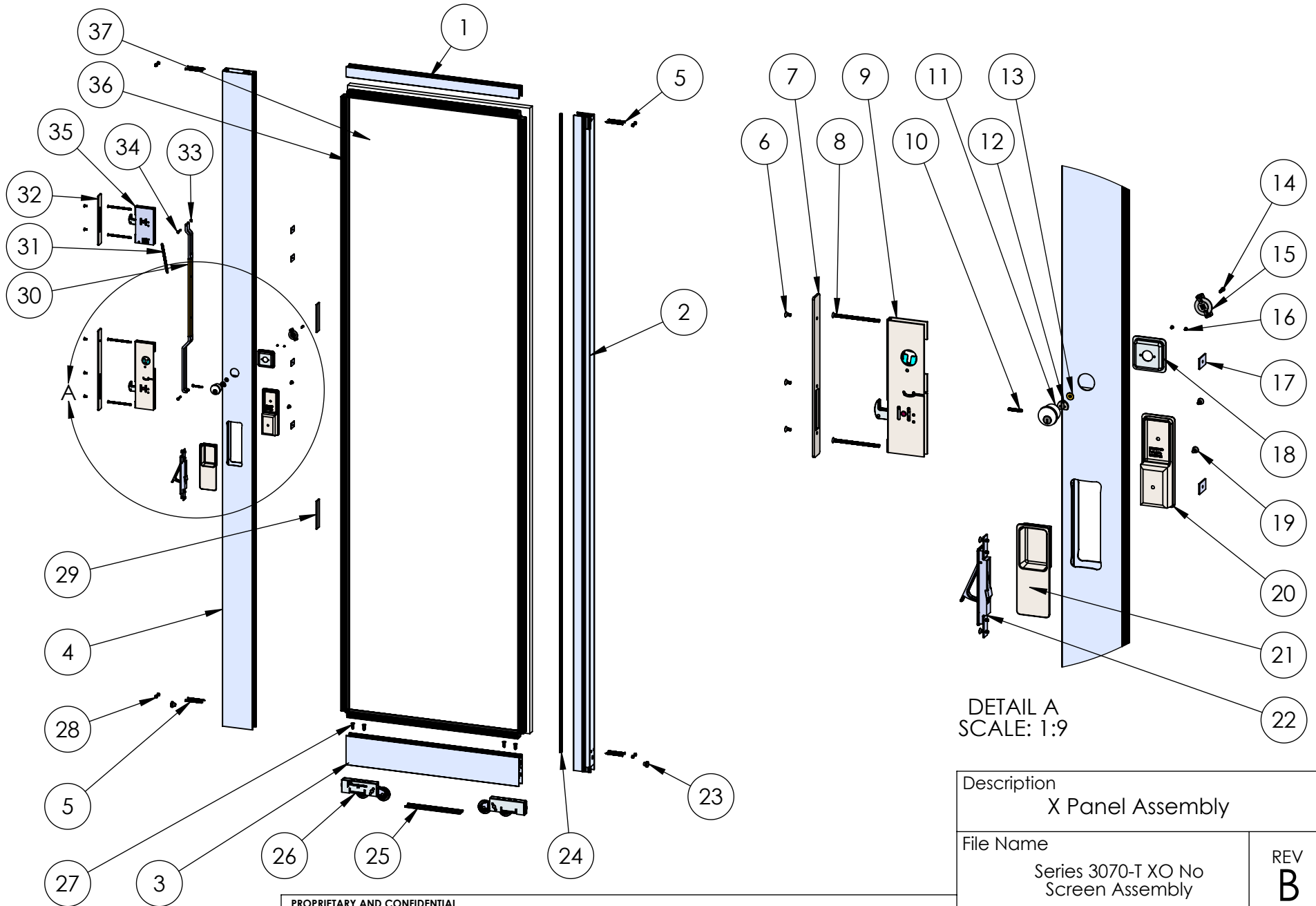
PROPRIETARY AND CONFIDENTIAL

THE INFORMATION CONTAINED IN THIS DRAWING IS THE SOLE PROPERTY OF FLEETWOOD WINDOWS & DOORS.
ANY REPRODUCTION IN PART OR AS A WHOLE WITHOUT THE WRITTEN PERMISSION OF FLEETWOOD WINDOWS & DOORS IS PROHIBITED.

Released 3/4/2026

SHEET 3 OF 7

ASSEMBLY / PARTS LIST (B.O.M.)



DETAIL A
SCALE: 1:9

PROPRIETARY AND CONFIDENTIAL
THE INFORMATION CONTAINED IN THIS DRAWING IS THE SOLE PROPERTY OF FLEETWOOD WINDOWS & DOORS.
ANY REPRODUCTION IN PART OR AS A WHOLE WITHOUT THE WRITTEN PERMISSION OF FLEETWOOD WINDOWS & DOORS IS PROHIBITED.

Description X Panel Assembly	
File Name Series 3070-T XO No Screen Assembly	REV B
Released 3/4/2026	SHEET 4 OF 7

ASSEMBLY / PARTS LIST (B.O.M.)

EXTRUSIONS			
ITEM NO.	PART NUMBER	DESCRIPTION	QTY.
1	3075	Thermal Top Rail DG	1
2	3727	Thermal Interlock Sliding	1
3	3789	Thermal Bottom Rail	1
4	3793	Thermal Lock Stile (Shear Free Strut)	1
HARDWARE			
ITEM NO.	PART NUMBER	DESCRIPTION	QTY.
5	27635	#8 FHP-A, 2.5", SS, Clear	8
6	24076	#8-32 FHS, 3/8" Hex Socket Flat, SS, Clear	5
7	26685	Archetype Latch Faceplate	1
8	25560	#10-32 FHP-B Screw, 3.375 in.	4
9	24077	Archetype XO Primary Latch, RH Latch	1
10	24935	#8-32 x 1" Set Screw (Reg. Arch. Cyl.)	1
11	See Table A	Key Cylinder Set	1
12	24780	Cam - (for Archetype Key Cylinder)	1
13	25681	Brass Bushing - Key Cylinder	1
14	24072, 24094	#6-32, Hex Socket Head Cap, Self Locking, 1/2", SS (Clear, Black)	1
15	24079, 24766	Archetype Actuator (Black, SS)	1
16	24074	#4-40 FHP-UC, .188 in, SS, Clear	2
17	18671	Back Up Plate # 10-32 x 0.075 Thk.	4
18	24767, 24081	Archetype Actuator Pocket, XO (SS, BLK)	1
19	24087, 24093	#10-32 FH Socket Screw, 0.4375" (SS, BLK)	2
20	24089, 24091	Archetype Handle, Inside, with Gasket (SS, BLK)	1
21	24090, 24092	Archetype Handle, Outside, with Gasket (SS, BLK)	1

HARDWARE			
ITEM NO.	PART NUMBER	DESCRIPTION	QTY.
22	26136, 27680	Edge Pull Thermal (SS, BLK)	1
23	20635	Small Round Panel Plug (All Doors)	2
24	19117	Large Fin Seal Mohair	1
25	22938	PVC Rail Spreader, BL798	1
26	20514	A2 Roller Assembly	2
27	20305	1/4-20 FHP - B, 3/4 in, SS Clear	4
28	25907	Round Plug - Plastic - 5/16"	8
29	18621	Setting Block (1/8 in x 4 in)	2
30	26373	Secondary Latch Linkage	1
31	24127	Spring Compensation - Archetype Secondary Latch	1
32	26686	Archetype Secondary Latch Faceplate, (Thermal)	1
33	24129	E-Style Retaining Ring	2
34	24128	Archetype Pin, Clevis Grooved	2
35	24082	Archetype Secondary Latch	1
36	22909	1 Inch Glazing Vinyl with Corner Cuts	1
37	-	Glass	1

Description
X Panel Assembly B.O.M.

File Name
Series 3070-T XO No
Screen Assembly

REV
B

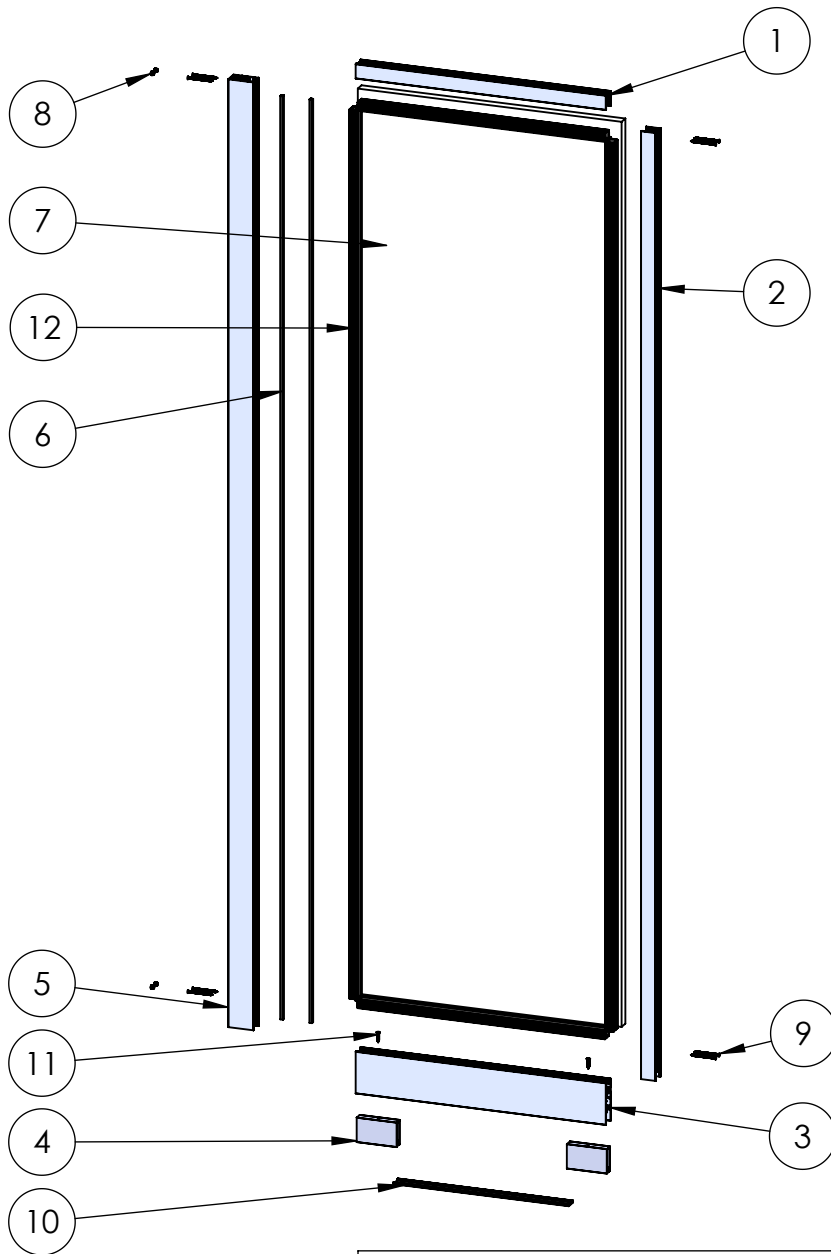
PROPRIETARY AND CONFIDENTIAL

THE INFORMATION CONTAINED IN THIS DRAWING IS THE SOLE PROPERTY OF FLEETWOOD WINDOWS & DOORS.
ANY REPRODUCTION IN PART OR AS A WHOLE WITHOUT THE WRITTEN PERMISSION OF FLEETWOOD WINDOWS & DOORS IS PROHIBITED.

Released 3/4/2026

SHEET 5 OF 7

ASSEMBLY / PARTS LIST (B.O.M.)



EXTRUSIONS

ITEM NO.	PART NUMBER	DESCRIPTION	QTY.
1	3075	Thermal Top Rail DG	1
2	3073	Fixed Stile DG	1
3	3789	Thermal Bottom Rail	1
4	3761	Fixed Panel Block	2
5	3728	Thermal Interlocker Fixed	1

HARDWARE

ITEM NO.	PART NUMBER	DESCRIPTION	QTY.
6	19117	Large Fin Seal Mohair	2
7	-	Glass	1
8	25907	Round Plug - Plastic - 5/16"	4
9	27635	#8 FHP-A, 2.5", SS, Clear	8
10	22938	PVC Rail Spreader, BL798	1
11	20293	#10 FHP-A, 1", SS, Clear	2
12	25032	1 Inch Glazing Vinyl (Tremco)	1

Description O Panel Assembly	
File Name Series 3070-T XO No Screen Assembly	REV B
Released 3/4/2026	SHEET 6 OF 7

PROPRIETARY AND CONFIDENTIAL
THE INFORMATION CONTAINED IN THIS DRAWING IS THE SOLE PROPERTY OF FLEETWOOD WINDOWS & DOORS.
ANY REPRODUCTION IN PART OR AS A WHOLE WITHOUT THE WRITTEN PERMISSION OF FLEETWOOD WINDOWS & DOORS IS PROHIBITED.

ASSEMBLY / PARTS LIST (B.O.M.)

TABLE A: Key Cylinder Options

Keyed	Color	ID
Alike	Stainless	25356
	Black	24784
Different	Stainless	24782
	Black	24783

Description	
Tables	
File Name	REV
Series 3070-T XO No Screen Assembly	B
Released	SHEET 7 OF 7
3/4/2026	