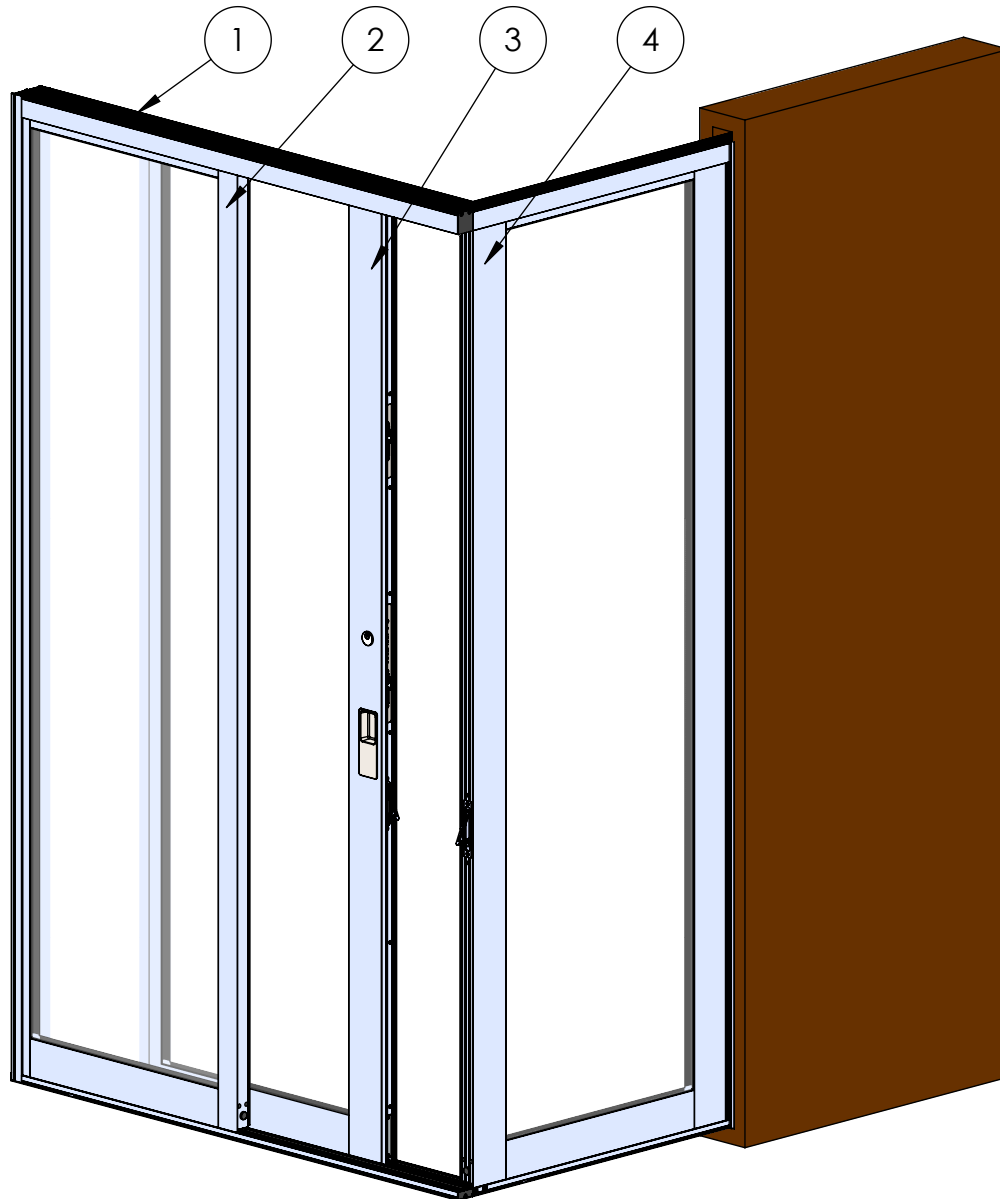


# ASSEMBLY / PARTS LIST (B.O.M.)

**SERIES: 3070-T**  
**TYPE: OXVXP CONFIGURATION**



| ITEM NO. | DESCRIPTION        | PAGE # |
|----------|--------------------|--------|
| 1        | Frame Assembly     | 2-3    |
| 2        | O Panel Assembly   | 4      |
| 3        | X Panel 1 Assembly | 5-6    |
| 4        | X Panel 2 Assembly | 7-8    |
| 5        | Tables             | 9      |

**NOTES:**

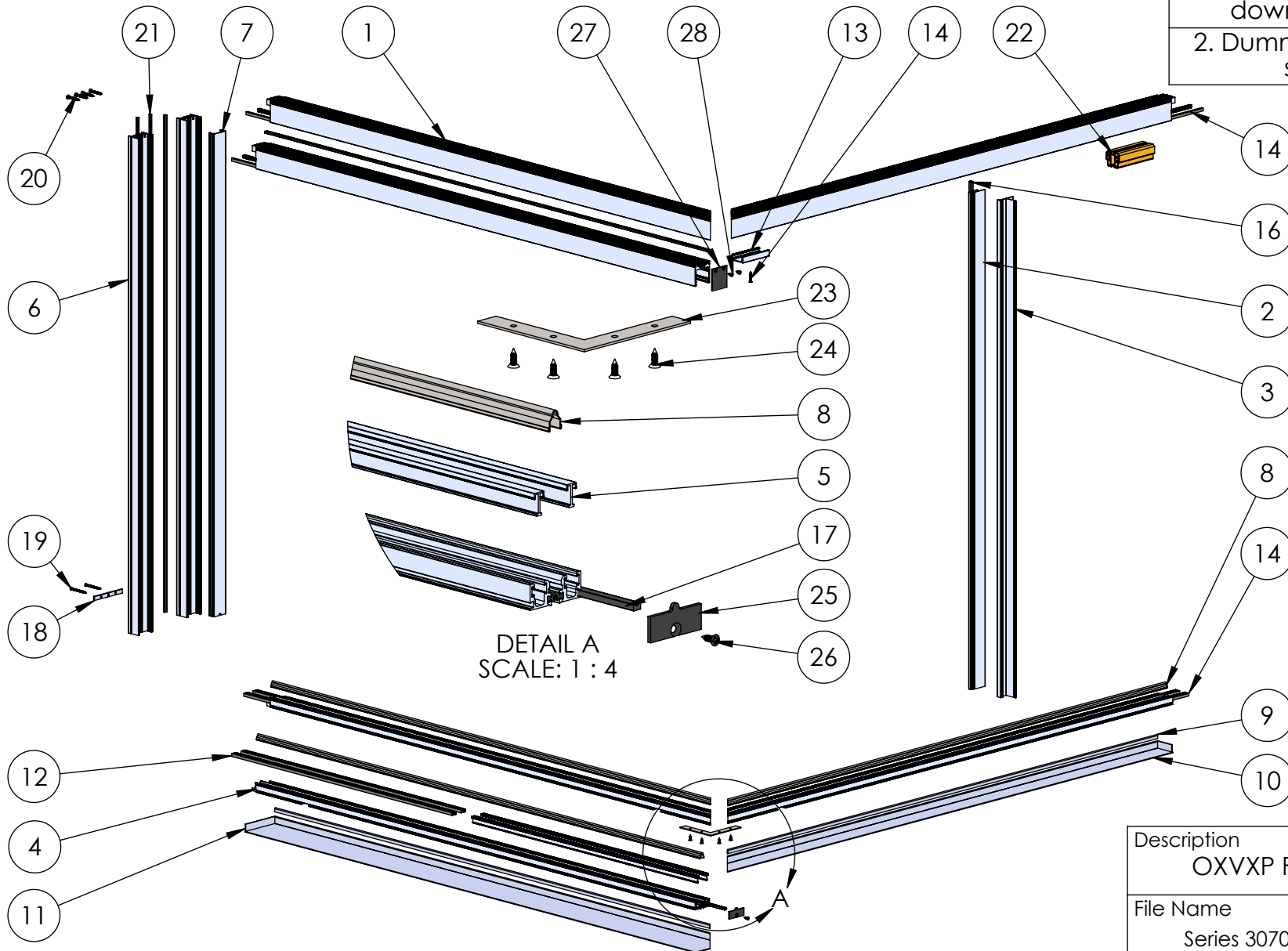
1. Active left configuration shown.
2. Dummy wall shown to demonstrate pocket.
3. Secondary latch used only when net frame height  $\geq 96"$ .
4. Interior stack shown.

|  |                 |
|--|-----------------|
| Description<br>Table of Contents                       |                 |
| File Name<br>Series 3070-T OXVXP No<br>Screen Assembly | REV<br><b>B</b> |
| Released 3/11/2026                                     | SHEET 1 OF 9    |

# ASSEMBLY / PARTS LIST (B.O.M.)

**NOTES:**

1. Frame Assembly size scaled down to show detail.
2. Dummy wall removed to show detail.



DETAIL A  
SCALE: 1 : 4

|  |                 |
|--|-----------------|
| Description<br>OXVXP Frame Assembly                    |                 |
| File Name<br>Series 3070-T OXVXP No<br>Screen Assembly | REV<br><b>B</b> |
| Released   | 3/11/2026       |
| SHEET 2 OF 9   |                 |

**PROPRIETARY AND CONFIDENTIAL**  
THE INFORMATION CONTAINED IN THIS DRAWING IS THE SOLE PROPERTY OF FLEETWOOD WINDOWS & DOORS.  
ANY REPRODUCTION IN PART OR AS A WHOLE WITHOUT THE WRITTEN PERMISSION OF FLEETWOOD WINDOWS & DOORS IS PROHIBITED.

# ASSEMBLY / PARTS LIST (B.O.M.)

## EXTRUSIONS

| ITEM NO. | PART NUMBER | DESCRIPTION                   | QTY. |
|----------|-------------|-------------------------------|------|
| 1        | 3701        | Head 1-Track Assembly         | 3    |
| 2        | 3748        | Post Interlocker Snap-In      | 1    |
| 3        | 3756        | Post Interlock Nail-Fin       | 1    |
| 4        | 3749        | Thermal Sill 1-Track Assembly | 3    |
| 5        | 3747        | Sill Filler                   | 2    |
| 6        | 3711        | Jamb 1-Track Assembly         | 2    |
| 7        | 3710        | Jamb Filler                   | 1    |
| 8        | FW1020      | Stainless Steel Track         | 3    |

## HARDWARE

| ITEM NO. | PART NUMBER | DESCRIPTION                      | QTY. |
|----------|-------------|----------------------------------|------|
| 9        | 23220       | Sillpan Hem Cover                | 2    |
| 10       | 3720-1      | N3-Sill Pan - 1 Track            | 1    |
| 11       | 3720-2      | N3-Sill Pan - 2 Track            | 1    |
| 12       | 27538       | Fin Seal Mohair 270270           | 8    |
| 13       | 24098       | Head Anti Lift                   | 1    |
| 14       | 20247       | #8, FHP-A Screw, 1 in, SS, Clear | 1    |
| 14       | 19118       | Small Fin Seal Mohair            | 10   |
| 16       | 19117       | Large Fin Seal Mohair            | 1    |
| 17       | 23025       | PVC MS Track Joiner              | 3    |
| 18       | 25186       | Rectangular Washer               | 2    |
| 19       | 20258       | #8 FHP-A, 2 in, SS, Clear        | 2    |
| 20       | 20353       | # 10 PHP-A, 1.5 in, SS, Clear    | 4    |
| 21       | 25757       | Q-Lon Foam Seal                  | 2    |
| 22       | 24101       | Honeycomb Head Bumper            | 1    |
| 23       | 25037       | Corner Door Sill Brace           | 1    |

## HARDWARE

| ITEM NO. | PART NUMBER | DESCRIPTION                       | QTY. |
|----------|-------------|-----------------------------------|------|
| 24       | 20240       | #8 FHP - A - UC, .5 in, SS, Clear | 4    |
| 25       | 26912       | Sill - Track Cap                  | 1    |
| 26       | 20241       | #8 FHP-UC Screw, 0.5 in. (BL)     | 1    |
| 27       | 26153       | Thermal Head Cap                  | 1    |
| 28       | 20276       | #10 FHP-A-UC Screw, 0.5 in. (BL)  | 2    |

Description  
OXVXP Frame Assembly B.O.M.

File Name  
Series 3070-T OXVXP No  
Screen Assembly

REV  
**B**

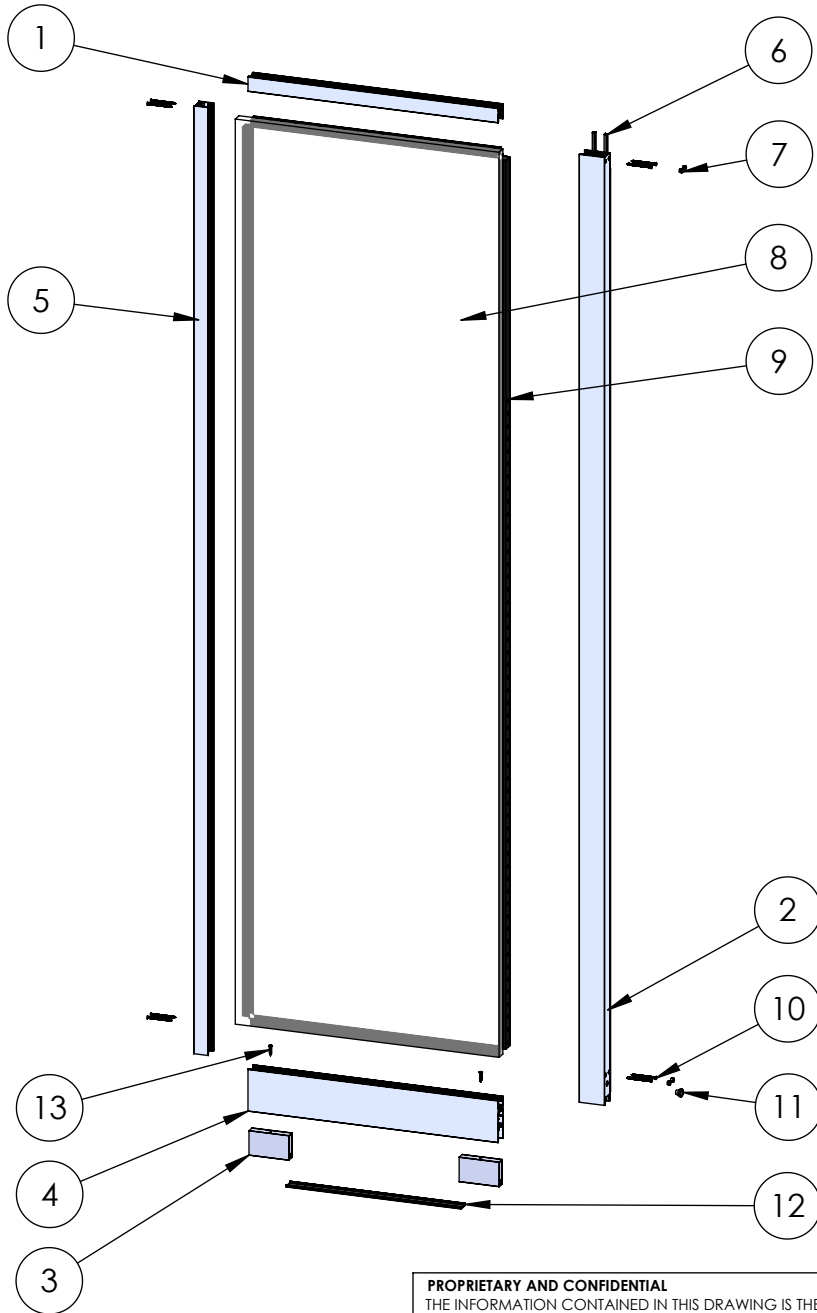
Released 3/11/2026

SHEET 3 OF 9

**PROPRIETARY AND CONFIDENTIAL**

THE INFORMATION CONTAINED IN THIS DRAWING IS THE SOLE PROPERTY OF FLEETWOOD WINDOWS & DOORS.  
ANY REPRODUCTION IN PART OR AS A WHOLE WITHOUT THE WRITTEN PERMISSION OF FLEETWOOD WINDOWS & DOORS IS PROHIBITED.

# ASSEMBLY / PARTS LIST (B.O.M.)



## EXTRUSIONS

| ITEM NO. | PART NUMBER | DESCRIPTION               | QTY. |
|----------|-------------|---------------------------|------|
| 1        | 3075        | Thermal Top Rail DG       | 1    |
| 2        | 3728        | Thermal Interlocker Fixed | 1    |
| 3        | 3761        | Fixed Panel Block         | 2    |
| 4        | 3789        | Thermal Bottom Rail       | 1    |
| 5        | 3073        | Fixed Stile DG            | 1    |

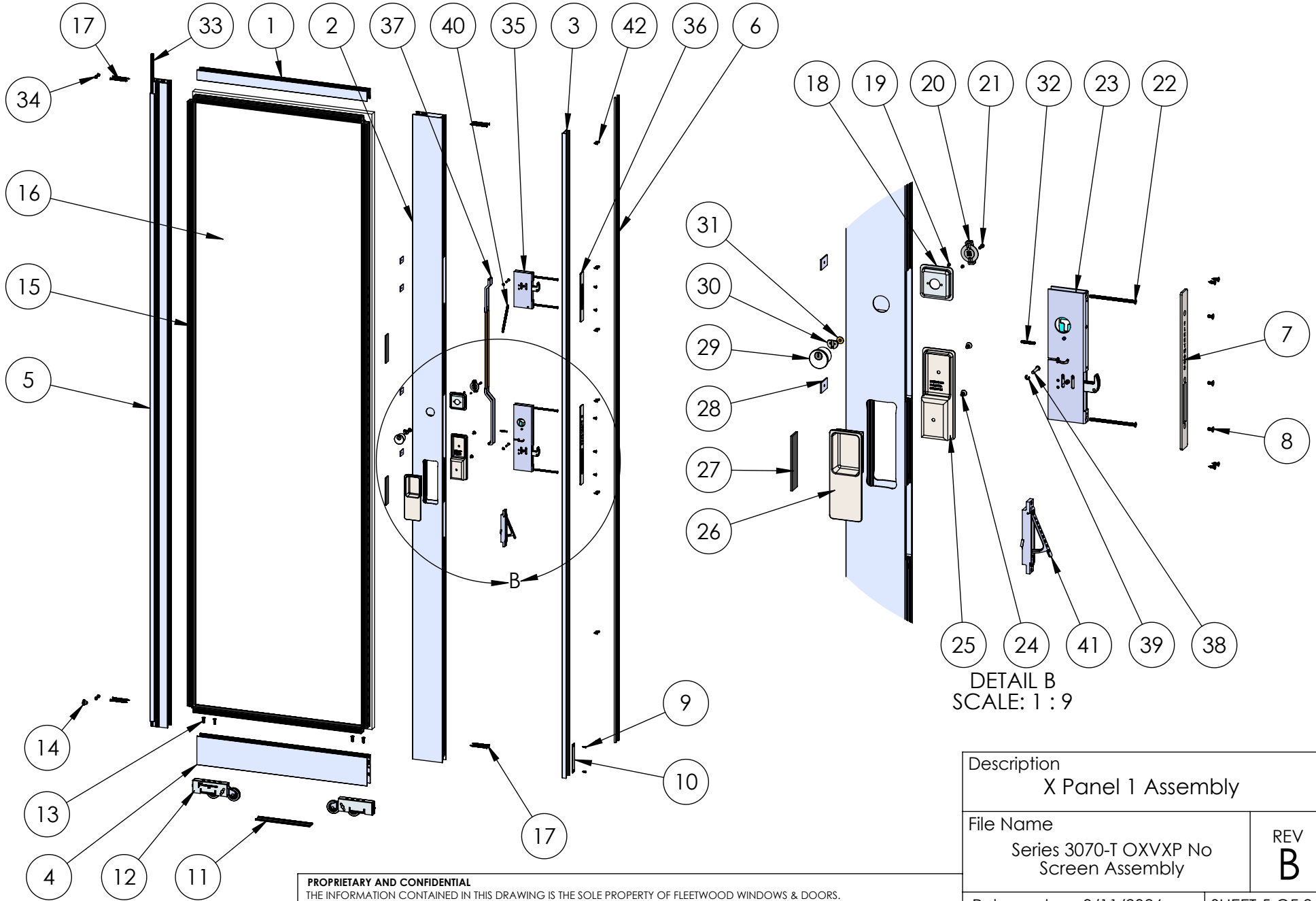
## HARDWARE

| ITEM NO. | PART NUMBER | DESCRIPTION                        | QTY. |
|----------|-------------|------------------------------------|------|
| 6        | 19117       | Large Fin Seal Mohair              | 2    |
| 7        | 25907       | Round Plug - Plastic - 5/16"       | 4    |
| 8        | -           | Glass                              | 1    |
| 9        | 25032       | 1 Inch Glazing Vinyl (Tremco)      | 1    |
| 10       | 27635       | #8 FHP-A, 2.5", SS, Clear          | 8    |
| 11       | 20635       | Small Round Panel Plug (All Doors) | 1    |
| 12       | 22938       | PVC Rail Spreader, BL798           | 1    |
| 13       | 20293       | #10 FHP-A, 1", SS, Clear           | 2    |

|  |                 |
|--|-----------------|
| Description<br>O Panel Assembly                        |                 |
| File Name<br>Series 3070-T OXVXP No<br>Screen Assembly | REV<br><b>B</b> |
| Released 3/11/2026                                     | SHEET 4 OF 9    |

**PROPRIETARY AND CONFIDENTIAL**  
THE INFORMATION CONTAINED IN THIS DRAWING IS THE SOLE PROPERTY OF FLEETWOOD WINDOWS & DOORS.  
ANY REPRODUCTION IN PART OR AS A WHOLE WITHOUT THE WRITTEN PERMISSION OF FLEETWOOD WINDOWS & DOORS IS PROHIBITED.

# ASSEMBLY / PARTS LIST (B.O.M.)



DETAIL B  
SCALE: 1 : 9

**PROPRIETARY AND CONFIDENTIAL**  
THE INFORMATION CONTAINED IN THIS DRAWING IS THE SOLE PROPERTY OF FLEETWOOD WINDOWS & DOORS.  
ANY REPRODUCTION IN PART OR AS A WHOLE WITHOUT THE WRITTEN PERMISSION OF FLEETWOOD WINDOWS & DOORS IS PROHIBITED.

|  |                 |
|--|-----------------|
| Description<br>X Panel 1 Assembly                      |                 |
| File Name<br>Series 3070-T OXVXP No<br>Screen Assembly | REV<br><b>B</b> |
| Released 3/11/2026                                     | SHEET 5 OF 9    |

# ASSEMBLY / PARTS LIST (B.O.M.)

| EXTRUSIONS |              |   |      |
|------------|--------------|---|------|
| ITEM NO.   | PART NUMBER  | DESCRIPTION   | QTY. |
| 1          | 3075         | Thermal Top Rail DG   | 1    |
| 2          | 3776         | Thermal Lock Stile Archetype                                      | 1    |
| 3          | 3040         | Female Yoke   | 1    |
| 4          | 3789         | Thermal Bottom Rail   | 1    |
| 5          | 3727         | Thermal Interlocker Sliding                                       | 1    |
| HARDWARE   |              |   |      |
| ITEM NO.   | PART NUMBER  | DESCRIPTION   | QTY. |
| 6          | 19118        | Small Fins Seal Mohair  | 2    |
| 7          | 26685        | Archetype Latch Faceplate   | 1    |
| 8          | 24076, 25325 | #8-32 FHS, 3/8" Hex Socket Flat (SS, Black)                       | 5    |
| 9          | 20887        | #6 FHP-A-UC Screw, 0.5 in. (SS)                                   | 2    |
| 10         | 25035        | Meeting Stile Bumper Cover Plate                                  | 1    |
| 11         | 22938        | PVC Rail Spreader, BL798  | 1    |
| 12         | 20514        | A2 Roller Assembly  | 2    |
| 13         | 20305        | 1/4-20 FHP - B, 3/4 in, SS Clear                                  | 4    |
| 14         | 20635        | Small Round Panel Plug (All Doors)                                | 1    |
| 15         | 22909        | 1 Inch Glazing Vinyl with Corner Cuts                             | 1    |
| 16         | -            | Glass   | 1    |
| 17         | 27635        | #8 FHP-A, 2.5", SS, Clear   | 8    |
| 18         | 24767, 24081 | Archetype Actuator Pocket, XO (SS, BLK)                           | 1    |
| 19         | 24074        | #4-40 FHP-UC, .188 in, SS, Clear                                  | 2    |
| 20         | 24079, 24766 | Archetype Actuator (Black, SS)                                    | 1    |
| 21         | 24072, 24094 | #6-32, Hex Socket Head Cap, Self Locking, 1/2", SS (Clear, Black) | 1    |
| 22         | 25560        | #10-32 FHP-B Screw, 3.375 in.                                     | 4    |
| 23         | 24070        | OX Primary Latch  | 1    |
| 24         | 24087, 24093 | #10-32 FH Socket Screw, 0.4375" (SS, BLK)                         | 2    |

| HARDWARE |              |  |        |
|----------|--------------|--|--------|
| ITEM NO. | PART NUMBER  | DESCRIPTION                                    | QTY.   |
| 25       | 24089, 24091 | Archetype Handle, Inside, Gasket (SS, BLK)     | 1      |
| 26       | 24090, 24092 | Archetype Handle, Outside, Gasket (SS, BLK)    | 1      |
| 27       | 18621        | Setting Block (1/8 in x 4 in)                  | 2      |
| 28       | 18671        | Back Up Plate # 10-32 x 0.075 Thk.             | 4      |
| 29       | See Table A  | Key Cylinder Set                               | 1      |
| 30       | 24780        | Cam - (for Archetype Key Cylinder)             | 1      |
| 31       | 25681        | Bushing-Key Cyl. - Narrow Arch.                | 1      |
| 32       | 24935        | #8-32 x 1" Set Screw (Reg. Arch. Cyl.)         | 1      |
| 33       | 19117        | Large Fin Seal Mohair                          | 1      |
| 34       | 25907        | Round Plug - Plastic - 5/16"                   | 4      |
| 35       | 24082        | Archetype Secondary Latch                      | 1      |
| 36       | 26686        | Archetype Secondary Latch Faceplate, (Thermal) | 1      |
| 37       | 26373        | Secondary Latch Linkage                        | 1      |
| 38       | 24128        | Archetype Pin, Clevis Grooved                  | 2      |
| 39       | 24129        | E-Style Retaining Ring                         | 2      |
| 40       | 26171        | Spring Compensation                            | 1      |
| 41       | 26135, 27679 | Edge Pull (SS, BLK)                            | 1      |
| 42       | 20240        | #8 FHP - A - UC, .5 in, SS, Clear              | Varies |

Description  
X Panel 1 Assembly B.O.M.

File Name  
Series 3070-T OXVXP No  
Screen Assembly

REV  
**B**

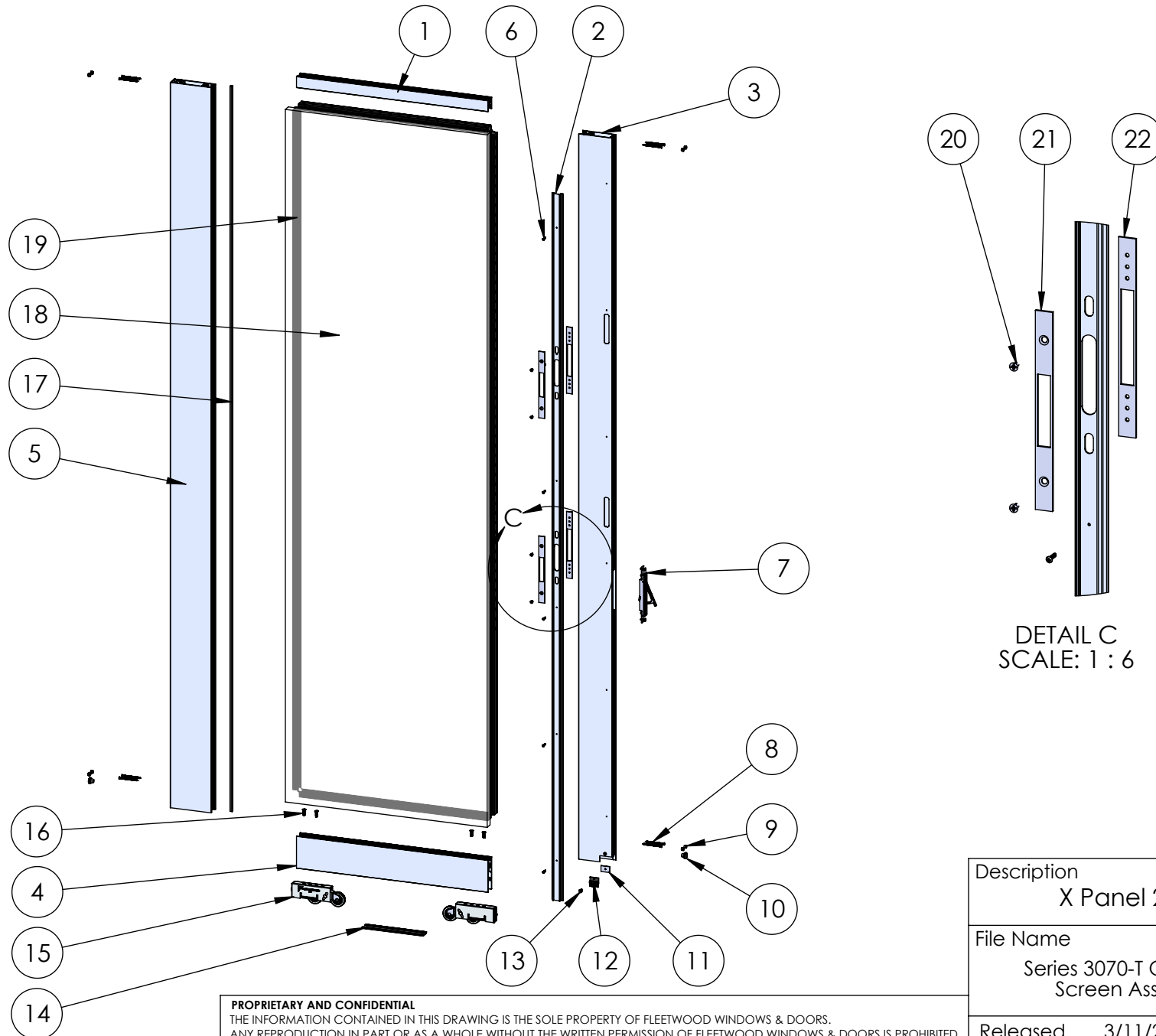
Released 3/11/2026

SHEET 6 OF 9

**PROPRIETARY AND CONFIDENTIAL**

THE INFORMATION CONTAINED IN THIS DRAWING IS THE SOLE PROPERTY OF FLEETWOOD WINDOWS & DOORS.  
ANY REPRODUCTION IN PART OR AS A WHOLE WITHOUT THE WRITTEN PERMISSION OF FLEETWOOD WINDOWS & DOORS IS PROHIBITED.

# ASSEMBLY / PARTS LIST (B.O.M.)



**PROPRIETARY AND CONFIDENTIAL**  
 THE INFORMATION CONTAINED IN THIS DRAWING IS THE SOLE PROPERTY OF FLEETWOOD WINDOWS & DOORS.  
 ANY REPRODUCTION IN PART OR AS A WHOLE WITHOUT THE WRITTEN PERMISSION OF FLEETWOOD WINDOWS & DOORS IS PROHIBITED.

|  |                 |
|--|-----------------|
| Description<br>X Panel 2 Assembly                      |                 |
| File Name<br>Series 3070-T OXVXP No<br>Screen Assembly | REV<br><b>B</b> |
| Released 3/11/2026                                     | SHEET 7 OF 9    |

# ASSEMBLY / PARTS LIST (B.O.M.)

## EXTRUSIONS

| ITEM NO. | PART NUMBER | DESCRIPTION                            | QTY. |
|----------|-------------|--|------|
| 1        | 3075        | Thermal Top Rail DG                    | 1    |
| 2        | 3039        | Male Yoke                              | 1    |
| 3        | 3776        | Thermal Lock Stile Archetype           | 1    |
| 4        | 3789        | Thermal Bottom Rail                    | 1    |
| 5        | 3777        | 4 in Thermal Pocket Sightline Extender | 1    |

## HARDWARE

| ITEM NO. | PART NUMBER  | DESCRIPTION  | QTY.   |
|----------|--------------|--|--------|
| 6        | 20236        | #6 PHP - A, .75, SS, Clear                         | Varies |
| 7        | 26136, 27680 | Edge Pull Thermal (SS, BLK)                        | 1      |
| 8        | 27635        | #8 FHP-A, 2.5", SS, Clear                          | 8      |
| 9        | 25907        | Round Plug - Plastic - 5/16"                       | 8      |
| 10       | 20635        | Small Round Panel Plug (All Doors)                 | 2      |
| 11       | 18671        | Back Up Plate # 10-32 x 0.075 Thk.                 | 1      |
| 12       | 25779        | Sill Brush Air Barrier on Corner Door (Lead Stile) | 1      |
| 13       | 25487        | #10-32 FH Torx Screw, 0.5in.                       | 1      |
| 14       | 22938        | PVC Rail Spreader, BL798                           | 1      |
| 15       | 20514        | A2 Roller Assembly                                 | 2      |
| 16       | 20305        | 1/4-20 FHP - B, 3/4 in, SS Clear                   | 4      |

## HARDWARE

| ITEM NO. | PART NUMBER | DESCRIPTION                           | QTY. |
|----------|-------------|---------------------------------------|------|
| 17       | 19117       | Large Fin Seal Mohair                 | 1    |
| 18       | -           | Glass                                 | 1    |
| 19       | 22909       | 1 Inch Glazing Vinyl with Corner Cuts | 1    |
| 20       | 20266       | #10-32 FHP - UC, .375in               | 4    |
| 21       | 24980       | Strike Plate, Meeting Stile           | 2    |
| 22       | 24981       | Strike Backup Plate, Meeting Stile    | 2    |

Description  
X Panel 2 Assembly B.O.M.

File Name  
Series 3070-T OXVXP No  
Screen Assembly

REV  
**B**

**PROPRIETARY AND CONFIDENTIAL**

THE INFORMATION CONTAINED IN THIS DRAWING IS THE SOLE PROPERTY OF FLEETWOOD WINDOWS & DOORS.  
ANY REPRODUCTION IN PART OR AS A WHOLE WITHOUT THE WRITTEN PERMISSION OF FLEETWOOD WINDOWS & DOORS IS PROHIBITED.

Released 3/11/2026

SHEET 8 OF 9

# ASSEMBLY / PARTS LIST (B.O.M.)

| TABLE A: Key Cylinder Options |           |       |
|-------------------------------|-----------|-------|
| Keyed                         | Color     | ID    |
| Alike                         | Stainless | 25356 |
|                               | Black     | 24784 |
| Different                     | Stainless | 24782 |
|                               | Black     | 24783 |

|   |              |
|---|--------------|
| Description                               |              |
| Tables                                    |              |
| File Name                                 | REV          |
| Series 3070-T OXVXP No<br>Screen Assembly | <b>B</b>     |
| Released                                  | SHEET 9 OF 9 |
| 3/11/2026                                 |              |