

ASSEMBLY / PARTS LIST (B.O.M.)

Series: 3000

Type: Narrow OX Configuration with Screen



TABLE OF CONTENTS

ITEM NO.	DESCRIPTION	PAGE #
1	Frame Assembly	2-3
2	O Panel Assembly	4
3	X Panel Assembly	5-6
4	Screen Assembly	7

Description

Table of Contents

File Name

Series 3000 OX Assembly

REV

-

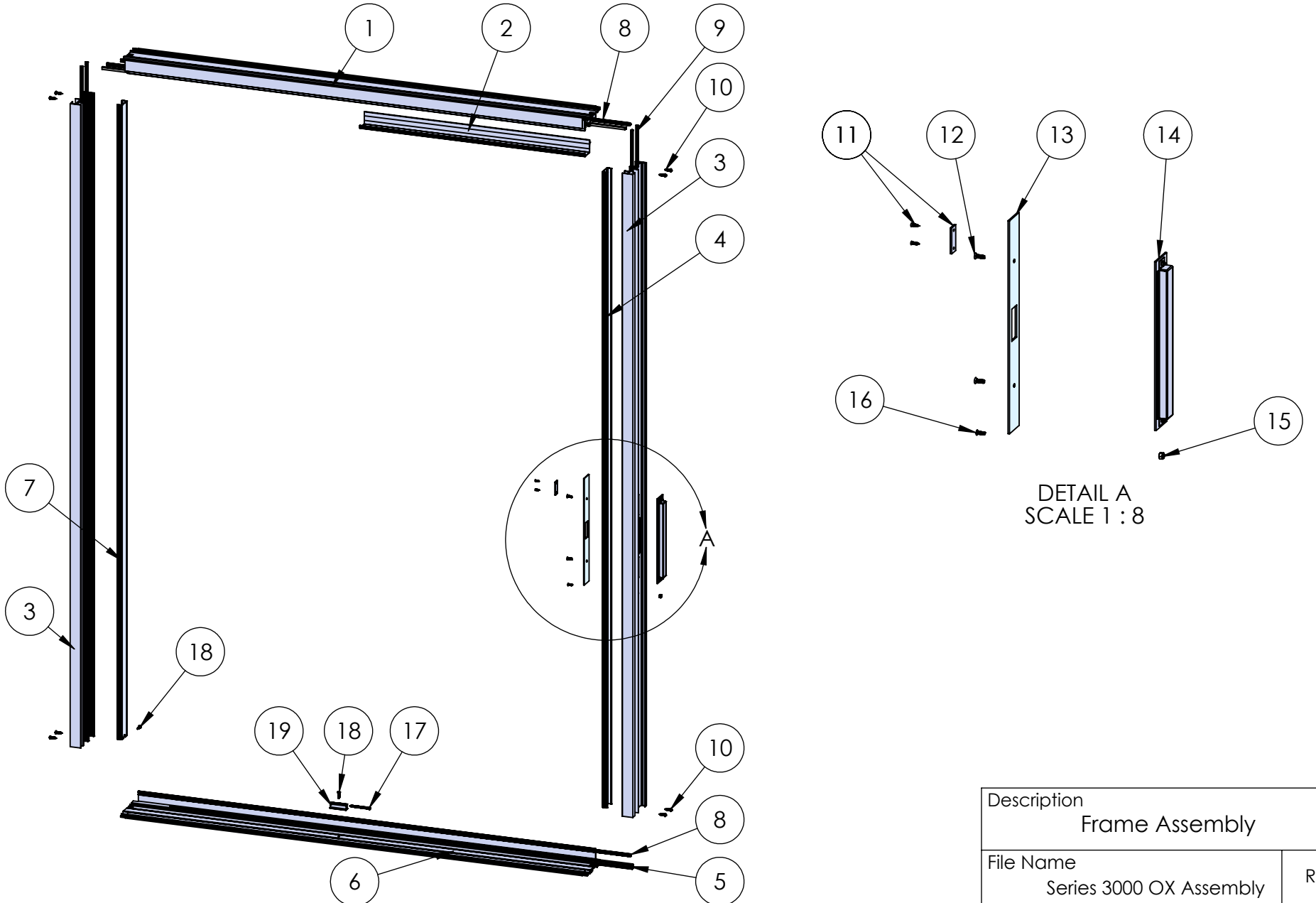
Released 1/7/2026

SHEET 1 OF 7

PROPRIETARY AND CONFIDENTIAL

THE INFORMATION CONTAINED IN THIS DRAWING IS THE SOLE PROPERTY OF FLEETWOOD WINDOWS & DOORS.
ANY REPRODUCTION IN PART OR AS A WHOLE WITHOUT THE WRITTEN PERMISSION OF FLEETWOOD WINDOWS & DOORS IS PROHIBITED.

ASSEMBLY / PARTS LIST (B.O.M.)



PROPRIETARY AND CONFIDENTIAL

THE INFORMATION CONTAINED IN THIS DRAWING IS THE SOLE PROPERTY OF FLEETWOOD WINDOWS & DOORS.
ANY REPRODUCTION IN PART OR AS A WHOLE WITHOUT THE WRITTEN PERMISSION OF FLEETWOOD WINDOWS & DOORS IS PROHIBITED.

Description Frame Assembly		
File Name Series 3000 OX Assembly		REV -
Released	1/7/2026	SHEET 2 OF 7

ASSEMBLY / PARTS LIST (B.O.M.)

EXTRUSIONS

ITEM NO.	PART NUMBER	DESCRIPTION	QTY.
1	3017, 3095	Head (Block, Nail-fin)	1
2	3011	Head Filler	1
3	3001, 3012	Jamb (Block, Nail-fin)	2
4	3016	Exterior Jamb Filler	1
5	FW1020	Stainless Steel Track	1
6	3002, 3003, 3038	Sill (1.25", 1.88", 3")	1
7	3102	Interior Jamb Filler	1

HARDWARE

ITEM NO.	PART NUMBER	DESCRIPTION	QTY.
8	19118	Small Fin Seal Mohair	5
9	25757	Q-Lon Foam Seal	4
10	20347	#10 PHP - A, 3/4", SS, Clear	8
11	27382	Magnetic Screen Strike Kit	1
12	20278	#10-32 FHP - B - UC, 1/2", SS, Clear	2
13	24067	Strike Plate	1
14	24068	Backup Plate (With Dust Cover)	1
15	25498	#8-32 Nylon-Insert Hex Locknut, SS	1
16	25497	#8-32 FHP, UC, 1/2", SS, Clear	1
17	20404	#10 OH - A, 2-1/2", Zinc, Gold	1
18	20312	#8 PHP - TEK, 3/4", SS, Clear	2
19	20502	Sill Block (M607)	1

Description

Frame B.O.M.

File Name

Series 3000 OX Assembly

REV

-

PROPRIETARY AND CONFIDENTIAL

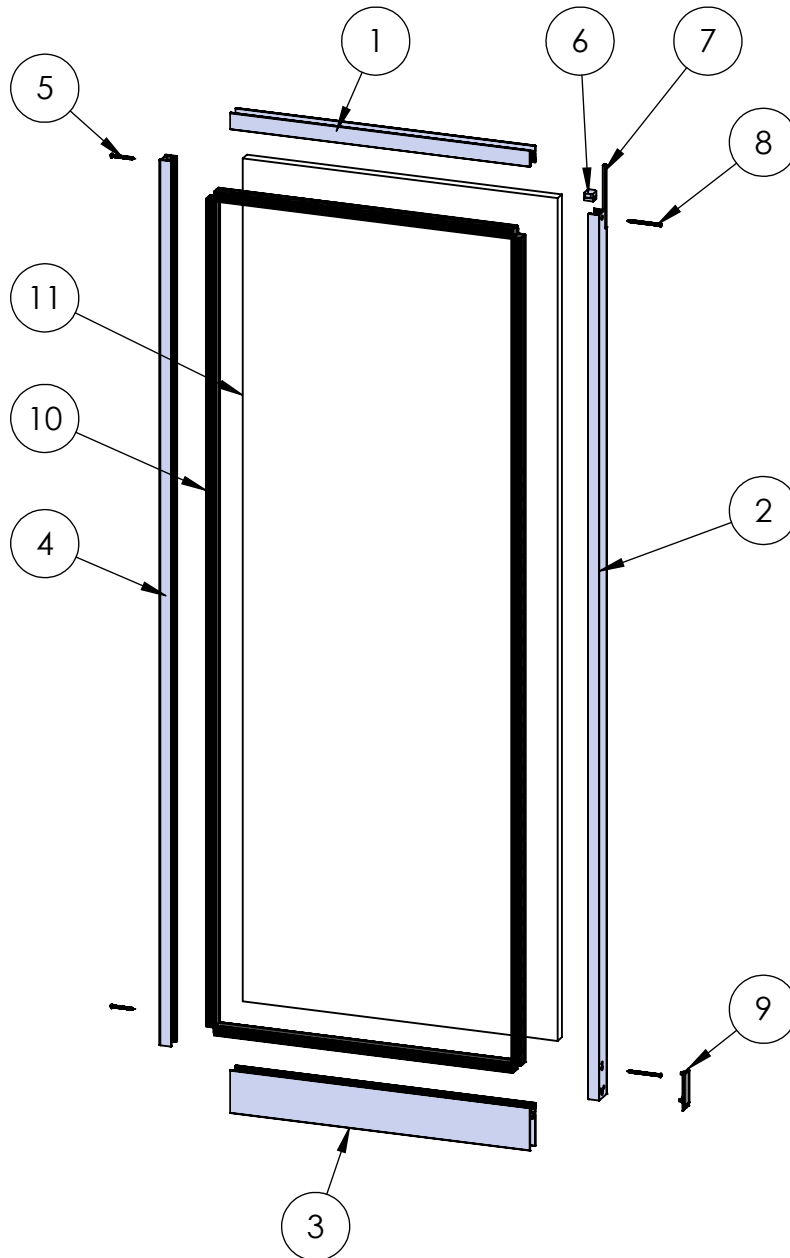
THE INFORMATION CONTAINED IN THIS DRAWING IS THE SOLE PROPERTY OF FLEETWOOD WINDOWS & DOORS.
ANY REPRODUCTION IN PART OR AS A WHOLE WITHOUT THE WRITTEN PERMISSION OF FLEETWOOD WINDOWS & DOORS IS PROHIBITED.

Released

1/7/2026

SHEET 3 OF 7

ASSEMBLY / PARTS LIST (B.O.M.)



EXTRUSIONS

ITEM NO.	PART NUMBER	DESCRIPTION	QTY.
1	3004	Top Rail	1
2	3737	1" Slim Interlocker	1
3	3010	Bottom Rail	1
4	3008	Fixed Stile	1

HARDWARE

ITEM NO.	PART NUMBER	DESCRIPTION	QTY.
5	20355	#10 PHP - A, 2", SS, Clear	2
6	27638	Narrow Interlocker Spacer	1
7	19122	Weatherstrip Mohair	1
8	26756, 27657	#10 FHP - A, 3", (SS, Blk)	2
9	27448	Slim Interlocker Bumper	1
10	22909	1" Glazing Vinyl	1
11	-	Glass	1

Optional HP Interlocker

Part Number	Description	QTY.
3738	1" Slim Interlocker - HP	1

Description

O Panel Assembly

File Name

Series 3000 OX Assembly

REV

-

Released

1/7/2026

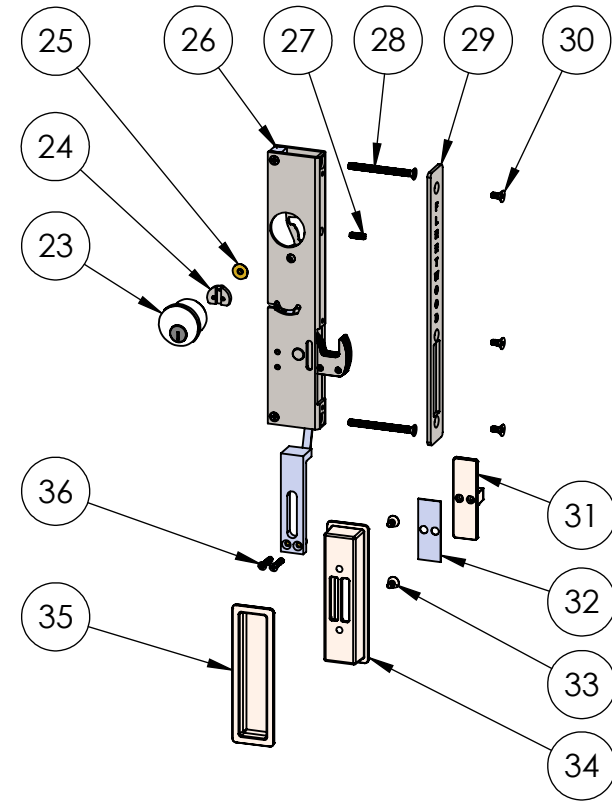
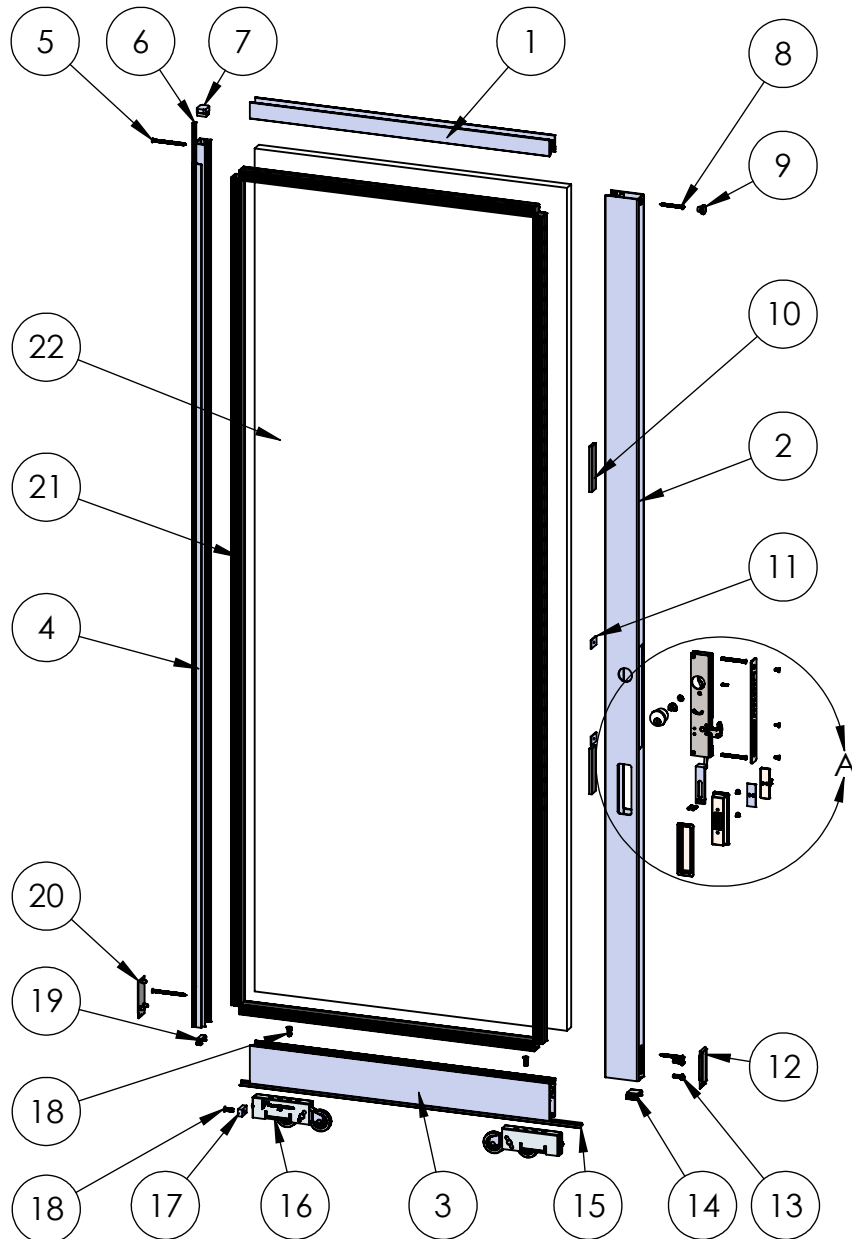
SHEET 4 OF 7

PROPRIETARY AND CONFIDENTIAL

THE INFORMATION CONTAINED IN THIS DRAWING IS THE SOLE PROPERTY OF FLEETWOOD WINDOWS & DOORS.

ANY REPRODUCTION IN PART OR AS A WHOLE WITHOUT THE WRITTEN PERMISSION OF FLEETWOOD WINDOWS & DOORS IS PROHIBITED.

ASSEMBLY / PARTS LIST (B.O.M.)



DETAIL A
SCALE 1 : 6

PROPRIETARY AND CONFIDENTIAL

THE INFORMATION CONTAINED IN THIS DRAWING IS THE SOLE PROPERTY OF FLEETWOOD WINDOWS & DOORS.
ANY REPRODUCTION IN PART OR AS A WHOLE WITHOUT THE WRITTEN PERMISSION OF FLEETWOOD WINDOWS & DOORS IS PROHIBITED.

Description X Panel Assembly		
File Name Series 3000 OX Assembly		REV -
Released	1/7/2026	SHEET 5 OF 7

ASSEMBLY / PARTS LIST (B.O.M.)

EXTRUSIONS			
ITEM NO.	PART NUMBER	DESCRIPTION	QTY.
1	3004	Top Rail	1
2	3005	Narrow Lock Stile	1
3	3009	Bottom Rail	1
4	3737	Slim Interlocker	1
HARDWARE			
ITEM NO.	PART NUMBER	DESCRIPTION	QTY.
5	26756, 27657	#10 FHP - A, 3", (SS, Blk)	2
6	19122	Weatherstrip Mohair	1
7	27638	Narrow Interlocker Spacer	1
8	20355	#10 PHP - A, 2", SS, Clear	2
9	20635	Small Round Door Bumper	1
10	18620	Setting Block 1/4" x 1" x 4"	2
11	18671	Back Up Plate	2
12	27567	Narrow Leadstile Bumper, Non-Thermal	1
13	20358	#1/4-20 PHP - B, 3/4", SS, Clear	2
14	19141	Bottom Vent Clip (Large)	1
15	19064	Sill Wipe, Bottom Wipe	1
16	20514	A2 Roller Precision Tandem	2
17	27594	Roller Interlocker Block	1
18	20305	#1/4-20 FHP - B, 3/4", SS	3
19	19142	Bottom Vent Clip (Small)	1
20	27448	Slim Interlocker Bumper	1

HARDWARE			
ITEM NO.	PART NUMBER	DESCRIPTION	QTY.
21	22909	1" Glazing Vinyl	1
22	-	Glass	1
23	18679, 18682, 18683, 18686	Key Cylinder [K/A (Black, S.S.), K/D (Black, S.S.)]	1
24	24780	Cam - (for the Archetype Key Cylinder)	1
25	25681	Brass Bushing - Key Cylinder	1
26	25320	Archetype Narrow Latch OX	1
27	25330	#8-32 x 1/2" Set Screw Narrow Arch. Cyl.	1
28	25928	#10-32 FHP Screw, 2.188"	2
29	25309	Archetype Narrow Latch Face Plate	1
30	24076	#8-32 FHS, 3/8" Hex Socket Flat SS	3
31	25317, 25318	Archetype Narrow Flush Actuator (BL, SS)	1
32	26245	Slider Friction Pad	1
33	24076, 25325	#8-32 FHS, 3/8" Hex Socket Flat (SS, Blk)	2
34	25314, 25315	Archetype Narrow Flush Int. Pocket (BL, SS)	1
35	25311, 25312	Archetype Narrow Flush Ext. Pocket (BL, SS)	1
36	25755	#6-32 FHP with Nylok, 3/4" (Archetype Narrow actuator screw)	2

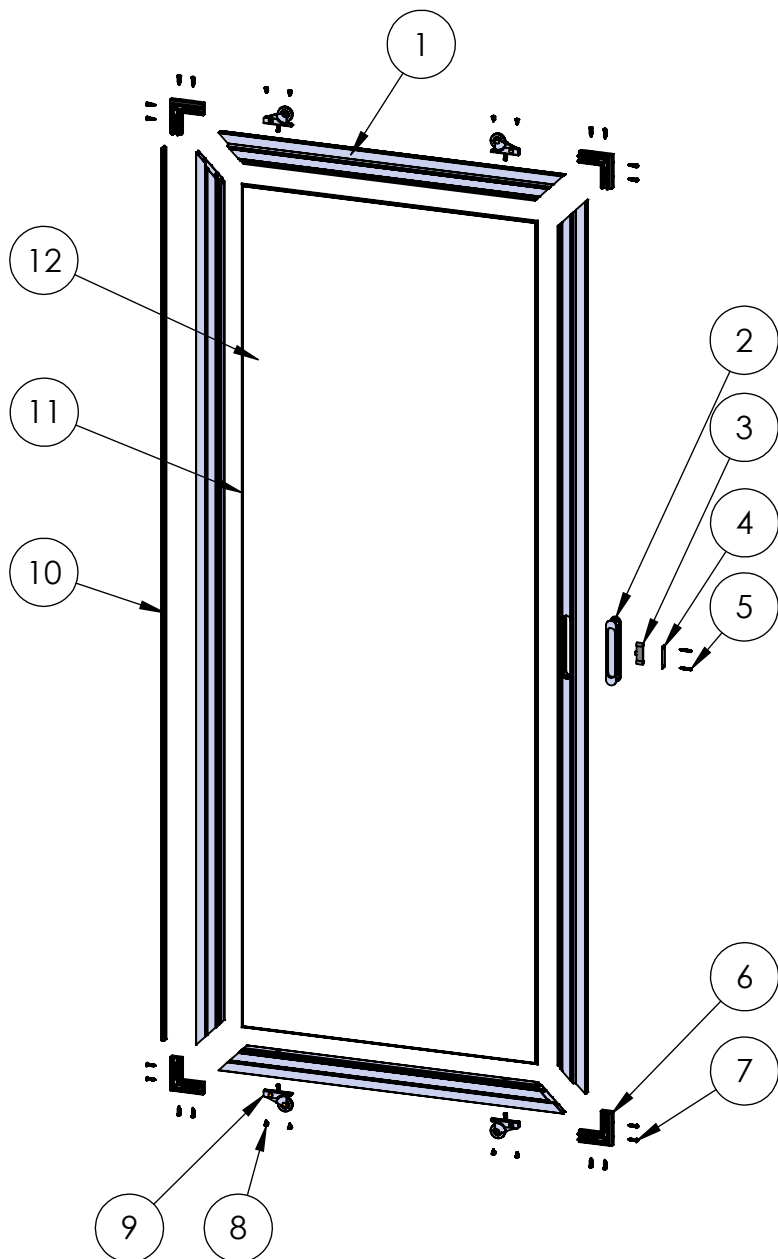
Optional HP Interlocker		
Part Number	Description	QTY.
3738	1" Slim Interlocker - HP	1

Description	
X Panel B.O.M.	
File Name	REV
Series 3000 OX Assembly	-
Released	1/7/2026
SHEET 6 OF 7	

PROPRIETARY AND CONFIDENTIAL

THE INFORMATION CONTAINED IN THIS DRAWING IS THE SOLE PROPERTY OF FLEETWOOD WINDOWS & DOORS.
ANY REPRODUCTION IN PART OR AS A WHOLE WITHOUT THE WRITTEN PERMISSION OF FLEETWOOD WINDOWS & DOORS IS PROHIBITED.

ASSEMBLY / PARTS LIST (B.O.M.)



EXTRUSIONS

ITEM NO.	PART NUMBER	DESCRIPTION	QTY.
1	145	Screen Extrusion	4

HARDWARE

ITEM NO.	PART NUMBER	DESCRIPTION	QTY.
2	27381	Screen Handle	1
3	27383	Magnetic Catch Spacer	1
4	27386	Magnetic Catch Strike	1
5	27388	#6 FHP, #4 Head - A, 1", SS, Clear	2
6	20489	Door Screen Corner Key	4
7	20314	#8 PHP - A, 3/4", SS, Clear	16
8	20225	#6 PHP - TEK, 3/8", SS, Clear	8
9	22905	Screen Roller	4
10	20531	Door Screen Bug Wiper	1
11	19130	Screen Rubber Spline .160	1
12	-	Screen Mesh	1

PROPRIETARY AND CONFIDENTIAL

THE INFORMATION CONTAINED IN THIS DRAWING IS THE SOLE PROPERTY OF FLEETWOOD WINDOWS & DOORS.
ANY REPRODUCTION IN PART OR AS A WHOLE WITHOUT THE WRITTEN PERMISSION OF FLEETWOOD WINDOWS & DOORS IS PROHIBITED.

Description Screen Assembly	
File Name Series 3000 OX Assembly	REV -
Released 1/7/2026	SHEET 7 OF 7