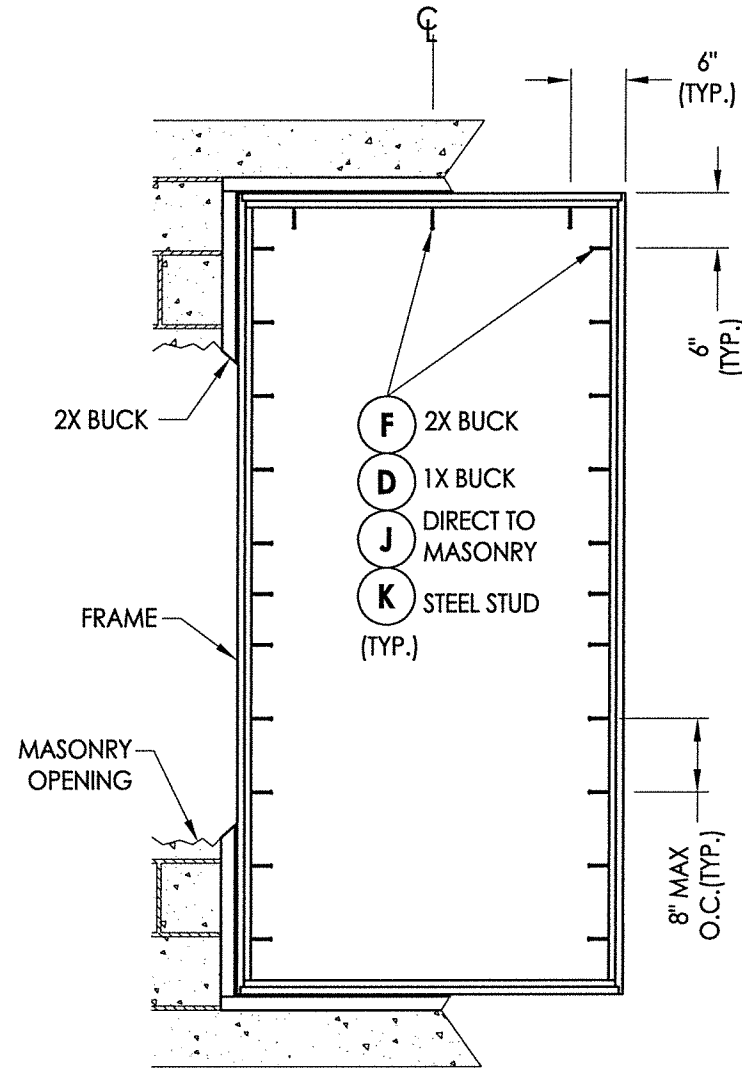


**2X BUCK ANCHORING**



**FRAME MOUNT ANCHORING**

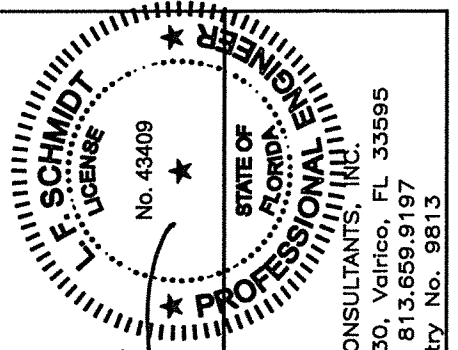
**CONCRETE ANCHOR NOTES:**

1. Concrete anchor locations at the corners may be adjusted to maintain the min. edge distance to mortar joints.
2. Concrete anchor locations noted as "MAX. ON CENTER" must be adjusted to maintain the min. edge distance to mortar joints, additional concrete anchors may be required to ensure the "MAX. ON CENTER" dimension are not exceeded.
3. Concrete anchor table:

| ANCHOR TYPE       | ANCHOR SIZE | MIN. EMBEDMENT | MIN. CLEARANCE TO MASONRY EDGE | MIN. CLEARANCE TO ADJACENT ANCHOR |
|-------------------|-------------|----------------|--------------------------------|-----------------------------------|
| ITW TAPCON®       | 1/4"        | 1-1/4"         | 2"                             | 4"                                |
| DeWALT ULTRACON+® | 1/4"        | 1-1/4"         | 1"                             | 4"                                |

**WOOD SCREW INSTALLATION NOTES:**

1. Maintain a minimum 5/8" edge distance, 1" end distance, & 1" o.c. spacing of wood screws to prevent the splitting of wood.



December 7, 2021  
 Documents Prepared By:  
 Lyndon F. Schmidt  
 P.E. No. 43409  
 R.W. BUILDING CONSULTANTS, INC.  
 P.O. Box 230, Valrico, FL 33595  
 Phone No.: 813.659.9197  
 FBPE Registry No. 9813

|                   |                           |
|-------------------|---------------------------|
| PRODUCT:          | FLEETWOOD WINDOWS & DOORS |
| PART OR ASSEMBLY: | BUCK & FRAME ANCHORING    |
| DATE:             | 12/01/21                  |
| SCALE:            | N.T.S.                    |
| DWG. BY:          | LFS                       |
| CHK. BY:          | RW                        |
| DRAWING NO.:      | FL-14904.15               |
| SHEET             | 6 OF 9                    |





