

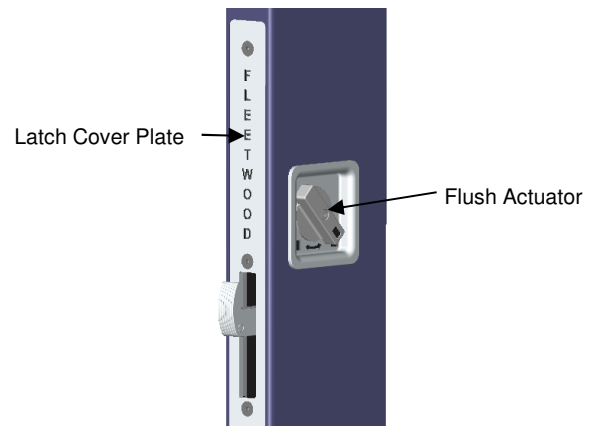
The **Archetype** and **Archetype Narrow** locking systems were designed for Fleetwood sliding door products. Consider the following design features:

1. **Archetype** Actuator
2. **Archetype** Flush Pulls
3. **Archetype** Second Latch Feature
4. **Archetype Narrow** Actuator & Pull
5. Maximum Security Stainless Steel Latch
6. Reinforced Adjustable Strike
7. Optional Actuator Only
8. Optional Lock-Out (During Construction)
9. Optional Keyed Lock
10. Optional **Archetype** Actuator Lever
11. Optional Edge Pull

1. Archetype Actuator

The **Archetype** Locking System is engaged by turning the flush actuator either left or right (see below). The actuator is made of 316 stainless steel, and then finished with a subtle brushed surface. The final process treats the exposed surfaces to electro-polishing for optimum corrosion protection. (Black powder coat paint is optional.)

- A flush design allows the lead panel to slide past adjacent panels or into a pocket wall.
- The face of the actuator indicates if the door is locked or unlocked.
- The Fleetwood branded latch cover plate completes the package.



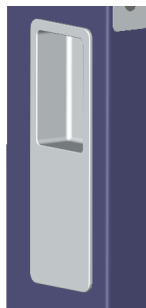
Archetype
(Interior View)

2. Archetype Flush Pulls

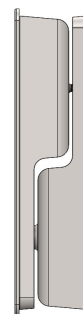
The Archetype Locking System comes standard with interior and exterior flush pulls (shown below). Each handle is recessed for the deepest pocket possible to allow for comfortable operation. Each pull is finished to match the actuator.



Interior Pull



Exterior Pull



Side View

3. Secondary Latch Feature

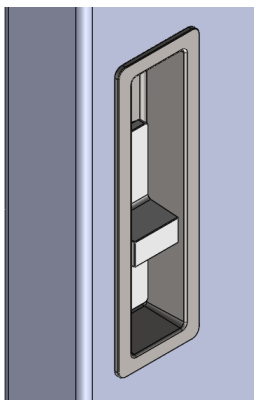
The **Archetype** and **Archetype Narrow** are offered with a secondary latch on Multi-Slide doors 96" or greater in height. This secondary latch is automatically engaged when the primary latch is actuated with a locking point that is 24" above the primary.



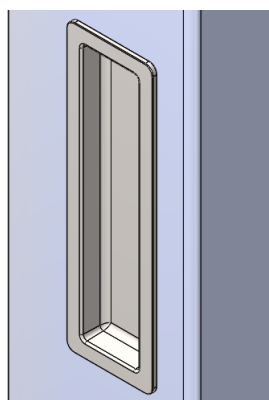
4. Archetype Narrow Actuator & Pull

The **Archetype Narrow** locking system is engaged by moving the flush actuator up or down within the interior pull. The actuator is made of 316 stainless steel and then finished with a subtle brushed surface. The final process treats the exposed surfaces to electro-polishing for optimum corrosion protection (black powder coat paint is optional).

- As with the **Archetype** actuator, the flush design allows the lead panel to slide past adjacent panels or into a pocket wall.
- The face of the actuator indicates if the door is locked or unlocked.
- For a more aesthetically pleasing look Fleetwood has designed the Interior Flush Actuator and Pull with hidden fasteners.
- The Fleetwood branded latch cover plate completes the package.



Interior Flush Actuator & Pull



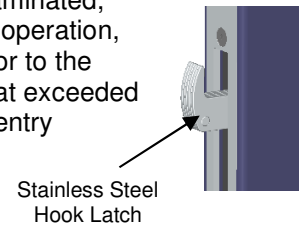
Exterior Flush Pull



Latch Cover Plate

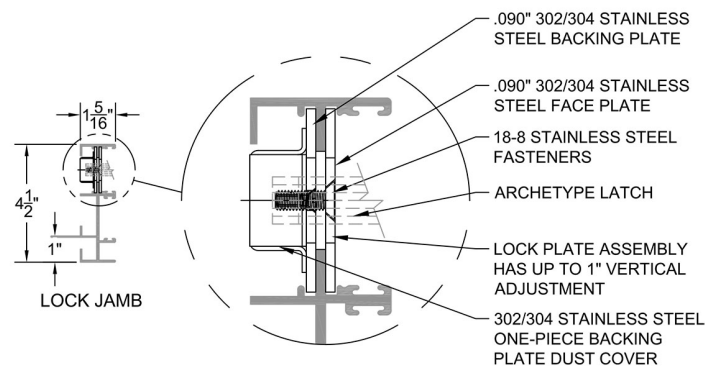
5. Maximum Security Stainless Steel Latch

Both the **Archetype** and **Archetype Narrow** locking systems utilize a 6-ply, laminated, stainless steel hook latch for unparalleled security. Though a seemingly basic operation, the patent was granted on the unique mechanics transitioning from the actuator to the latch. The system is so strong it passed the HVHZ hurricane impact testing that exceeded a 200 mph wind velocity and exceeds 800 lbs. to surpass government forced entry requirements.



6. Reinforced Flush Adjustable Strike

The **Archetype** strike plate consists of superior components, making it an ideal complement to the **Archetype** and **Archetype Narrow** latching systems.

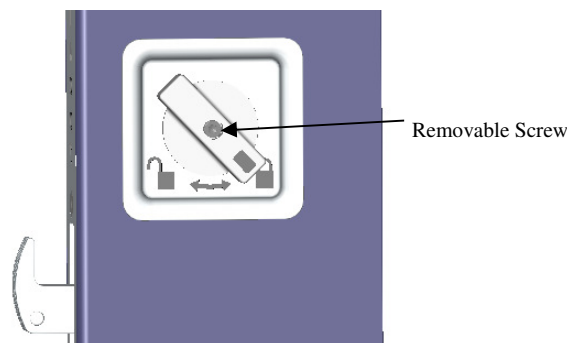


7. Optional Actuator Only

One option on the **Archetype** locking system is to purchase only the actuator without the flush pulls. With this option the depth of the actuator escutcheon allows a modest area for grasping, or for custom pulls to be applied.

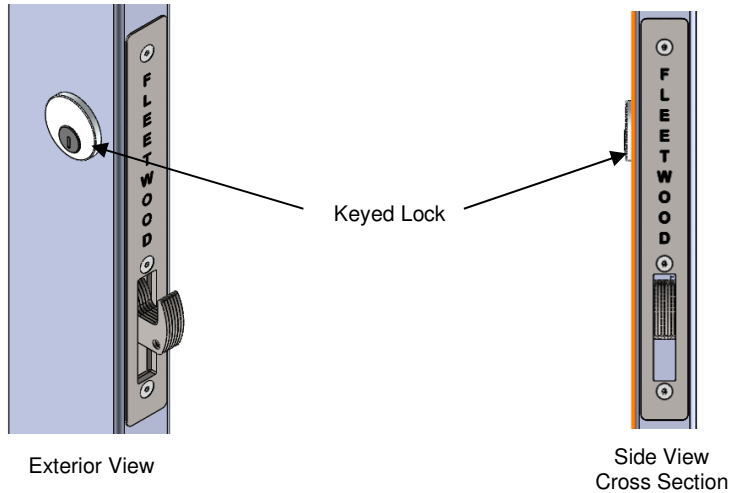
8. Optional Lock-Out Feature

The **Archetype** locking system allows the owner to remove the actuator from the lock once in a locked position. This has particular benefits during construction as it dissuades other trades from using the sliding doors as a passageway.



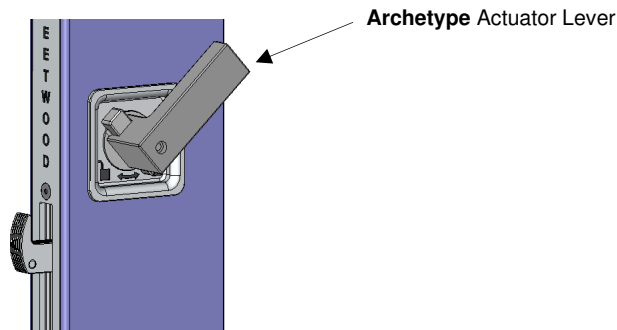
9. Optional Keyed Lock

Both **Archetype** and **Archetype Narrow** locking systems offer the option of a relatively flush exterior keyed lock. The cylinder is a 5-pin Schlage that can be keyed alike for multiple doors on the same project.



10. Optional **Archetype** Actuator Lever

The **Archetype** Actuator Lever is to help those that may have difficulty gripping the standard actuator. Once attached, the 2-3/4" long lever only requires 60 degrees of rotation to operate the latch. The lever is shipped separately and can quickly be installed. It is offered in brushed or black powder coated stainless steel. (Not available on the **Archetype Narrow**.)



11. Optional Edge Pull

All Multi-Slide doors come standard with Fleetwood's proprietary Edge Pull. The pull is mortised into the edge of the lock stile, just a few inches below the latch cover plate. The pulls are made of 316 cast stainless steel and come standard with a lifetime adjustable screw to ensure proper tension.

