

Installer Note: Damage or fabrication mistakes made to the product, during the field installation of the Archetype key cylinder, is the responsibility of the installer.

1. Parts List and Recommended Tools



Parts List:	ID #	Color	Key Alike/Different
1) Key Cylinder Template	24126	n/a	n/a
2) #8-32 FHP, 1-1/8"	25343	n/a	n/a
3) Set Screw	24935	n/a	n/a
4) Bushing	25681	n/a	n/a
5) Cylinder Cam	24780	n/a	n/a
6) Keyed Cylinder	24784	Black	Keyed Alike
	25356	Brushed SS	Keyed Alike
	24783	Black	Keyed Different
	24782	Brushed SS	Keyed Different

Recommended Tools:

- | | |
|-----------------------------|------------------------------|
| 1) Hex Keys (3/32" & 5/64") | 5) Pencil |
| 2) Phillips Screwdriver | 6) 1/4" Drill Bit |
| 3) 1-3/16" Bimetal Hole Saw | 7) Drill |
| 4) Round File | 8) Measuring Tape / Calipers |

2. Remove primary latch cover plate (Lead Stile Shown) using 3/32" Hex Key.



3. Attach key cylinder template (Caution, do not scratch extrusion).

NOTE: Fasten with appropriate screw according to the type of lock stile.

- **lock stile** – secure cylinder template using a cover plate screw.
- **lock stile with yoke** – secure cylinder template using a #8-32 FHP, 1-1/8" screw.



Archetype Lock Stile



Archetype Lock Stile with Yoke

4. Use a pencil to mark the center of the key cylinder hole location then remove template.

NOTE: Hole selection is dependent on the type of lock stile.

- **lock stile** uses the first hole from the angled edge of the template.
- **lock stile with yoke** uses the second hole from the angled edge of the template.



Archetype Lock Stile



Archetype Lock Stile with Yoke

5. Verify hole location.

NOTE: Hole location should be measured from the edge of the lead stile to the drawn center mark.

- **lock stile** should be marked 1-3/4" from edge to center.
- **lock stile with yoke** should be marked 2-3/8" from edge to center.

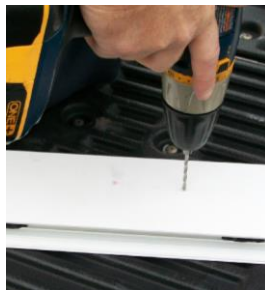


Archetype Lock Stile



Archetype Lock Stile with Yoke

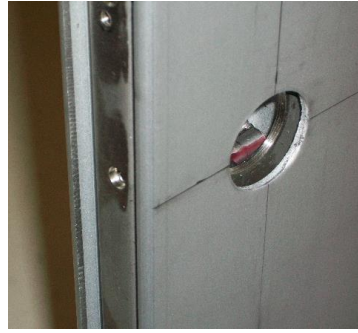
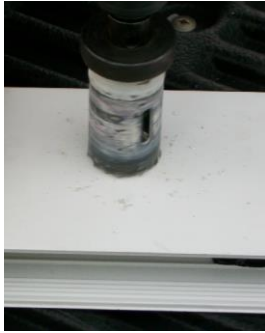
6. Drill a pilot hole (approximately 1/4") to provide guide for bimetal hole saw.



Archetype Key Cylinder

Field Installation Instructions

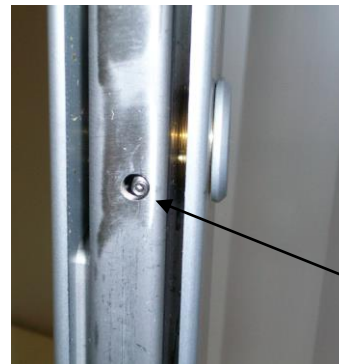
7. Cut 1-3/16" diameter hole with a bimetal hole saw. **Note:** Wood hole saws should not be used! Use a file as necessary to clean up any burrs around the hole. Use compressed air to remove aluminum chips from lead stile and Archetype latch.



8. Install key cylinder by rotating clockwise until flush with Lead Stile. Then rotate key cylinder counterclockwise until the key slot is at the bottom and the groove in key cylinder is aligned with the setscrew. With 5/64" Hex Key turn setscrew clockwise until it is tight against the key cylinder. The setscrew prevents rotation of the key cylinder.



Groove in
Key Cylinder



Setscrew

9. Check operation of key cylinder and reinstall primary latch cover plate (Lead Stile shown).

