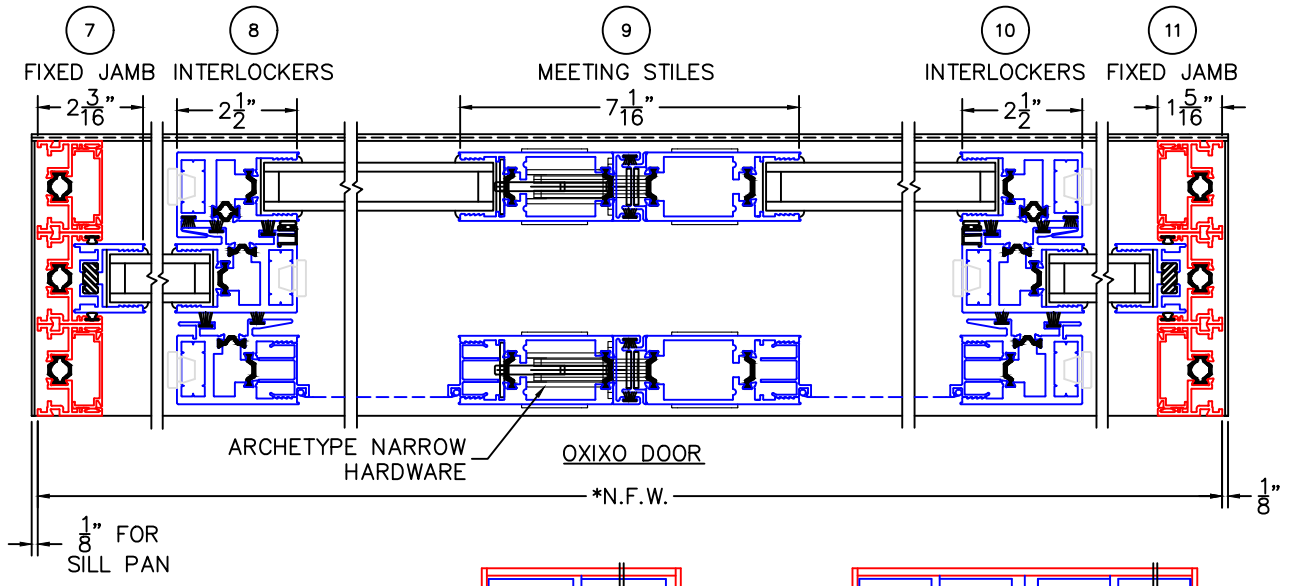
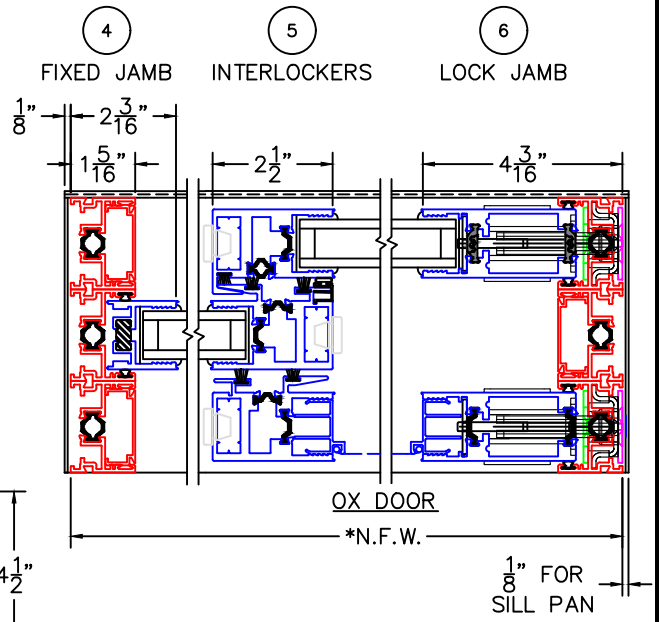
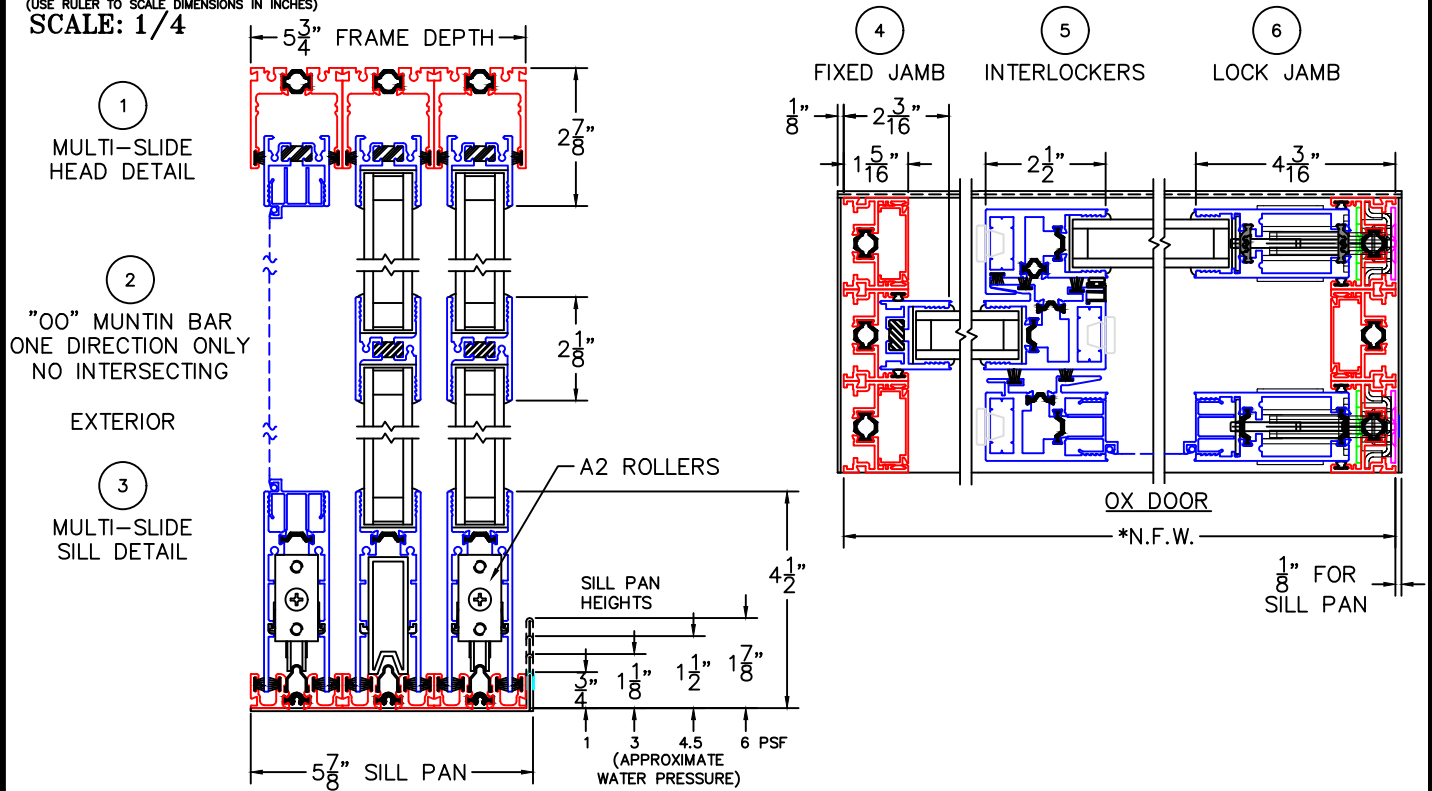




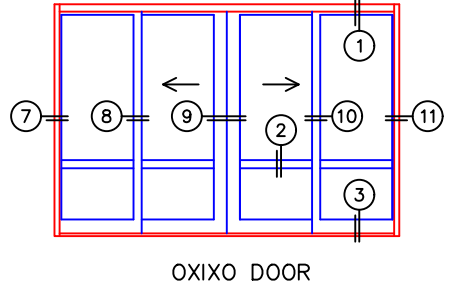
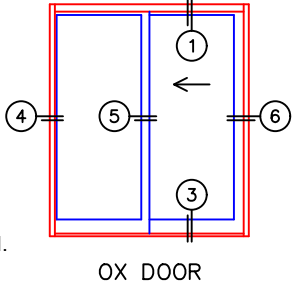
(USE RULER TO SCALE DIMENSIONS IN INCHES)

SCALE: 1/4"

MULTI-SLIDE DOOR DETAILS WITH SCREENS



NOTE: CENTERLINES ARE NOT DIVIDED EQUALLY; CONFIRM CENTERLINES WHEN REQUIRED.



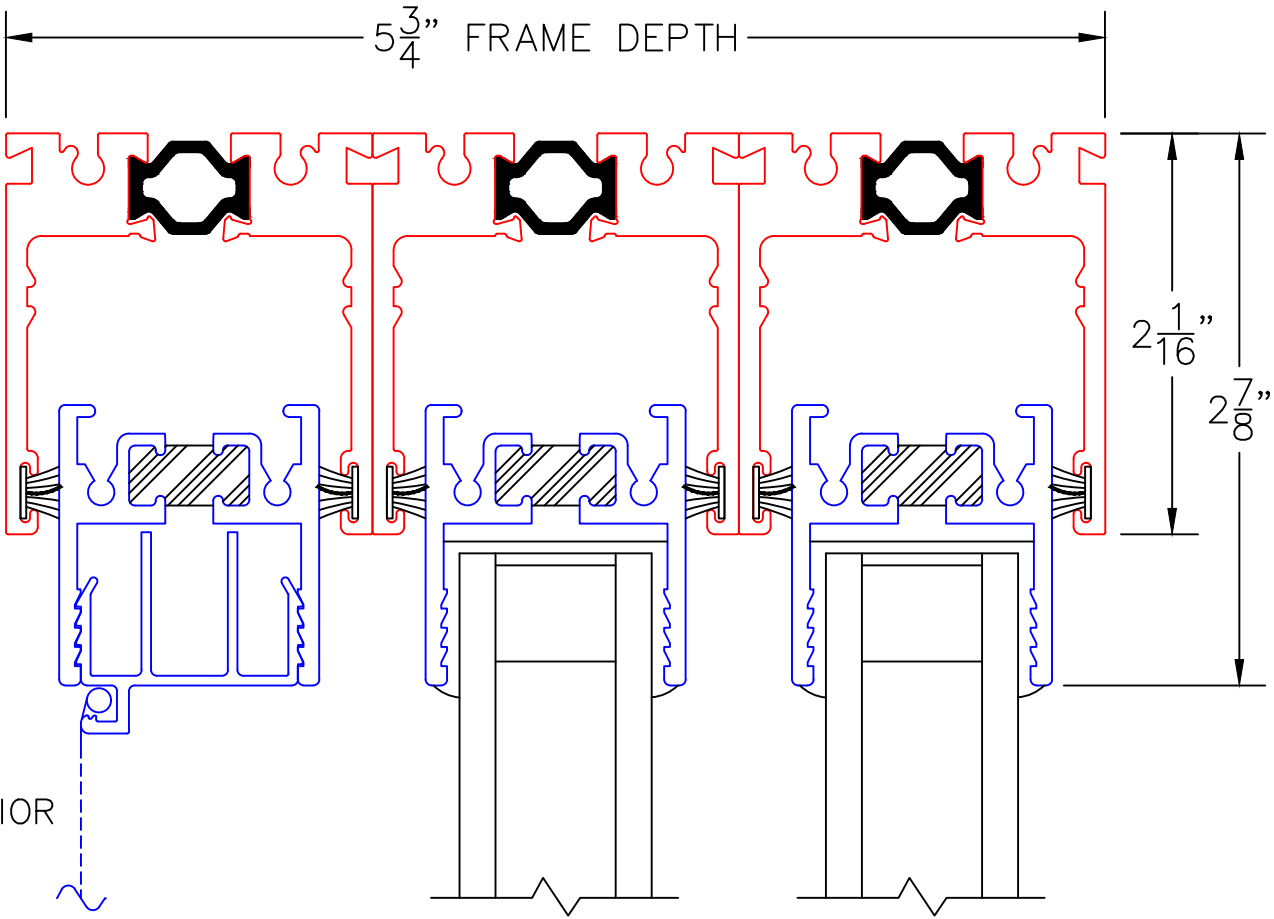
- GLASS PENETRATION: 11/16"
- *NET FRAME WIDTH DOES NOT INCLUDE SILL PAN.
- SILL PAN EXTENDS 1/8" BEYOND EACH JAMB.
- FOR ADDITIONAL OPTIONS AND UPGRADES SEE DRAWINGS 3070-T-08 AND 3070-T-09.
- EXTERIOR RATED PRODUCTS HAVE WEEP SLOTS ON HORIZONTAL SILLS.

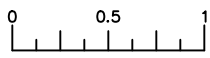
0 0.5 1
(USE RULER TO SCALE DIMENSIONS IN INCHES)
SCALE: FULL

MULTI-SLIDE DOOR DETAILS
OX DOOR SHOWN

1

MULTI-SLIDE
HEAD DETAIL





(USE RULER TO SCALE DIMENSIONS IN INCHES)

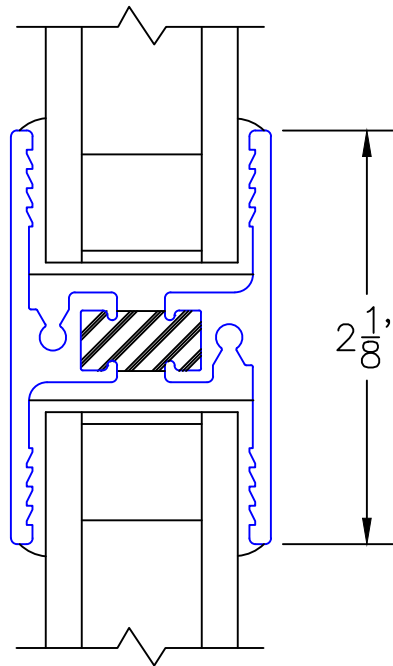
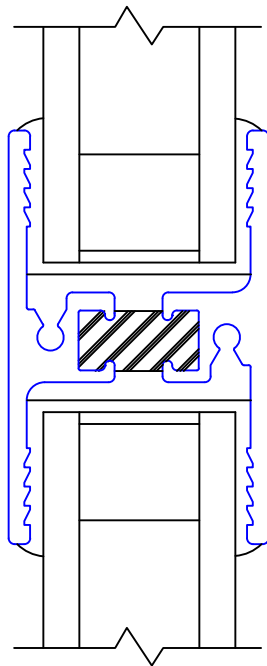
SCALE: FULL

MULTI-SLIDE DOOR DETAILS
OX DOOR SHOWN

2

"OO" MUNTIN BAR
ONE DIRECTION ONLY
NO INTERSECTING

EXTERIOR



2 1/8"

MULTI-SLIDE DOOR DETAILS OX DOOR SHOWN

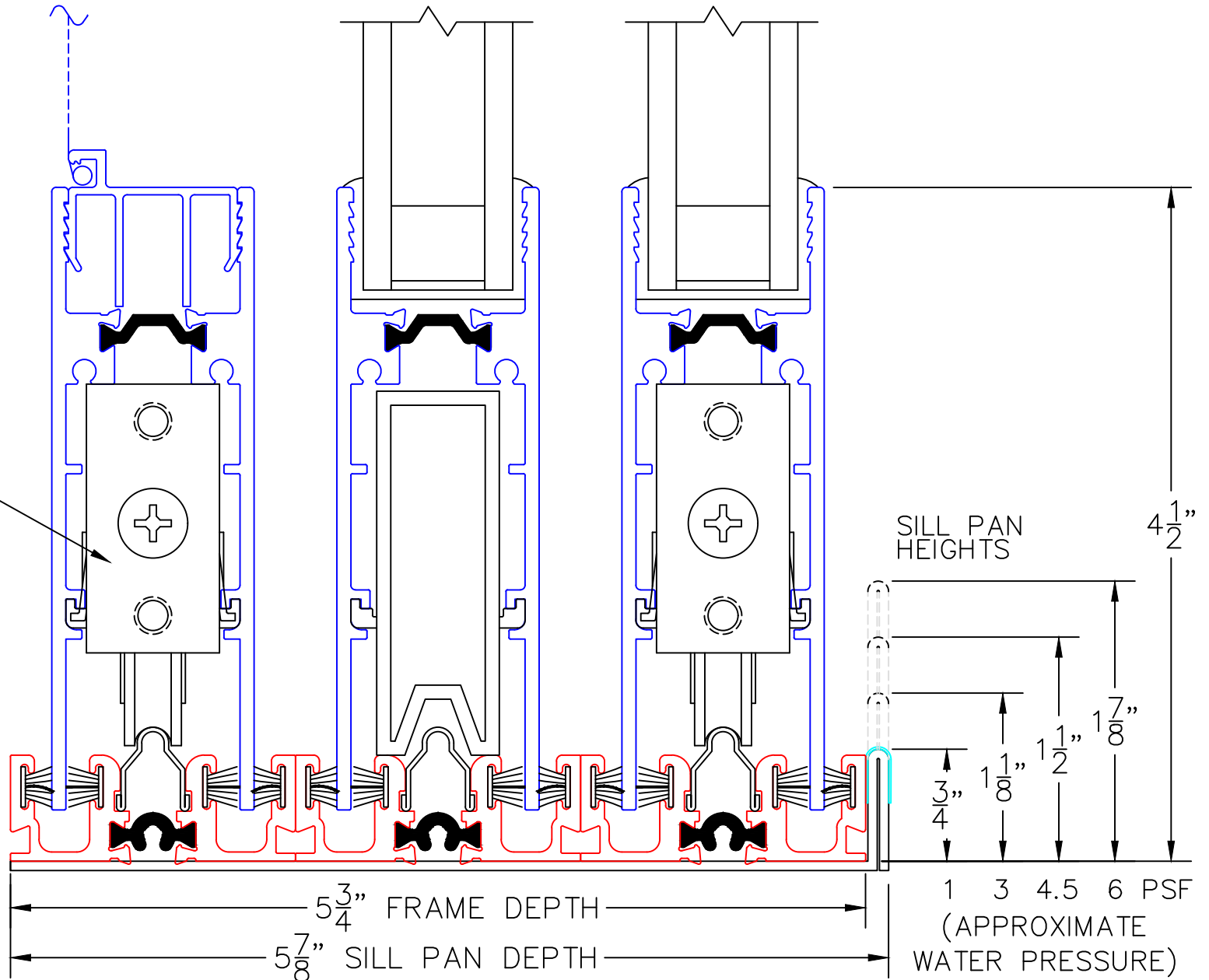
0 0.5 1
(USE RULER TO SCALE DIMENSIONS IN INCHES)
SCALE: FULL

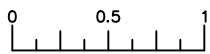
EXTERIOR

3

MULTI-SLIDE
SILL DETAIL

A2 ROLLERS





(USE RULER TO SCALE DIMENSIONS IN INCHES)

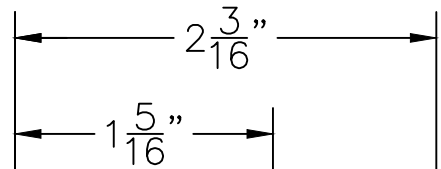
SCALE: FULL

MULTI-SLIDE DOOR DETAILS
OX DOOR SHOWN

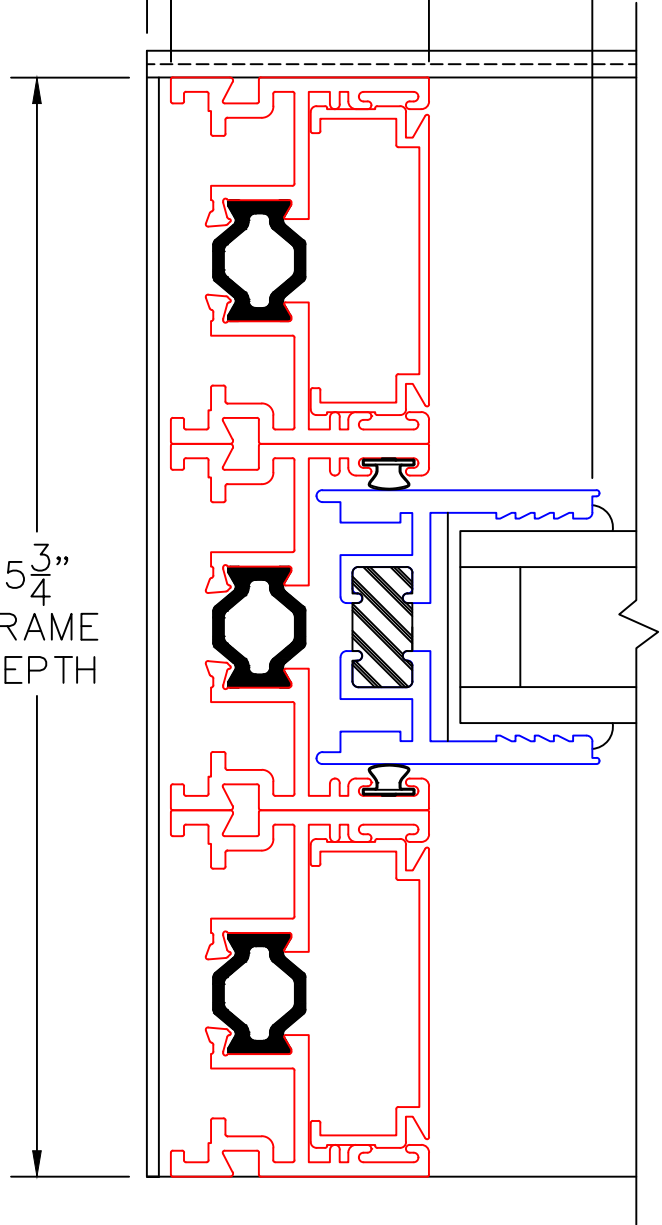
4

FIXED JAMB

$\frac{1}{8}$ " FOR
SILL PAN



$5\frac{3}{4}$ "
FRAME
DEPTH



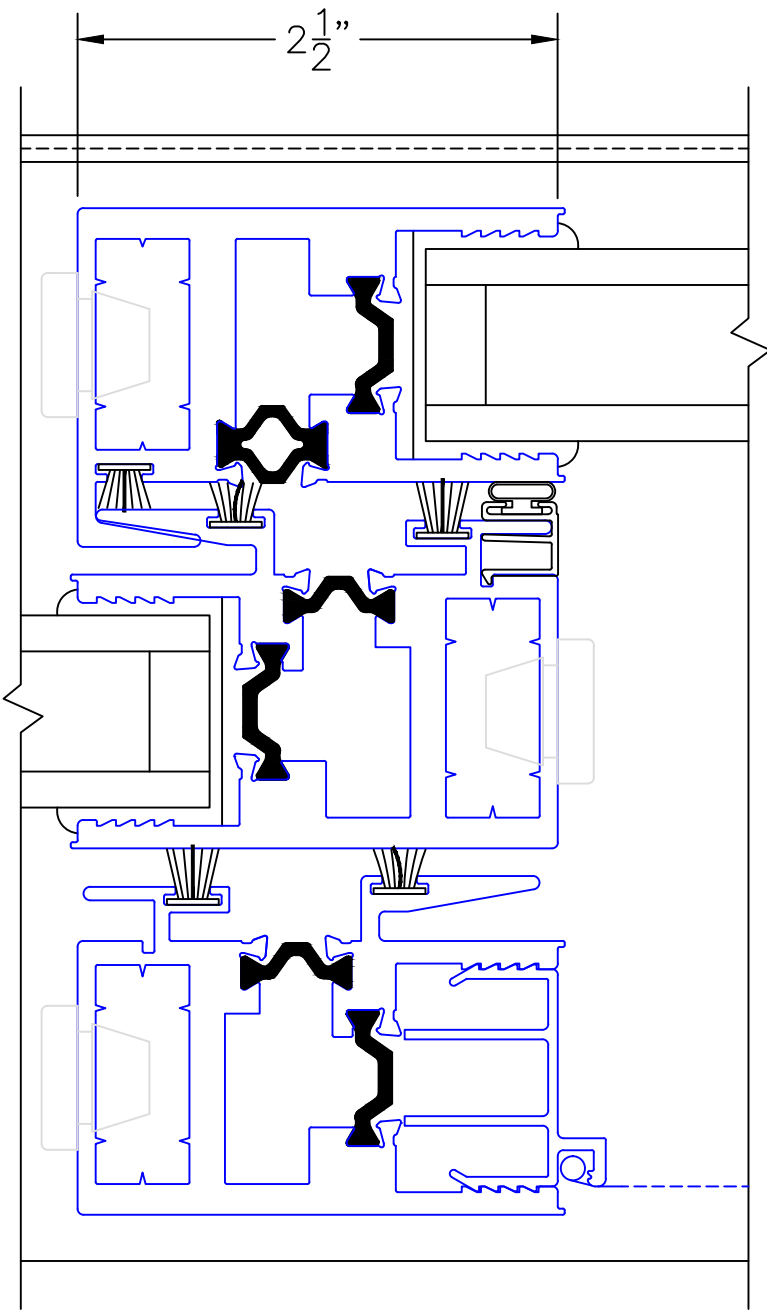
EXTERIOR

0 0.5 1
(USE RULER TO SCALE DIMENSIONS IN INCHES)
SCALE: FULL

MULTI-SLIDE DOOR DETAILS
OX DOOR SHOWN

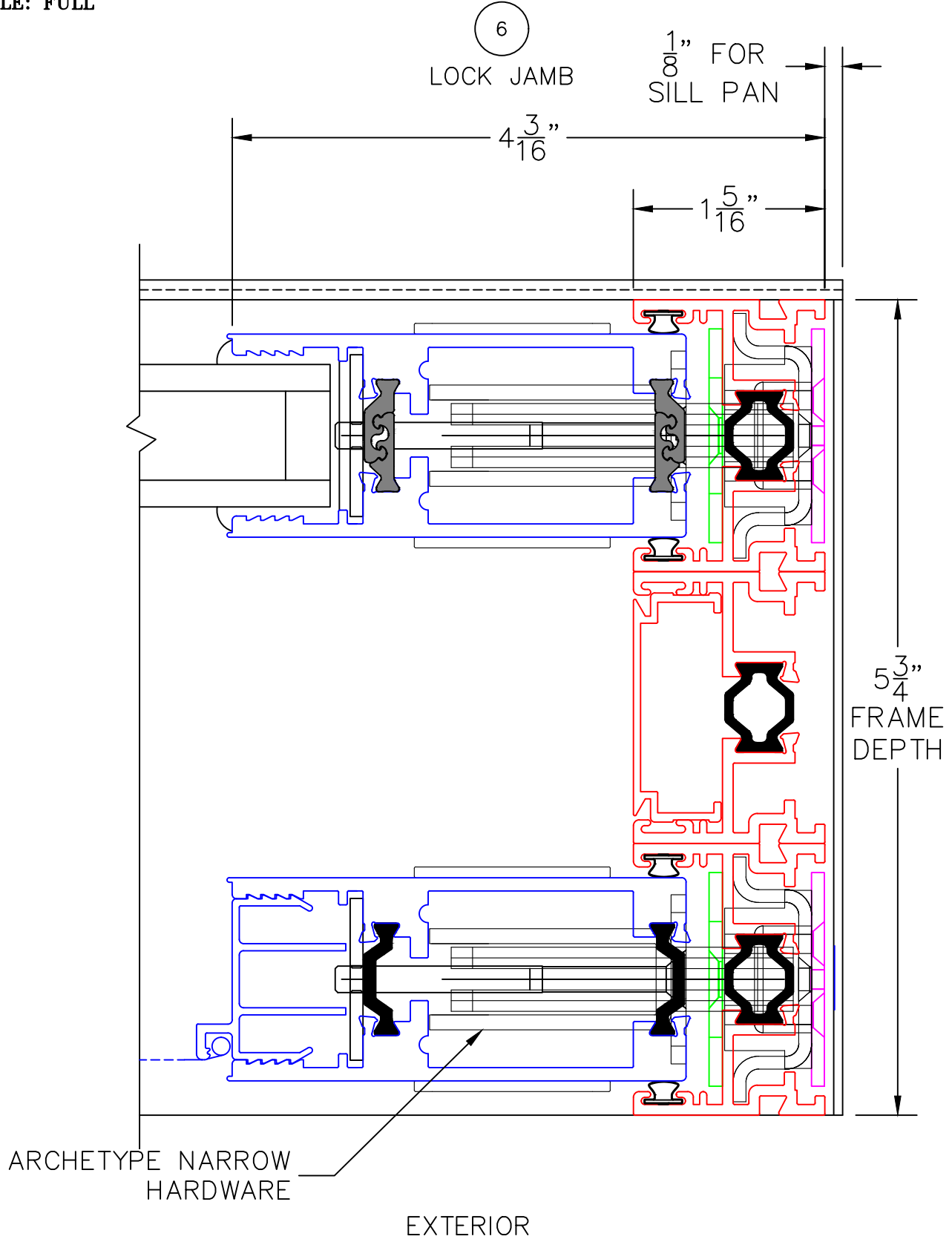
5

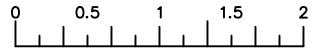
INTERLOCKERS



0 0.5 1
(USE RULER TO SCALE DIMENSIONS IN INCHES)
SCALE: FULL

MULTI-SLIDE DOOR DETAILS
OX DOOR SHOWN





(USE RULER TO SCALE DIMENSIONS IN INCHES)

SCALE: 3/4

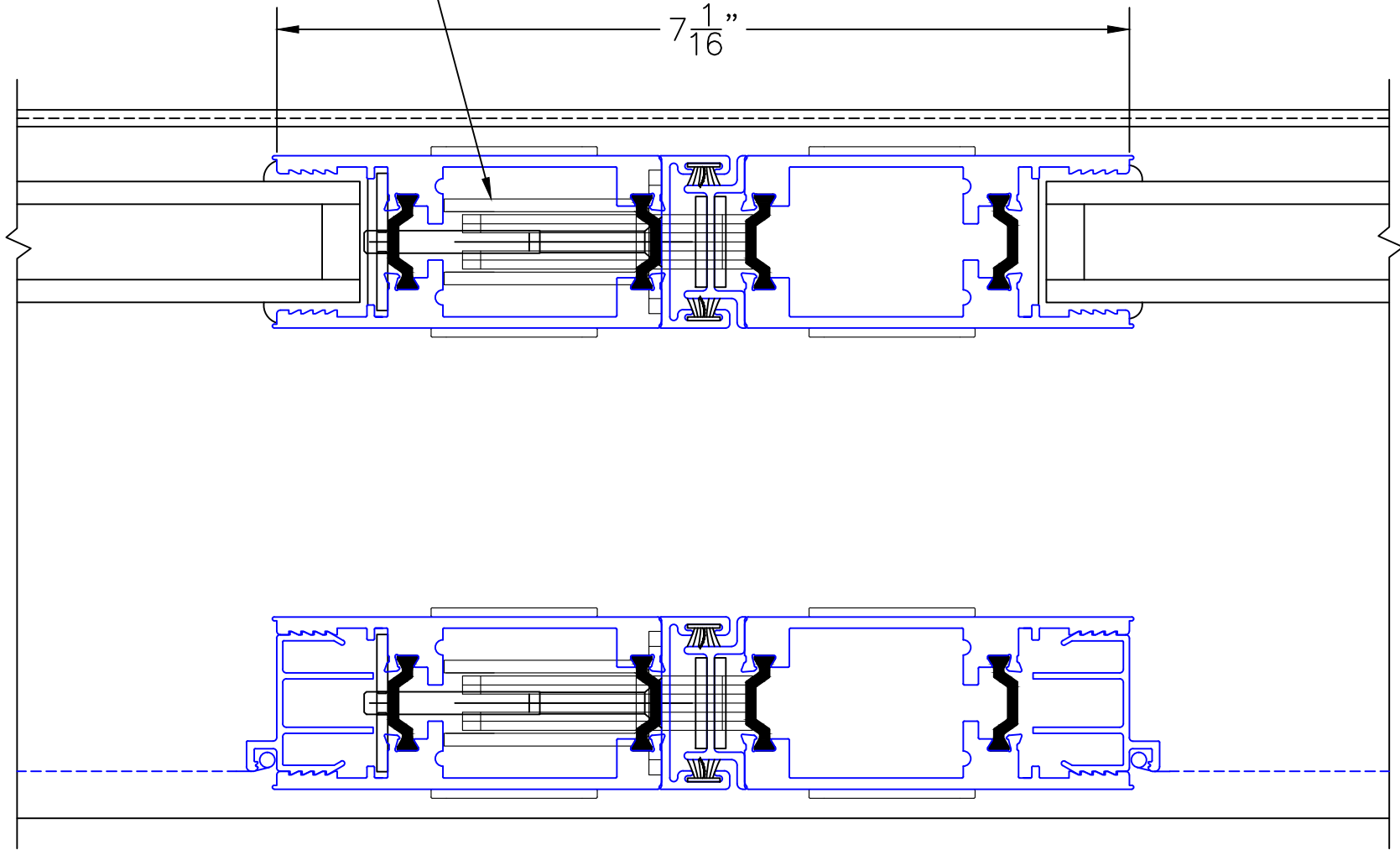
MULTI-SLIDE DOOR DETAILS OXIXO DOOR SHOWN

9

MEETING STILES

ARCHETYPE NARROW
HARDWARE

7 ¹/₁₆"



EXTERIOR