



Testing Evaluation Laboratories, Inc.

2002 Wood Court Suite 1 – Plant City, FL 33563

Phone: 813-754-9887

ASTM E 1886-05 / ASTM E 1996-06
Missile Level "D" (Includes Wind Zone 4)

TEST REPORT SUMMARY

Test Report Issued To:

Fleetwood Windows and Doors
1 Fleetwood Way
Corona, CA 92879

3300 GLACIER SLIDING GLASS DOORS

Title of Test	Results		
	Specimens 3, 4 and 5 240.00 x 120.00 – OXXO	Specimen 6 180.00 x 120.00 - OXO	Specimen 8 180.00 x 120.00 - OOX
Impact	Pass	Pass	Pass
Fatigue Load Cycling	+50.0/- 50.0 psf	+50.0/- 50.0 psf	+35.0/- 35.0 psf

Reference should be made to Report No. TEL 01991014 for complete test specimen description and data. For corresponding data regarding AAMA/WDMA/CSA 101/I.S./2/A440-08 (A440S1-09) reference should be made to Report No. TEL 01991013.

For Testing Evaluation Laboratories, Inc.


Vivian K. Wright,
President



Testing Evaluation Laboratories, Inc.

2002 Wood Court Suite 1 – Plant City, FL 33563

Phone: 813-754-9887

TEST RESULTS

IAS Lab Certification Number: TL-299

Report No: TEL 01991014

Test Dates: January 16, 2014
through March 18, 2014

Report Date: March 21, 2014

Issued to:

Fleetwood Windows and Doors
One Fleetwood Way
Corona, CA 92879

Project Summary: Testing Evaluation Laboratories, Inc. (TEL) was contracted by Fleetwood Windows and Doors to perform tests on the 3300 Glacier Sliding Glass Door at TEL's Plant City, FL test facility.

Test specimen descriptions and results are reported herein.

Test Specifications: The test specimens were evaluated in accordance with the following:

ASTM E 1886-05 / ASTM E 1996-06
Missile Level "D" (Includes Wind Zone 4)

Test Specimen Description:

Series / Model:	3300 Glacier Sliding Glass Door
Type:	Aluminum Sliding Glass Doors
Overall Size:	240.00" x 120.00" – Specimens 3, 4 and 5 - OXXO 180.00" x 120.00" – Specimen 6 - OXO 180.00" x 120.00" – Specimen 8 - OOX
Daylight Opening:	54.75 " x 112.75" – Specimens 3, 4 and 5 (End Panels) 54.63 " x 112.75" – Specimens 3, 4 and 5 (Center Panels) 55.06" x 112.75" – Specimen 6 (All Panels) 55.06" x 112.75" – Specimen 8 (All Panels)
Glazing Detail:	Laminated Monolithic Glass – (Specimens 3, 4 and 5) Insulated Laminated Glass – (Specimens 6 and 8) (See attached drawing for details)
Frame Material:	Aluminum
Finish:	Mill Finish

For Tested Elevation, Vertical Cross Sections, Horizontal Cross Sections, Components, Frame Anchoring, Glazing Detail and Bill of Materials See Attached Drawing #L-7112, #L-7113. and #L-7114

IMPACT AND CYCLING TESTS

Specimen 3 – 240.0" x 120.0" Aluminum Sliding Glass Door (OXXO)

ASTM E1886-05/1996-06 – Large Missile Impact (2 x 4 Southern Yellow Pine)

Cond. Temp Of Specimen	Missile Level	Missile Weight	Missile Length	Muzzle Distance From Specimen
76°F	D	9.0 lbs, 1 oz	8'-1/4"	17'1"

Impact Location	Results	X - Measurement	Y - Measurement	Speed
1	Pass	132.0"	11.0"	49.7 fps
2	Pass	154.0"	61.0"	50.1 fps
3	Pass	211.0"	60.5"	50.1 fps
4	Pass	190.0"	10.5"	49.9 fps
5	Pass	182.0"	60.0"	49.9 fps
<p>Orientation of Missile at Impact was within +/-5° of horizontal. None of the impacts penetrated the specimens. "X" measurement is from the left edge of test specimen. "Y" measurement is from the bottom edge of test specimen.</p>				

ASTM E1886-05/1996-06– Fatigue Load Cycling Design Pressure +50.0 psf / -50.0 psf

Positive % of Test Load	Positive Pressure Range (psf)	Number Of Cycles	Average Cycle Time (Sec)
20% to 50%	10.0 to 25.0	3500	2.46
0% to 60%	0.0 to 30.0	300	2.49
50% to 80%	25.0 to 40.0	600	1.92
30% to 100%*	15.0 to 50.0	100	2.86

Negative % of Test Load	Negative Pressure Range (psf)	Number Of Cycles	Average Cycle Time (Sec)
30% to 100%*	15.0 to 50.0	50	2.51
50% to 80%	25.0 to 40.0	1050	1.81
0% to 60%	0.0 to 30.0	50	2.25
20% to 50%	10.0 to 25.0	3350	1.95
<p>*Panel deflected 2.75" from original plane at 100% Positive load and 4.00" from original plane at 100% Negative load. At the completion of cycles the door panel was operable. There were no tears in the film. In our opinion, the tape and film used to seal for air leakage did not influence the results of the test.</p>			

Jarrett Wright and James Hayhurst, Test Technicians

Mfg Observers – Joe Zammitt

IMPACT AND CYCLING TESTS

Specimen 4 – 240.0" x 120.0" Aluminum Sliding Glass Door (OXXO)

ASTM E1886-05/1996-06 – Large Missile Impact (2 x 4 Southern Yellow Pine)

Cond. Temp Of Specimen	Missile Level	Missile Weight	Missile Length	Muzzle Distance From Specimen
76°F	D	9.0 lbs, 1 oz	8'-1/4"	17'1"

Impact Location	Results	X - Measurement	Y - Measurement	Speed
1	Pass	132.0"	10.5"	49.9 fps
2	Pass	153.75"	61.0"	49.8 fps
3	Pass	211.25"	61.0"	50.0 fps
4	Pass	190.0"	11.0"	49.9 fps
5	Pass	181.75"	60.0"	50.1 fps
<p>Orientation of Missile at Impact was within +/-5° of horizontal. None of the impacts penetrated the specimens. "X" measurement is from the left edge of test specimen. "Y" measurement is from the bottom edge of test specimen.</p>				

ASTM E1886-05/1996-06– Fatigue Load Cycling

Design Pressure +50.0 psf / -50.0 psf

Positive % of Test Load	Positive Pressure Range (psf)	Number Of Cycles	Average Cycle Time (Sec)
20% to 50%	10.0 to 25.0	3500	2.35
0% to 60%	0.0 to 30.0	300	2.24
50% to 80%	25.0 to 40.0	600	2.05
30% to 100%*	15.0 to 50.0	100	2.78

Negative % of Test Load	Negative Pressure Range (psf)	Number Of Cycles	Average Cycle Time (Sec)
30% to 100%*	15.0 to 50.0	50	3.00
50% to 80%	25.0 to 40.0	1050	2.06
0% to 60%	0.0 to 30.0	50	2.72
20% to 50%	10.0 to 25.0	3350	2.22
<p>*Panel deflected 2.75" from original plane at 100% Positive load and 4.13" from original plane at 100% Negative load. At the completion of cycles the door panel was operable. There were no tears in the film. In our opinion, the tape and film used to seal for air leakage did not influence the results of the test.</p>			

Jarrett Wright and James Hayhurst, Test Technicians

Mfg Observers – Joe Zammitt

IMPACT AND CYCLING TESTS

Specimen 5 – 240.0" x 120.0" Aluminum Sliding Glass Door (OXXO)

ASTM E1886-05/1996-06 – Large Missile Impact (2 x 4 Southern Yellow Pine)

Cond. Temp Of Specimen	Missile Level	Missile Weight	Missile Length	Muzzle Distance From Specimen
76°F	D	9.0 lbs, 1 oz	8'-1/4"	17'1"

Impact Location	Results	X - Measurement	Y - Measurement	Speed
1	Pass	120.50"	54.00"	49.7 fps
2	Pass	154.00"	61.00"	50.1 fps
3	Pass	175.00"	110.00"	49.8 fps
4	Pass	182.00"	62.00"	50.0 fps
5	Pass	210.00"	62.00"	50.1 fps
6	Pass	232.00"	110.00"	49.8 fps
<p>Orientation of Missile at Impact was within +/-5° of horizontal. None of the impacts penetrated the specimens. "X" measurement is from the left edge of test specimen. "Y" measurement is from the bottom edge of test specimen.</p>				

ASTM E1886-05/1996-06– Fatigue Load Cycling Design Pressure +50.0 psf / -50.0 psf

Positive % of Test Load	Positive Pressure Range (psf)	Number Of Cycles	Average Cycle Time (Sec)
20% to 50%	10.0 to 25.0	3500	2.44
0% to 60%	0.0 to 30.0	300	2.44
50% to 80%	25.0 to 40.0	600	2.25
30% to 100%*	15.0 to 50.0	100	2.47

Negative % of Test Load	Negative Pressure Range (psf)	Number Of Cycles	Average Cycle Time (Sec)
30% to 100%*	15.0 to 50.0	50	2.52
50% to 80%	25.0 to 40.0	1050	2.16
0% to 60%	0.0 to 30.0	50	2.15
20% to 50%	10.0 to 25.0	3350	1.80
<p>*Panel deflected 2.63" from original plane at 100% Positive load and 3.38" from original plane at 100% Negative load. At the completion of cycles the door panel was operable. There were no tears in the film. In our opinion, the tape and film used to seal for air leakage did not influence the results of the test.</p>			

Jarrett Wright and James Hayhurst, Test Technicians

Mfg Observers – Joe Zammitt

IMPACT AND CYCLING TESTS

Specimen 6 – 180.0" x 120.0" Aluminum Sliding Glass Door (OXO)

ASTM E1886-05/1996-06 – Large Missile Impact (2 x 4 Southern Yellow Pine)

Cond. Temp Of Specimen	Missile Level	Missile Weight	Missile Length	Muzzle Distance From Specimen
74°F	D	9.0 lbs, 3 oz	8'-0"	17'0"

Impact Location	Results	X - Measurement	Y - Measurement	Speed
1	Pass	111.00"	10.00"	50.0 fps
2	Pass	94.00"	61.00"	49.8 fps
3	Pass	121.00"	60.00"	50.1 fps
Orientation of Missile at Impact was within +/-5° of horizontal. None of the impacts penetrated the specimens. "X" measurement is from the left edge of test specimen. "Y" measurement is from the bottom edge of test specimen.				

ASTM E1886-05/1996-06– Fatigue Load Cycling Design Pressure +50.0 psf / -50.0 psf

Positive % of Test Load	Positive Pressure Range (psf)	Number Of Cycles	Average Cycle Time (Sec)
20% to 50%	10.0 to 25.0	3500	2.22
0% to 60%	0.0 to 30.0	300	2.15
50% to 80%	25.0 to 40.0	600	2.31
30% to 100%*	15.0 to 50.0	100	2.78

Negative % of Test Load	Negative Pressure Range (psf)	Number Of Cycles	Average Cycle Time (Sec)
30% to 100%*	15.0 to 50.0	50	2.93
50% to 80%	25.0 to 40.0	1050	2.52
0% to 60%	0.0 to 30.0	50	2.79
20% to 50%	10.0 to 25.0	3350	2.28
*Panel deflected 3.00" from original plane at 100% Positive load and 4.25" from original plane at 100% Negative load. At the completion of cycles the door panel was operable. There were no tears in the film. In our opinion, the tape and film used to seal for air leakage did not influence the results of the test.			

Jarrett Wright and James Hayhurst, Test Technicians

Mfg Observers – Joe Zammitt

IMPACT AND CYCLING TESTS

Specimen 8 – 180.0" x 120.0" Aluminum Sliding Glass Door (OOX)

ASTM E1886-05/1996-06 – Large Missile Impact (2 x 4 Southern Yellow Pine)

Cond. Temp Of Specimen	Missile Level	Missile Weight	Missile Length	Muzzle Distance From Specimen
75°F	D	9.0 lbs, 3 oz	8'-0"	17'0"

Impact Location	Results	X - Measurement	Y - Measurement	Speed
1	Pass	59.00"	60.00"	50.1 fps
2	Pass	168.00"	11.00"	50.1 fps
3	Pass	146.00"	62.00"	49.9 fps
Orientation of Missile at Impact was within +/-5° of horizontal. None of the impacts penetrated the specimens. "X" measurement is from the left edge of test specimen. "Y" measurement is from the bottom edge of test specimen.				

ASTM E1886-05/1996-06– Fatigue Load Cycling Design Pressure +35.0 psf / -35.0 psf

Positive % of Test Load	Positive Pressure Range (psf)	Number Of Cycles	Average Cycle Time (Sec)
20% to 50%	7.0 to 17.5	3500	1.76
0% to 60%	0.0 to 21.0	300	2.64
50% to 80%	17.5 to 28.0	600	1.28
30% to 100%*	10.5 to 35.0	100	2.51

Negative % of Test Load	Negative Pressure Range (psf)	Number Of Cycles	Average Cycle Time (Sec)
30% to 100%*	10.5 to 35.0	50	2.37
50% to 80%	17.5 to 28.0	1050	1.42
0% to 60%	0.0 to 21.0	50	2.49
20% to 50%	7.0 to 17.5	3350	1.72
*Panel deflected 2.13" from original plane at 100% Positive load and 2.50" from original plane at 100% Negative load. At the completion of cycles the door panel was operable. There were no tears in the film. In our opinion, the tape and film used to seal for air leakage did not influence the results of the test.			

Jarrett Wright and James Hayhurst, Test Technicians

Mfg Observers – Joe Zammitt

Conditions, Terms, and General Notes Regarding These Tests

The product tested Has Been compared to the detailed drawing, bill of materials and fabrication information supplied by the client so named herein. Our analysis, which includes dimensional and component description comparisons, indicate the tested product and engineering information supplied by the client "Are Equivalent". The report and representative samples will be retained for four years from the date of initial test.

These test results were obtained by employing all requirements of the designated test methods with no Deviations unless explicitly noted in test report. The test results and specimen supplied for testing are in compliance with the reference.

The test results are specific to the product tested by this laboratory and of the sample supplied by the client named herein, and they relate to no other product either manufactured by the client, a fabricator of the client or of the client or of installed field performance.

This test report does not constitute certification of this product, but only that the above test results were obtained using the designated test methods and they indicate compliance with the performance requirements (paragraphs as listed) of the above referenced specifications.

Testing Evaluation Laboratories, Inc. makes no opinions or endorsements regarding this product and its performance. This report may not be reproduced or quoted in partial form without the expressed written approval of Testing Evaluation Laboratories, Inc.

Testing Evaluation Laboratories, Inc.'s letter, reports, its name or insignia or mark are for the exclusive use of the client so named herein and any other use is strictly prohibited. The report, letters and the name of Testing Evaluation Laboratories, Inc., its seal or mark shall not be used in any circumstance to the general public or in any advertising.

Limitation of liability: Due diligence was used in performing the tests and reporting the results. By acceptance of this report, this client agrees to hold harmless and indemnify Testing Evaluation Laboratories, Inc., its employees, sub-contractors, officers and owners against all claims and demands of any kind whatsoever, which arise out of or in any manner connected with the performance of work referred to herein.

Testing Evaluation Laboratories, Inc.



Vivian K. Wright,
President

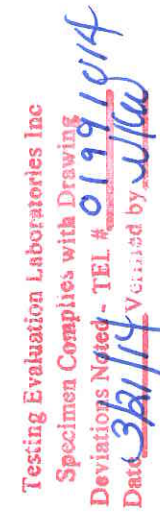
Revision Log

Rev No.	Date	Page(s)	Revision(s)
0	3/21/2014	NA	Original Report Issue

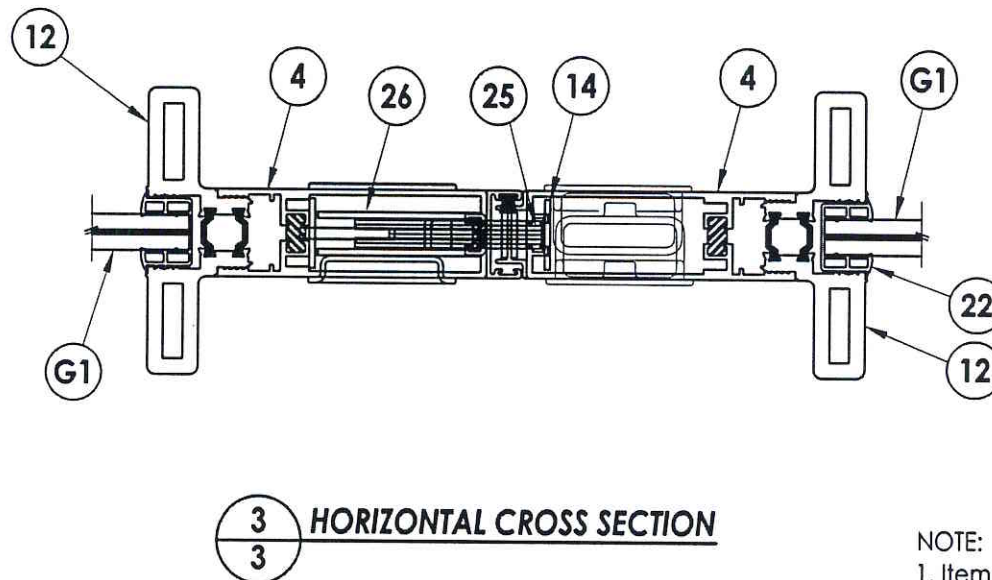
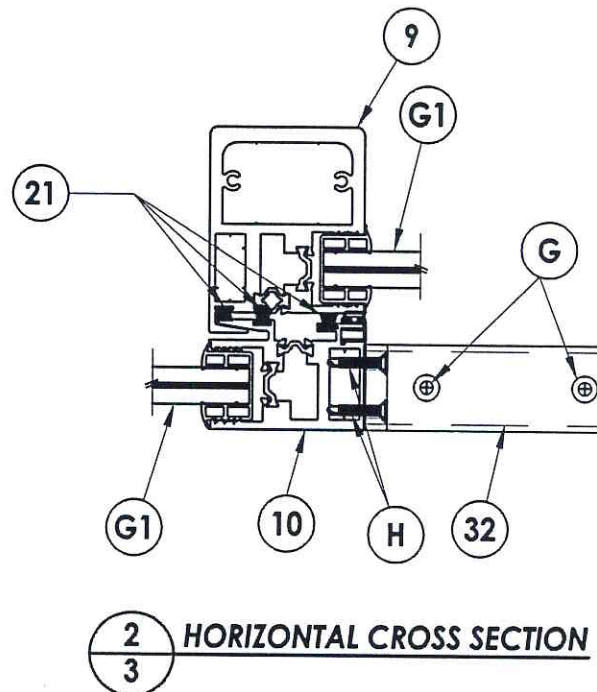
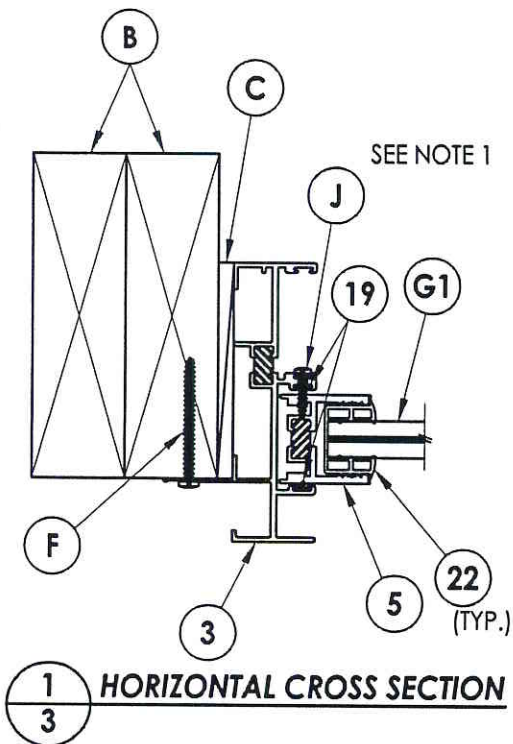
TABLE OF CONTENTS	
SHEET #	DESCRIPTION
1	Table of contents
2	Test elevation
3	Horizontal cross sections
4	Vertical cross sections
5	Sill meeting stile block details
6	Frame anchoring
7	Components
8	Components and glazing detail
9	Bill of materials

Testing Evaluation Laboratories Inc
Specimen Complies with Drawing
Deviations Noted - TEL # 01991014
Date 3/6/14 Verified by WJW

[illegible]



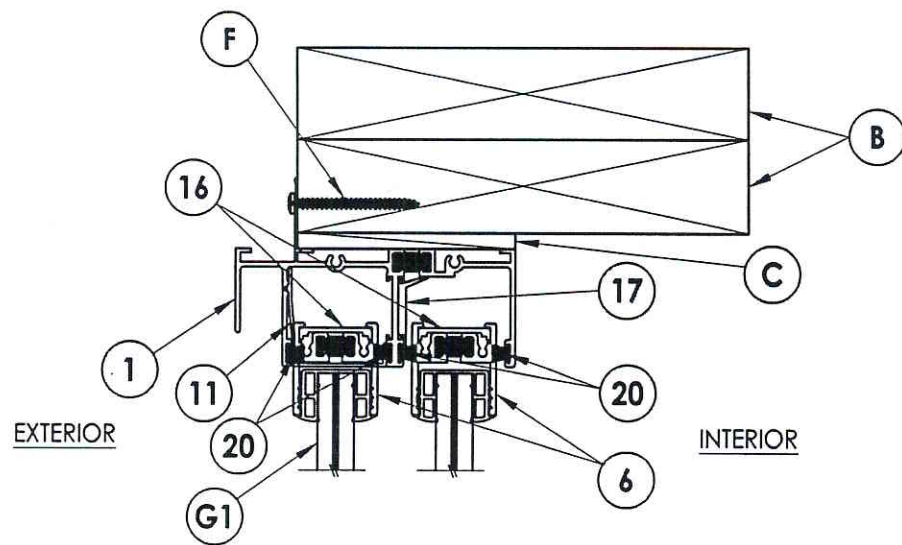
© 2014 R.W. BUILDING CONSULTANTS INC.



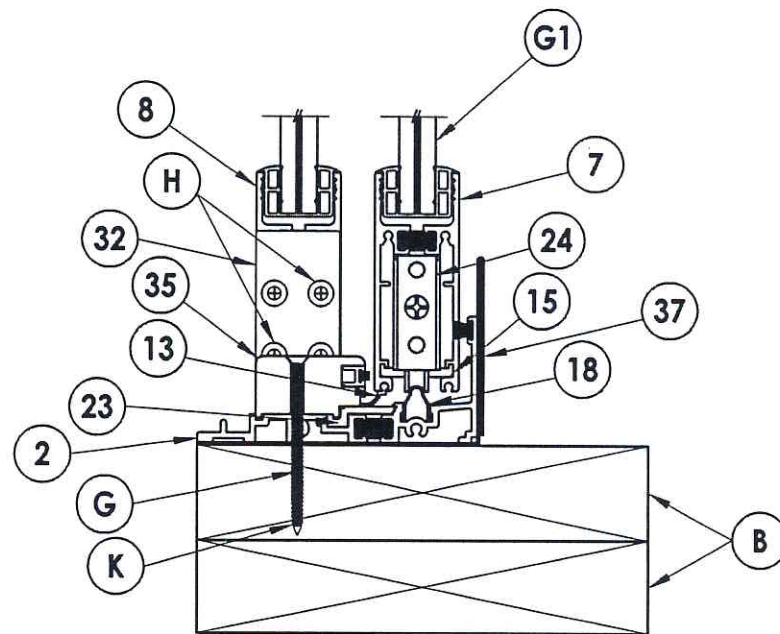
NOTE:
1. Item #J located six inches from each end then 12" o.c.

Testing Evaluation Laboratories Inc
Specimen Complies with Drawing
Deviations Noted: TEL # 0199 1914
Date 3/1/14 Verified by JWC

PRODUCT:		FLEETWOOD GLACIER 3300 (OXXO)	
PART OR ASSEMBLY:		HORIZONTAL CROSS SECTIONS	
NO.	DATE	REVISIONS	BY
<div style="border: 1px solid black; padding: 5px;"> RW BUILDING CONSULTANTS, INC. 813.659.9197 </div>			
DATE: 1/21/14			
SCALE: N.T.S.			
DWG. BY: JK			
CHK. BY: LFS			
DRAWING NO.: L-7113			
SHEET 3 OF 9			



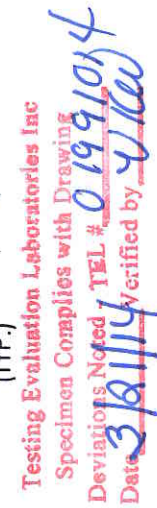
1
4 VERTICAL CROSS SECTION




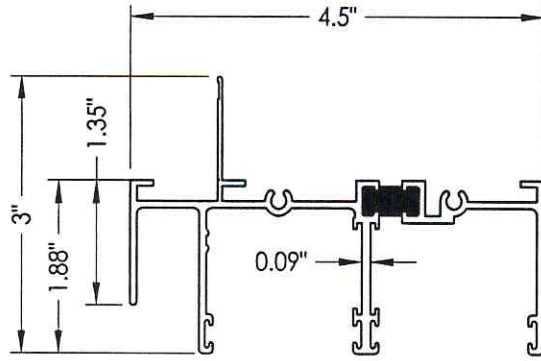
2
4 VERTICAL CROSS SECTION

Testing Evaluation Laboratories Inc.
Specimen Complies with Drawing
Deviations Noted TEL # 0199.1014
Date 3/11/14 Verified by [Signature]

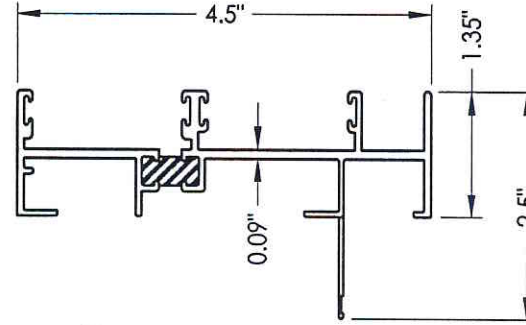
PRODUCT:		FLEETWOOD GLACIER 3300 (OXXO)	
PART OR ASSEMBLY:		VERTICAL CROSS SECTIONS	
NO.	DATE	BY	REVISIONS
<div style="border: 1px solid black; padding: 5px;"> RW BUILDING CONSULTANTS, INC. 813.659.9197 </div>			
DATE: 1/21/14			
SCALE: N.T.S.			
DWG. BY: JK			
CHK. BY: LFS			
DRAWING NO.: L-7113			
SHEET 4 OF 9			



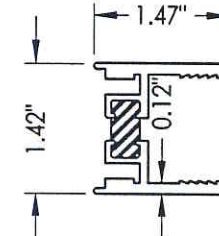
<div style="text-align: center;">  <p>RW BUILDING CONSULTANTS, INC. 813.659.9197</p> </div>							
DATE:		1/21/14					
SCALE:		N.T.S.					
DWG. BY:		JK					
CHK. BY:		LFS					
DRAWING NO.:		L-7113					
SHEET	6	OF	9				



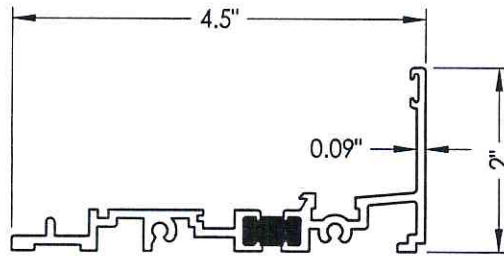
1 HEAD W/ NIAL FIN



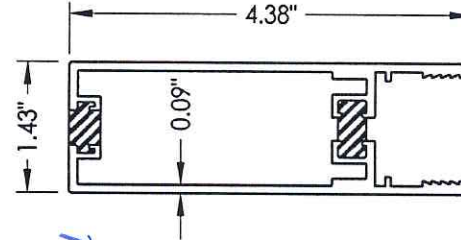
3 JAMB W/ NIAL FIN



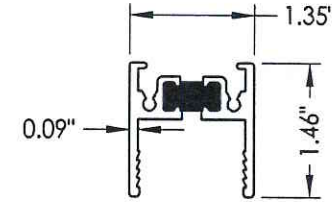
5 FIXED STILE



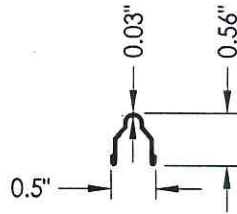
2 SILL



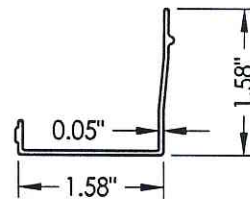
4 LOCK STILE



6 TOP RAIL

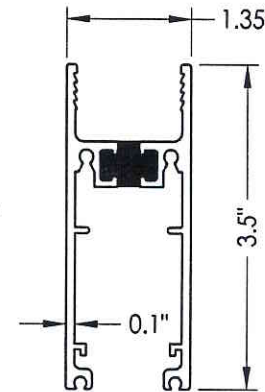


18 TRACK

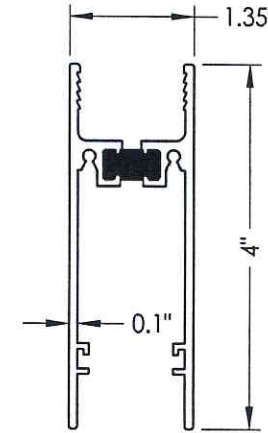


11 HEAD CHANNEL FILLER

Testing Evaluation Laboratories Inc
Specimen Complies with Drawing
Deviations Noted TEL # 0199.1014
Date 3/11/14 verified by JH



7 SLIDING BOTTOM RAIL



8 FIXED BOTTOM RAIL

PRODUCT:		FLEETWOOD GLACIER 3300 (OXXO)	
PART OR ASSEMBLY:		COMPONENTS	
NO.		DATE	
BY		REVISIONS	
DATE: 2/24/14		SCALE: N.T.S.	
DWG. BY: JK		CHK. BY: LFS	
DRAWING NO.: L-7113		SHEET 7 OF 9	



Specimen Complies with Drawing
 Deviations Noted TEL # 01991014
 Date 3/21/14 Verified by WJW

© 2014 R.W. BUILDING CONSULTANTS INC.

BILL OF MATERIALS		
ITEM #	DESCRIPTION	MATERIAL
B	2X BUCK SG >= 0.42	WOOD
C	1/4" MAX. SHIM SPACE	-
F	#10 X 2" PPH SMS	STEEL
G	#10 X 2-1/2" PPH SMS	STEEL
H	#10 X 1" PFH SMS	STEEL
J	#8 X 3/4" PPH SELF-DRILLING SMS	STEEL
K	#10 X 3" PFH WS	STEEL
L	1/4-20 X 1/2" MACHINE SCREW	STEEL
1	HEAD W/ NAIL FIN	6063-T6 ALUM
2	SILL	6063-T6 ALUM
3	JAMB W/ NAIL FIN	6063-T6 ALUM
4	LOCK STILE	6063-T6 ALUM
5	FIXED STILE	6063-T6 ALUM
6	TOP RAIL	6063-T6 ALUM
7	SLIDING BOTTOM RAIL	6063-T6 ALUM
8	FIXED BOTTOM RAIL	6063-T6 ALUM
9	HP INTERLOCK	6063-T6 ALUM
10	FIXED INTERLOCK	6063-T6 ALUM
11	HEAD CLOSER	6063-T6 ALUM
12	HP THERMAL ADAPTOR - DOUBLE WING	6063-T6 ALUM
13	SLIDING BOTTOM RAIL WEATHERSTRIP	-
14	LOCK STILE SPREADER	6063-T6 ALUM
15	BOTTOM RAIL SPREADER	6063-T6 ALUM
16	TOP RAIL ISOLATOR	6063-T6 ALUM
17	ISOLATOR	6063-T6 ALUM
18	S.S. TRACK	SS
19	2 FINGER VINYL	-
20	SMALL FINSEAL	-
21	LARGE FINSEAL	-
22	GLAZING VINYL 1" SCR-900, 80 DUROMETER	-
23	SILL ISOLATOR	6063-T6 ALUM
24	ROLLER ASSEMBLY	6063-T6 ALUM
25	STRIKE PLATE ASSY.(JAMB)	6063-T6 ALUM
26	LATCH ASSY.(JAMB)	6063-T6 ALUM
31	FIXED INTERLOCK BLOCK	6063-T6 ALUM
32	3" X 4" L-BRACKET	6063-T6 ALUM
35	SILL MEETING STILE BLOCK	6063-T6 ALUM
37	SILL PAN	-

Testing Evaluation Laboratories Inc.
Specimen Complies with Drawing
Deviation Noted. TEL # 0199.1014
Date 3/21/14 verified by ykw

[illegible]

TABLE OF CONTENTS	
SHEET #	DESCRIPTION
1	Table of contents
2	Test elevation
3	Horizontal cross sections
4	Vertical cross sections
5	Sill meeting stile block details
6	Frame anchoring
7	Components
8	Components and glazing detail
9	Bill of materials

Testing Evaluation Laboratories Inc

Specimen Complies with Drawing

Deviations Noted - TEL # 0199.1914

Date 3/21/14 Verified by [Signature]



DATE: 2/24/14

SCALE: N.T.S.

DWG. BY: JK

CHK. BY: LFS

DRAWING NO.:

L-7114

SHEET 1 OF 9

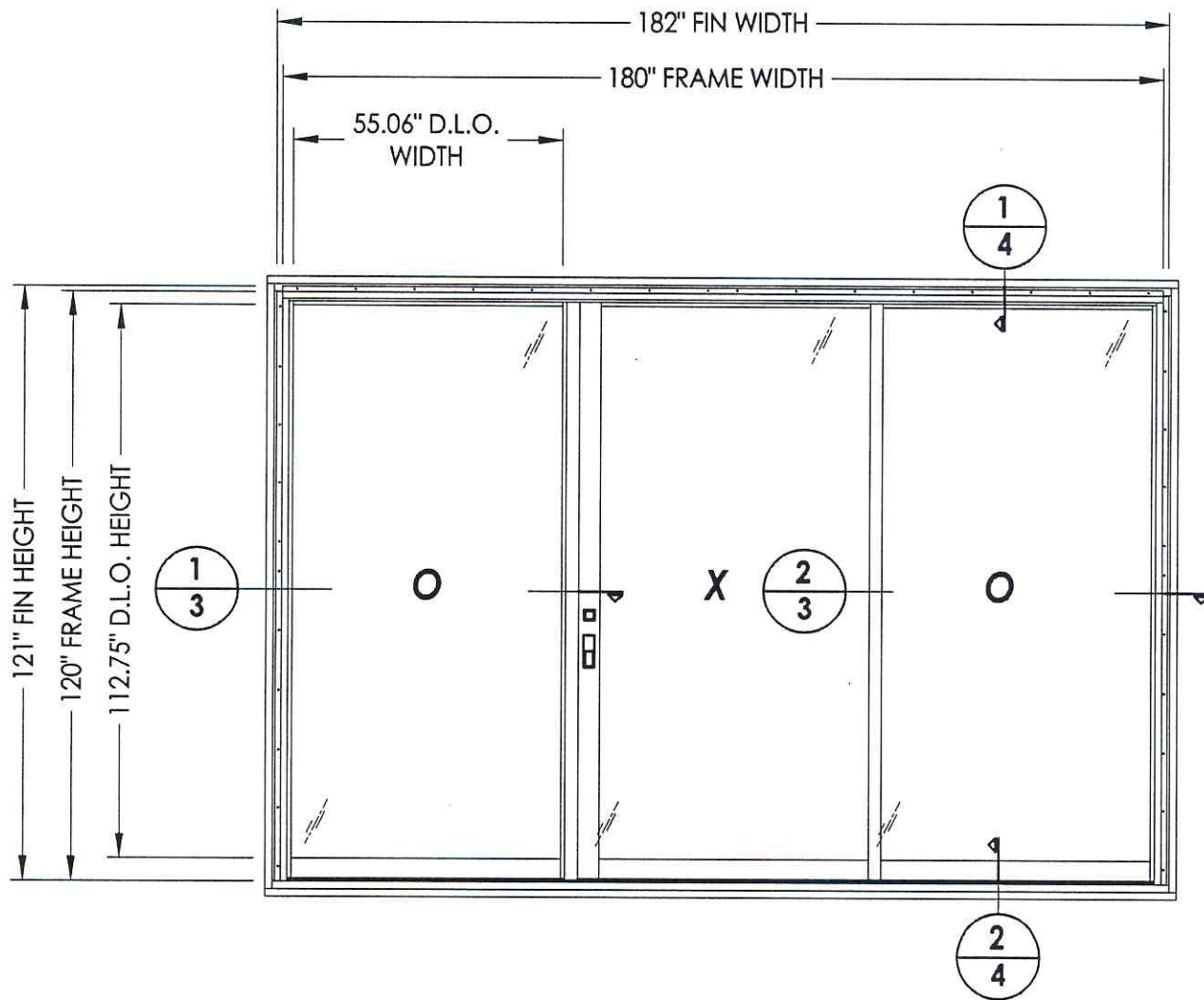
PRODUCT:

FLEETWOOD
GLACIER 3300 (OXO)

PART OR ASSEMBLY:

TABLE OF CONTENTS

NO. DATE BY REVISIONS



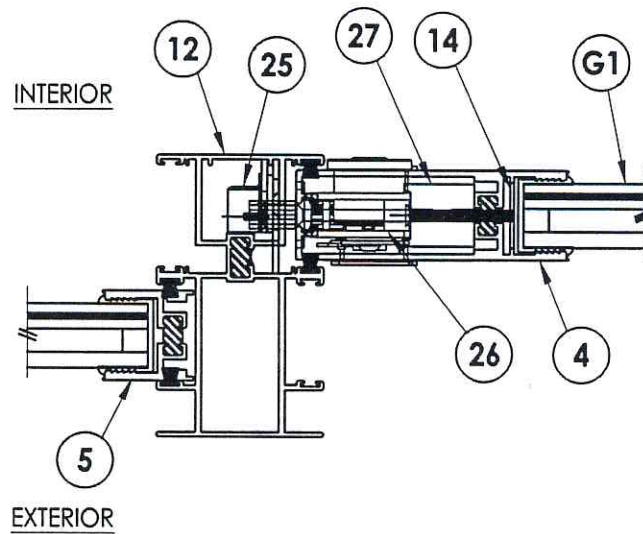
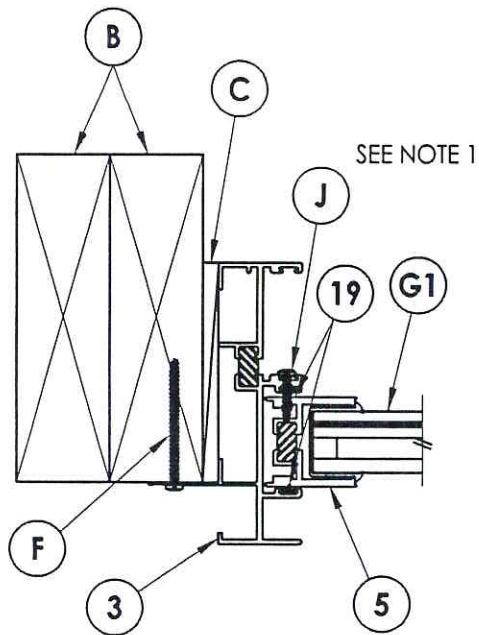
Testing Evaluation Laboratories Inc
Specimen Complies with Drawing

Deviations Noted TEL # 01991014

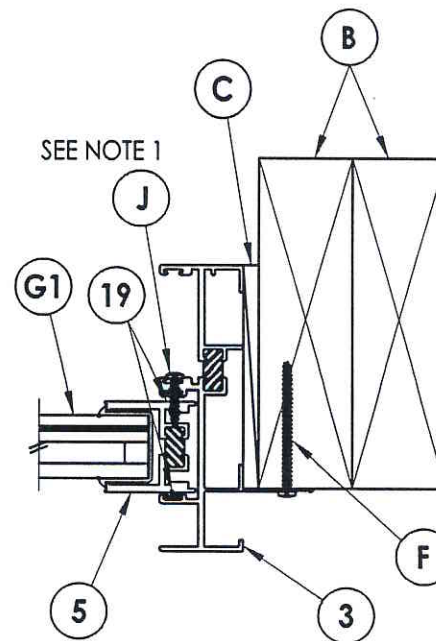
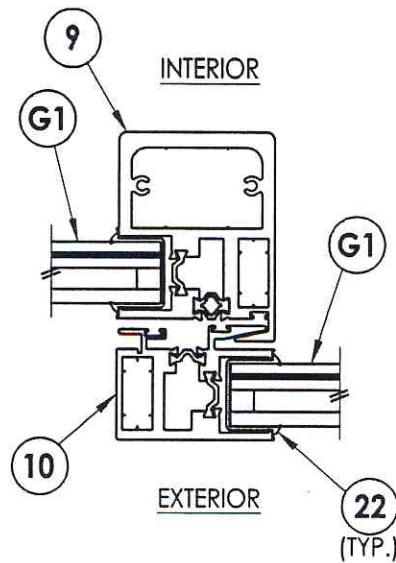
Date 2/21/14 Verified by JFW

PRODUCT: FLEETWOOD GLACIER 3300 (OXO)		PART OR ASSEMBLY: TEST ELEVATION	
DATE: 2/24/14		SCALE: N.T.S.	
DWG. BY: JK		CHK. BY: LFS	
DRAWING NO.: L-7114		SHEET 2 OF 9	
NO.		DATE	
REVISIONS		BY	

RW BUILDING
CONSULTANTS, INC.
813.659.9197



1
3 **HORIZONTAL CROSS SECTION**

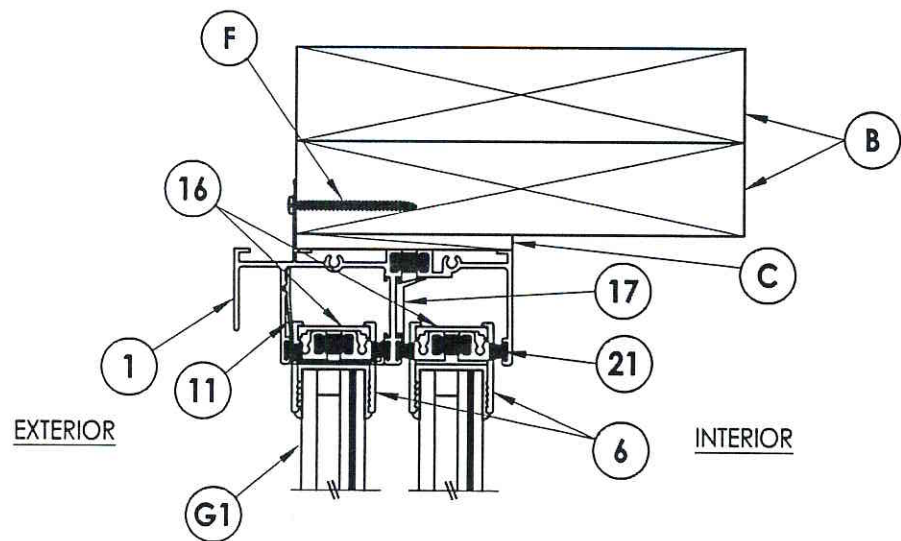


2
3 **HORIZONTAL CROSS SECTION**

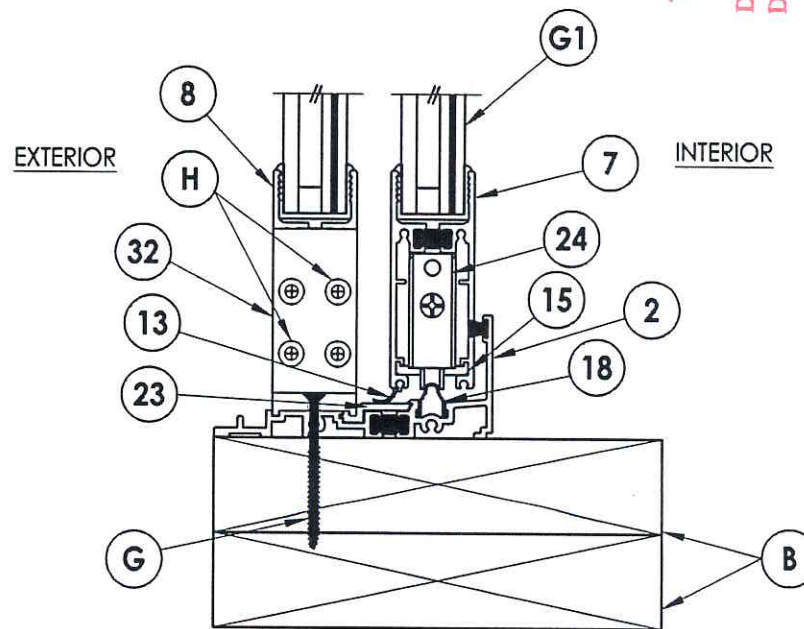
NOTE:
1. Item #J located six inches from each end then 12" o.c.

Testing Evaluation Laboratories Inc
Specimen Complies with Drawing
Deviations Noted - TEL # 0199/014
Date 3/1/14 verified by [signature]

PRODUCT:		FLEETWOOD GLACIER 3300 (OXO)	
PART OR ASSEMBLY:		HORIZONTAL CROSS SECTIONS	
			BY



1
4 VERTICAL CROSS SECTION

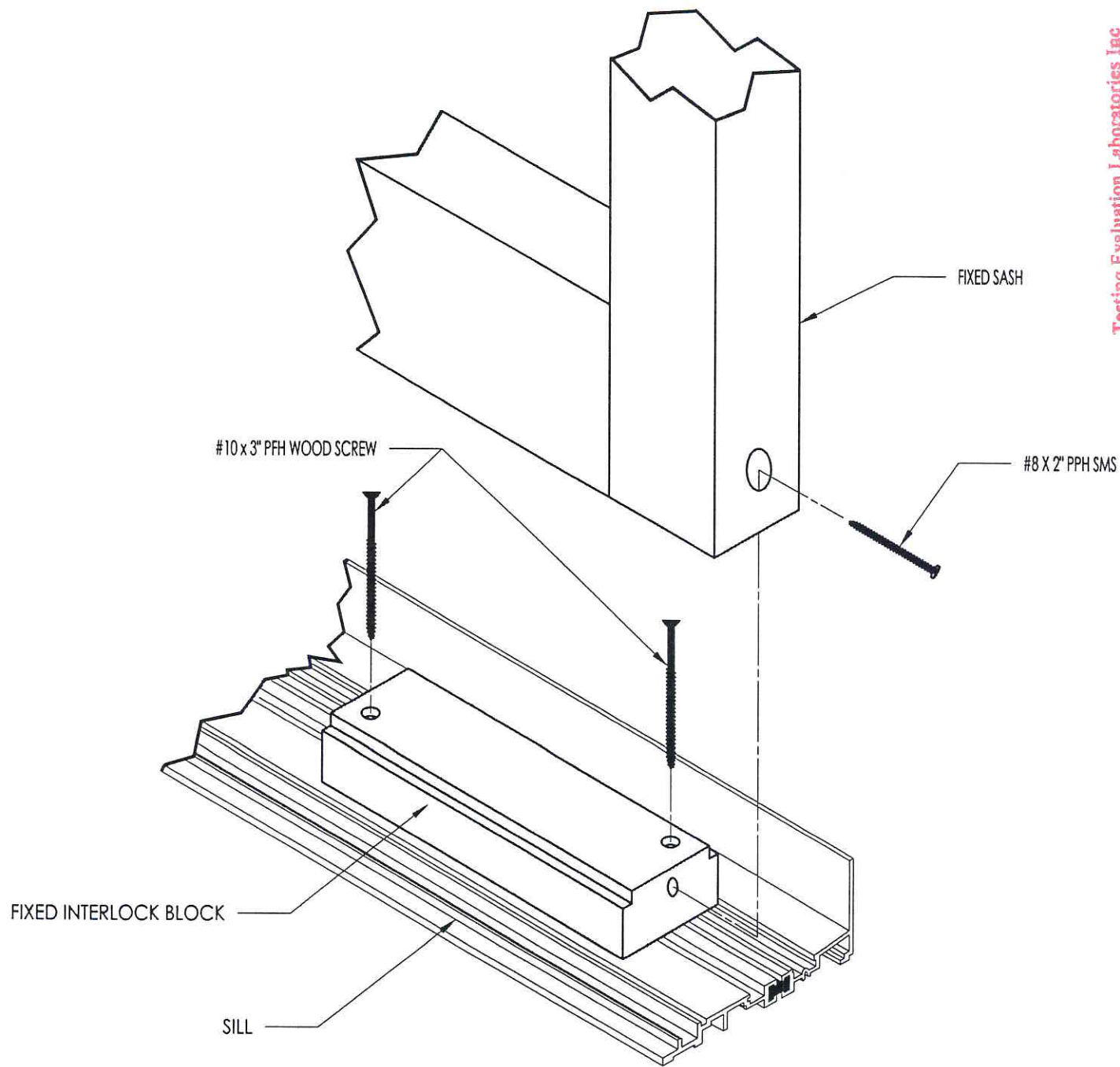


2
4 VERTICAL CROSS SECTION

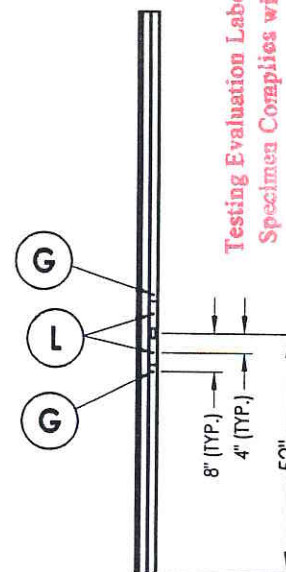
Testing Evaluation Laboratories Inc
Specimen Complies with Drawing
Deviation Noted: TEL # 01991014
Date 3/11/14 certified by [signature]

PRODUCT:		FLEETWOOD GLACIER 3300 (OXO)	
PART OR ASSEMBLY:		VERTICAL CROSS SECTIONS	
NO.	DATE	BY	REVISIONS
<div style="border: 1px solid black; padding: 5px;"> RW BUILDING CONSULTANTS, INC. 813.659.9197 </div>			
DATE: 2/24/14			
SCALE: N.T.S.			
DWG. BY: JK			
CHK. BY: LFS			
DRAWING NO.: L-7114			
SHEET 4 OF 9			

Testing Evaluation Laboratories Inc
 Specimen Complies with Drawing
 Deviations Noted - TEL # 0199 1014
 Date 3/1/14 Verified by *slw*

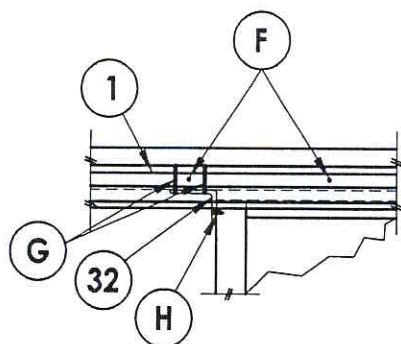


PRODUCT:		FLEETWOOD GLACIER 3300 (OXO)	
PART OR ASSEMBLY:		SILL MEETING STILE BLOCK DETAILS	
NO.	DATE	REVISIONS	BY
<div style="border: 1px solid black; padding: 5px; text-align: center;"> <i>RW</i> BUILDING CONSULTANTS, INC. 813.659.9197 </div>			
DATE: 2/24/14			
SCALE: N.T.S.			
DWG. BY: JK			
CHK. BY: LFS			
DRAWING NO.: L-7114			
SHEET 5 OF 9			

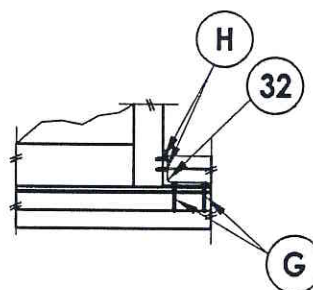


LOCK JAMB

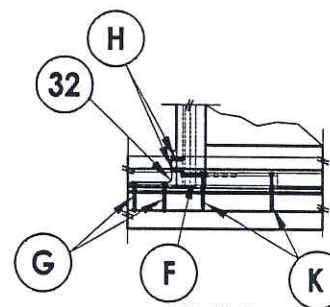
FRAME ANCHORING
2X buck construction



DETAIL 3

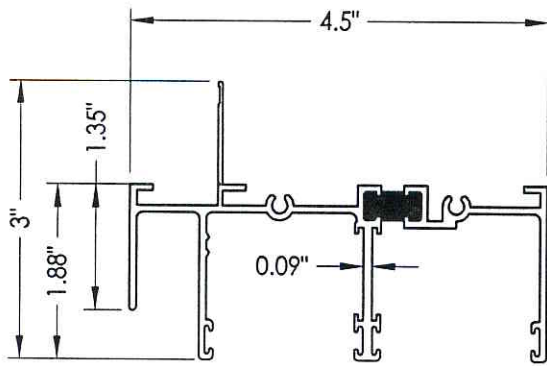


DETAIL 2

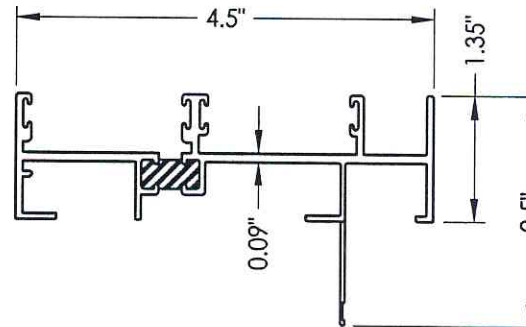


DETAIL 1

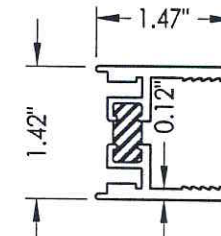
© 2014 R.W. BUILDING CONSULTANTS INC.



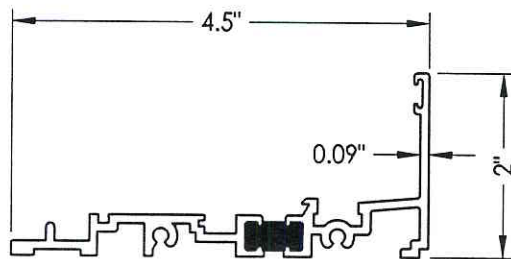
1 HEAD W/ NAIL FIN



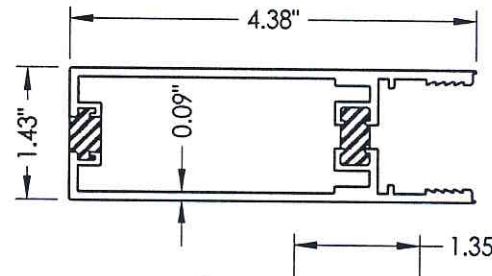
3 JAMB W/ NAIL FIN



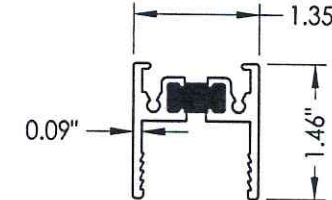
5 FIXED STILE



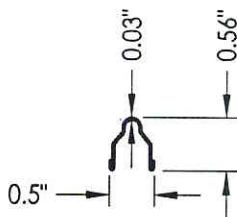
2 SILL



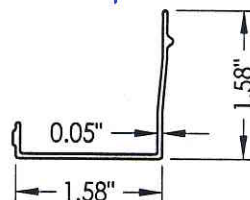
4 LOCK STILE



6 TOP RAIL

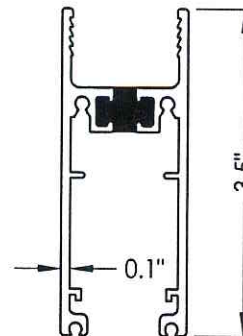


18 TRACK

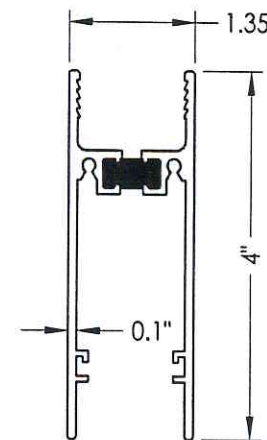


11 HEAD CHANNEL FILLER

Testing Evaluation Laboratories Inc
Specimen Complies with Drawing
Deviations Noted - TEL # 0199/014
Date 3/21/14 Verified by JMW



7 SLIDING BOTTOM RAIL



8 FIXED BOTTOM RAIL

PRODUCT:		FLEETWOOD GLACIER 3300 (OXO)	
PART OR ASSEMBLY:		COMPONENTS	
NO.		DATE	
BY		REVISIONS	
DATE: 2/24/14		SCALE: N.T.S.	
DWG. BY: JK		CHK. BY: LFS	
DRAWING NO.: L-7114		SHEET 7 OF 9	




BILL OF MATERIALS		
ITEM #	DESCRIPTION	MATERIAL
B	2X BUCK SG >= 0.42	WOOD
C	1/4" MAX. SHIM SPACE	-
F	#10 X 2" PPH SMS	STEEL
G	#10 X 2-1/2" PPH SMS	STEEL
H	#10 X 1" PFH SMS	STEEL
J	#8 X 3/4" PPH SELF-DRILLING SMS	STEEL
K	#10 X 3" PFH WS	STEEL
L	1/4-20 - 1/2" MACHINE SCREW	STEEL
1	HEAD W/ NAIL FIN	6063-T6 ALUM
2	SILL	6063-T6 ALUM
3	JAMB W/ NAIL FIN	6063-T6 ALUM
4	LOCK STILE	6063-T6 ALUM
5	FIXED STILE	6063-T6 ALUM
6	TOP RAIL	6063-T6 ALUM
7	SLIDING BOTTOM RAIL	6063-T6 ALUM
8	FIXED BOTTOM RAIL	6063-T6 ALUM
9	HP INTERLOCK	6063-T6 ALUM
10	FIXED INTERLOCK	6063-T6 ALUM
11	HEAD CLOSER	6063-T6 ALUM
12	FALL JAMB	6063-T6 ALUM
13	SLIDING BOTTOM RAIL WEATHER STRIP	-
14	LOCK STILE SPREADER	6063-T6 ALUM
15	BOTTOM RAIL SPREADER	6063-T6 ALUM
16	TOP RAIL ISOLATOR	6063-T6 ALUM
17	ISOLATOR	6063-T6 ALUM
18	S.S. TRACK	SS
19	2 FINGER VINYL	-
20	SMALL FINSEAL	-
21	LARGE FINSEAL	-
22	GLAZING VINYL 1" SCR-900, 80 DUROMETER	-
23	SILL ISOLATOR	6063-T6 ALUM
24	ROLLER ASSEMBLY	-
25	STRIKE PLATE ASSY.(JAMB)	-
26	LATCH ASSY.(JAMB)(Archetype Narrow Latch)	-
27	SPACER (ARCHETYPE NARROW LATCH)	-
32	3" X 4" L-BRACKETT	6063-T6 ALUM

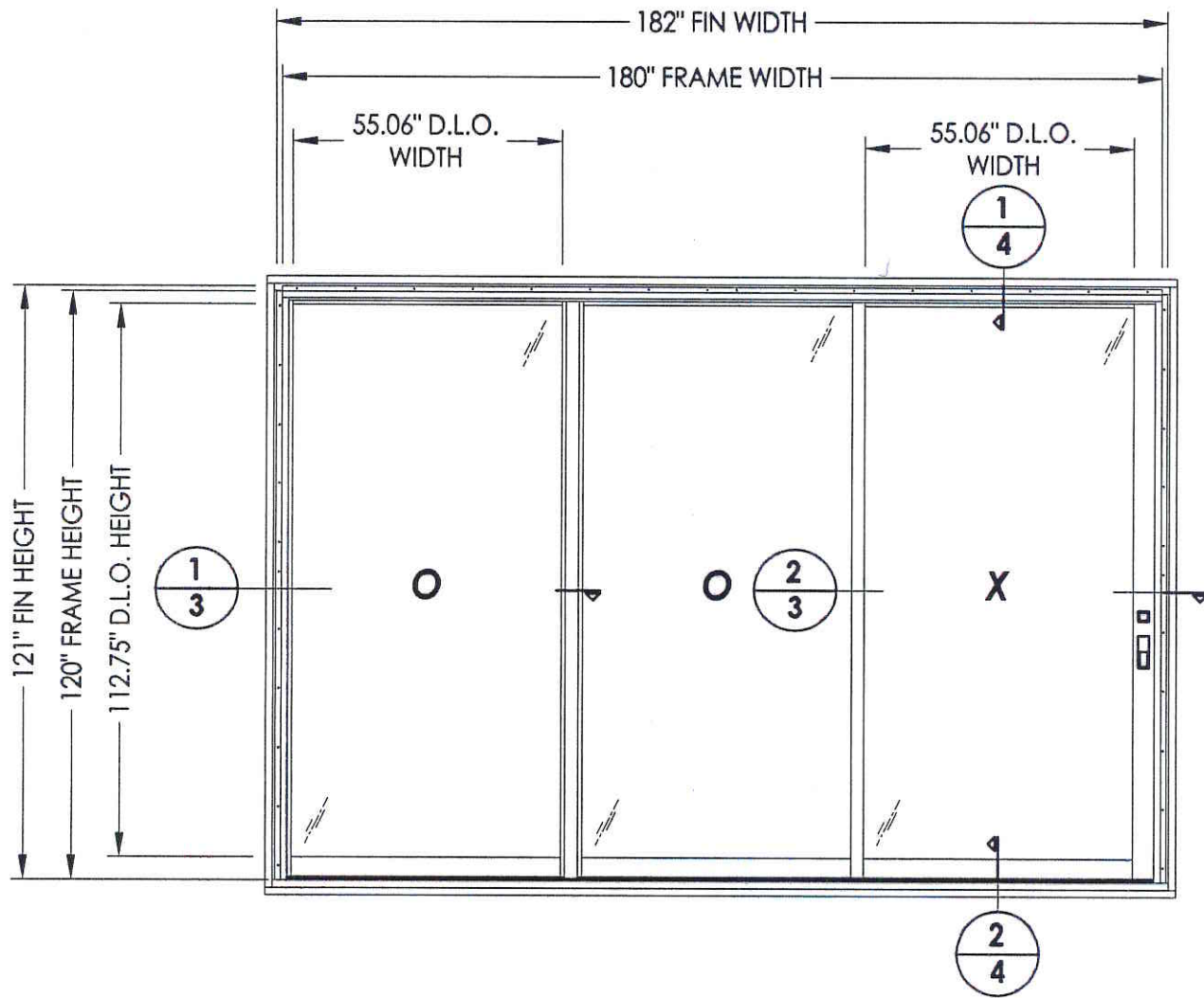
Testing Evaluation Laboratories Inc
Specimen Complies with Drawing
Deviations Noted TEL # 01991014
Date 3/8/14 verified by WDW

[illegible]

TABLE OF CONTENTS	
SHEET #	DESCRIPTION
1	Table of contents
2	Test elevation
3	Horizontal cross sections
4	Vertical cross sections
5	Sill meeting stile block details
6	Frame anchoring
7	Components
8	Components and glazing detail
9	Bill of materials

Testing Evaluation Laboratories Inc
 Specimen Complies with Drawing
 Deviations Noted TEL # 01991014
 Date 3/21/14 verified by ulw

		PRODUCT: FLEETWOOD GLACIER 3300 (00X)	
DATE: 2/24/14 SCALE: N.T.S. DWG. BY: JK CHK. BY: LFS DRAWING NO.: L-7112 SHEET 1 OF 9		PART OR ASSEMBLY: TABLE OF CONTENTS	
NO. DATE BY		REVISIONS	





Testing Evaluation Laboratories Inc
 Specimen Complies with Drawing
 Deviations Noted - TEL # 019910114
 Date 3/21/14 Verified by *[Signature]*

PRODUCT:		FLEETWOOD GLACIER 3300 (OOX)	
PART OR ASSEMBLY:		TEST ELEVATION	
NO.	DATE	REVISIONS	BY
<div style="border: 1px solid black; padding: 5px; text-align: center;"> RW BUILDING CONSULTANTS, INC. 813.659.9197 </div>			
DATE: 2/24/14			
SCALE: N.T.S.			
DWG. BY: JK			
CHK. BY: LFS			
DRAWING NO.: L-7112			
SHEET 2 OF 9			

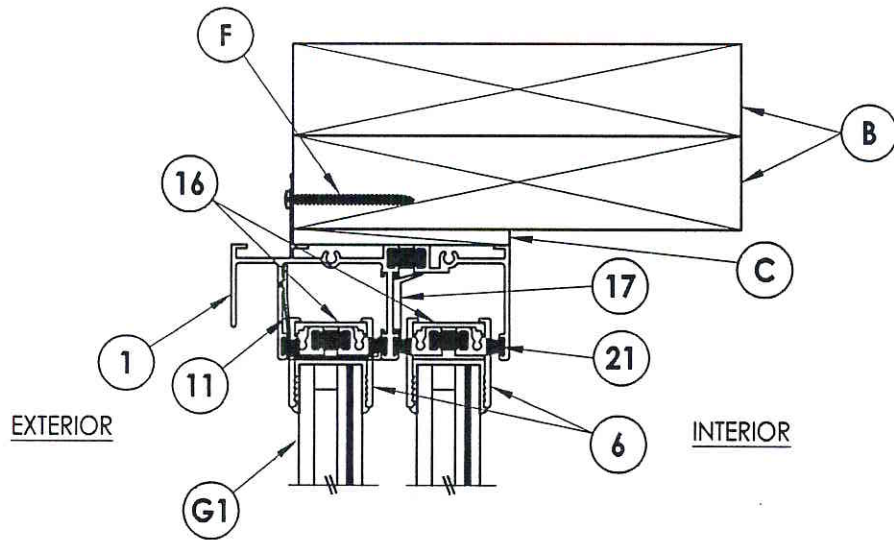


1. Item #J located six inches from each end then 12" o.c.

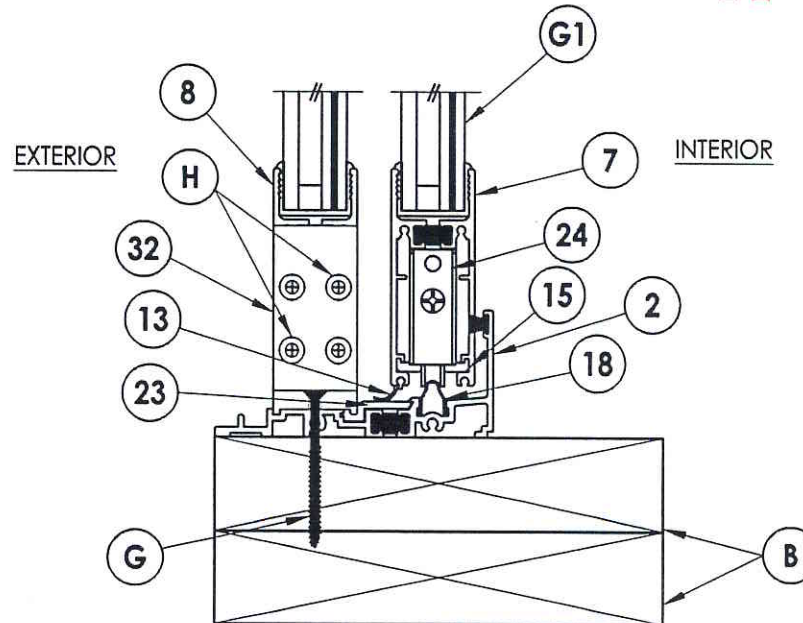


Testing Evaluation Laboratories Inc
Specimen Complies with Drawing
Deviations Noted TEL # 01991014
Date 3/11/14 verified by e/ter

**RW BUILDING
CONSULTANTS, INC.**
813.659.9197



1
4 VERTICAL CROSS SECTION

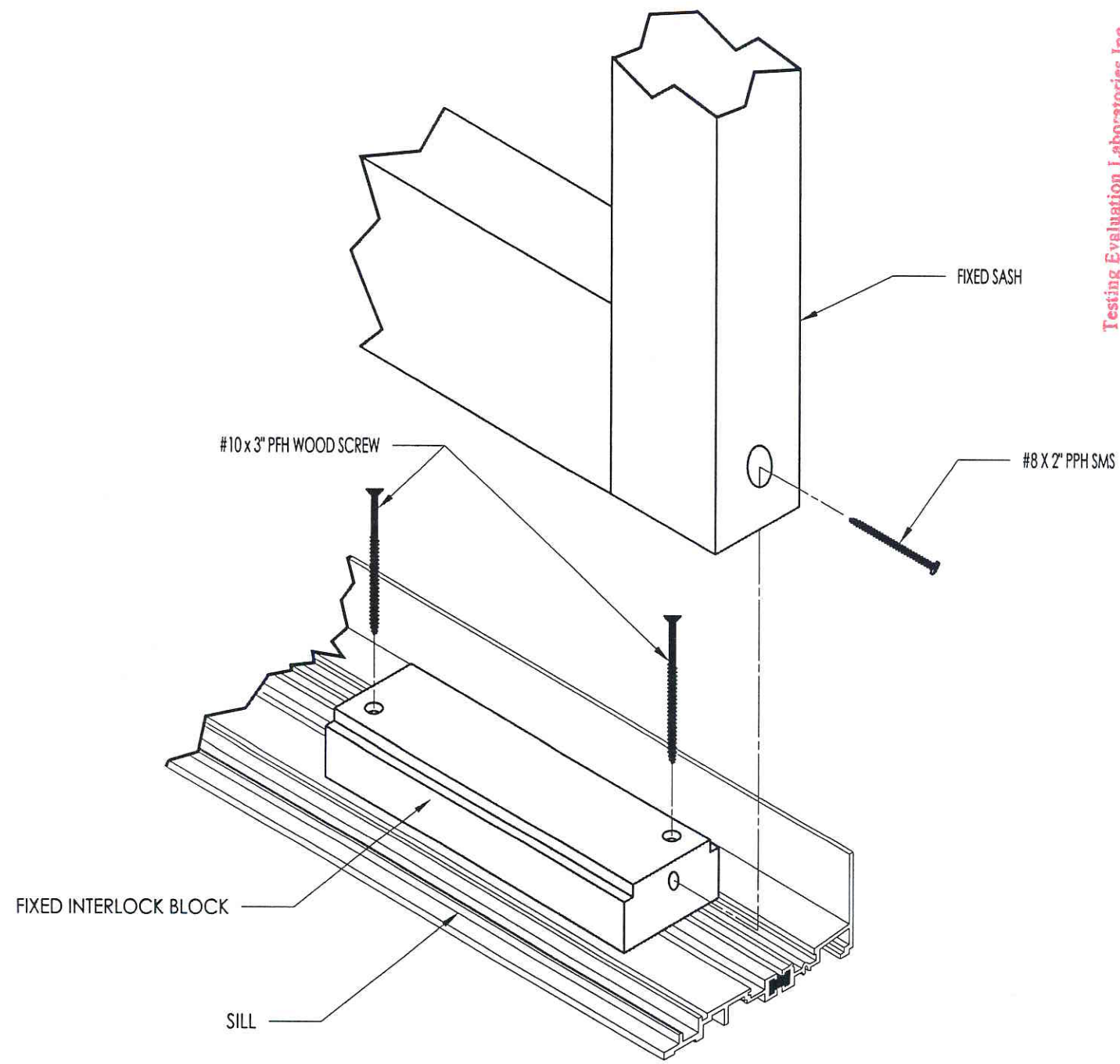


2
4 VERTICAL CROSS SECTION

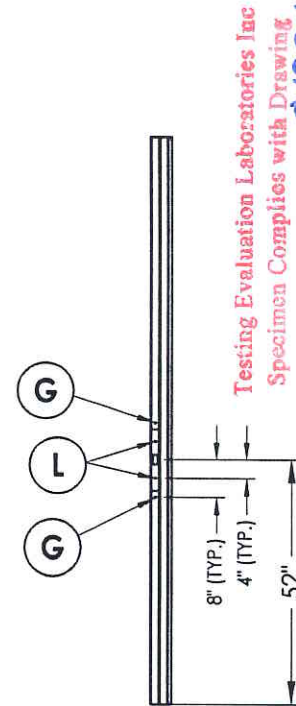
Testing Evaluation Laboratories Inc
Specimen Complies with Drawing
Deviation Noted TEL # 0199 1014
Date 3/21/14 Verified by *[Signature]*

PRODUCT:		FLEETWOOD GLACIER 3300 (OOX)	
PART OR ASSEMBLY:		VERTICAL CROSS SECTIONS	
NO.	DATE	BY	REVISIONS
<div style="border: 1px solid black; padding: 5px;"> RW BUILDING CONSULTANTS, INC. 813.659.9197 </div>			
DATE: 2/24/14			
SCALE: N.T.S.			
DWG. BY: JK			
CHK. BY: LFS			
DRAWING NO.: L-7112			
SHEET 4 OF 9			

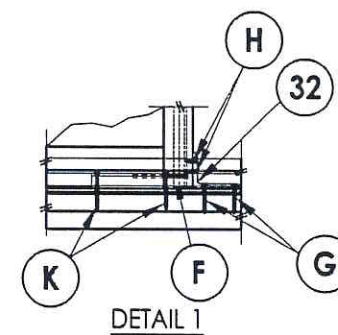
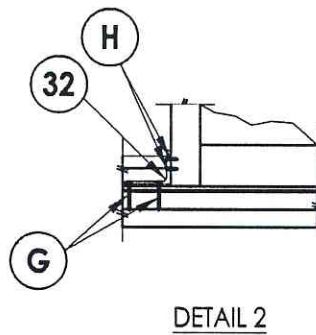
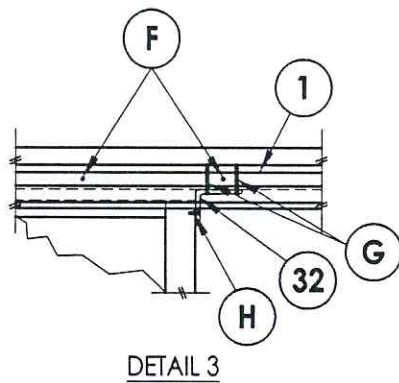
Testing Evaluation Laboratories Inc
 Specimen Complies with Drawing
 Deviations Noted - TEL # 01991014
 Date 3/21/14 Verified by *elc*




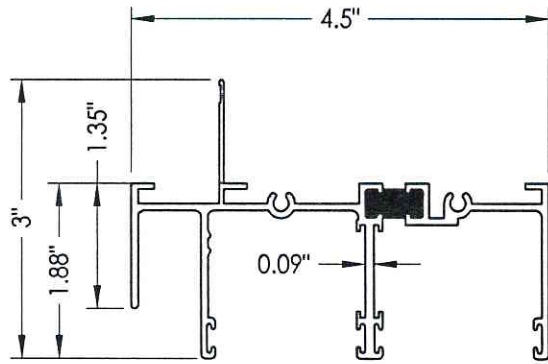
PRODUCT:		FLEETWOOD GLACIER 3300 (OOX)	
PART OR ASSEMBLY:		SILL MEETING STILE BLOCK DETAILS	
NO.	DATE	REVISIONS	BY
<div style="border: 1px solid black; padding: 5px; text-align: center;"> <i>RW</i> BUILDING CONSULTANTS, INC. 813.659.9197 </div>			
DATE: 2/24/14			
SCALE: N.T.S.			
DWG. BY: JK			
CHK. BY: LFS			
DRAWING NO.: L-7112			
SHEET 5 OF 9			



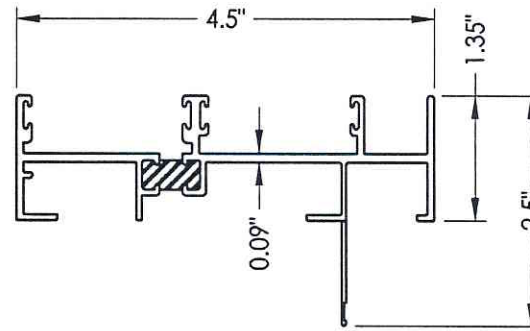
Testing Evaluation Laboratories Inc
Specimen Complies with Drawing
Deviations Noted - TEL # 01991111
Date 3/21/14 verified by JLD



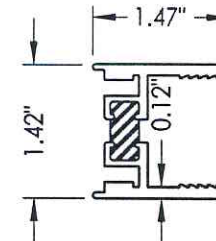
<div style="border: 1px solid black; padding: 5px;">  <div style="display: inline-block; vertical-align: middle;"> BUILDING CONSULTANTS, INC. 813.659.9197 </div> </div>			
DATE: 2/24/14			
SCALE: N.T.S.			
DWG. BY: JK			
CHK. BY: LFS			
DRAWING NO.: L-7112			
SHEET 6 OF 9			



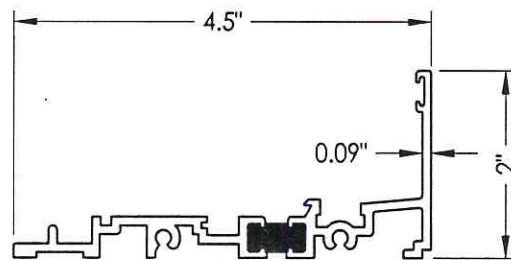
1 HEAD W/ NAIL FIN



3 JAMB W/ NAIL FIN

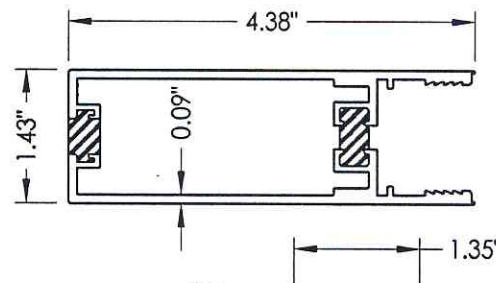


5 FIXED STILE

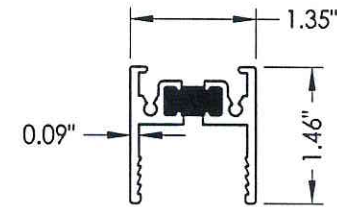


2 SILL

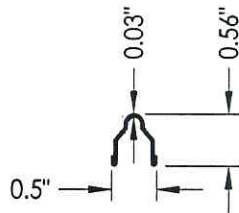
Testing Evaluation Laboratories Inc
Specimen Complies with Drawing
Deviations Noted - TEL # 01991914
Date 3/21/14 Verified by [signature]



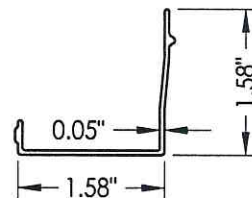
4 LOCK STILE



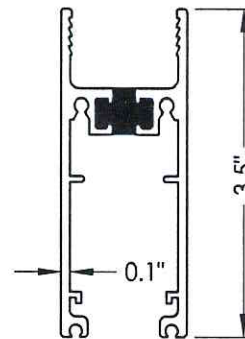
6 TOP RAIL



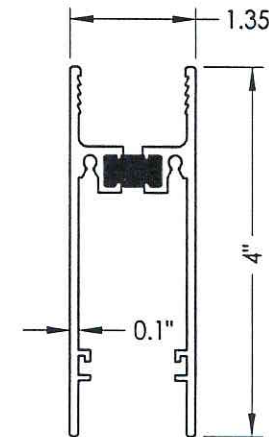
18 TRACK



11 HEAD CHANNEL FILLER



7 SLIDING BOTTOM RAIL



8 FIXED BOTTOM RAIL

PRODUCT:

FLEETWOOD
GLACIER 3300 (OOX)

PART OR ASSEMBLY:

COMPONENTS

NO.	DATE	REVISIONS	BY

RW BUILDING
CONSULTANTS, INC.
813.659.9197

DATE: 2/24/14

SCALE: N.T.S.

DWG. BY: JK

CHK. BY: LFS


DRAWING NO.:

L-7112

SHEET 7 OF 9



Testing Evaluation Laboratories Inc
Specimen Complies with Drawing
Deviation: None - TEL # 0199.1914
Date 3/21/19 certified by JHU

FLEETWOOD GLACIER 3300 (OOX)		PART OR ASSEMBLY:		COMPONENTS AND GLAZING DETAIL	
PRODUCT:		NO.		DATE	
<div style="border: 1px solid black; padding: 5px;">  <div style="display: inline-block; vertical-align: middle;"> BUILDING CONSULTANTS, INC. 813.659.9197 </div> </div>					
DATE: 2/24/14					
SCALE: N.T.S.					
DWG. BY: JK					
CHK. BY: LFS					
DRAWING NO.: L-7112					
SHEET 8 OF 9					

BILL OF MATERIALS

ITEM #	DESCRIPTION	MATERIAL
B	2X BUCK SG >= 0.42	WOOD
C	1/4" MAX. SHIM SPACE	-
F	#10 X 2" PPH SMS	STEEL
G	#10 X 2-1/2" PPH SMS	STEEL
H	#10 X 1" PFH SMS	STEEL
J	#8 X 3/4" PPH SELF-DRILLING SMS	STEEL
K	#10 X 3" PFH WS	STEEL
L	1/4-20 - 1/2" MACHINE SCREW	STEEL
1	HEAD W/ NAIL FIN	6063-T6 ALUM
2	SILL	6063-T6 ALUM
3	JAMB W/ NAIL FIN	6063-T6 ALUM
4	LOCK STILE	6063-T6 ALUM
5	FIXED STILE	6063-T6 ALUM
6	TOP RAIL	6063-T6 ALUM
7	SLIDING BOTTOM RAIL	6063-T6 ALUM
8	FIXED BOTTOM RAIL	6063-T6 ALUM
9	HP INTERLOCK	6063-T6 ALUM
10	FIXED INTERLOCK	6063-T6 ALUM
11	HEAD CLOSER	6063-T6 ALUM
12	FALL JAMB	6063-T6 ALUM
13	SLIDING BOTTOM RAIL WEATHER STRIP	-
14	LOCK STILE SPREADER	6063-T6 ALUM
15	BOTTOM RAIL SPREADER	6063-T6 ALUM
16	TOP RAIL ISOLATOR	6063-T6 ALUM
17	ISOLATOR	6063-T6 ALUM
18	S.S. TRACK	SS
19	2 FINGER VINYL	-
20	SMALL FINSEAL	-
21	LARGE FINSEAL	-
22	GLAZING VINYL 1" SCR-900, 80 DUROMETER	-
23	SILL ISOLATOR	6063-T6 ALUM
24	ROLLER ASSEMBLY	-
25	STRIKE PLATE ASSY.(JAMB)	-
26	LATCH ASSY.(JAMB)	-
32	3" X 4" L-BRACKET	6063-T6 ALUM

Testing Evaluation Laboratories Inc

Specimen Complies with Drawing

Deviations Noted - TEL # 0199.1014

Date 3/21/14 Verified by [Signature]

PRODUCT:

FLEETWOOD
GLACIER 3300 (00X)

PART OR ASSEMBLY:

BILL OF MATERIALS

BY

DATE

NO.

REVISIONS

RW BUILDING
CONSULTANTS, INC.
813.659.9197

DATE: 2/24/14

SCALE: N.T.S.

DWG. BY: JK

CHK. BY: LFS

DRAWING NO.:

L-7112

SHEET 9 OF 9