

THE EDGE OF PERFECTION



Heritage

Founded in Southern California in 1961, Fleetwood Windows & Doors quickly became the trusted choice of dealers, architects, and builders seeking sleek, innovative designs that elevate projects and deliver lasting value. Inspired by the elegance of the Fleetwood Brougham Cadillac, our founders repurposed the name and infused every product with the same spirit of modern luxury, setting a new benchmark for high-end windows and doors.

Rejecting the industry’s trend of cutting corners, Fleetwood engineered proprietary rollers, drainage systems, and hardware for uncompromised quality, cutting-edge performance, and sustainability. This commitment made the Fleetwood name synonymous with celebrity homes and architectural visionaries from the golden age of Modern Architecture and Old Hollywood to today’s era of smart technology and biophilic design.

More than elevating homes, Fleetwood products enable architects and builders to elevate their businesses and leave a meaningful legacy in every project and beyond.



OUR PHILOSOPHY: MADE IN THE USA

Since 1961, Fleetwood has proudly upheld a commitment to American craftsmanship. From the beginning, we’ve employed U.S. workers and sourced materials domestically whenever possible.

Fleetwood’s *Made in the USA* philosophy isn’t just about principles. It’s about delivering what dealers, architects, and builders asked for: fewer compatibility issues, easier installations, shorter lead times, and the confidence that every detail will perform as beautifully as it looks.

With Fleetwood, what you specify is what you get: home-grown, precision-engineered performance that exceeds expectations.



Cover: 1. Anthony Barcelo Photography 2. Travis Rowan Photography | de Reus Architects | Oakes Management, LLC 3. David Papazian Photography | GSW Architects 5. Joe Fletcher Photography | Atelier Jørgensen Architecture 6. Travis Rowan Photography | de Reus Architects Above: Edward Carreon Photography



The Fleetwood Difference

Uncompromising

Fleetwood upholds quality and performance above all else. Professionals and homeowners notice the little things, so we never overlook them. Every component of our product is built by skilled craftspeople, hired for their expertise, not their availability. We have confidence in them and our products, which is why we offer our renowned Transferable Lifetime Warranty.

Innovative

By listening to top professionals, we've set the standard in luxury window and door design, helping our partners push boundaries with confidence. Whether it's security, automation, flawless rolling systems, or functional aesthetic hardware, Fleetwood drives meaningful innovation with solutions that work.

Sustainable

Our windows and doors are made from aluminum, which is 100% recyclable, and one of the most sustainable resources on the planet. Designed for resilience, our products withstand fire, water, and salt corrosion, ensuring homes of distinction endure for generations.



Edward Carreon Photography



THE ONLY TRUE TRANSFERABLE LIFETIME WARRANTY

While most warranties are complex and limited to the first purchaser, Fleetwood's one-page warranty transfers effortlessly to every future owner. This ensures true lifetime coverage and demonstrates the true superiority of Fleetwood products and craftsmanship.



Bespoke

Explore what sets Fleetwood apart. Our bespoke approach delivers unmatched design, performance, and value tailored to every project.



Elite Performance Rollers: The difference you feel.

Our proprietary precision-tuned Swiss-Certified bearings deliver Fleetwood’s signature glide. Velvety smooth and so precise, you can open even the heaviest doors with the push of a finger. Combined with marine-grade stainless steel, ultra-tight machining tolerances, and Fleetwood’s unrivaled quality standards, our luxury rolling systems exceed the performance and durability of every other system on the market.



Proprietary Hardware

Custom hardware, including our Archetype collection, is engineered for minimalist presentation, seamless integration, and flawless function. Explore hardware: (Pages 46-49)

Massive Sizes

Big ideas need big views. We build to the max, for operable and non-operable products, some up to two stories tall. Explore the Generation 4 line: (Pages 18-19)

Custom Shapes

We don’t pull from stock. Every Fleetwood system is individually built to fit your space with architectural precision. Break the mold. Design freely with custom window geometry.

Climate Tested

Fleetwood products undergo rigorous weather testing to ensure long-lasting performance, no matter the climate.

Steel Look

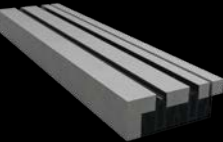
Achieve the timeless look of steel without the cost or complexity. Our aluminum delivers exceptional strength, precision-crafted production, and a durable finish that retains its beauty over time.

Luxury Screens

Sleek extruded frames pair with UltraVue® mesh, delivering unmatched strength, airflow, and crystal-clear views while keeping nature out. For easy operation, we also offer magnetic strikes and hinged screen options.

Discreet Weep Slots

Fleetwood designed rectangular weep slots that transform essential functionality into minimalist elegance.



Seamless Drainage Solutions

Fleetwood’s proprietary Arche-Duct system provides additional weather support with a flush threshold. It not only captures water runoff but also directs it away from the home, protecting the foundation. Explore sliding door sills: (Page 50)

Coastal Durability

Aluminum’s natural oxide coating makes our products corrosion-resistant, even to salt air and water exposure. When finished with anodizing or high-performance paint, it thrives in harsh coastal environments with minimal maintenance.

Thermal Energy Performance

Select Fleetwood products feature advanced thermal breaks that dramatically reduce heat and cold transfer, delivering superior energy efficiency without compromising strength or style.

Material Integrity

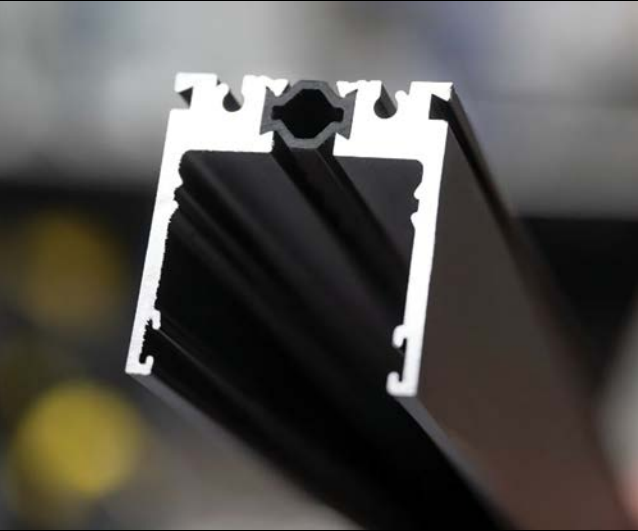
Our extrusions are made from thicker aluminum than competitors’, delivering superior strength, durability, and performance. Pound for pound, Fleetwood offers unmatched value.



Travis Rowan Photography | Kasprzycki Designs | Imagine-It Builders



Berlyn Photography



Edward Carreon Photography

EDGE Collection	10
EDGE p	12
EDGE s	14
EDGE f	16
Generation 4	18
Series 4400-T / 4400 Wood	20
Series 4070-T	22
Series 450-T	24
3-Series	26
Series 3070 / 3070-T	28
Series 3050	30
Series 3000 / 3000-T	32
Series 3900-T	34
Series 3200-T	36
Series 3600-T	38
Series 3800-T	40
Series 350-T	42
Series 330-T	44
Door Hardware	46
Window Hardware	48
Sliding Door Sills	50
Finishes	52
Resources	54

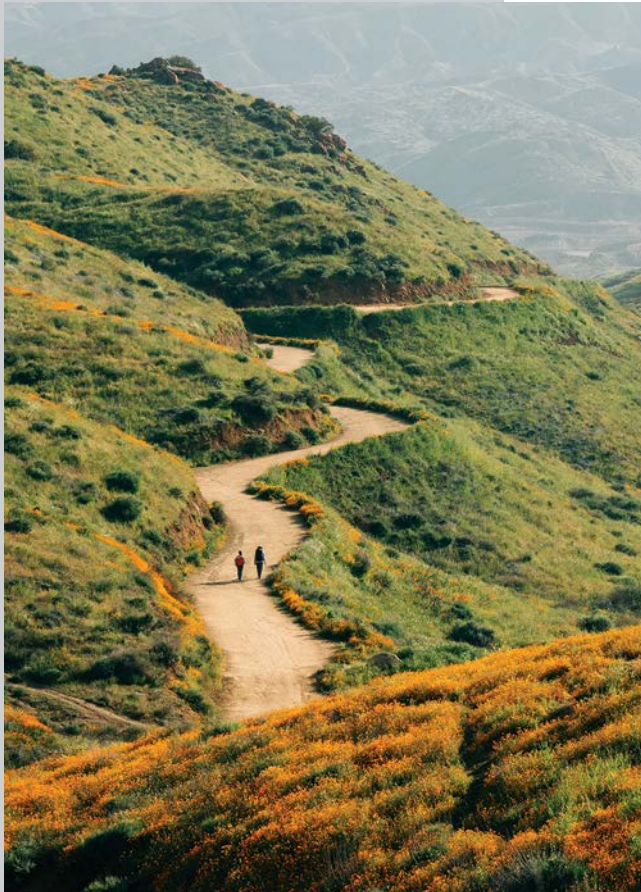


Taj Howe Photography | Heliotrope Architects | Tye Contracting



EDGE Collection

Designed for the purest expression of modern architecture, the EDGE Collection features our most minimal designs, perfect for projects that demand zero visual interruption. With buried frames and 1-inch sightlines, each product disappears into its environment, delivering unmatched elegance and precision. Innovative sub-floor hardware and drainage systems are concealed beneath the surface, enabling the thinnest profiles on the market. Crafted with advanced engineering and exclusive luxury hardware, the EDGE Collection sets the standard for clean design, smooth operation, and hidden performance.



Jonathan Prewitt Photography | Murdock Architecture



Jonathan Prewitt Photography | Murdock Architecture

EDGE's innovative design, particularly its thin sightlines and massive panel sizes, perfectly complements the goal of maximizing natural light and unobstructed views.

BEN BALLENTINE,
BALLENTINE ARCHITECTS,
CALIFORNIA



Design without limits. Choose
EDGE |p| for minimalist beauty
and cutting-edge functionality.

Barely there, yet powerfully present. Fleetwood's EDGE |p| pivot door combines effortless touch operation, discreet design, and modern smart home technology.

Electronic V-Locks offer secure smart entry via phone, keypad, biometrics, or remote.

Robust Rixson floor closer provides a fluid pivot with optional hold-open functionality.

Minimal top and bottom rails under 1¾" preserve the door's sleek aesthetic.

Zero-edge jamb design integrates with wall finishes through the glass line.

The Arche-Duct drainage system enables a finished floor sill for redirecting moisture, no compromises.





↔ Max Panel Width: 10' ↑ Max Frame Height: 15' ⚙ Example U-Factor: NFRC: 0.31

CS8 Photography | McClean Design



Jonathan Prewitt Photography | Murdock Architecture



Jonathan Prewitt Photography | Murdock Architecture

Maximizing daylight and expansive vistas, the EDGE |s| sliding door defines Fleetwood's iconic thin-line aesthetic.

Durable stainless-steel, shoot-bolt locks deliver lasting strength and security.

Optional magnetic locks are automation-ready and enable smart access systems.

Flow-through walls at both jambs and barely-there, 1" vertical sightlines regardless of configuration.

The Arche-Duct drainage system provides best-in-class weather protection while maintaining a continuous transition at the sill.

Proprietary A4-E Swiss-Certified precision bearings deliver Fleetwood's signature glide, while floor-mounted, removable wheels simplify maintenance and allow for a subtle bottom rail.



Set your work apart.
Step up to the edge with
the EDGE |s|.

Fixed Window
EDGE | f |



Stephen Morgan Photography | H&S International LLC



Stephen Morgan Photography | H&S International LLC

Invisible frames. Minimal presence. A design that lets the landscape take center stage.

100% buried frames align seamlessly with the floor, ceiling, and walls to create a flow-through experience.

Arche-Duct draining system delivers exceptional high-rise water management, with three discreet frame options to meet water and structural needs.

Side lite integration with EDGE door products creates continuity and seamless blending with the EDGE Collection's signature 'zero-edge' aesthetic.

Boutique structural fin option enhances wind-load resilience, elevating stability with subtle sophistication.



Frame your vision, not your window. EDGE |f| for seamless, modern design.



Stephen Morgan Photography | H&S International LLC



Generation 4

Gen4 was engineered to celebrate scale without compromise. Designed specifically for massive glass sizes, this premier line pushes architectural boundaries while preserving Fleetwood’s exceptional thermal performance. Every product in this collection is thermally broken for superior energy efficiency and tailored to accommodate high-performance glazing for extreme applications. From boutique hardware to flush transitions, every detail has been refined to elevate modern luxury to a grand scale.



“We consider Fleetwood a key component to the conceptual vision of the project and an integral partner to our project's success. You combine that with their exceptional quality, and you can see why we have been working with them now for over two decades.

DEAN LARKIN, DEAN LARKIN
DESIGN, CALIFORNIA



ProVisuals Media | Architect Craig Wickersham | GEF Development

Pivot Door
Series 4400-T

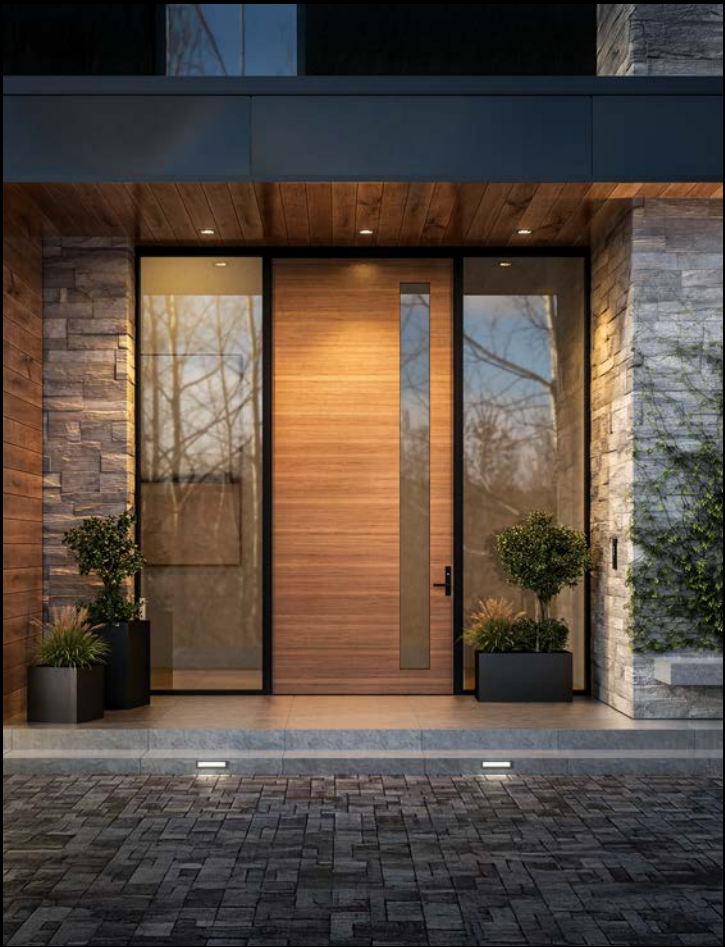


Make an entrance with the 4400-T pivot door. Massive glass, bold design.



Adam Potts Photography | Shawback Design | Griggs Custom Homes, Inc.

↔ Max Panel Width: 13'4" ↑ Max Frame Height: 15' 🌀 Example U-Factor: NFRC: 0.34



Blending artisan detail with scale and fortitude. Whether wood or glass as your canvas, this door defines your entryway with timeless, natural style.

Patented Archetype locking system pairs with any architectural pull for a sophisticated finish.

Optional multi-point locking systems, for additional security, are manually or electronically controlled, paired with luxury FSB handles.

Arche-Duct flush sill ensures discreet transitions with reliable residential water performance.

4400 Wood Pivot
Crafted solely from real wood panels, never imitations or veneers, this sister product is built for a clientele that accepts nothing less than the ultimate in authenticity, security, and privacy. Available in over 50 custom variations, seven rich wood species, and eight modern designs.



Explore 4400 Wood custom designs.



Anthony Bareilo Photography

Multi-Slide & Pocket Door
Series 4070-T



Jee Bryant Photography

↔ Max Panel Width: 12' ⬆ Max Frame Height: 20' 🌀 Example U-Factor: NFRC: 0.29



Roehner + Ryan | Koss design+build

With the capacity for 20-foot tall panels, the 4070-T transforms glass into architecture, delivering two-story sliding doors with the efficiency of thermal-break engineering.

Massive panel support accommodates up to 120 sq. ft. and 1,400 lbs. while maintaining slim 2½" sightlines and a 3¼" bottom rail.

Flush inlaid sill options offer refined floor transitions with concealed sub-floor water management.

Proprietary A4 Quad Swiss-Certified rollers provide soft and precise movement even for 20-foot panels.

Boutique locking options include the patented Archetype Narrow system in black or brushed stainless, with an optional magnetic lock.



Jason O'Rear Photography | Butler Armsden Architects | Fontana Construction Inc.



Slide into grandeur with the 4070-T, where scale meets sophistication.

Window | Casement • Awning • Hopper • Fixed

Series 450-T

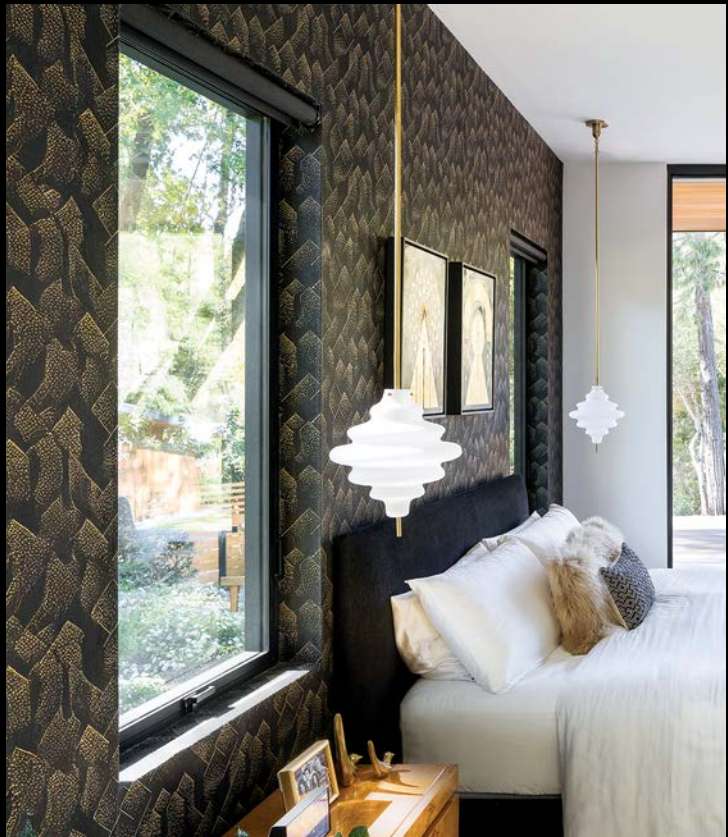


↔ Max Panel Square Footage: Casement, Awning, & Hopper: 24 ft² • Fixed: Determined by Site Wind Loads
+ Partner Products: Series 3800-T Fixed System 🌀 Example U-Factor: NFRC: 0.21 (Casement) / 0.15 (Fixed)

David Papasian Photography | OSW Architects



Think big with the 450-T.
Windows that make a statement.



Adam Potts Photography | Knock Architecture & Design | Eames Construction

Crisp and purposeful, the 450-T window collection of casements, awnings, fixed, and hoppers deliver curated details and energy-conscious innovation woven into every line.

Slim wall-to-glass dimension for operable windows of just 2-9/16" delivers a minimalist aesthetic.

Advanced thermal design enhances energy efficiency and meets the strictest code requirements in North America.

Contemporary nested rotogear operates discreetly, allowing casement and awning windows to deliver both effortless function and simplicity.

Premium hardware includes marine-grade stainless steel Archetype hardware, including the Cam Handle, Multi-Point Latch, and High Performance Butt Hinges.

Boutique cube design features a precise 3/16" shadow line on both interior and exterior faces, which hides weep slots from view.



Joe Fletcher Photography | Fuse Architects | Hagen Colbert, Inc.



3-Series

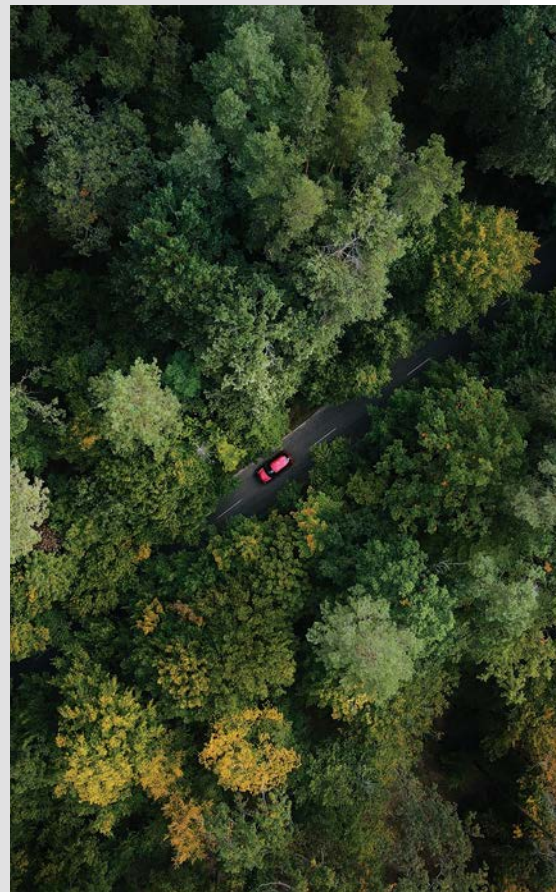
As our most comprehensive and adaptable collection, the 3-Series balances design flexibility with performance. With options for thermal and non-thermal applications, this line accommodates both traditional and modern aesthetics while maintaining slim sightlines and buried frame options for a refined finish. The 3-Series offers a wide range of operation types, including sliding, hinged, folding, casement, awning, hopper, and fixed, making it ideal for high-end residential or commercial projects with diverse requirements. A broad selection of performance upgrades and customizations, including extreme-weather and HVHZ solutions, support tailored designs for any architectural vision.



Adam Potts Photography | Quezada Architecture

“We like to deal with local sources. We like to work with US products made in the USA. We like to work with local distributors that install and back up their installation... We would use Fleetwood products anywhere in the country.”

LOU DESROSIERS,
DESROSIERS ARCHITECTS,
MICHIGAN



Joe Fletcher Photography | Faulkner Architects | Glenwood Mountain Homes

Multi-Slide & Pocket Door
Series 3070 | 3070-T



With high-performance options and custom components, every transition becomes fluid with this pocketing multi-slide, so indoor-outdoor life moves in harmony.

Low-profile $\frac{3}{4}$ " sill is the industry's lowest profile performing threshold and available with a flush Arche-Duct drainage system with hurricane-grade stability.

The patented Archetype Narrow Lock, crafted from marine-grade stainless steel, provides strength with a sleek, trim profile.

Thermal option (3070-T) enhances energy conservation in cold climates.

Proprietary A2 Tandem Swiss-Certified rollers employ bearing technology that transforms operation into an architectural experience.

Boutique design options include 1" interlockers, no-post corners, patented Archetype lock stile, exterior keyed entry, and magnetic locks.



Bring your vision to life with the 3070. Limitless customization at your fingertips.



Berlyn Photography | Landry Design Group



Andrew Bramasco | Subrakt Studio | C. H. Anderson Construction

Multi-Slide & Pocket Door
Series 3050



↔ Max Panel Width: 10' ↑ Max Frame Height: 18' ⚙ Example U-Factor: NFRC: 0.47

CS8 Photography



Roeheer + Ryan | Identity Construction



CS8 Photography



Turn ordinary spaces into extraordinary moments with the 3050.

The 3050 redefines design freedom with vast curves, hidden tracks, and unlimited panel widths, now with optional drainage.

Archetype locking stiles are offered in marine-grade, brushed stainless steel, or black painted finishes, with optional magnetic electronic locks.

Flow-through hidden sill design offers the ultimate indoor-outdoor transition with staggered tracks and finished flooring when weather protection is unnecessary.

Proprietary A2 Tandem Swiss-Certified rollers create a sense of balance and control, turning every movement into an experience of weightless precision.

Optional subfloor Arche-Duct drainage is weather-tested for reliable clean transitions.

Boutique design options include interior hidden tracks, custom curves with radius as tight as 12', and limitless opening widths.

Sliding Door
Series 3000 | 3000-T



Series 3000 (Series 3000-T) ↔ Max Panel Width: 7' (6') ↑ Max Frame Height: 14' (12') ⓘ Example U-Factor: NFRC: 0.47 (0.36)

Berlyn Photography



Travis Rowan Photography

Engineered for modern simplicity, the 3000 traditional, two-panel slider integrates near-invisible screens, thermal options, and premium upgrades for a door that quietly elevates any space.

Extruded aluminum screens with UltraVue® 2 mesh by Phifer Inc., offer near-invisible clarity and magnetic strikes.

Three sill options, 1¼", 2", and 3", pair with coastal-friendly, stainless-steel track and roller system to safeguard against the elements.

Thermal option (3000-T) increases energy efficiency for cold-climate resilience.

Boutique options include standard Archetype Narrow locking stile, with Archetype Wide as an option, plus 1" interlockers, high-performance mulling, and magnetic locks.



From custom options to perfect combinations, experience the 3000 sliding door.



Travis Rowan Photography | Pitzer Built



Rob Jordan Photography

↔ Max Panel Width: 4'6" ↑ Max Frame Height: 12' ☼ Example U-Factor: NFRC: 0.38



Roehner + Ryan | The Ranch Mine | Identity Construction

Sleek security meets seamless design with luxury handles, integrated combinations, and unique customization like keyless entry and hopper window inserts.

Uncompromising security and luxury hardware is standard with the contemporary design of FSB stainless steel levers and a robust 5-point locking system.

Multiple integration options allow seamless combinations with other Fleetwood products, integrated fixed side lites and transoms.

Optional Arche-Duct sill creates a subtle, indoor-outdoor threshold, with subfloor water drainage.

Boutique options include electronic 3-point keyless entry locking system and hopper window inserts for easy ventilation.



Berlyn Photography



Where strength meets flexibility.
Choose the versatile 3900-T
for your next project.

Narrow Style Hinged Door
Series 3200-T



Adam Potts Photography | Skornicka Designs & Construction, Inc. | Michael Mitchell Architectural Design & Drafting



Practical(y) Studios | Dick Clark Architects | Battaglia Fine Homes



Refined by design, the 3200-T delivers elegant lines, flush-sills, and drainage options.

Minimalist panel profiles complement buried jamb and sill designs for sightlines under 4".

Secure 3-point locking system paired with luxury FSB lever options complete the polished elegance of this swing door.

Optional Arche-Duct sill delivers a refined indoor-outdoor transition, with peace-of-mind water management.

Boutique options include beveled "Steel Look" divided lites and a WiFi-enabled smart lock.



Open the door to sophistication with the 3200-T.

Folding Door
Series 3600-T



↔ Max Panel Width: 3'6" ↑ Max Frame Height: 12' Example U-Factor: NFRC: 0.34

JBR Life Media



Berlyn Photography

Engineered for coastal durability and high-wind environments, the 3600-T folding system can be tailored to include options like integrated swing doors and no-post corners.

Salt-resistant hardware includes dual-point lock, carriers, hinges, and all locking components in stainless steel.

Brio carriers with side-thrust bearings ensure quiet, stable operation.

Integrated hinged doors available with matching levers for a cohesive system.

Boutique options include countertop pass-through windows and no-post, 90-degree corner configurations.



Timeless elegance, modern functionality, and panoramic views. Discover the 3600-T folding door.



Joe Bryant Photography | Tomaro Architecture

Window Wall System
Series 3800-T



The 3800-T window system offers complete architectural liberty with seamless mulling and operable inserts that transform tailored luxury into architectural vision.

Unlimited window combinations through mulling and fixed panel configurations.

Customizable inserts allow pairing with operable window systems (350-T, 450-T).

Slim 1-7/16" perimeter sightlines maintain a sleek aesthetic in both block and nail-fin frames.

Flexible glazing orientation, interior or exterior, for tailored design.

Boutique options include steel-inspired 3/4" divided lites and mitered corner glass windows.



Endless possibilities, one solution.
Create the perfect space with the
3800-T window wall system.



Anthony Barcelo Photography



Eckert & Eckert Photography | Scott Edwards Architecture | BldgPdx



↔ Max Panel Square Footage: Casement, Awning, & Hopper: 24 ft² • Fixed: Determined by Site Wind Loads
+ Partner Products: Series 3800-T Fixed System • Example U-Factor: NFRC: 0.40 (Casement) / 0.24 (Fixed)

Rehner + Ryan | The Ranch Mine | Identity Construction



CS8 Photography



Travis Rowan Photography | Architect Linda Lange | Boyd Construction Inc.

With sophisticated elements and designer screens, this window system balances luxury style with fit and function.

Multiple handle options include Archetype Cam Handle, Spring Latch (hopper), multi-point latch, and rotogear.

Stainless-steel hinge options include narrow butt or concealed 4-bar hinges, both suited for coastal applications.

Luxury screen solutions with matching aluminum frames and stainless steel clips or inswing hinges, paired with UltraVue® 2 mesh for outstanding clarity.

Boutique options include a steel-look package.



Shape your space with the versatile 350-T. Where size and performance meet.



Andrew Bramasco Photography

Quiet strength and balanced movement define Fleetwood's exclusive sliding window, with elevated hardware options and a cleanly encapsulated screen design for minimalism at its finest.

Tandem stainless steel bearing rollers provide long-lasting, graceful movement.

Archetype Self-Locking Latch available in brushed stainless steel or black.

Sleek screen design is encapsulated cleanly within the frame-depth with Ultravue® 2 screen, so clear you forget it's even there.

Boutique options include high-performance integral stack bars and mulling with glaze-to-frame and panelized fixed lites.



Highlight your views with the 330-T.



Andrew Bramasco Photography

Door Hardware

Fleetwood’s aptly named Archetype hardware embodies our clientele’s commitment to luxury architectural principles. Our engineers design our proprietary hardware, not as an accessory, but as an integral element that ensures flawless functionality. Handcrafted in the USA from American-made, marine-grade stainless steel, each piece is electropolished for coastal endurance and backed by our Transferable Lifetime Warranty.

Archetype Sliding Door Hardware

GENERATION 4 & 3-SERIES



Archetype
(3-Series)



Archetype
(Black Powder Coat)
(3-Series)



**Archetype
Narrow**



**Archetype
Narrow**
(Black Powder Coat)



**Archetype
Strike Plate**



**Archetype
Edge Pull**



A4 Swiss Precision
Bearing Rollers
(Gen4)



A2 Swiss Precision
Bearing Rollers
(3-Series)



**Archetype
Track Insert**
(Shown in 2 Track 3070 Sill)

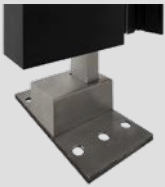
EDGE COLLECTION



A4-E Swiss Precision
Bearing Rollers
(EDGE |s|)



**Archetype
Blade Actuator
and Fin Pull**
(Black Powder Coat)



**Archetype
Blade Case**

Hinged Doors: Series 3900-T & 3200-T



FSB Lever #1076
(Series 3900-T)



FSB Lever #1075
(Series 3900-T)



FSB Lever #1005
(Series 3900-T)



Savio Butt Hinges
(Aluminum Finished to Match)
(Series 3900-T)



**Inactive Panel Flush
Bolt Latch**
(Series 3200-T)

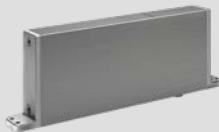


Adjustable Hinge
(Series 3200-T)

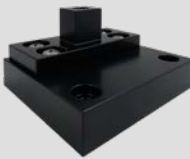


Keyless Electronic Lock
(Series 3200-T Smart Lock)

Pivot Doors: EDGE |pl, 4400-T, & 4400 Wood



**FritsJurgens
In-Rail Closer**
(4400-T & 4400 Wood)



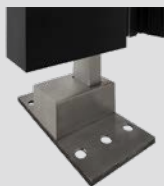
**Archetype
Floor Pivot**
(Black Powder Coat)
(4400-T & 4400 Wood)



**Rixson Floor
Closer**



**Archetype
Blade Actuator
and Fin Pull**
(EDGE |pl)
(Black Powder Coat)



**Archetype
Blade Case**
(EDGE |pl)



**Electronic
V-Lock**
(EDGE |pl)

Folding Door: Series 3600-T



DPL Handle



Hinge Handle



**Intermediate
Carrier**



Flush Pull



Collector Magnet
Magnetic Door Catches

Window Hardware

Our proprietary Archetype hardware collection was named for Fleetwood’s peerless commitment to architectural integrity. Rather than adapt off-the-shelf hardware, Fleetwood crafts custom components for effortless operation. Each piece is precision-built in the USA from marine-grade stainless steel and electropolished for coastal durability. Every component is backed by our Transferable Lifetime Warranty.

Casement



Archetype Cam Handle
(4-Bar Hinges)
(Series 450-T & 350-T)



Archetype Multi-Point Latch
(Series 450-T)



Multi-Point Latch¹
(Series 350-T)



Nesting Rotogear¹
(Series 450-T)



Folding Rotogear¹
(Butt Hinges)
(Series 350-T)

Awning



Archetype Cam Handle
(4-Bar Hinges)
(Series 450-T)



Archetype Multi-Point Latch
(Series 450-T)



Multi-Point Latch¹
(Series 350-T)



Nesting Rotogear¹
(Series 450-T)



Folding Rotogear^{1,2}
(4-Bar Hinges)
(Series 350-T)

Hopper



Archetype Spring Latch
(4-Bar Hinges)
(Series 450-T & 350-T)



Ring Pole
(Series 450-T & 350-T)

¹ Cast zinc (plated finish). ² Limited vent travel.

Casement, Awning, & Hopper: Hinges



Archetype Butt Hinge
(Series 450-T Shown)

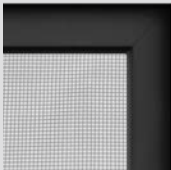


Archetype HP Butt Hinge
(Series 450-T)



4-Bar Hinge
(Series 450-T & 350-T)

Screens



Flat & Sliding Window Screen³
(Series 450-T, 350-T, & 330-T)



Hinged Screen³
(Series 450-T & 350-T Cam Handle)

Horizontal Slider



Archetype Window Latch
(Series 330-T)

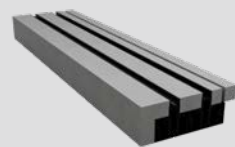


Roller
(Series 330-T)

³ All screens come with UltraVue®, nearly invisible mesh, by Phifer.®

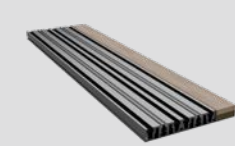
Sliding Door Sills

EDGE Collection

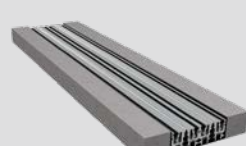


EDGE |s| Arche-Duct
Flush Sill - 2.5" Buried

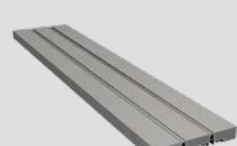
Generation 4



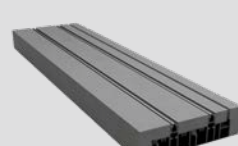
4070-T Low Profile Sill
7/8" Sill - Optional Sill
Leg Heights



4070-T Arche-Duct (Heavy Duty)
Flush Sill - 2" Buried

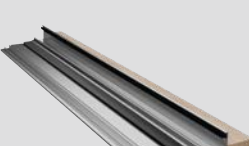


4070-T Hidden Sill
Flush Sill - 1" Buried
(Limited Performance)

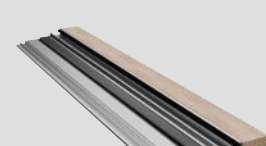


4070-T Arche-Duct (Hidden)
Flush Sill - 2" Buried

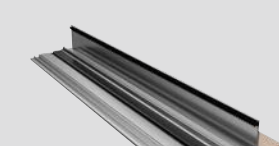
3-Series



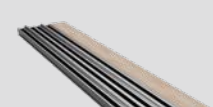
3000-T¹ Standard Sill
2" Sill (1-7/8" Non-Thermal)



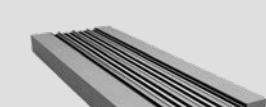
3000-T¹ Low-Profile Sill
1-1/4" Sill (Limited Performance)



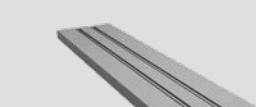
3000-T¹ High-Water Sill
3" Sill (HVHZ² Water)



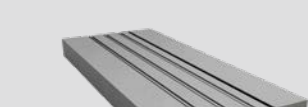
3070-T¹ Low Profile Sill
3/4" Sill - Optional Sill
Leg Heights



3070-T¹ Arche-Duct
Flush Sill - 2" Buried
(HVHZ² Water)



3050 Hidden Sill
Flush Sill - 1" Buried
(Limited Performance)



3050 Arche-Duct
Flush Sill - 2" Buried

¹ Thermal option shown, non-thermal available. ² High Velocity Hurricane Zone (HVHZ)



Berlyn Photography | XTEN Architecture



Berlyn Photography | Huntington Estate Properties

Here and Now Agency courtesy of M.E. Development | Abramson Architects

Bold Design. Strong Finish.

Timeless Finishes. Cleaner Living. With proper maintenance, our anodized finishes and factory-baked paints last a lifetime, reducing chemical waste from refinishing. We also use processes that eliminate Volatile Organic Compounds that some products emit into the air. This ensures the healthiest home and supports our planet’s environment.

CLASS I ANODIZED FINISHES

Subtle gradients and natural texture, perfect for earthy and biophilic design. Rather than a coating, anodized finishes are a type of etching process using multiple acid baths that alter the chemical structure of the aluminum, creating a hard, resilient surface.

STOCK



CLEAR



BLACK

CUSTOM



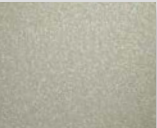
LIGHT BRONZE



MEDIUM BRONZE

CUSTOM MICA PAINT COLLECTION

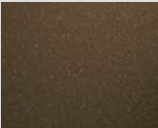
Mica paints create smooth, even finishes in natural tones, without the visible texture or gradation of anodized.



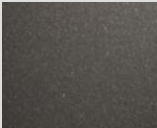
F-1



F-2



F-3



F-4



F-5

CUSTOM PAINT COLORS

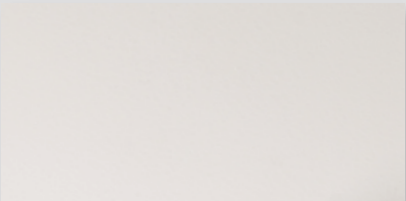
We can color match for any color using a physical sample, color name, or UC number. Our paint finishes use Kynar 500®, a high-performance fluoropolymer resin that delivers superior color and gloss retention compared to powder coating. Contact Fleetwood for a physical sample of these popular hues:



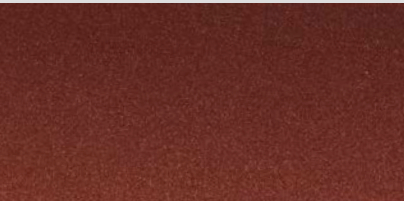
#50 BLACK



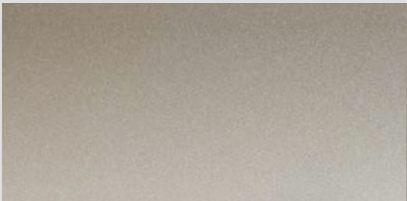
BEIGE



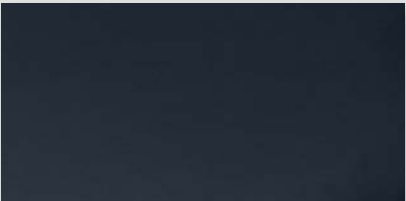
BONE WHITE



BRITE COPPER



CHAMPAGNE BRONZE SUNSTORM



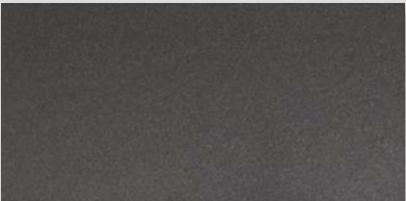
CHARCOAL GRAY



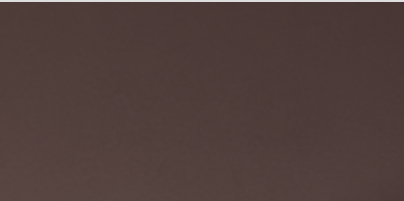
FASHION GRAY



LIGHT SEAWOLF



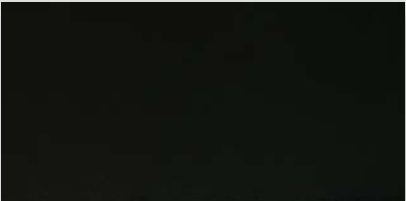
MEDIUM BRONZE



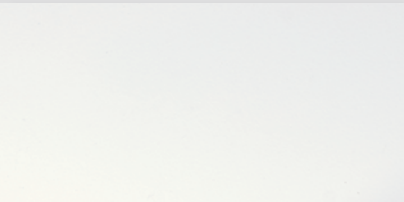
SAGE BROWN



SILVER MICA



STATUARY BRONZE



#10 WHITE



Discover finish details.



Taj Howe Photography | Heliotrope Architects | Tye Contracting Inc.



Adam Taylor Photography



Adam Potts Photography | Shawback Design | Griggs Custom Homes, Inc.



Product Updates

We are always improving. Check for updates.



Inspiration

Get inspired by projects from world-class architects, builders, and designers.



Find a Dealer or Showroom

Find an authorized dealer or showroom near you.



Transferable Lifetime Warranty

Our unique lifetime warranty transfers to any future homeowner.



Proprietary Features

Explore exclusive innovations found only in Fleetwood products.



Homeowners Guide

Learn what to consider when selecting premium windows and doors for your home.



Contact

Reach out, follow us, get quality customer support, or answers to your questions.



Nils Trinn Vissels, Inc. | deCoven & Associates



In our work, window and door systems are far more than functional thresholds: they play a vital role in shaping the character and spatial rhythm of a home. Fleetwood's refined minimalism and configurability allow us to choreograph light, air, and view with precision which helps animate the architecture and the lives within it.

CATHLEEN KEBERT-CARBONI,
KENDLE DESIGN COLLABORATIVE, ARIZONA



I want the largest glass possible with the thinnest sash possible. Fleetwood is one company that will make large panels of glass, which is critical to me as an architect.

LOU DESROSIERS,
DESROSIERS ARCHITECTS, MICHIGAN



Find your local dealer today.