

**FLEETWOOD**  
WINDOWS & DOORS  
FleetwoodUSA.com

**NORWOOD 3070EX M/S**  
XXXXP CUSTOM CONFIGURATION  
NO SCREENS

ORDER NO.:

ITEM NO.:

SCALE: 1/4

**DOOR COLLECTOR B.O.M.**

| FW PART NO.           | QTY. |
|-----------------------|------|
| 1063-1                | 3    |
| 1064-2                | 3    |
| SCREW SIZES / LENGTHS |      |
| #4-40 X 5/16"         | 6    |
| #10-32 X 1-1/8"       | 6    |

REQUIRED DEALER INFO.

**A**(DAYLIGHT WIDTH)

**B**(NET FRAME HEIGHT)

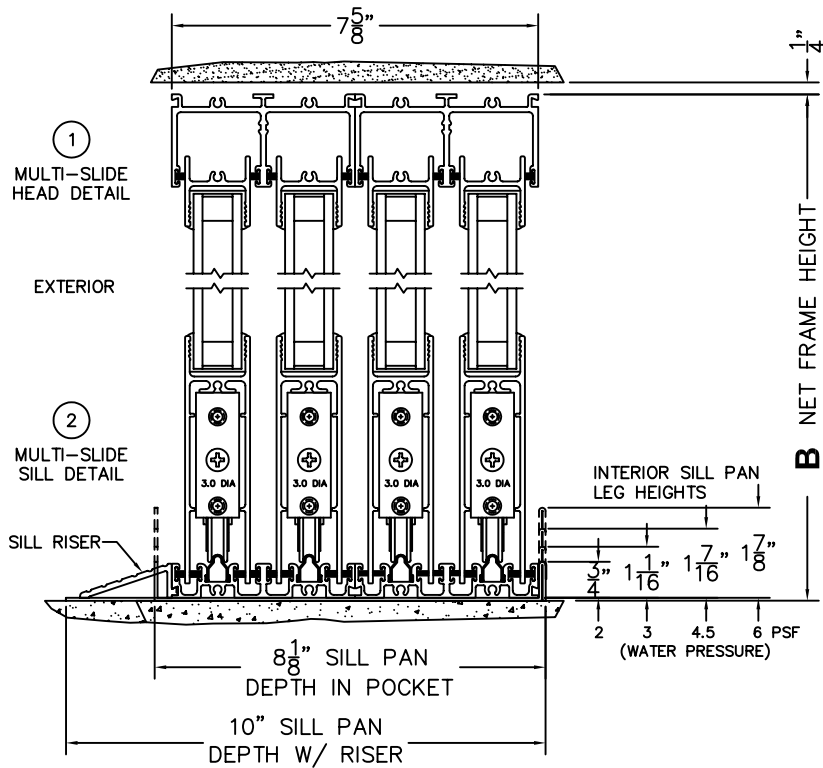
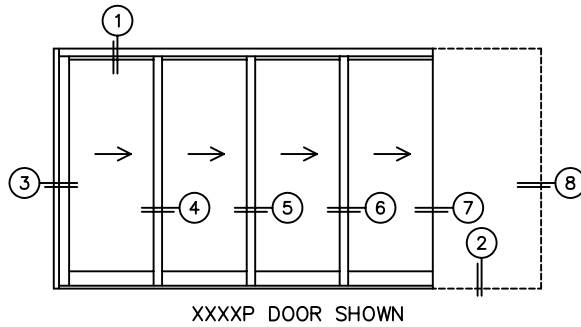
SILL PAN HEIGHT(INTERIOR LEG)  
(3/4", 1-1/16", 1-7/16" OR 1-7/8")

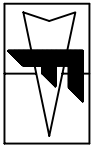
CALCULATED VALUES (FLEETWOOD SUPPLIED)

**C**(POCKET WIDTH)

**D**(NET FRAME WIDTH)

NOTES:





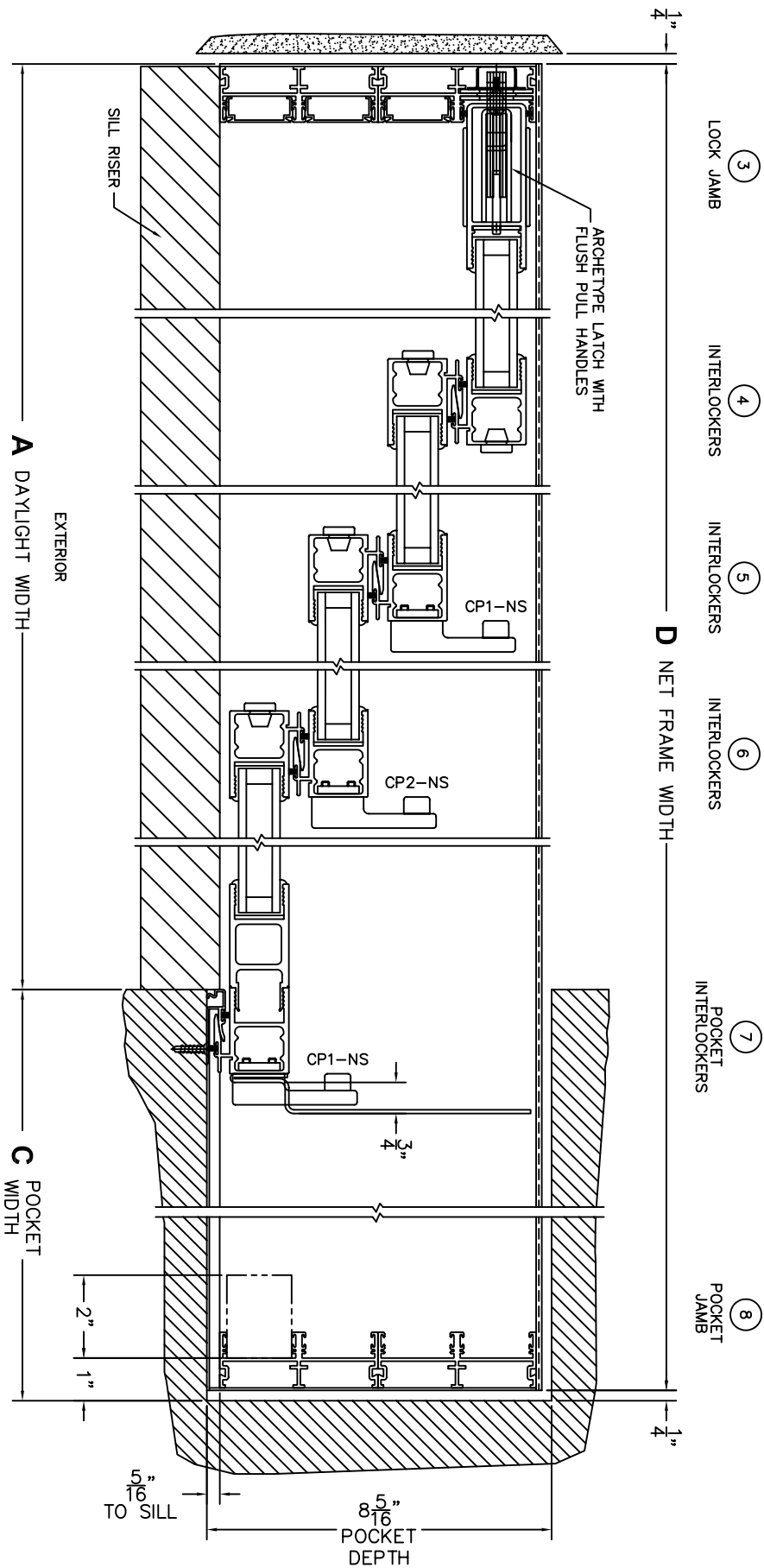
**FLEETWOOD**  
WINDOWS & DOORS  
FleetwoodUSA.com

**NORWOOD 3070EX M/S**  
XXXXP CUSTOM CONFIGURATION  
NO SCREENS

ORDER NO.:

ITEM NO.:

SCALE: 1/4





**FLEETWOOD**  
 WINDOWS & DOORS  
 FleetwoodUSA.com

**NORWOOD 3070EX M/S**  
 XXXXP CUSTOM CONFIGURATION  
 NO SCREENS

SCALE: 1/4

ORDER NO.:

ITEM NO.:

POCKET VIEW: PANELS IN OPEN POSITION

