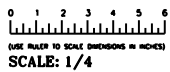




**NORWOOD 3070EX M/S**  
 XXXXXXXX STANDARD CONFIGURATION  
 NO SCREENS

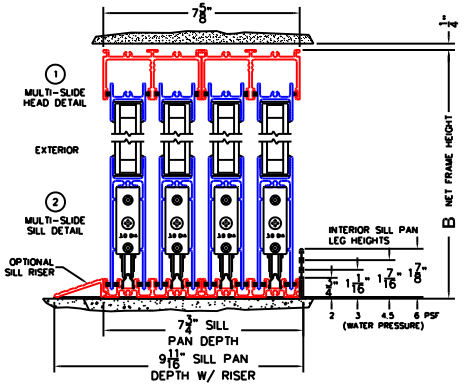
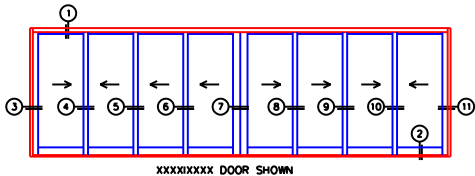
ORDER NO.:

ITEM NO.:



REQUIRED DEALER INFO.	
A (NET FRAME WIDTH)	
B (NET FRAME HEIGHT)	
SILL PAN HEIGHT (INTERIOR LEG)	
3/4", 1-1/16", 1-7/16" OR 1-7/8"	

NOTES:





**FLEETWOOD**  
WINDOWS & DOORS  
FleetwoodUSA.com

**NORWOOD 3070EX M/S**  
XXXXIXXXX STANDARD CONFIGURATION  
NO SCREENS

ORDER NO.:

ITEM NO.:

REQUIRED DEALER INFO.

**A** (NET FRAME WIDTH)

**B** (NET FRAME HEIGHT)

SILL PAN HEIGHT (INTERIOR LEG)  
(3/4", 1-1/16", 1-7/16" OR 1-7/8")



(USE RULER TO SCALE DIMENSIONS IN INCHES)

SCALE: 1/4"

NOTES:

- ③  
LOCK JAMB
- ④  
INTERLOCKERS
- ⑤  
INTERLOCKERS
- ⑥  
INTERLOCKERS
- ⑦  
MEETING STILES
- ⑧  
INTERLOCKERS
- ⑨  
INTERLOCKERS
- ⑩  
INTERLOCKERS
- ⑪  
LOCK JAMB

