

FLEETWOOD
WINDOWS & DOORS
FleetwoodUSA.com

NORWOOD 3070EX M/S
PXXXXXXX CUSTOM CONFIGURATION
NO SCREENS

ORDER NO.:

ITEM NO.:

SCALE: 1/4

REQUIRED DEALER INFO.

A (DAYLIGHT WIDTH)	
B (NET FRAME HEIGHT)	
SILL PAN HEIGHT(INTERIOR LEG) (3/4", 1-1/16", 1-7/16" OR 1-7/8")	

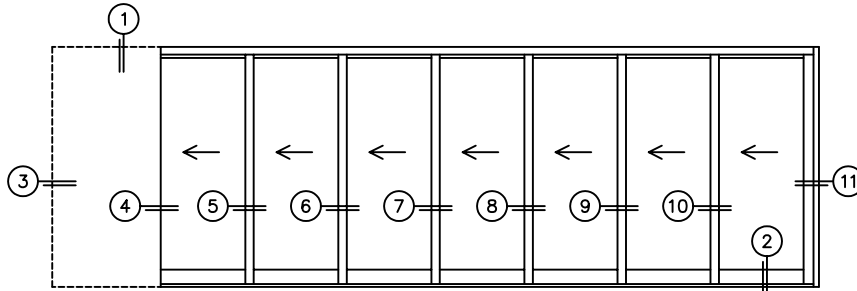
CALCULATED VALUES (FLEETWOOD SUPPLIED)

C (POCKET WIDTH)	
D (NET FRAME WIDTH)	

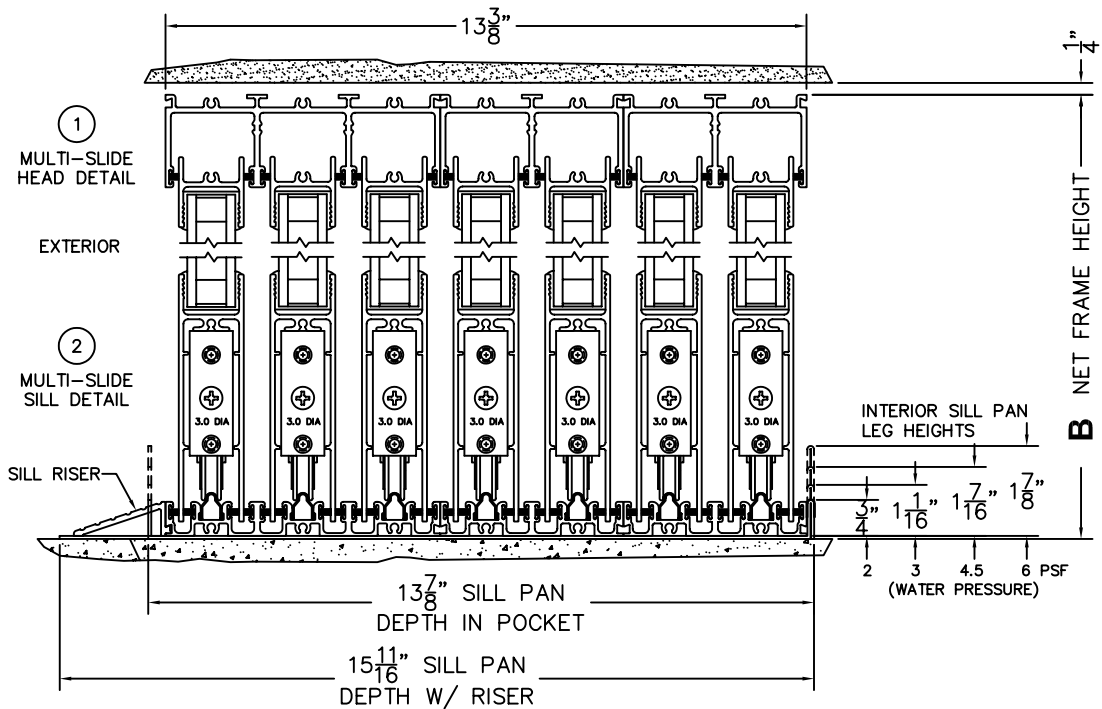
NOTES:

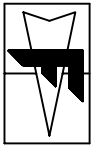
DOOR COLLECTOR B.O.M.

FW PART NO.	QTY.
1063-1	6
1118	1
1064-2	6
SCREW SIZES / LENGTHS	
#4-40 X 5/16"	12
#10-32 X 1-1/8"	10
#10-32 X 3"	2



PXXXXXXX DOOR SHOWN



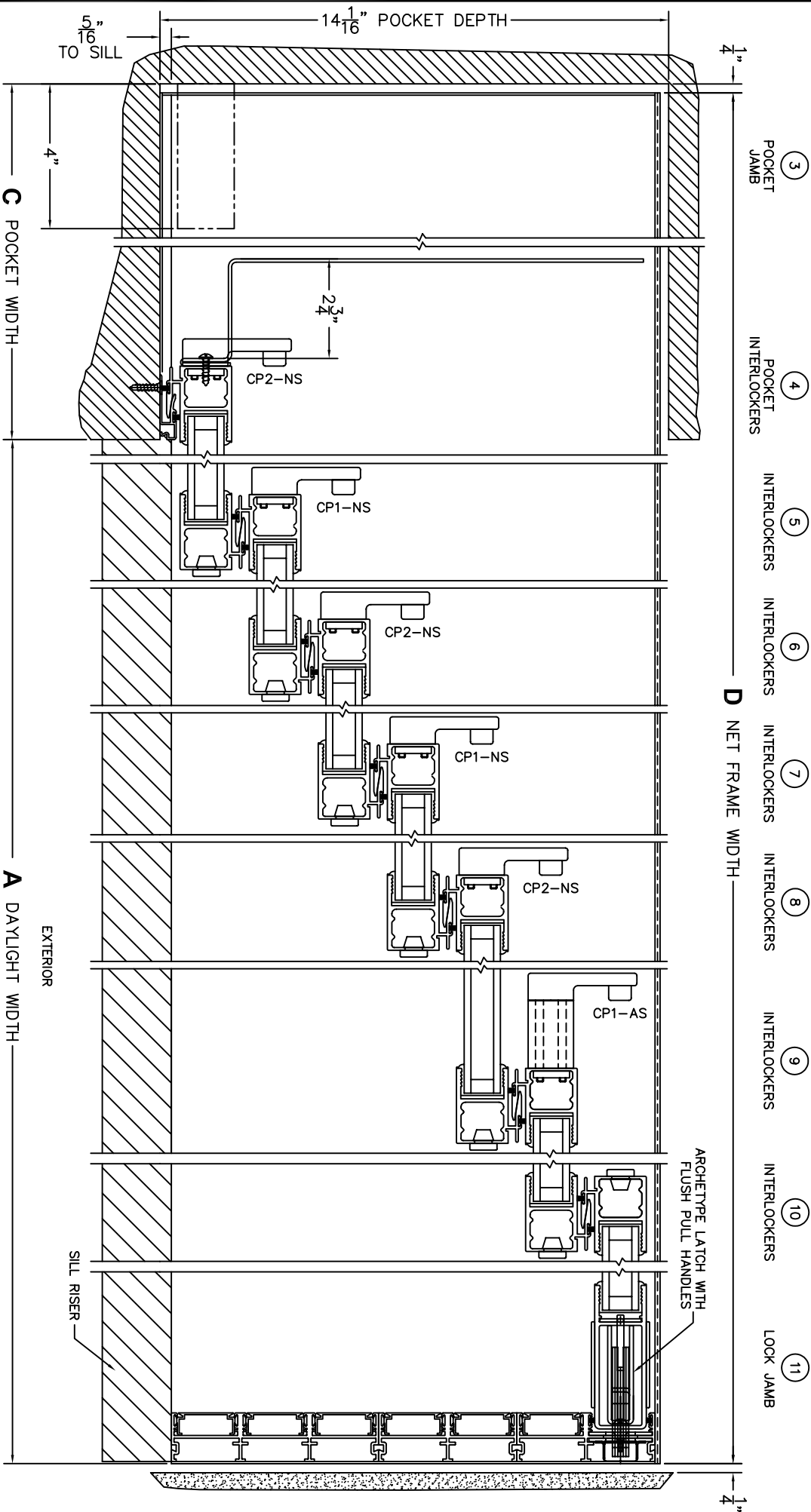


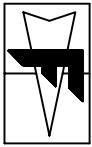
FLEETWOOD
WINDOWS & DOORS
FleetwoodUSA.com

NORWOOD 3070EX M/S
PXXXXXX CUSTOM CONFIGURATION
NO SCREENS

ORDER NO.:
ITEM NO.:

SCALE: 1/4





FLEETWOOD
 WINDOWS & DOORS
 FleetwoodUSA.com

NORWOOD 3070EX M/S
 PXXXXXX CUSTOM CONFIGURATION
 NO SCREENS

ORDER NO.:

ITEM NO.:

SCALE: 1/4

POCKET VIEW: PANELS IN OPEN POSITION

