



**FLEETWOOD**  
WINDOWS & DOORS  
FleetwoodUSA.com

**NORWOOD 3070EX M/S**  
PXXXXX STANDARD CONFIGURATION  
WITH SCREENS

ORDER NO.:

ITEM NO.:

REQUIRED DEALER INFO.

**A**(DAYLIGHT WIDTH)

**B**(NET FRAME HEIGHT)

SILL PAN HEIGHT (INTERIOR LEG)  
(3/4", 1-1/16", 1-7/16" OR 1-7/8")

CALCULATED VALUES (FLEETWOOD SUPPLIED)

**C**(POCKET WIDTH)

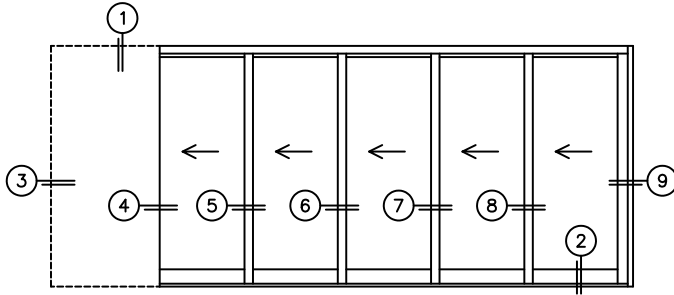
**D**(NET FRAME WDH)

NOTES:

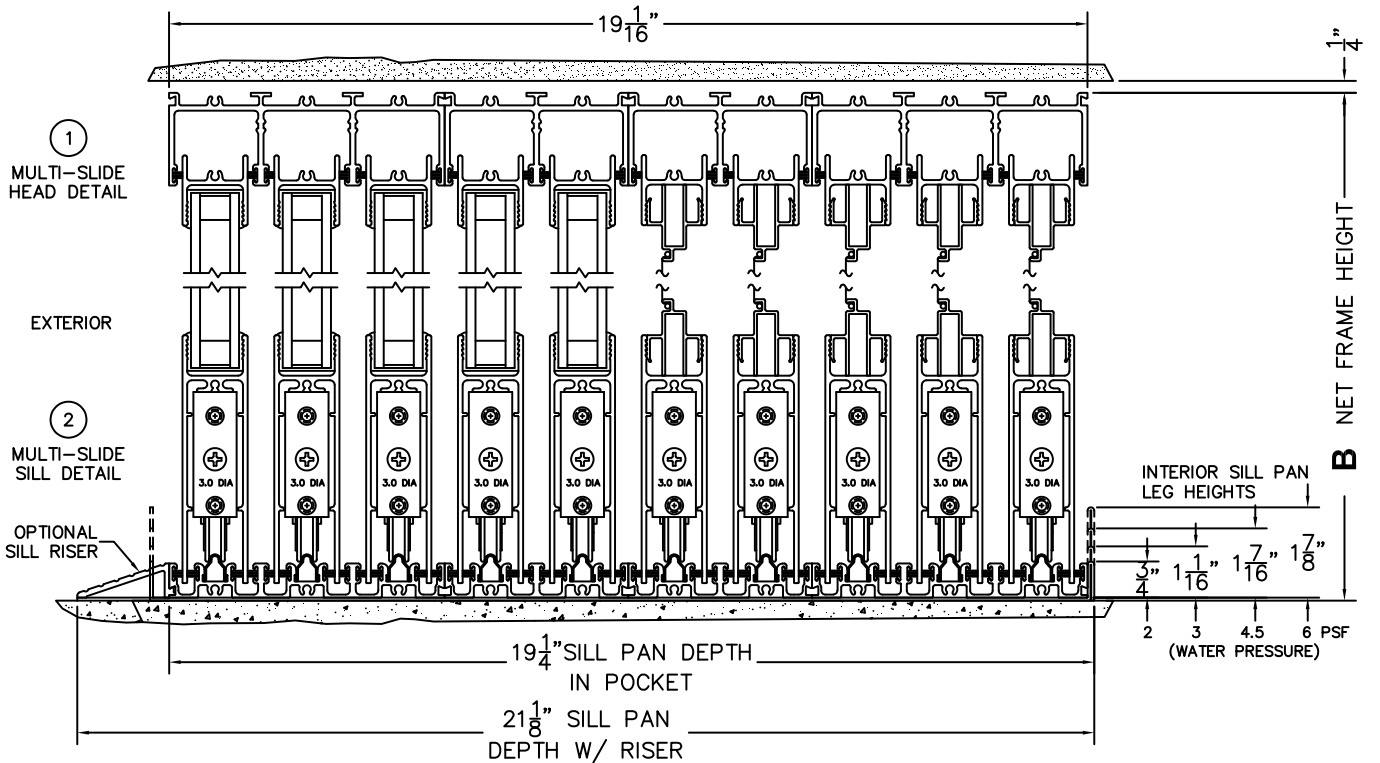


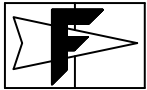
(USE RULER TO SCALE DIMENSIONS IN INCHES)

SCALE: 1/4"



PXXXXX DOOR SHOWN





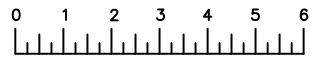
**FLEETWOOD**  
WINDOWS & DOORS  
FleetwoodUSA.com

# NORWOOD 3070EX M/S

PXXXXX STANDARD CONFIGURATION  
WITH SCREENS

ORDER NO.:

ITEM NO.:



(USE RULER TO SCALE DIMENSIONS IN INCHES)

SCALE: 1/4"

③  
POCKET  
JAMB

④  
POCKET  
INTERLOCKERS

⑤  
INTERLOCKERS

⑥  
INTERLOCKERS

⑦  
INTERLOCKERS

⑧  
INTERLOCKERS

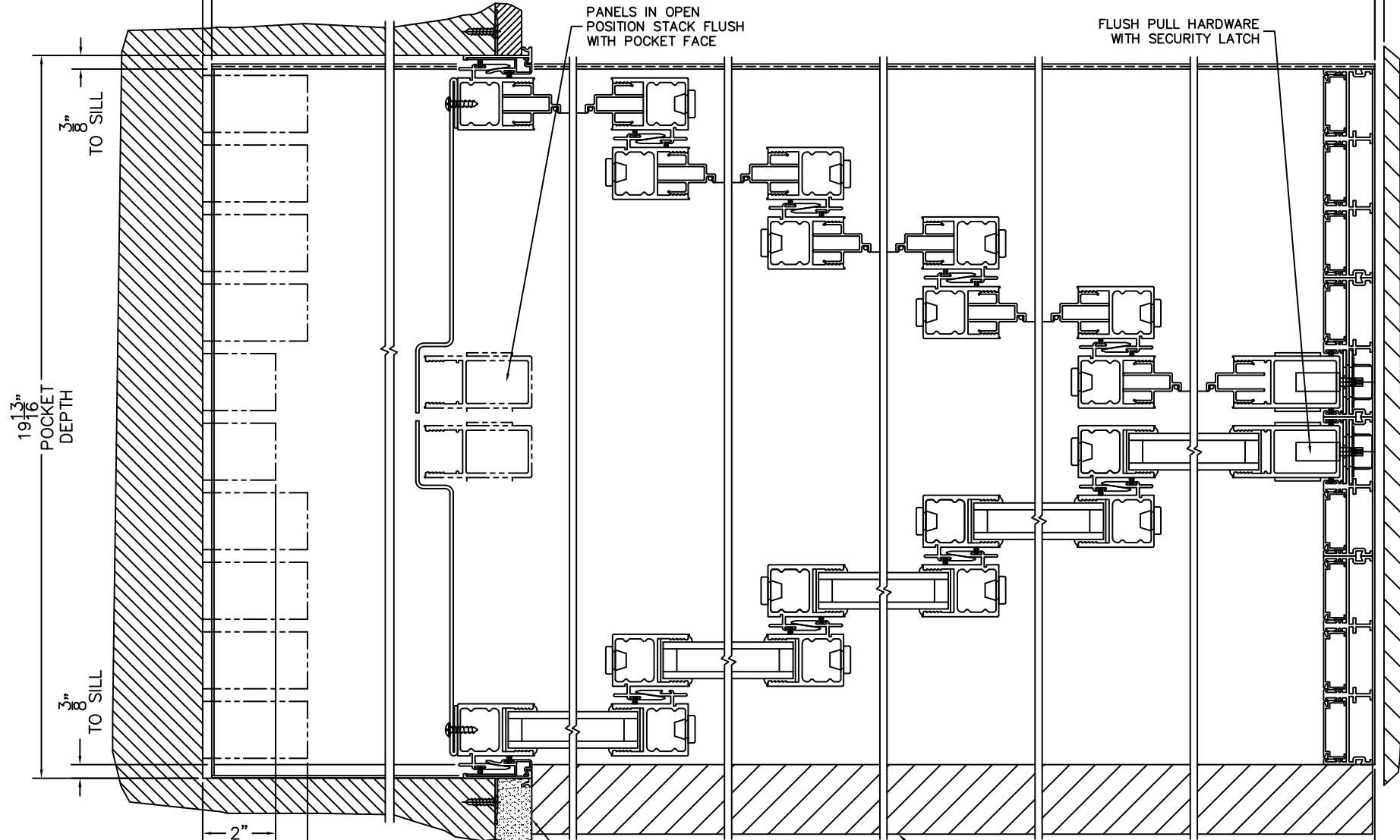
⑨  
LOCK JAMB

D NET FRAME WIDTH

1/4"

PANELS IN OPEN  
POSITION STACK FLUSH  
WITH POCKET FACE

FLUSH PULL HARDWARE  
WITH SECURITY LATCH



19 13/16"  
POCKET  
DEPTH

3/8"  
TO SILL

3/8"  
TO SILL

2"  
2 7/8"

1"

\*FINISHED  
POCKET  
FACE

EXTERIOR

OPTIONAL  
SILL RISER

C POCKET  
WIDTH

A DAYLIGHT  
WIDTH

\*CAUTION: WHEN CONSTRUCTING  
POCKET NOTE THAT DAYLIGHT  
WIDTH DOES NOT INCLUDE 1" SET  
BACK FOR POST INTERLOCKER.