

FLEETWOOD

Windows & Doors

2485 Railroad Street, Corona, CA 92880
(800) 736-7363 www.fleetwoodusa.com

NORWOOD 3070EX M/S

PXXXX STANDARD CONFIGURATION
WITH SCREENS

ORDER NO.:

ITEM NO.:

REQUIRED DEALER INFO.

A(DAYLIGHT WIDTH)

B(NET FRAME HEIGHT)

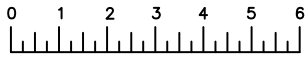
SILL PAN HEIGHT(INTERIOR LEG)
(3/4", 1-1/16", 1-7/16" OR 1-7/8")

CALCULATED VALUES (FLEETWOOD SUPPLIED)

C(POCKET WIDTH)

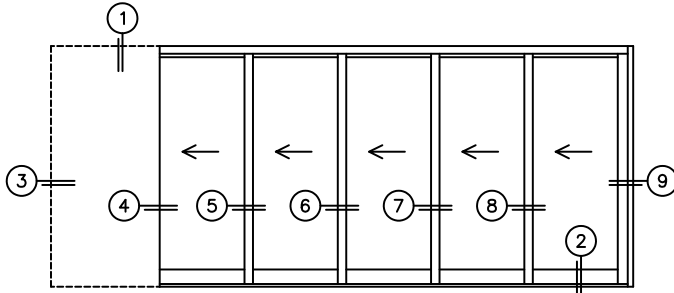
D(NET FRAME WIDTH)

NOTES:

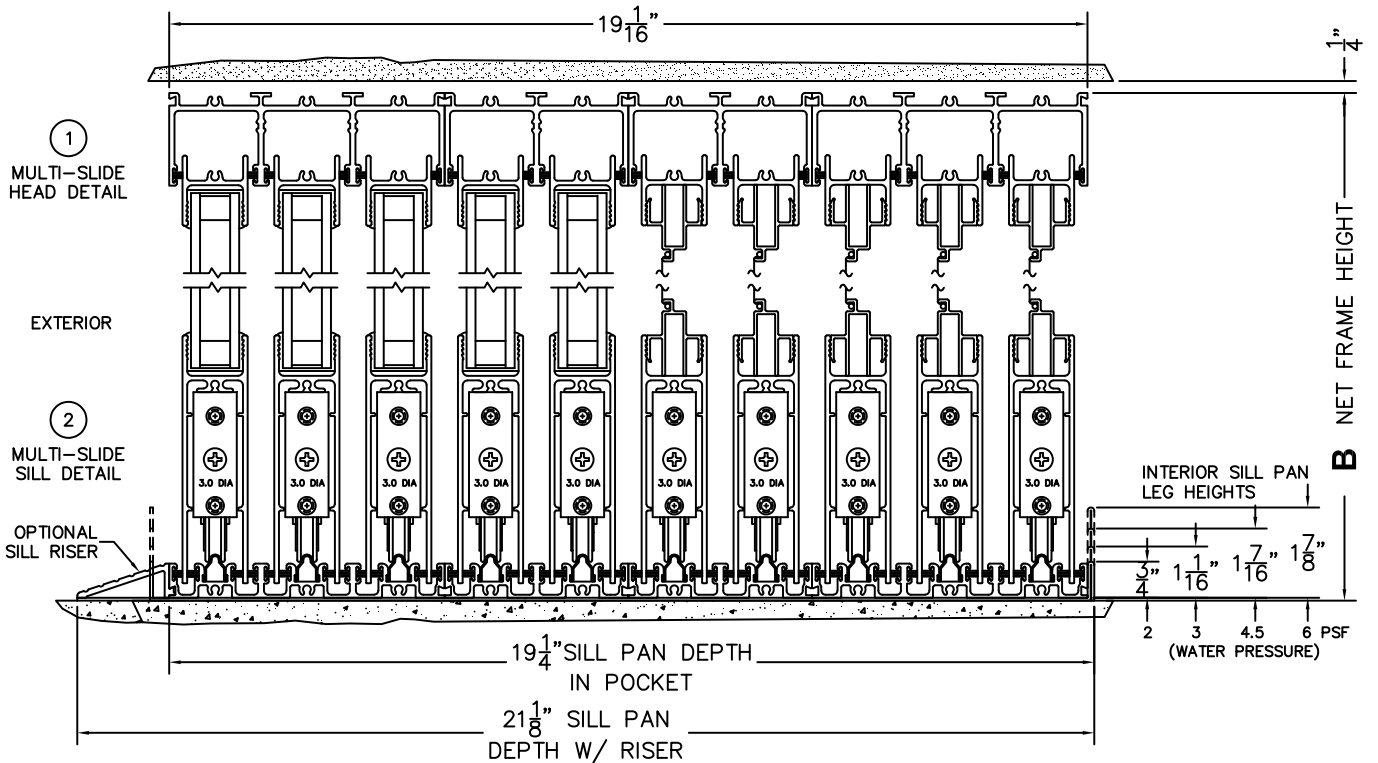


(USE RULER TO SCALE DIMENSIONS IN INCHES)

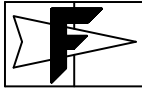
SCALE: 1/4



PXXXX DOOR SHOWN



NOTE: THIS DRAWING AND THE ACCOMPANYING "OPTIONS AND UPGRADES" ARE FOR CONCEPT ONLY! AT THE TIME OF ORDER WE WILL CUSTOMIZE THE DRAWINGS TO FIT THE FINAL CONFIGURATION. SEE DRAWINGS 3070-07 THRU 3070-08 FOR ADDITIONAL INFORMATION.



FLEETWOOD

Windows & Doors

2485 Railroad Street, Corona, CA 92880
(800) 736-7363 www.fleetwoodusa.com

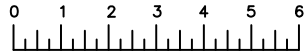
NORWOOD 3070EX M/S

PXXXXX STANDARD CONFIGURATION

WITH SCREENS

ORDER NO.:

ITEM NO.:



(USE RULER TO SCALE DIMENSIONS IN INCHES)

SCALE: 1/4

③
POCKET
JAMB

④
POCKET
INTERLOCKERS

⑤
INTERLOCKERS

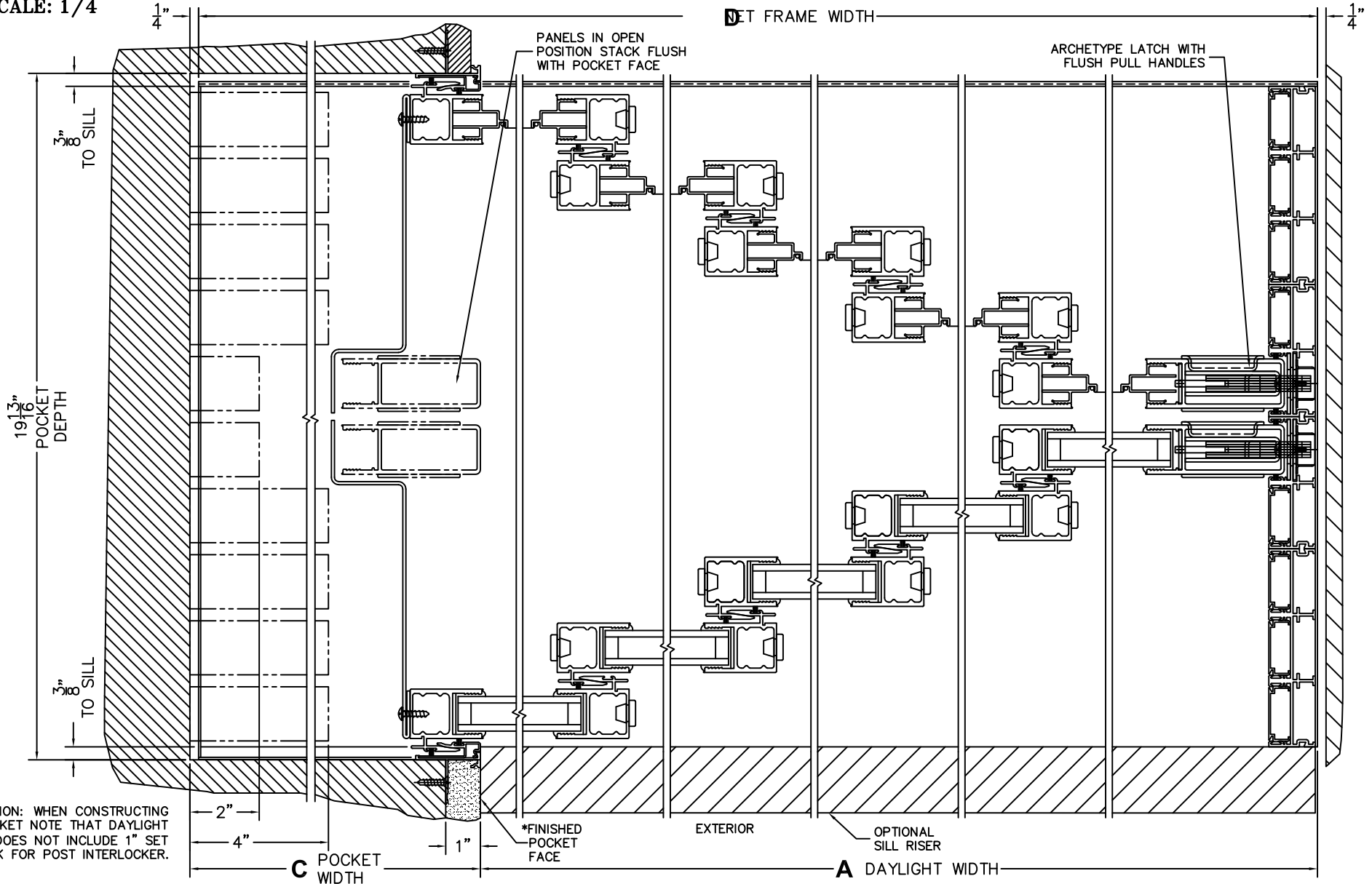
⑥
INTERLOCKERS

⑦
INTERLOCKERS

⑧
INTERLOCKERS

⑨
LOCK JAMB

NET FRAME WIDTH



PANELS IN OPEN
POSITION STACK FLUSH
WITH POCKET FACE

ARCHETYPE LATCH WITH
FLUSH PULL HANDLES

19 13/16"
POCKET
DEPTH

3/8"
TO SILL

3/8"
TO SILL

1/4"

1/4"

*CAUTION: WHEN CONSTRUCTING
POCKET NOTE THAT DAYLIGHT
WIDTH DOES NOT INCLUDE 1" SET
BACK FOR POST INTERLOCKER.

*FINISHED
POCKET
FACE

EXTERIOR

OPTIONAL
SILL RISER

C POCKET
WIDTH

A DAYLIGHT WIDTH