



FLEETWOOD

Windows & Doors

2485 Railroad Street, Corona, CA 92880
(800) 736-7363 www.fleetwoodusa.com

NORWOOD 3070EX M/S

PXXX STANDARD CONFIGURATION
WITH SCREENS

ORDER NO.:

ITEM NO.:

REQUIRED DEALER INFO.

A(DAYLIGHT WIDTH)

B(NET FRAME HEIGHT)

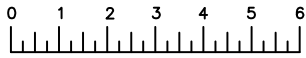
SILL PAN HEIGHT (INTERIOR LEG)
(3/4", 1-1/16", 1-7/16" OR 1-7/8")

CALCULATED VALUES (FLEETWOOD SUPPLIED)

C(POCKET WIDTH)

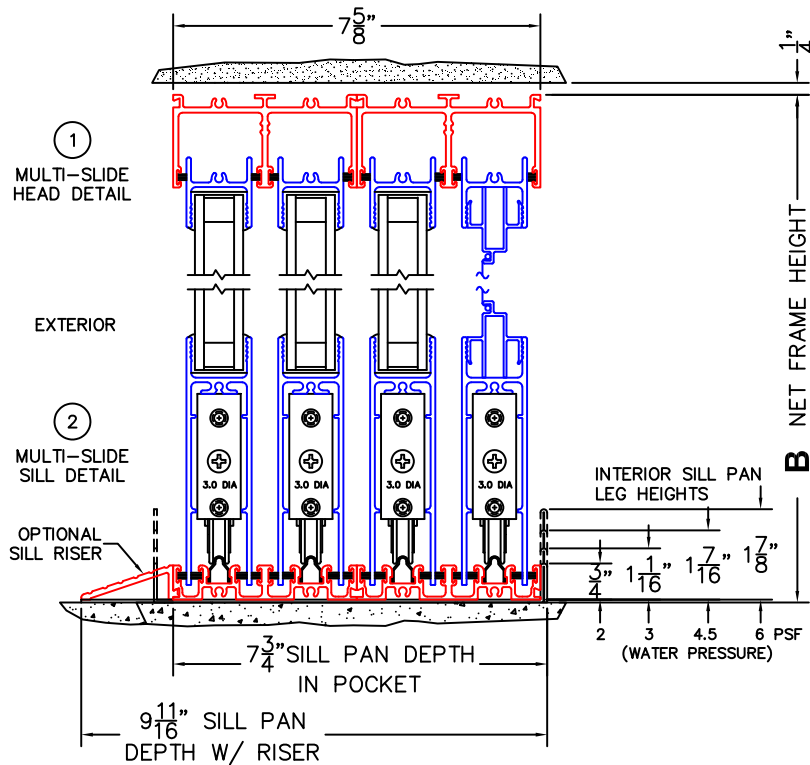
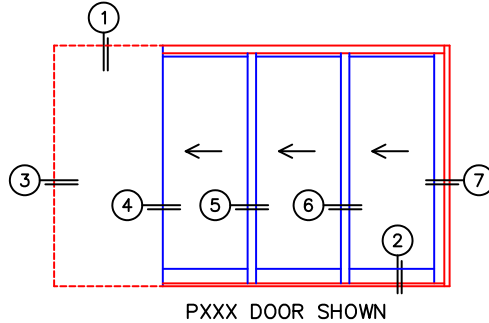
D(NET FRAME WDH)

NOTES:

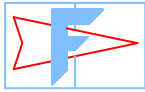


(USE RULER TO SCALE DIMENSIONS IN INCHES)

SCALE: 1/4



NOTE: THIS DRAWING AND THE ACCOMPANYING "OPTIONS AND UPGRADES" ARE FOR CONCEPT ONLY! AT THE TIME OF ORDER WE WILL CUSTOMIZE THE DRAWINGS TO FIT THE FINAL CONFIGURATION. SEE DRAWINGS 3070-07 THRU 3070-08 FOR ADDITIONAL INFORMATION.



FLEETWOOD

Windows & Doors

2485 Railroad Street, Corona, CA 92880
(800) 736-7363 www.fleetwoodusa.com

NORWOOD 3070EX M/S

**PXXX STANDARD CONFIGURATION
WITH SCREENS**

ORDER NO.:

ITEM NO.:



(USE RULER TO SCALE DIMENSIONS IN INCHES)

SCALE: 1/4

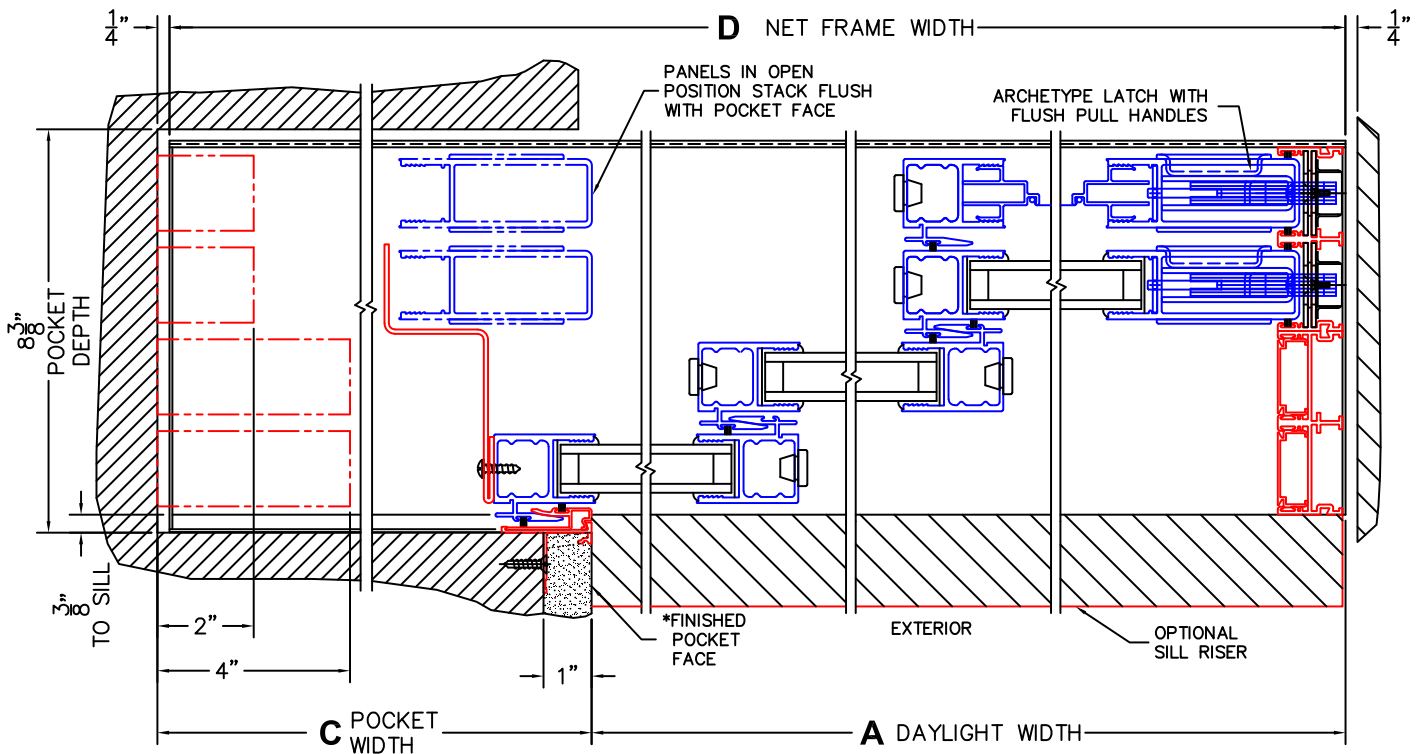
③
POCKET
JAMB

④
POCKET
INTERLOCKERS

⑤
INTERLOCKERS

⑥
INTERLOCKERS

⑦
LOCK JAMB



*CAUTION: WHEN CONSTRUCTING POCKET NOTE THAT DAYLIGHT WIDTH DOES NOT INCLUDE 1" SET BACK FOR POST INTERLOCKER.