

**FLEETWOOD**  
WINDOWS & DOORS  
FleetwoodUSA.com

# NORWOOD 3070EX M/S

PXXIXP CUSTOM CONFIGURATION  
NO SCREENS

ORDER NO.:

ITEM NO.:

REQUIRED DEALER INFO.

**A**(DAYLIGHT WIDTH)

**B**(NET FRAME HEIGHT)

SILL PAN HEIGHT(INTERIOR LEG)  
(3/4", 1-1/16", 1-7/16" OR 1-7/8")

CALCULATED VALUES (FLEETWOOD SUPPLIED)

**C**(POCKET WIDTH)

**D**(NET FRAME WIDTH)

NOTES:



(USE RULER TO SCALE DIMENSIONS IN INCHES)

SCALE: 1/4

1  
MULTI-SLIDE  
HEAD DETAIL

EXTERIOR

2  
MULTI-SLIDE  
SILL DETAIL

OPTIONAL  
SILL RISER

4 3/8" SILL  
PAN DEPTH  
IN POCKET

6 1/4" SILL  
PAN DEPTH  
WITH RISER

3  
POCKET  
JAMB

4  
POCKET  
INTERLOCKERS

5  
INTERLOCKERS

6  
MEETING STILES

7  
INTERLOCKERS

8  
POCKET  
INTERLOCKERS

9  
POCKET  
JAMB

**D** NET FRAME WIDTH

DUMMY FLUSH HARDWARE  
WITH THUMB TURN  
AND SECURITY LATCH

LOCK STILE PANEL IN OPEN POSITION  
STACKS FLUSH WITH POCKET FACE

1/4"  
6 1/2" POCKET  
DEPTH  
TO SILL

2"  
4 7/8" POCKET  
WIDTH

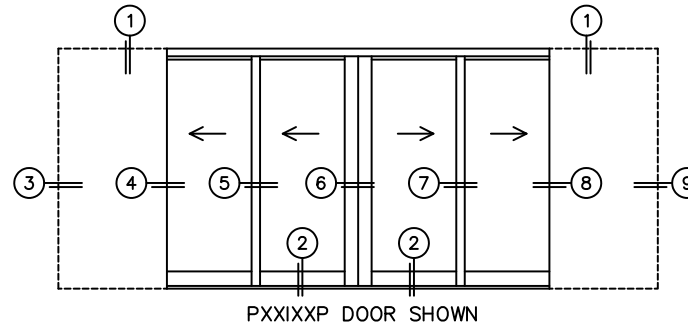
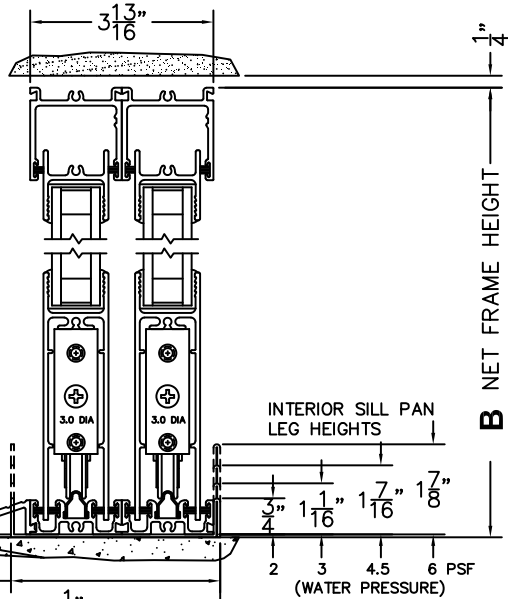
OPTIONAL SILL  
RISER

**A** DAYLIGHT WIDTH

\*FINISHED  
POCKET FACE

1"  
4 7/8" POCKET  
WIDTH

TO SILL



PXXIXP DOOR SHOWN

\*CAUTION: WHEN CONSTRUCTING POCKET NOTE THAT DAYLIGHT WIDTH DOES NOT INCLUDE 1" SET BACK FOR POST INTERLOCKER.