

**FLEETWOOD**  
WINDOWS & DOORS  
FleetwoodUSA.com

# NORWOOD 3070EX M/S

PXIXP CUSTOM CONFIGURATION  
NO SCREENS

ORDER NO.:

ITEM NO.:

REQUIRED DEALER INFO.

**A**(DAYLIGHT WIDTH)

**B**(NET FRAME HEIGHT)

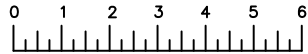
SILL PAN HEIGHT(INTERIOR LEG)  
(3/4", 1-1/16", 1-7/16" OR 1-7/8")

CALCULATED VALUES (FLEETWOOD SUPPLIED)

**C**(POCKET WIDTH)

**D**(NET FRAME WIDTH)

NOTES:



(USE RULER TO SCALE DIMENSIONS IN INCHES)

SCALE: 1/4

①  
MULTI-SLIDE  
HEAD DETAIL

EXTERIOR

②  
MULTI-SLIDE  
SILL DETAIL

INTERIOR SILL PAN  
LEG HEIGHTS

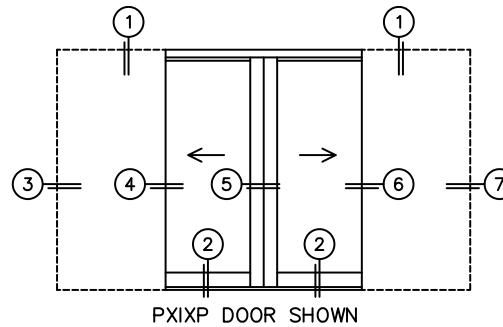
OPTIONAL  
SILL RISER

2-7/16" SILL  
PAN DEPTH  
IN POCKET

4-5/16" SILL  
PAN DEPTH  
WITH RISER

2 3 4.5 6 PSF  
(WATER PRESSURE)

1/4" NET FRAME HEIGHT



③  
POCKET  
JAMB

④  
POCKET  
INTERLOCKERS

⑤  
MEETING STILES

⑥  
POCKET  
INTERLOCKERS

⑦  
POCKET  
JAMB

**D** NET FRAME WIDTH

1/4" TO SILL  
3/100" POCKET DEPTH

FLUSH PULL HARDWARE  
WITH SECURITY LATCH

LOCK STILE PANEL IN OPEN POSITION  
STACKS FLUSH WITH POCKET FACE

EXTERIOR

OPTIONAL  
SILL RISER

\*FINISHED  
POCKET  
FACE

**C** POCKET  
WIDTH

**A** DAYLIGHT WIDTH

**C** POCKET  
WIDTH

\*CAUTION: WHEN CONSTRUCTING POCKET NOTE THAT DAYLIGHT WIDTH

DOES NOT INCLUDE 1" SET BACK FOR POST INTERLOCKER.