

NORWOOD 3070EX M/S

PXIXP CUSTOM CONFIGURATION
NO SCREENS

ORDER NO.:

ITEM NO.:

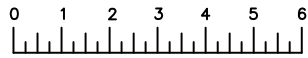
REQUIRED DEALER INFO.

A (DAYLIGHT WIDTH)	
B (NET FRAME HEIGHT)	
SILL PAN HEIGHT(INTERIOR LEG) (3/4", 1-1/16", 1-7/16" OR 1-7/8")	

CALCULATED VALUES (FLEETWOOD SUPPLIED)

C (POCKET WIDTH)	
D (NET FRAME WIDTH)	

NOTES:



(USE RULER TO SCALE DIMENSIONS IN INCHES)

SCALE: 1/4

①
MULTI-SLIDE
HEAD DETAIL

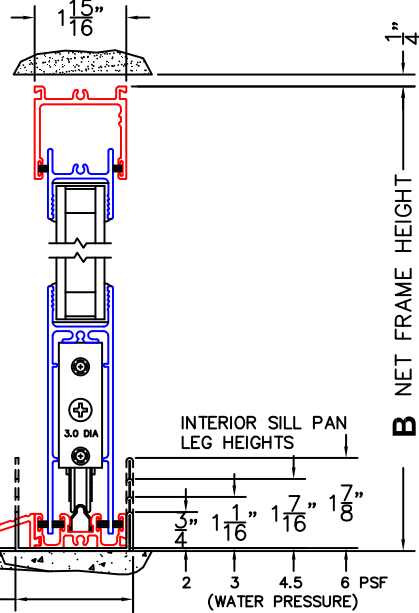
EXTERIOR

②
MULTI-SLIDE
SILL DETAIL

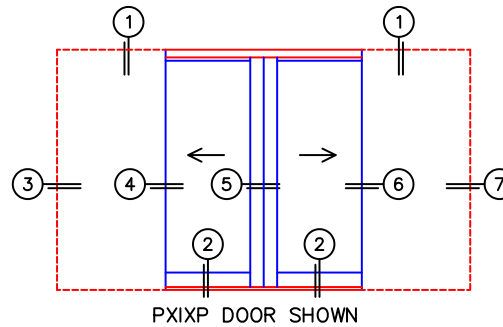
OPTIONAL
SILL RISER

2 7/16" SILL
PAN DEPTH
IN POCKET

4 5/16" SILL PAN DEPTH
WITH RISER



B NET FRAME HEIGHT



PXIXP DOOR SHOWN

③
POCKET
JAMB

C POCKET
WIDTH

④
POCKET
INTERLOCKERS

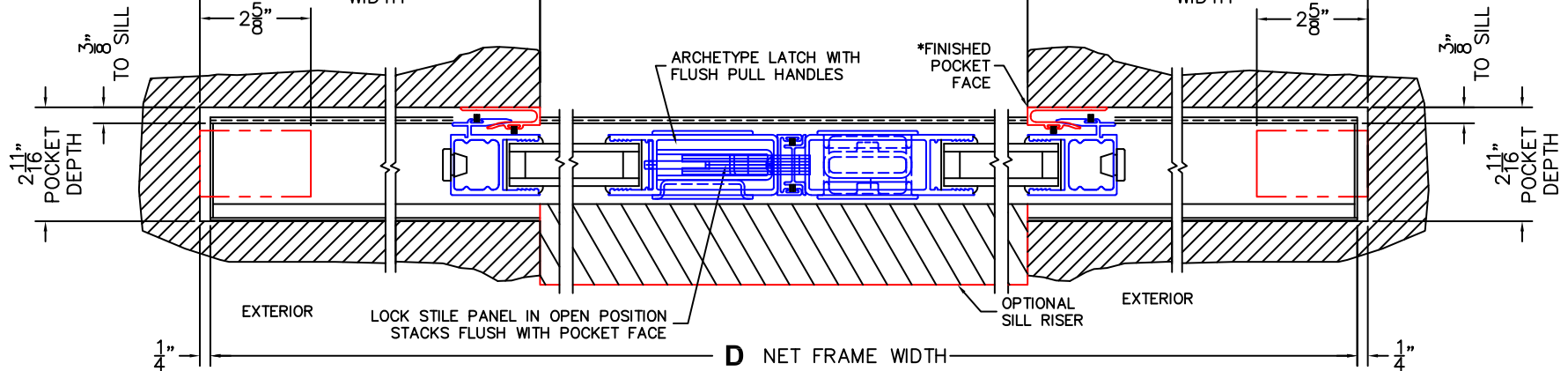
⑤
MEETING STILES

A DAYLIGHT WIDTH

⑥
POCKET
INTERLOCKERS

C POCKET
WIDTH

⑦
POCKET
JAMB



D NET FRAME WIDTH

*CAUTION: WHEN CONSTRUCTING POCKET NOTE THAT DAYLIGHT WIDTH

DOES NOT INCLUDE 1" SET BACK FOR POST INTERLOCKER.