

FLEETWOOD
WINDOWS & DOORS
FleetwoodUSA.com

NORWOOD 3070EX M/S

PXIXP CUSTOM CONFIGURATION
NO SCREENS

ORDER NO.:

ITEM NO.:

REQUIRED DEALER INFO.

A(DAYLIGHT WIDTH)

B(NET FRAME HEIGHT)

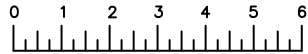
SILL PAN HEIGHT(INTERIOR LEG)
(3/4", 1-1/16", 1-7/16" OR 1-7/8")

CALCULATED VALUES (FLEETWOOD SUPPLIED)

C(POCKET WIDTH)

D(NET FRAME WIDTH)

NOTES:



(USE RULER TO SCALE DIMENSIONS IN INCHES)

SCALE: 1/4

①
MULTI-SLIDE
HEAD DETAIL

EXTERIOR

②
MULTI-SLIDE
SILL DETAIL

INTERIOR SILL PAN
LEG HEIGHTS

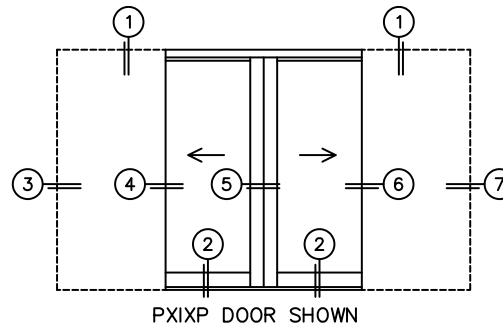
OPTIONAL
SILL RISER

2-7/16" SILL
PAN DEPTH
IN POCKET

4-5/16" SILL
PAN DEPTH
WITH RISER

2 3 4.5 6 PSF
(WATER PRESSURE)

1/4"
B NET FRAME HEIGHT



③
POCKET
JAMB

④
POCKET
INTERLOCKERS

⑤
MEETING STILES

⑥
POCKET
INTERLOCKERS

⑦
POCKET
JAMB

D NET FRAME WIDTH

LOCK STILE PANEL IN OPEN POSITION
STACKS FLUSH WITH POCKET FACE

FLUSH PULL HARDWARE
WITH SECURITY LATCH

3/16"
TO SILL

2-11/16"
POCKET
DEPTH

EXTERIOR

OPTIONAL
SILL RISER

*FINISHED
POCKET
FACE

C POCKET
WIDTH

A DAYLIGHT WIDTH

C POCKET
WIDTH

*CAUTION: WHEN CONSTRUCTING POCKET NOTE THAT DAYLIGHT WIDTH

DOES NOT INCLUDE 1" SET BACK FOR POST INTERLOCKER.
DATE: