



**FLEETWOOD**  
WINDOWS & DOORS  
FleetwoodUSA.com

**NORWOOD 3070EX M/S**  
OXXIXXX STANDARD CONFIGURATION  
NO SCREENS

ORDER NO.:

ITEM NO.:

REQUIRED DEALER INFO.

**A** (NET FRAME WIDTH)

**B** (NET FRAME HEIGHT)

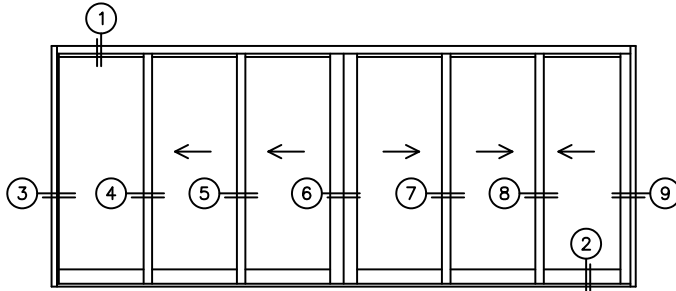
SILL PAN HEIGHT (INTERIOR LEG)  
(3/4", 1-1/16", 1-7/16" OR 1-7/8")

NOTES:

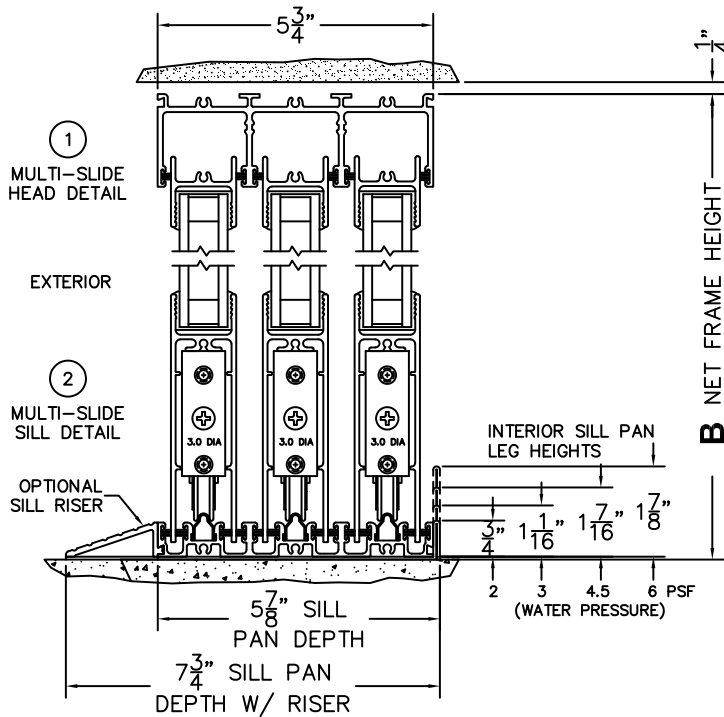


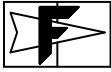
(USE RULER TO SCALE DIMENSIONS IN INCHES)

SCALE: 1/4



OXXIXXX DOOR SHOWN





**FLEETWOOD**  
WINDOWS & DOORS  
FleetwoodUSA.com

**NORWOOD 3070EX M/S**  
OXXIXXX STANDARD CONFIGURATION  
NO SCREENS

ORDER NO.:

ITEM NO.:



(USE RULER TO SCALE DIMENSIONS IN INCHES)

SCALE: 1/4

REQUIRED DEALER INFO.

A (NET FRAME WIDTH)

B (NET FRAME HEIGHT)

SILL PAN HEIGHT (INTERIOR LEG)  
(3/4", 1-1/16", 1-7/16" OR 1-7/8")

NOTES:

③  
FIXED JAMB

④  
INTERLOCKERS

⑤  
INTERLOCKERS

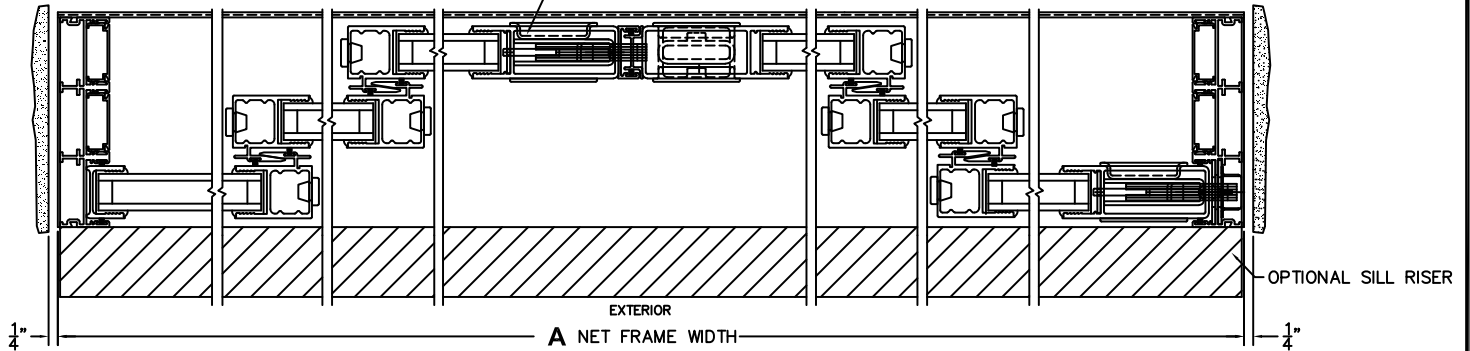
⑥  
MEETING STILES

⑦  
INTERLOCKERS

⑧  
INTERLOCKERS

⑨  
LOCK JAMB

ARCHETYPE LATCH WITH  
FLUSH PULL HANDLES



DWG NO.: T3070-EX-OXXIXXX-NS0-IS-MS-STI-HF-DN-AN-S2

SHEET: 2 OF 2

CUSTOMER  
SIGNATURE

DATE: