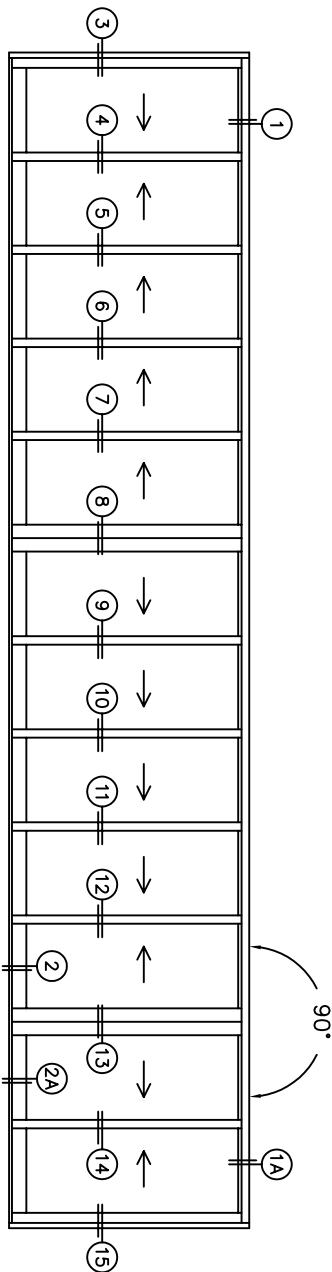


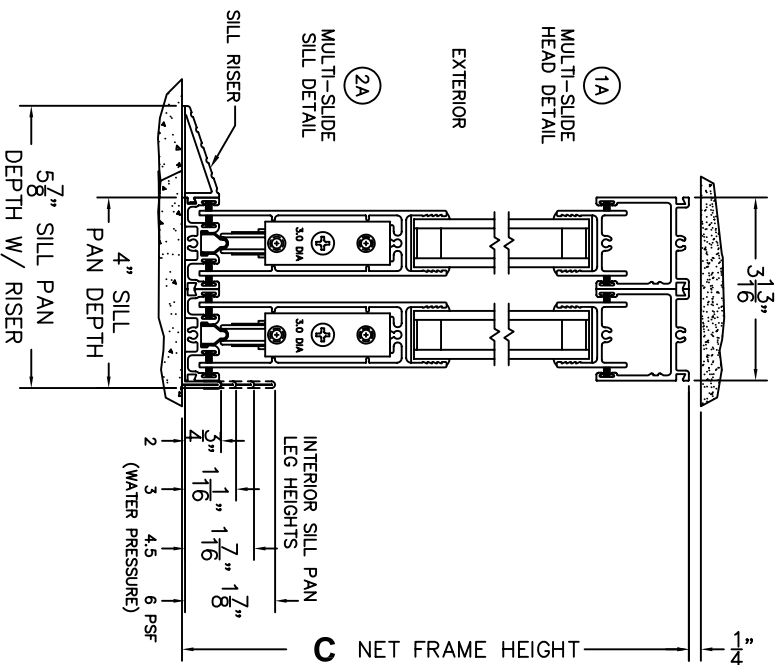
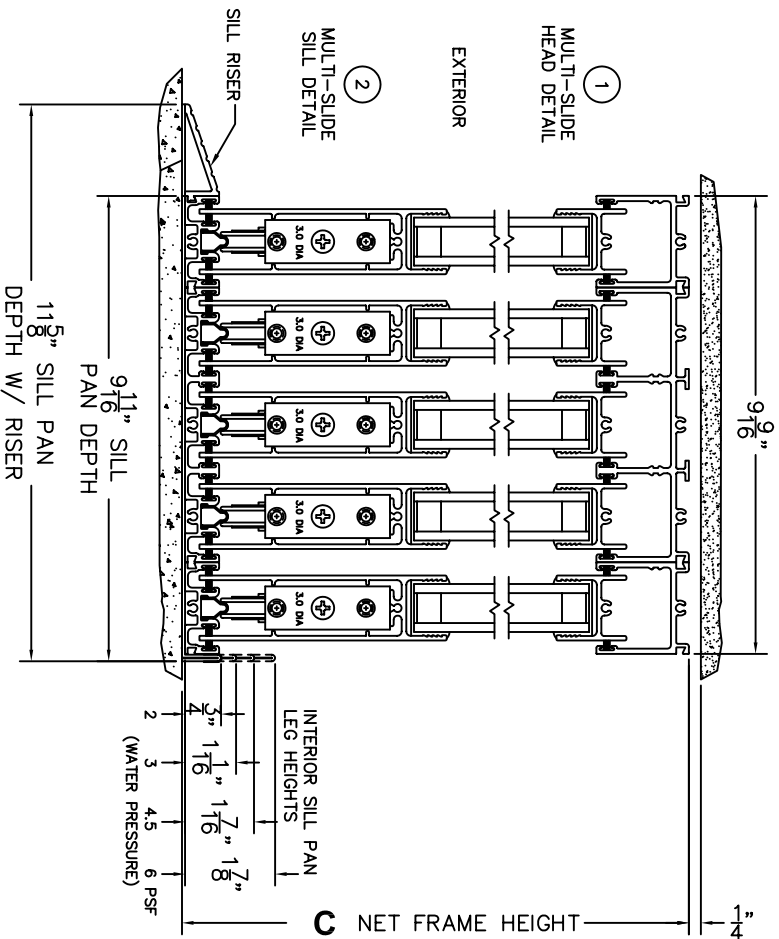
FLEETWOOD
WINDOWS & DOORS
FleetwoodUSA.com

NORWOOD 3070EX M/S
90°XXXXXXXXXXXXX STANDARD CONFIGURATION
NO SCREENS

SCALE: 1/4

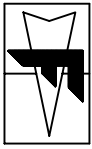


XXXXXXXXXXXXX DOOR SHOWN



ORDER NO.:	
ITEM NO.:	
REQUIRED DEALER INFO.	
A (NET FRAME WIDTH)	
B (NET FRAME WIDTH)	
C (NET FRAME HEIGHT)	
SILL PAN HEIGHT (INTERIOR LEG)	3/4", -1/16", -1/7/16" OR 1-7/8"

NOTES:



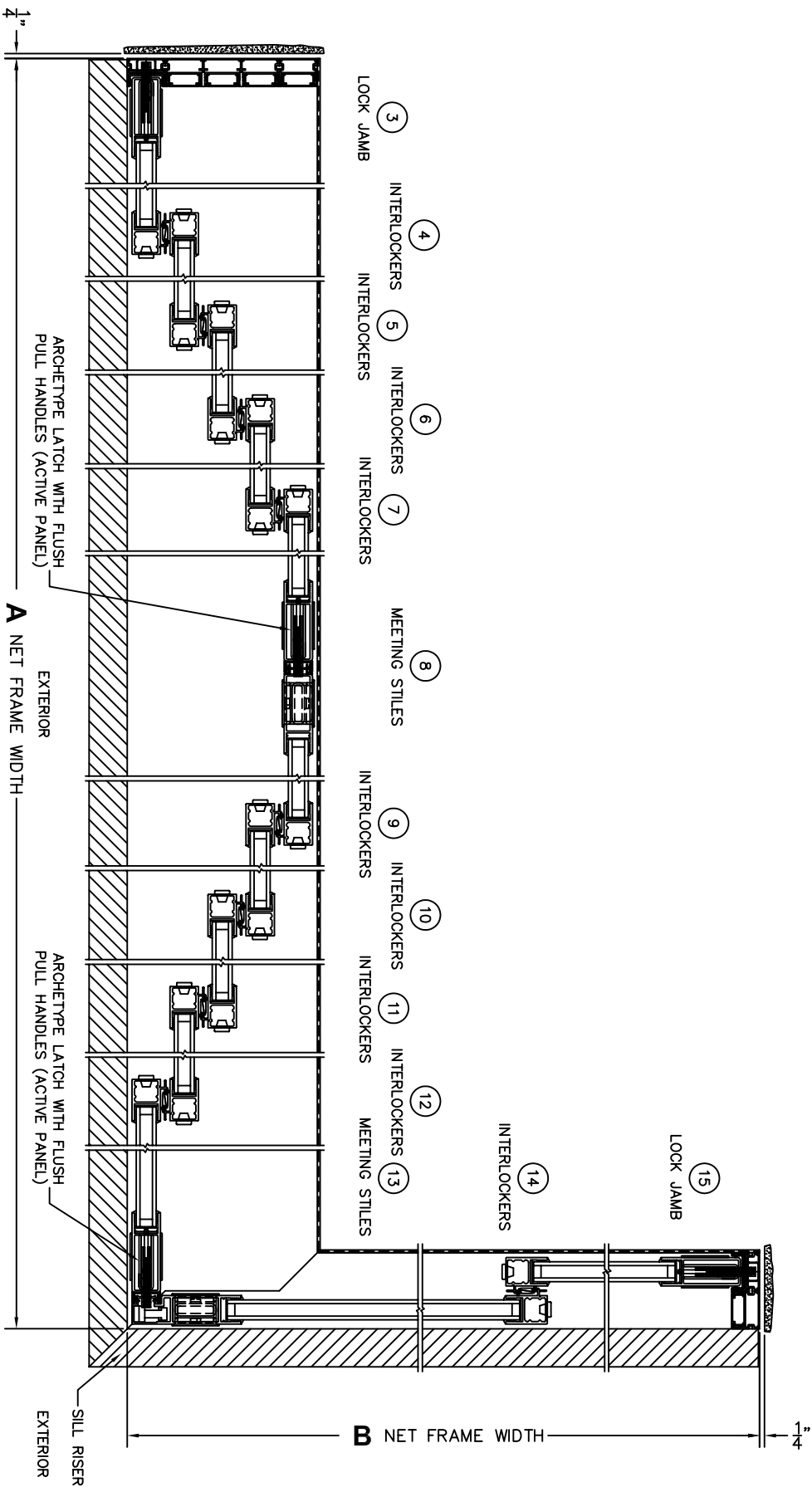
FLEETWOOD
 WINDOWS & DOORS
 FleetwoodUSA.com

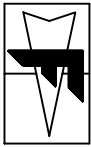
NORWOOD 3070EX M/S
 90°XXXXXXXXXXXXX STANDARD CONFIGURATION
 NO SCREENS

ORDER NO.:

ITEM NO.:

SCALE: 1/8





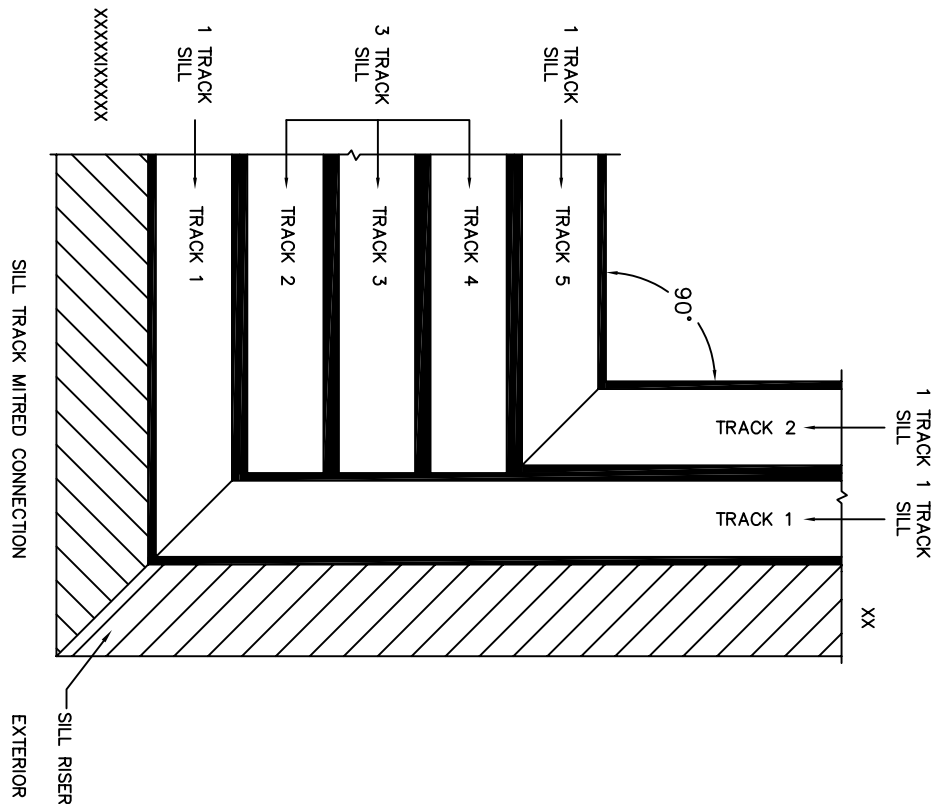
FLEETWOOD
 WINDOWS & DOORS
 FleetwoodUSA.com

NORWOOD 3070EX M/S
 90°XXXXXXXXXXXX STANDARD CONFIGURATION
 NO SCREENS

ORDER NO.:

ITEM NO.:

SCALE: 1/4



DWG NO.: 3070-EX-90XXXXXXXXXXXX-NS0-IS-M5-STI-HF-DN-AN

SHEET: 3 OF 3

CUSTOMER SIGNATURE

DATE: