



FLEETWOOD
WINDOWS & DOORS
FleetwoodUSA.com

NORWOOD 3070EX M/S
90XXXIXXXP STANDARD CONFIGURATION
NO SCREENS

ORDER NO.:

ITEM NO.:

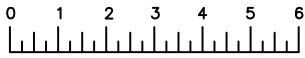
REQUIRED DEALER INFO.

| | |
|---|--|
| A (NET FRAME WIDTH) | |
| B (DAYLIGHT WIDTH) | |
| C (NET FRAME HEIGHT) | |
| SILL PAN HEIGHT(INTERIOR LEG) (3/4", 1-1/16", 1-7/16" OR 1-7/8") | |

CALCULATED VALUES (FLEETWOOD SUPPLIED)

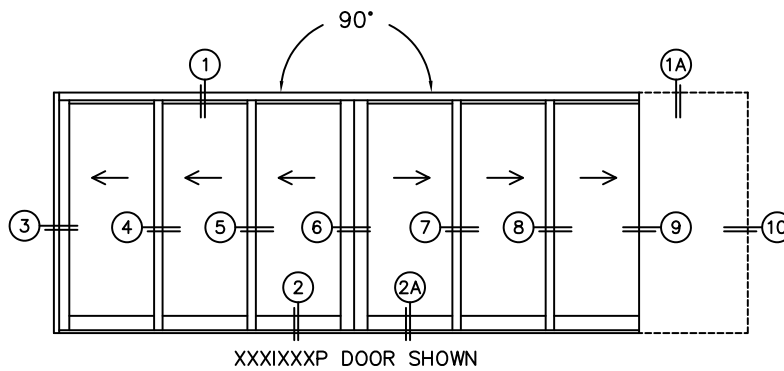
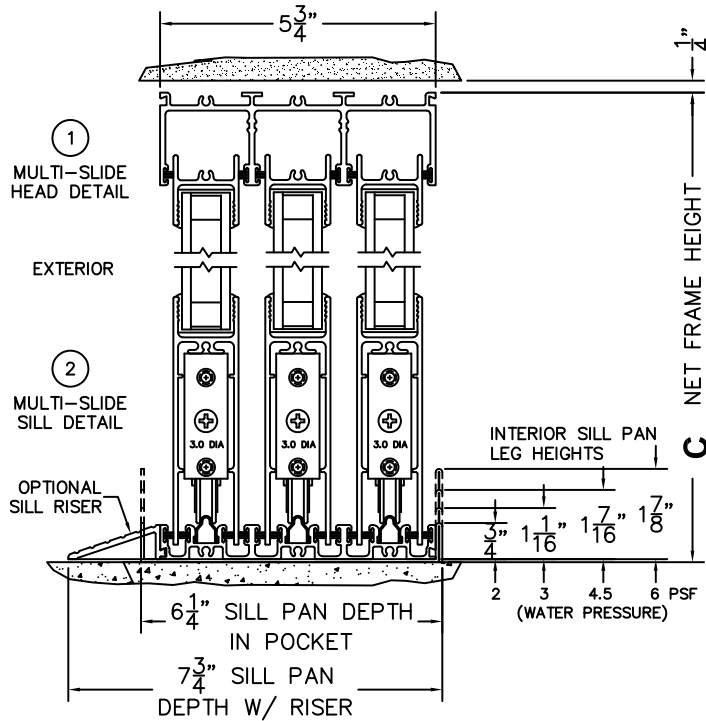
| | |
|----------------------------|--|
| D (POCKET WIDTH) | |
| E (NET FRAME WIDTH) | |

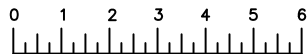
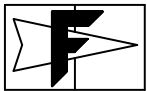
NOTES:



(USE RULER TO SCALE DIMENSIONS IN INCHES)

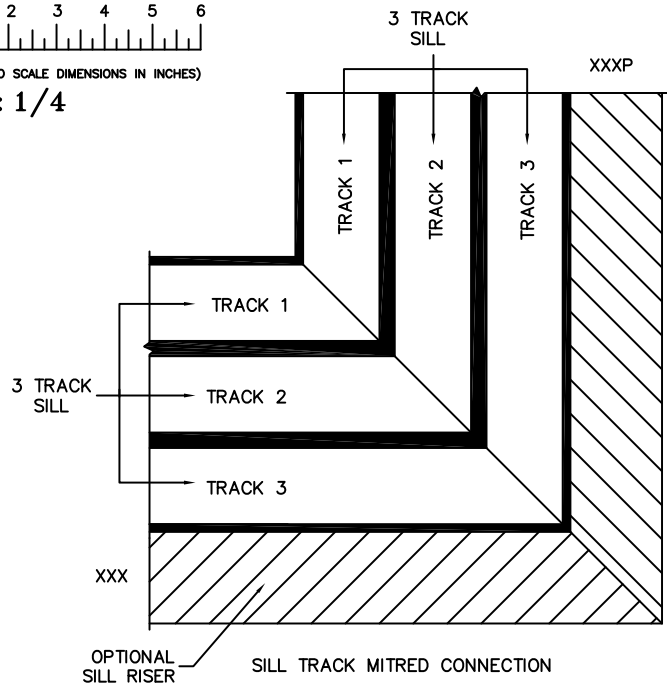
SCALE: 1/4





(USE RULER TO SCALE DIMENSIONS IN INCHES)

SCALE: 1/4



③ LOCK JAMB

④ INTERLOCKERS

⑤ INTERLOCKERS

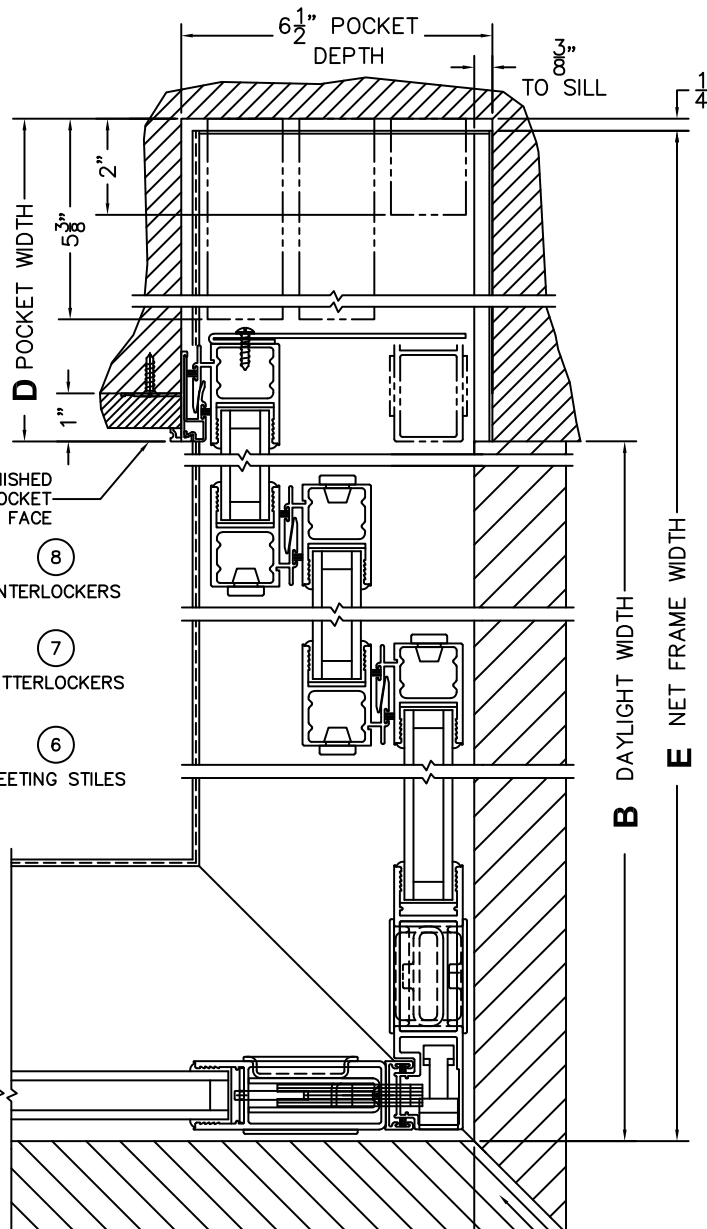
⑩ POCKET JAMB

⑨ POCKET INTERLOCKERS

*FINISHED POCKET FACE
⑧ INTERLOCKERS

⑦ INTERLOCKERS

⑥ MEETING STILES



B DAYLIGHT WIDTH
E NET FRAME WIDTH

1/4"

EXTERIOR

A NET FRAME WIDTH

OPTIONAL SILL RISER