

**FLEETWOOD**  
WINDOWS & DOORS  
FleetwoodUSA.com

**NORWOOD 3070EX M/S**  
90°PXXXXXXIXP CUSTOM CONFIGURATION  
NO SCREENS

ORDER NO.:

ITEM NO.:

SCALE: 1/4

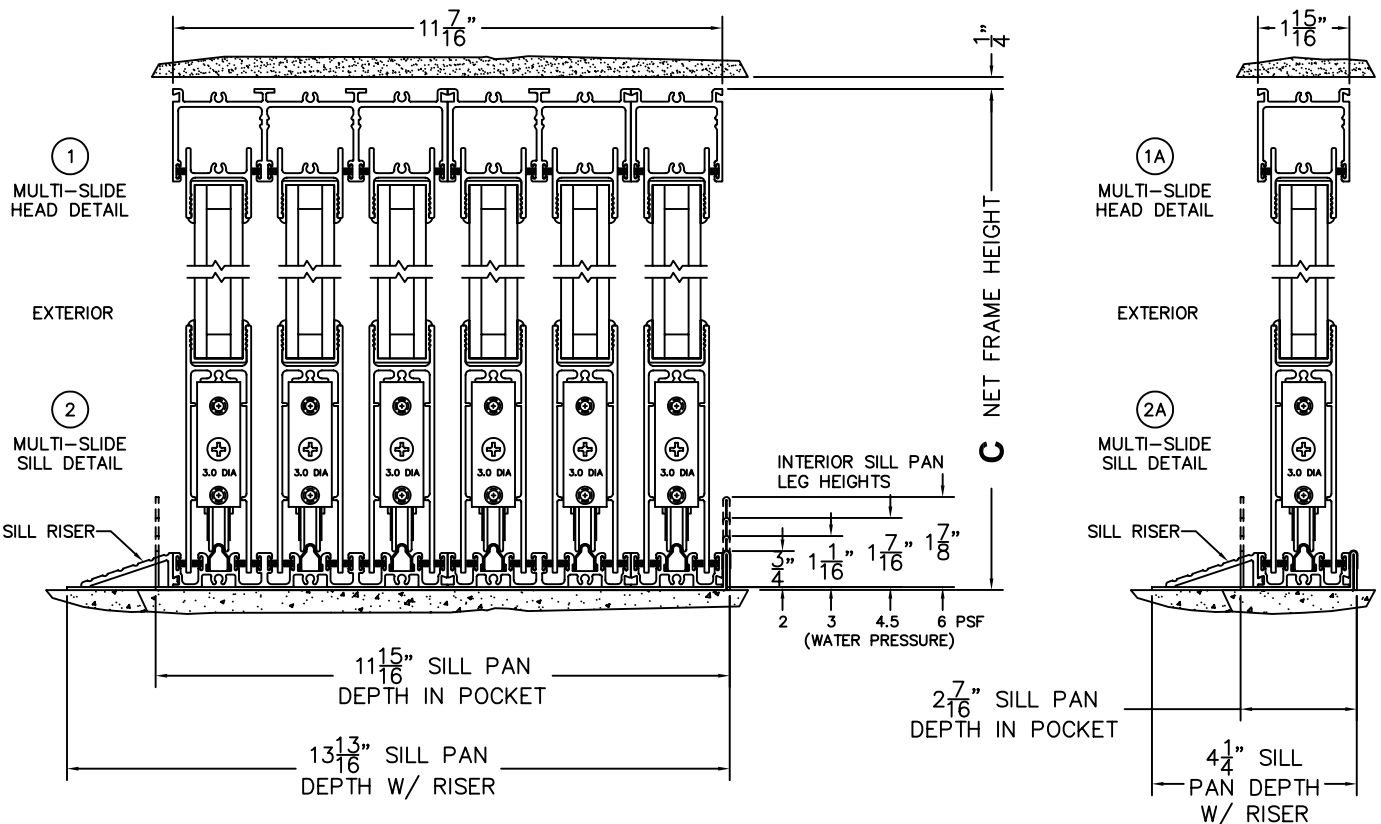
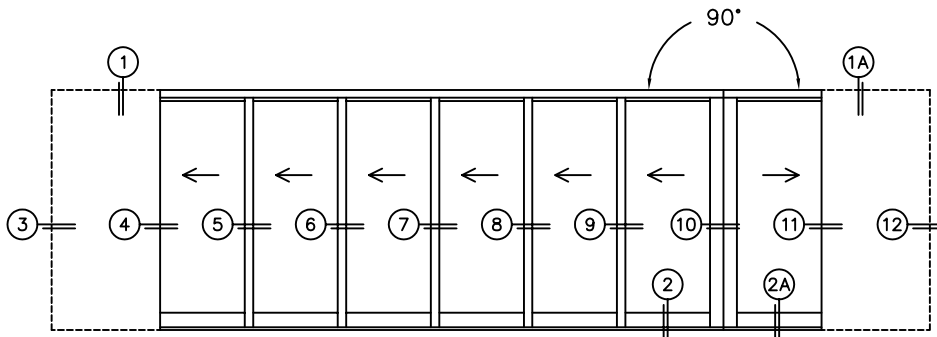
REQUIRED DEALER INFO.

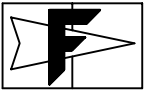
|   |  |
|---|--|
| <b>A</b> (DAYLIGHT WIDTH)   |  |
| <b>B</b> (DAYLIGHT WIDTH)   |  |
| <b>C</b> (NET FRAME HEIGHT)   |  |
| SILL PAN HEIGHT(INTERIOR LEG)<br>(3/4", 1-1/16", 1-7/16" OR 1-7/8") |  |

CALCULATED VALUES (FLEETWOOD SUPPLIED)

|                            |  |
|----------------------------|--|
| <b>D</b> (POCKET WIDTH)    |  |
| <b>E</b> (NET FRAME WIDTH) |  |
| <b>F</b> (POCKET WIDTH)    |  |
| <b>G</b> (NET FRAME WIDTH) |  |

NOTES:





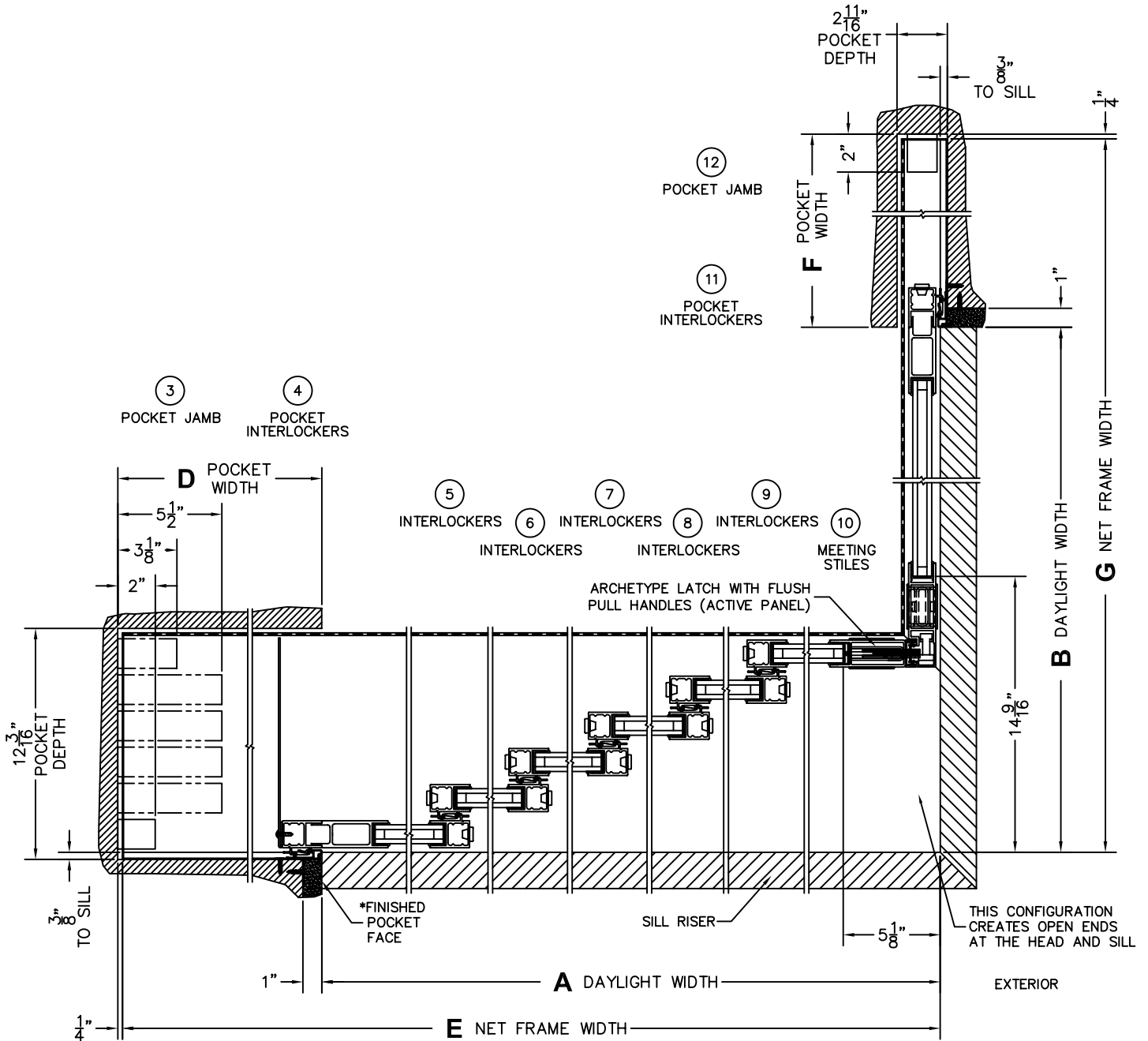
**FLEETWOOD**  
WINDOWS & DOORS  
FleetwoodUSA.com

**NORWOOD 3070EX M/S**  
90°PXXXXXXIXP CUSTOM CONFIGURATION  
NO SCREENS

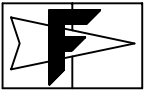
ORDER NO.:

ITEM NO.:

SCALE: 1/8



\*CAUTION: WHEN CONSTRUCTING POCKET NOTE THAT DAYLIGHT WIDTH DOES NOT INCLUDE 1" SET BACK FOR POST INTERLOCKER.



**FLEETWOOD**  
WINDOWS & DOORS  
FleetwoodUSA.com

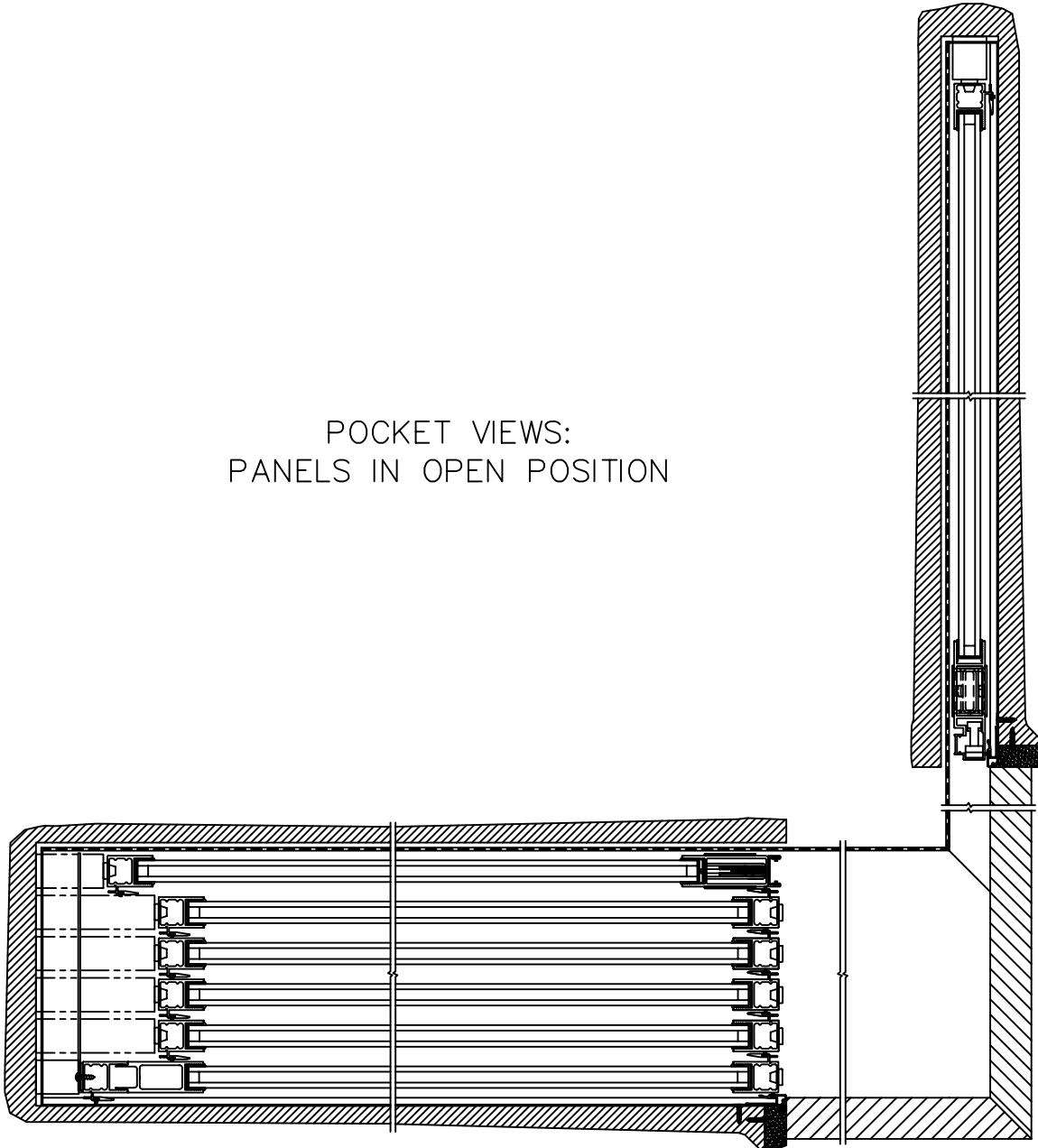
**NORWOOD 3070EX M/S**  
90°PXXXXXXIXP CUSTOM CONFIGURATION  
NO SCREENS

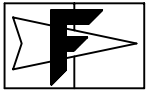
ORDER NO.:

ITEM NO.:

SCALE: 1/8

POCKET VIEWS:  
PANELS IN OPEN POSITION





**FLEETWOOD**  
WINDOWS & DOORS  
FleetwoodUSA.com

**NORWOOD 3070EX M/S**  
90°PXXXXXXXP CUSTOM CONFIGURATION  
NO SCREENS

ORDER NO.:

ITEM NO.:

SCALE: 1/4

