

**FLEETWOOD**  
WINDOWS & DOORS  
FleetwoodUSA.com

**NORWOOD 3070EX M/S**  
90°PXXIXXXXX STANDARD CONFIG.  
NO SCREENS

ORDER NO.:

ITEM NO.:

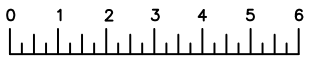
REQUIRED DEALER INFO.

|                               |                                  |
|-------------------------------|----------------------------------|
| <b>A</b> (NET FRAME WIDTH)    |                                  |
| <b>B</b> (DAYLIGHT WIDTH)     |                                  |
| <b>C</b> (NET FRAME HEIGHT)   |                                  |
| SILL PAN HEIGHT(INTERIOR LEG) | 3/4", 1-1/16", 1-7/16" OR 1-7/8" |

CALCULATED VALUES (FLEETWOOD SUPPLIED)

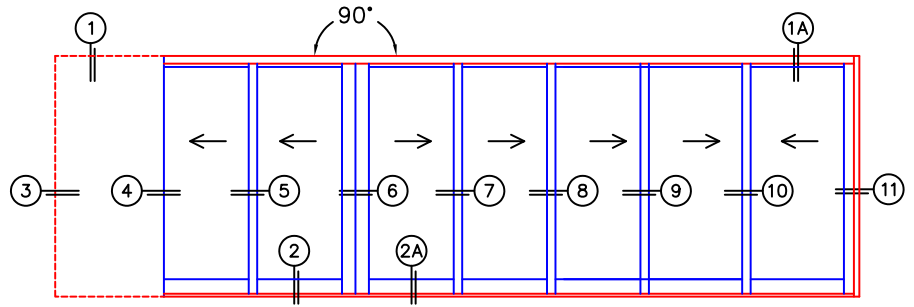
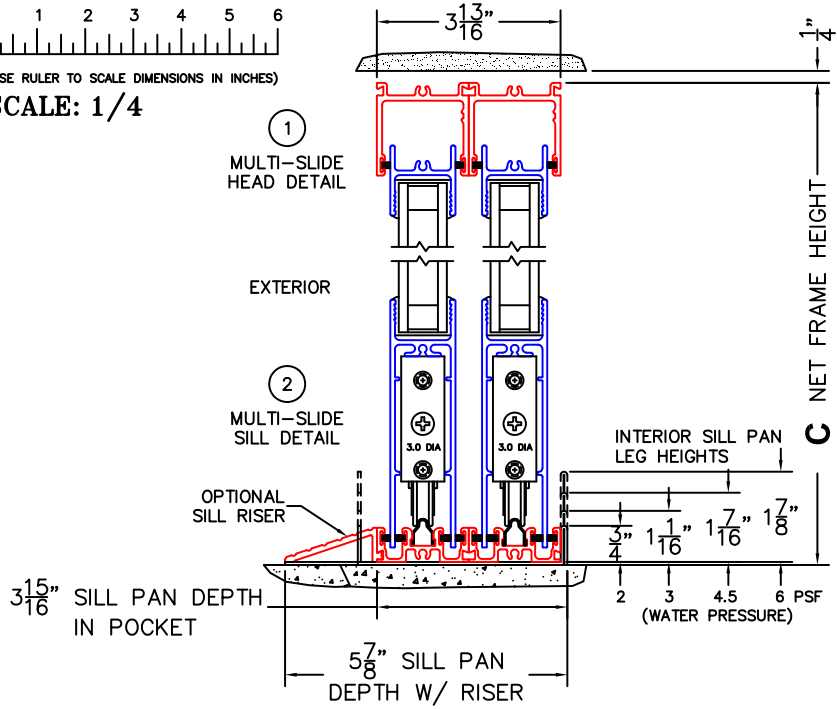
|                            |  |
|----------------------------|--|
| <b>D</b> (POCKET WIDTH)    |  |
| <b>E</b> (NET FRAME WIDTH) |  |

NOTES:

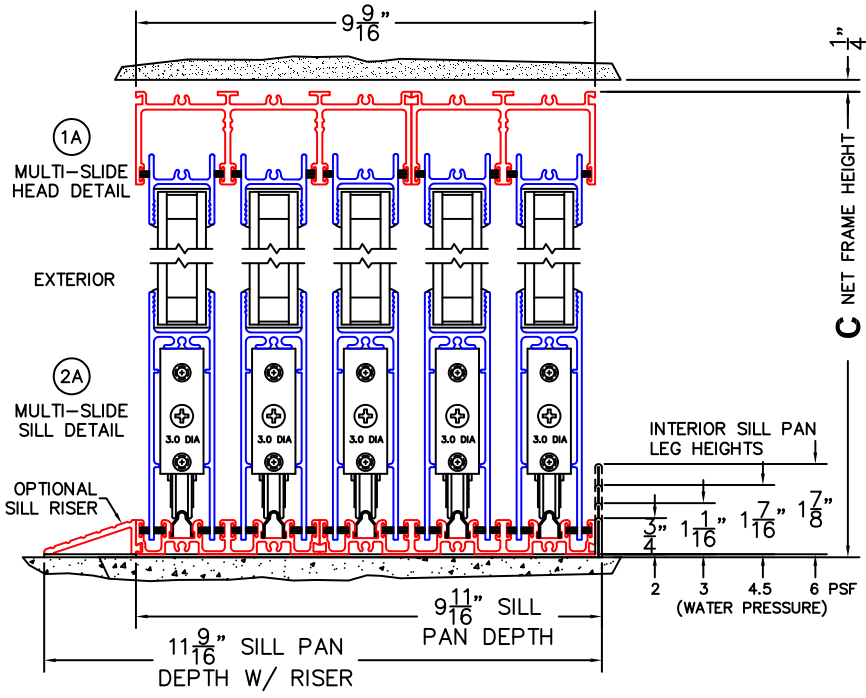


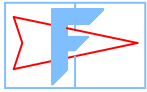
(USE RULER TO SCALE DIMENSIONS IN INCHES)

SCALE: 1/4



PXXIXXXXX DOOR SHOWN



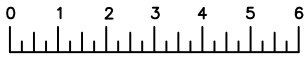


**FLEETWOOD**  
WINDOWS & DOORS  
FleetwoodUSA.com

**NORWOOD 3070EX M/S**  
90°PXXIXXXXX STANDARD CONFIG.  
NO SCREENS

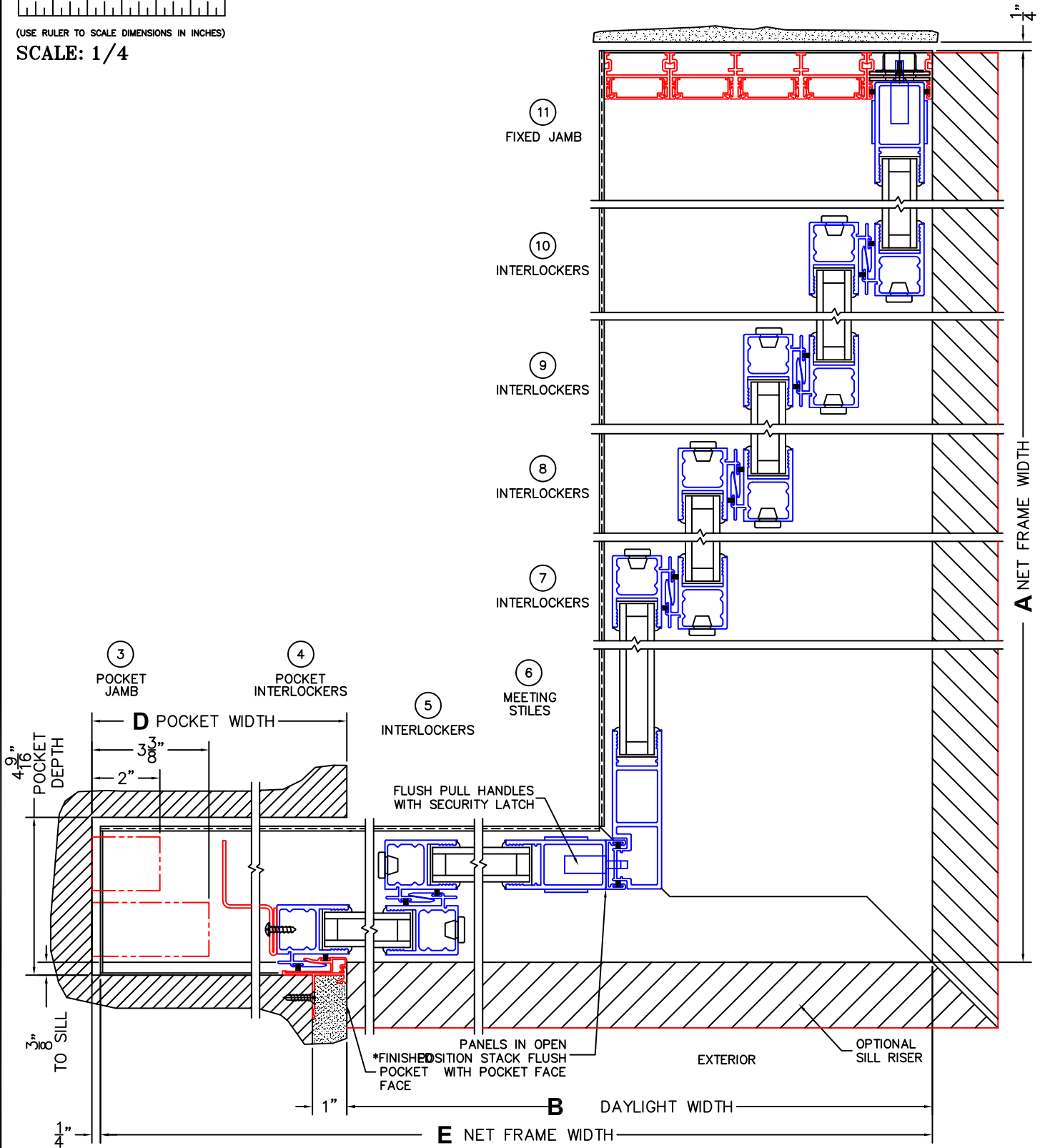
ORDER NO.:

ITEM NO.:

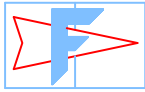


(USE RULER TO SCALE DIMENSIONS IN INCHES)

SCALE: 1/4



\*CAUTION: WHEN CONSTRUCTING POCKET NOTE THAT DAYLIGHT WIDTH DOES NOT INCLUDE 1" SET BACK FOR POST INTERLOCKER.

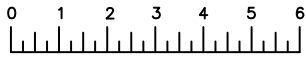


**FLEETWOOD**  
WINDOWS & DOORS  
FleetwoodUSA.com

**NORWOOD 3070EX M/S**  
**90°PXXIXXXXX STANDARD CONFIG.**  
**NO SCREENS**

ORDER NO.:

ITEM NO.:



(USE RULER TO SCALE DIMENSIONS IN INCHES)

**SCALE: 1/4**

