



**FLEETWOOD**  
WINDOWS & DOORS  
FleetwoodUSA.com

**NORWOOD 3050 M/S**  
PXIXP CUSTOM CONFIGURATION  
SCREENS ONLY HIDDEN TRACK

ORDER NO.:

ITEM NO.:

REQUIRED DEALER INFO.

**A**(DAYLIGHT WIDTH)

**B**(NET FRAME HEIGHT)

CALCULATED VALUES (FLEETWOOD SUPPLIED)

**C**(POCKET WIDTH)

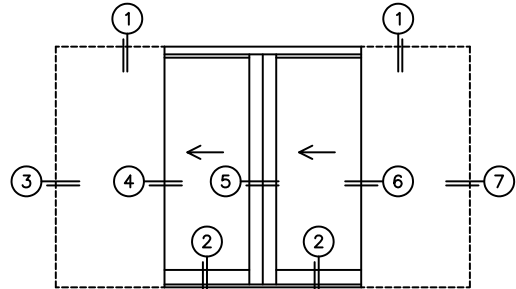
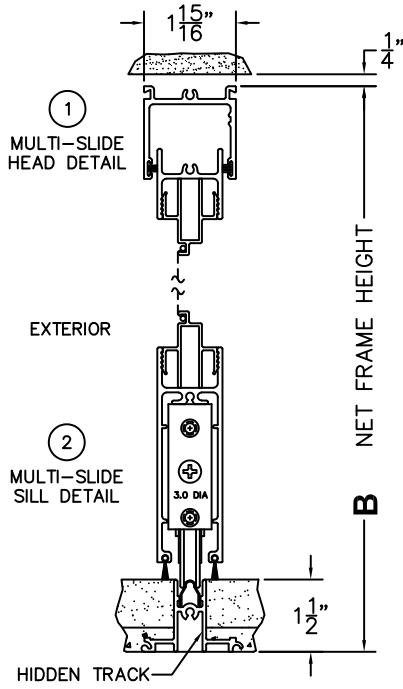
**D**(NET FRAME WIDTH)

NOTES:

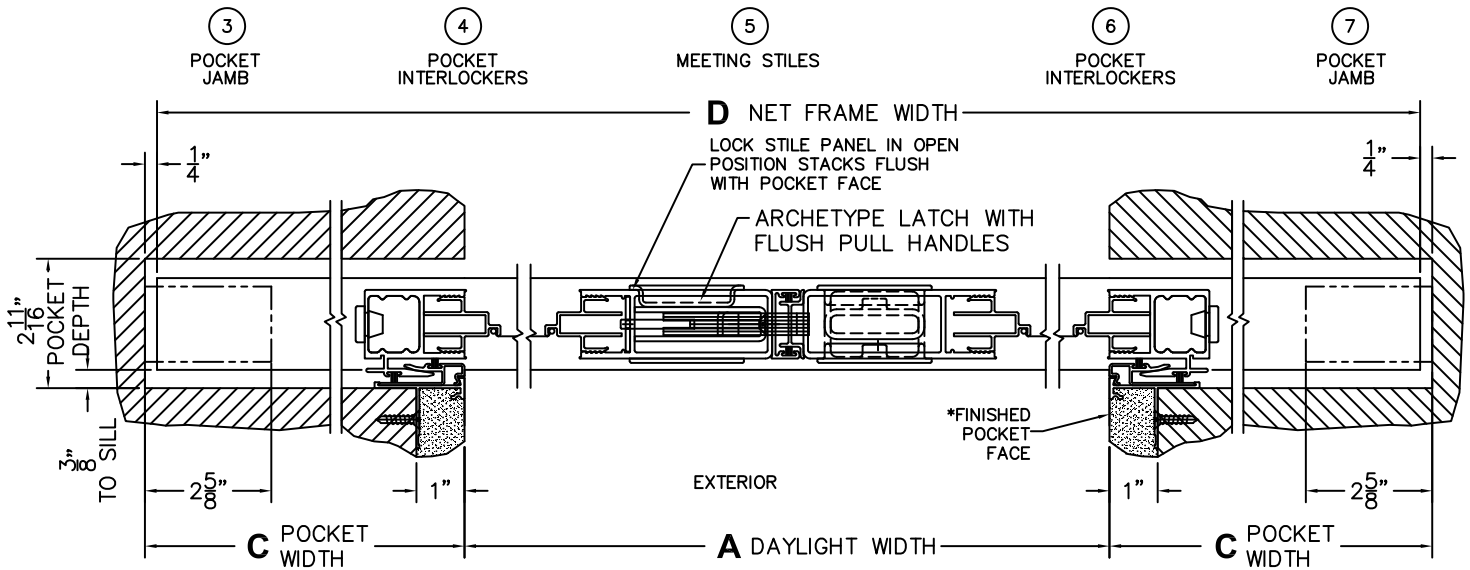


(USE RULER TO SCALE DIMENSIONS IN INCHES)

SCALE: 1/4



PXIXP DOOR SHOWN



\*CAUTION: WHEN CONSTRUCTING POCKET  
NOTE THAT DAYLIGHT WIDTH DOES NOT  
INCLUDE 1" SET BACK FOR POST INTERLOCKER.