



FLEETWOOD
WINDOWS & DOORS
FleetwoodUSA.com

NORWOOD 3050
90°PXXXXIXXP STANDARD CONFIGURATION
NO SCREENS

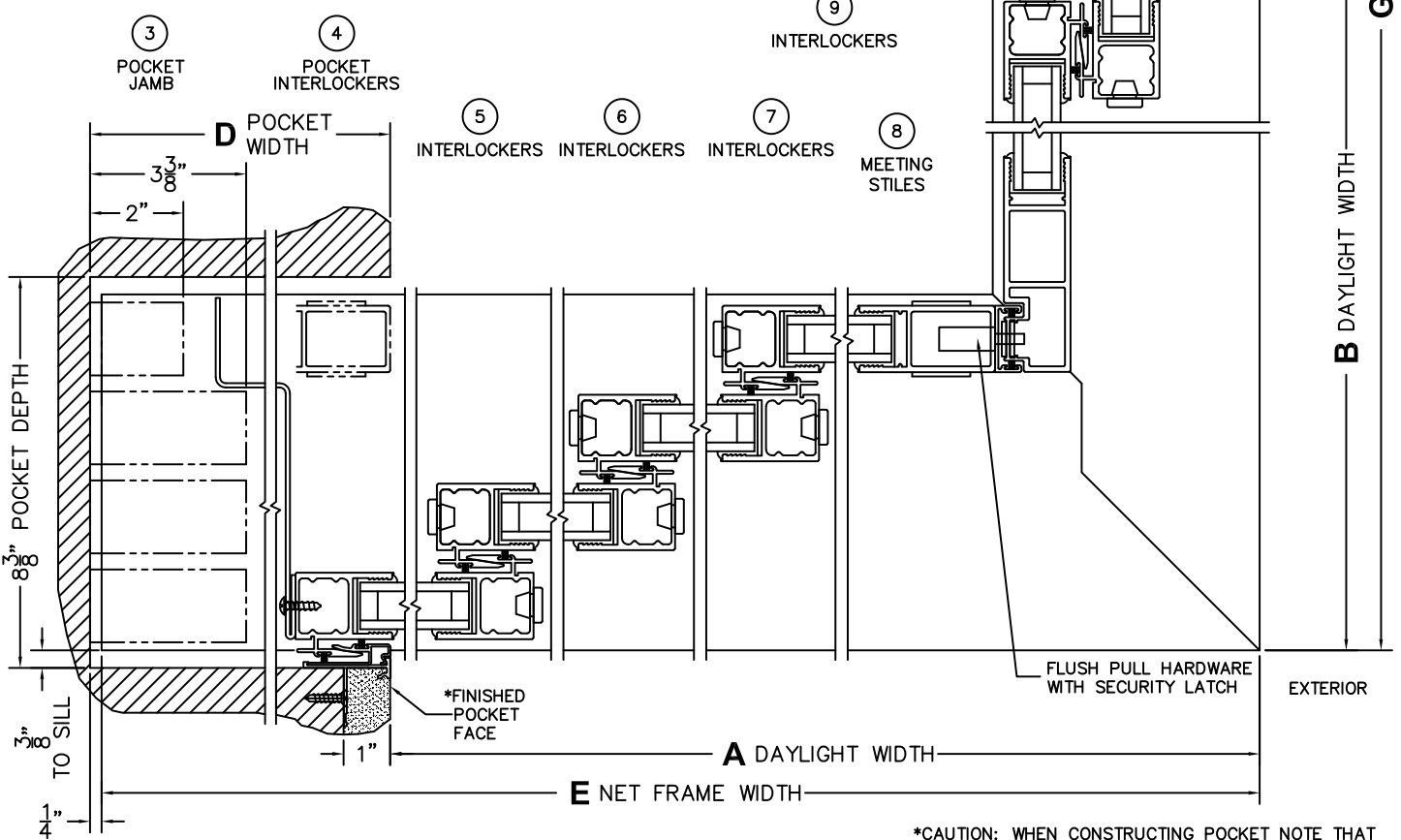
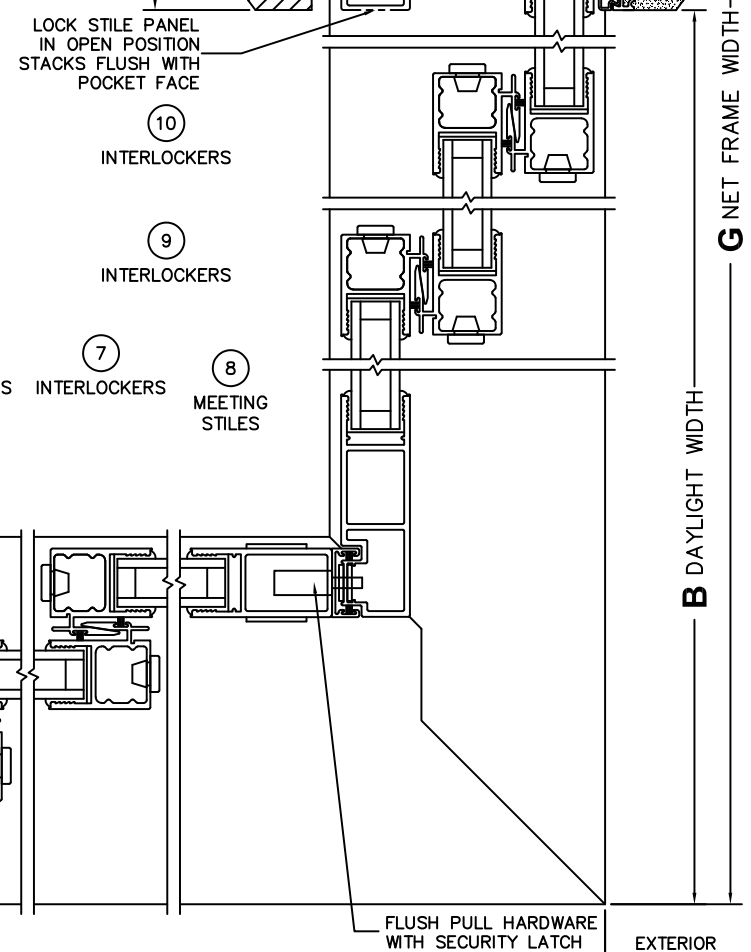
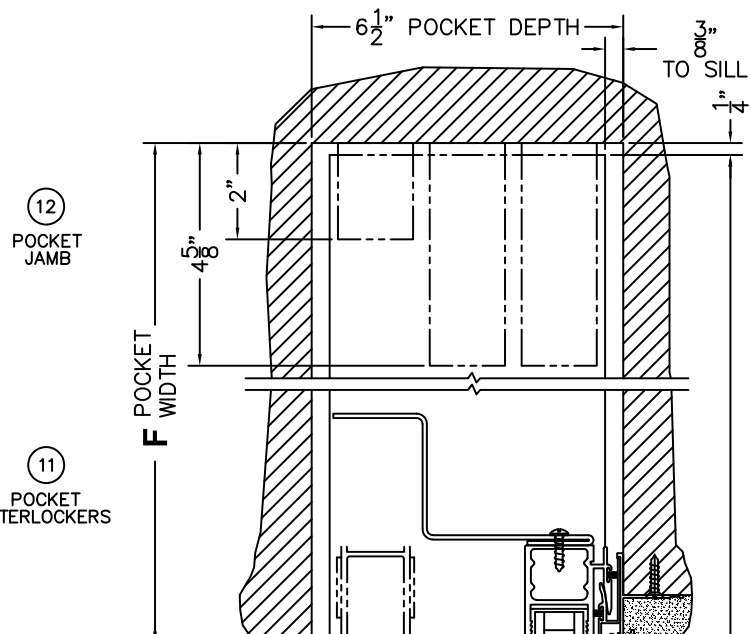
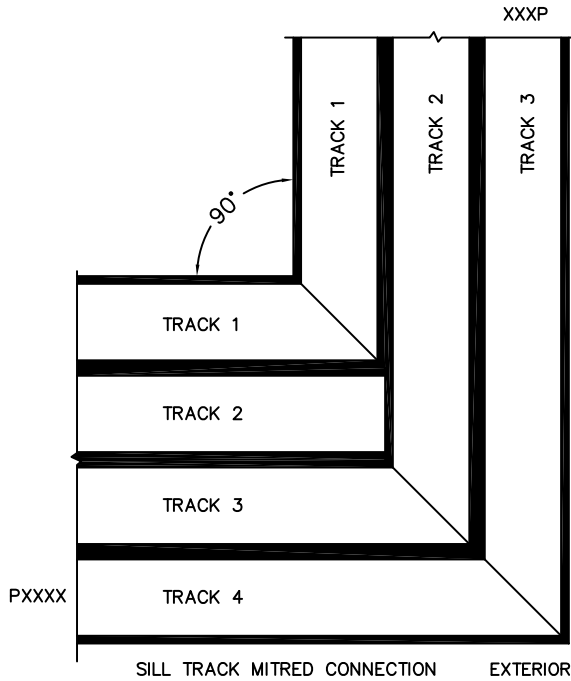
ORDER NO.:

ITEM NO.:



(USE RULER TO SCALE DIMENSIONS IN INCHES)

SCALE: 1/4



*CAUTION: WHEN CONSTRUCTING POCKET NOTE THAT DAYLIGHT WIDTH DOES NOT INCLUDE 1" SET BACK FOR POST INTERLOCKER.



FLEETWOOD
WINDOWS & DOORS
FleetwoodUSA.com

NORWOOD 3050
90°PXXXXIXXXP STANDARD CONFIGURATION
NO SCREENS

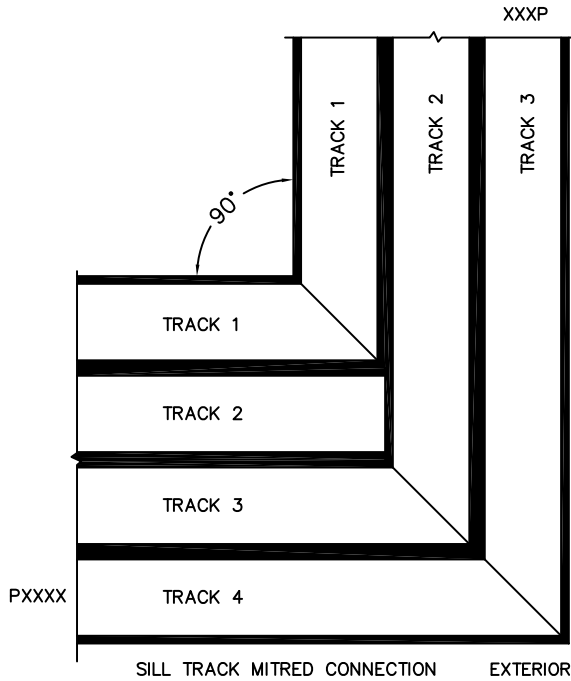
ORDER NO.:

ITEM NO.:



(USE RULER TO SCALE DIMENSIONS IN INCHES)

SCALE: 1/4



12
POCKET
JAMB

11
POCKET
INTERLOCKERS

LOCK STILE PANEL
IN OPEN POSITION
STACKS FLUSH WITH
POCKET FACE

10
INTERLOCKERS

9
INTERLOCKERS

3
POCKET
JAMB

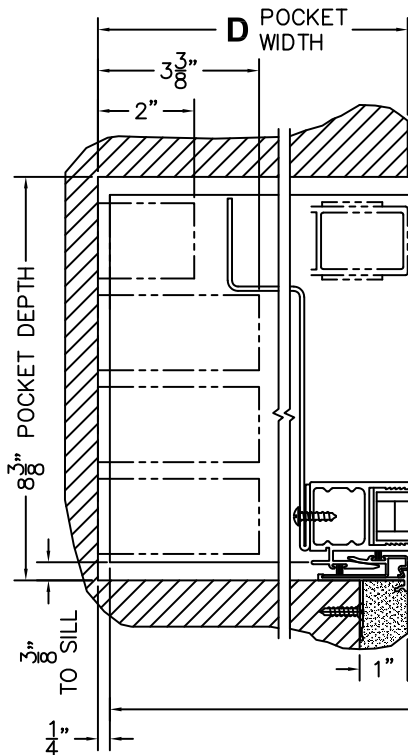
4
POCKET
INTERLOCKERS

5
INTERLOCKERS

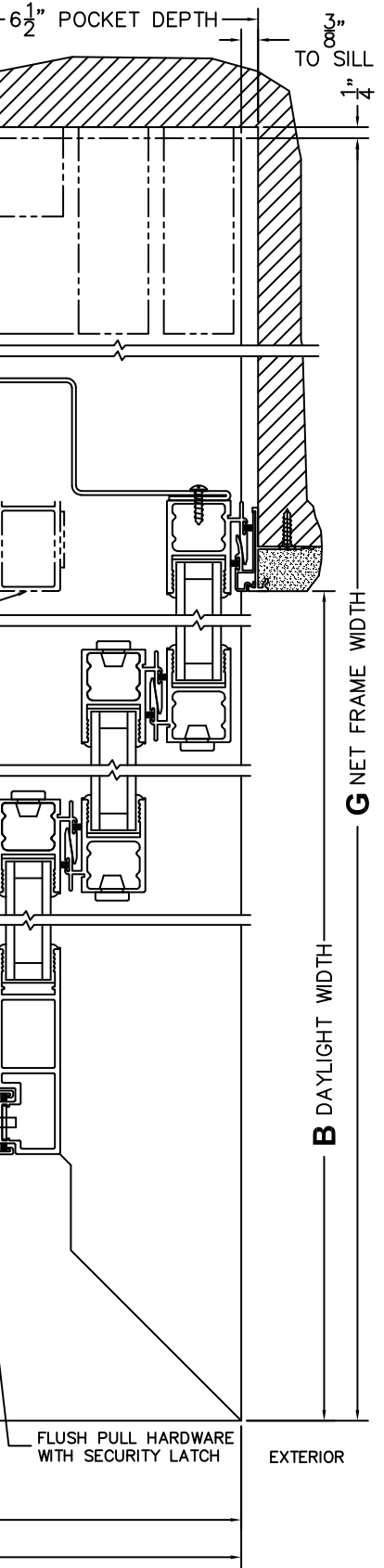
6
INTERLOCKERS

7
INTERLOCKERS

8
MEETING
STILES



A DAYLIGHT WIDTH
E NET FRAME WIDTH



B DAYLIGHT WIDTH
G NET FRAME WIDTH

FLUSH PULL HARDWARE
WITH SECURITY LATCH

EXTERIOR

*CAUTION: WHEN CONSTRUCTING POCKET NOTE THAT DAYLIGHT WIDTH DOES NOT INCLUDE 1" SET BACK FOR POST INTERLOCKER.