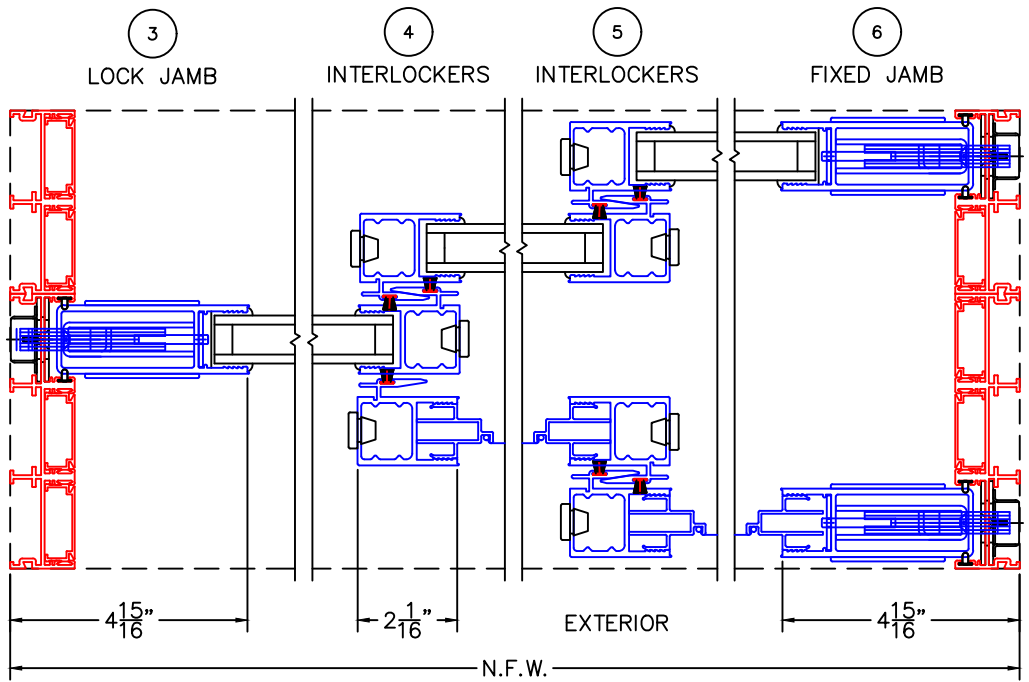
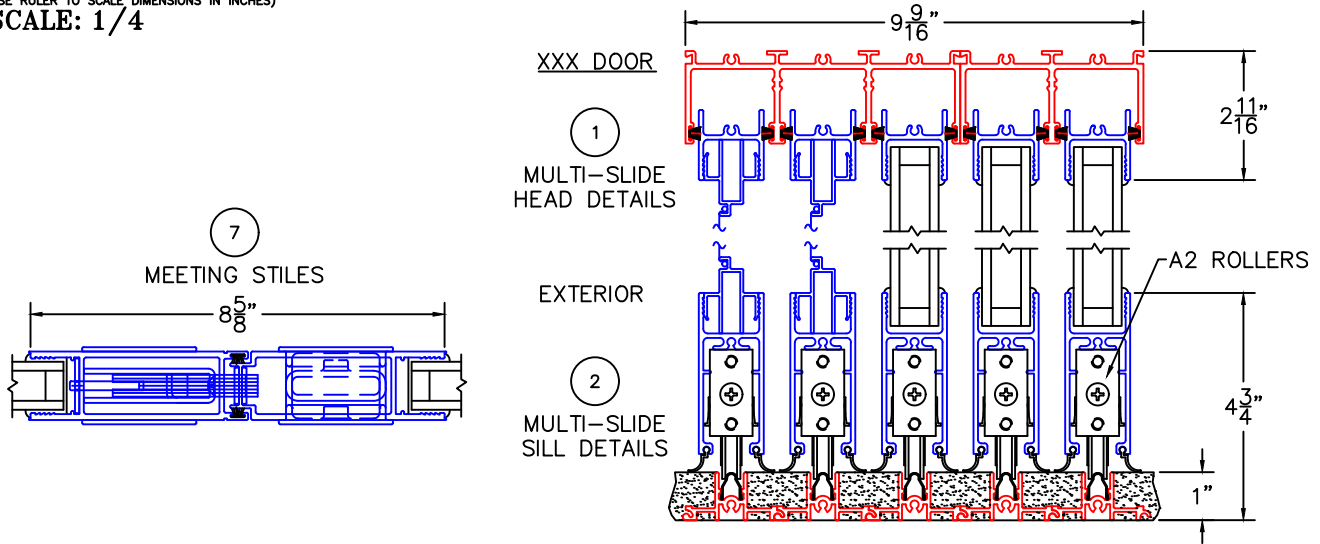


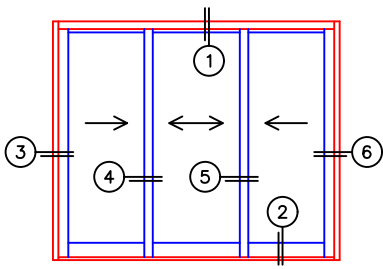


(USE RULER TO SCALE DIMENSIONS IN INCHES)
SCALE: 1/4

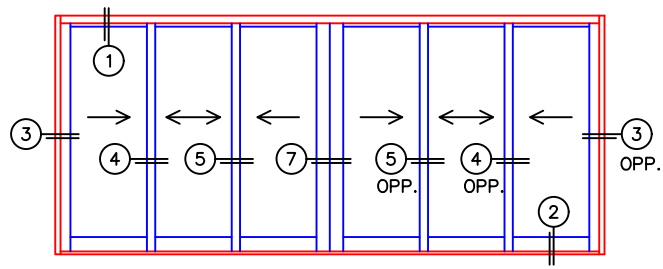
MULTI-SLIDE DOOR DETAILS WITH SCREENS



NOTE: CENTERLINES ARE NOT DIVIDED EQUALLY; CONFIRM CENTERLINES WHEN REQUIRED

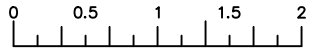


XXX DOOR



XXXIXXX DOOR

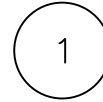
-GLASS PENETRATION: 11/16"
-FOR ADDITIONAL OPTIONS AND UPGRADES
SEE DRAWINGS 3050-08, 3050-09 & 3050-10.



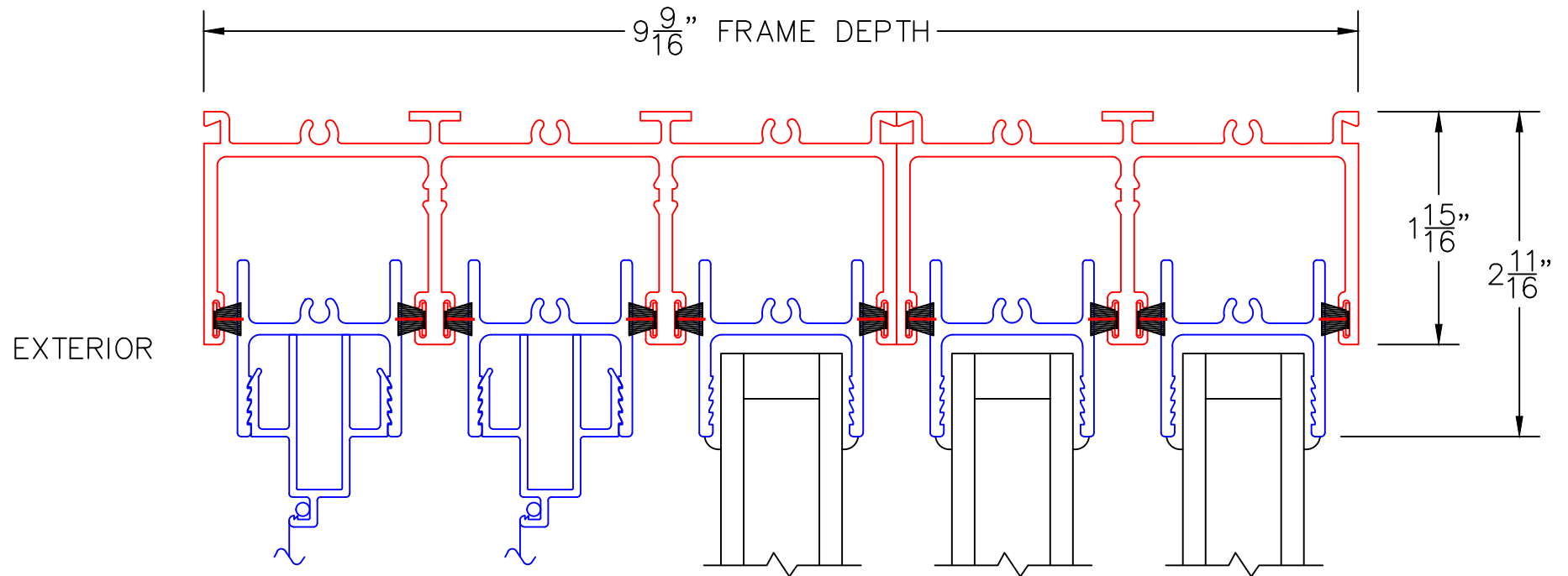
(USE RULER TO SCALE DIMENSIONS IN INCHES)

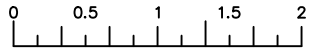
SCALE: 3/4

XXX DOOR



MULTI-SLIDE HEAD DETAILS





(USE RULER TO SCALE DIMENSIONS IN INCHES)

SCALE: 3/4

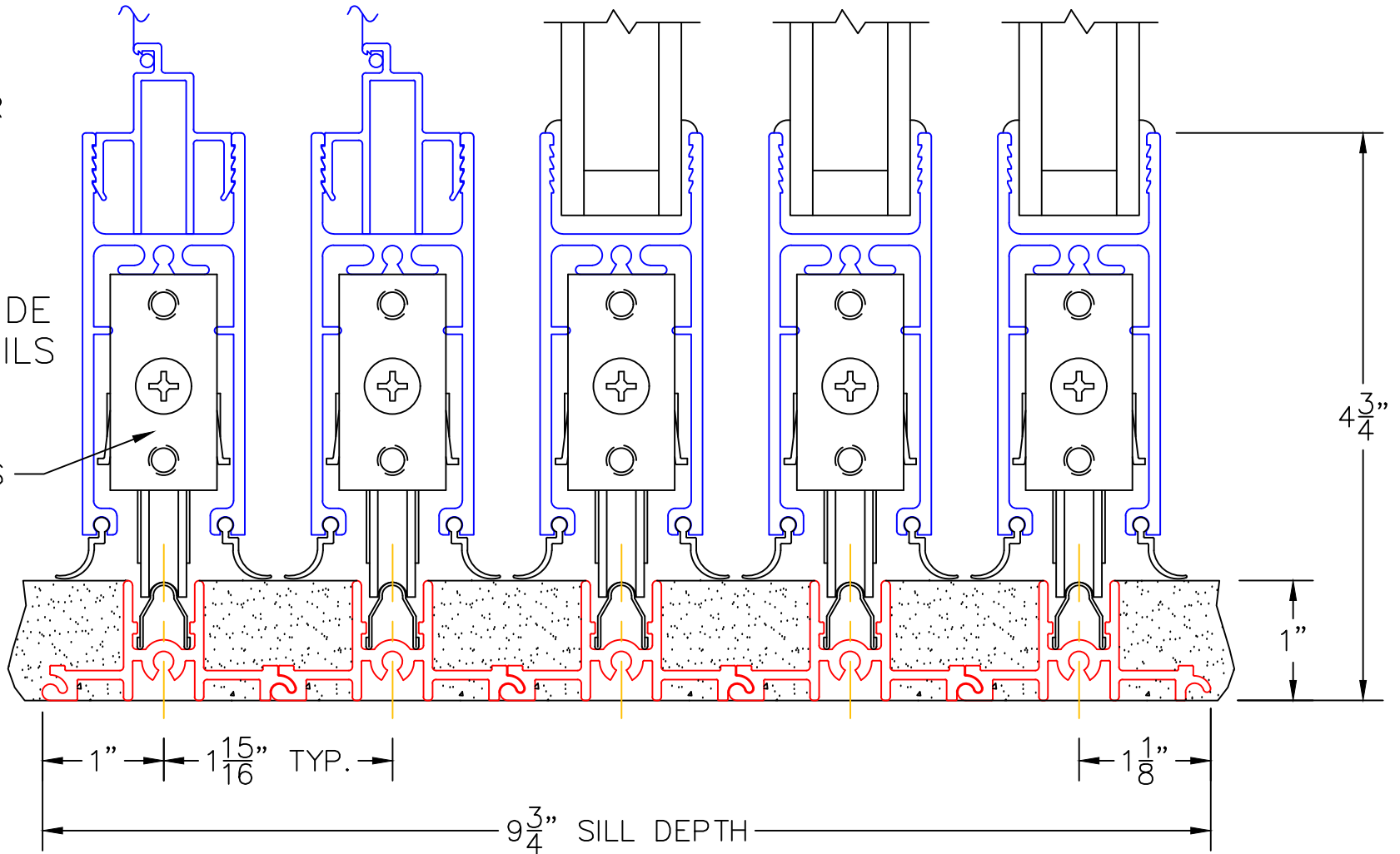
XXX DOOR

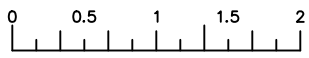
EXTERIOR

2

MULTI-SLIDE
SILL DETAILS

A2 ROLLERS

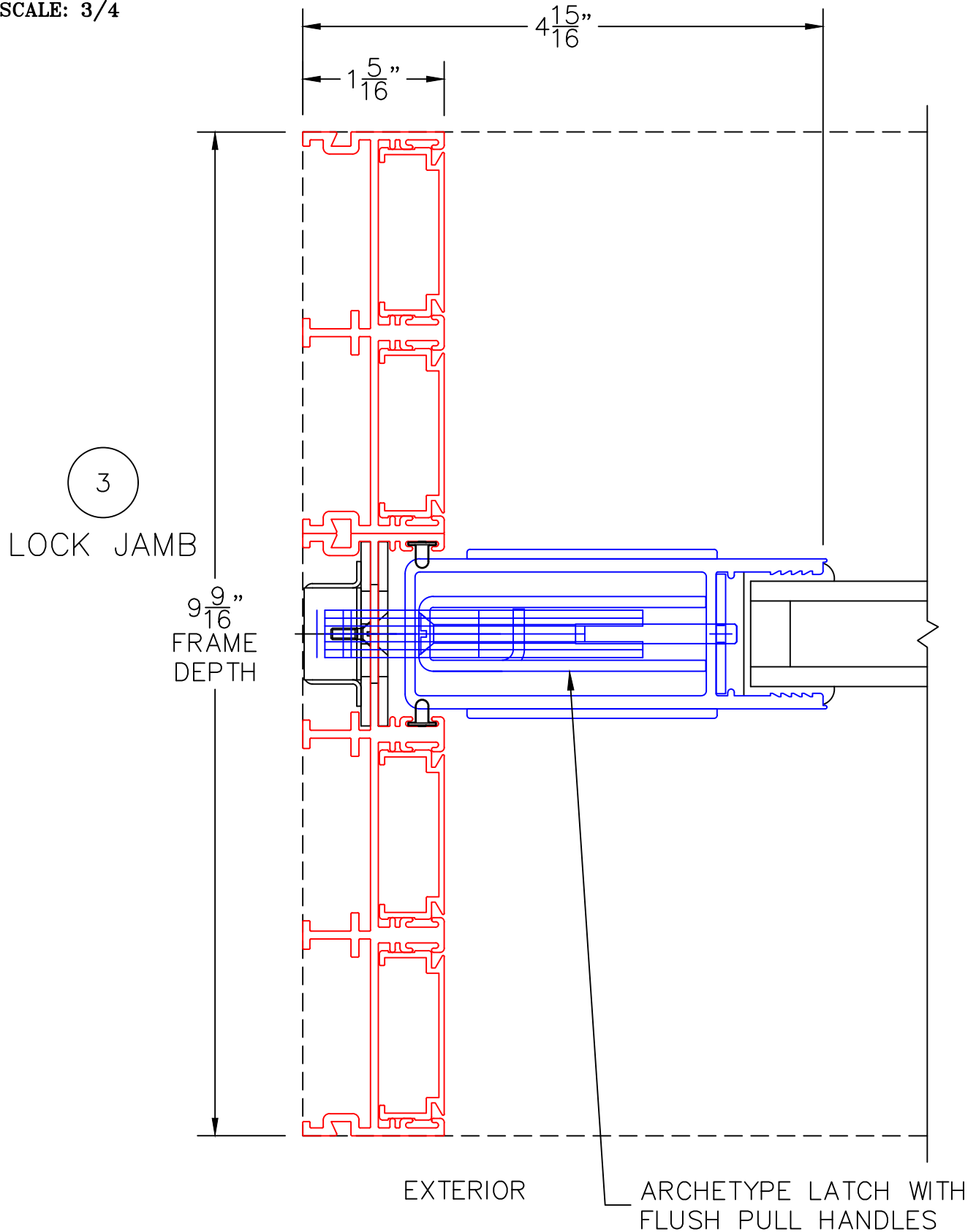




(USE RULER TO SCALE DIMENSIONS IN INCHES)

SCALE: 3/4

XXX DOOR HIDDEN TRACK



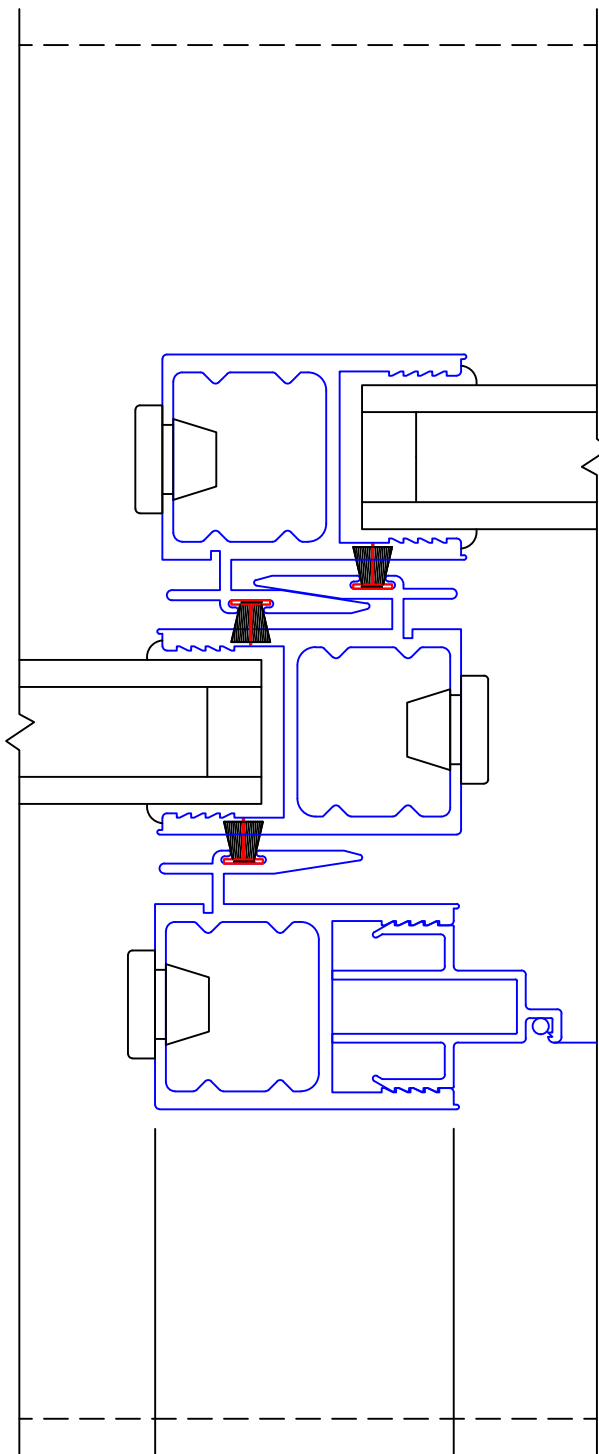


(USE RULER TO SCALE DIMENSIONS IN INCHES)

SCALE: 3/4

XXX DOOR
HIDDEN TRACK

4
INTERLOCKERS



2 1/16"

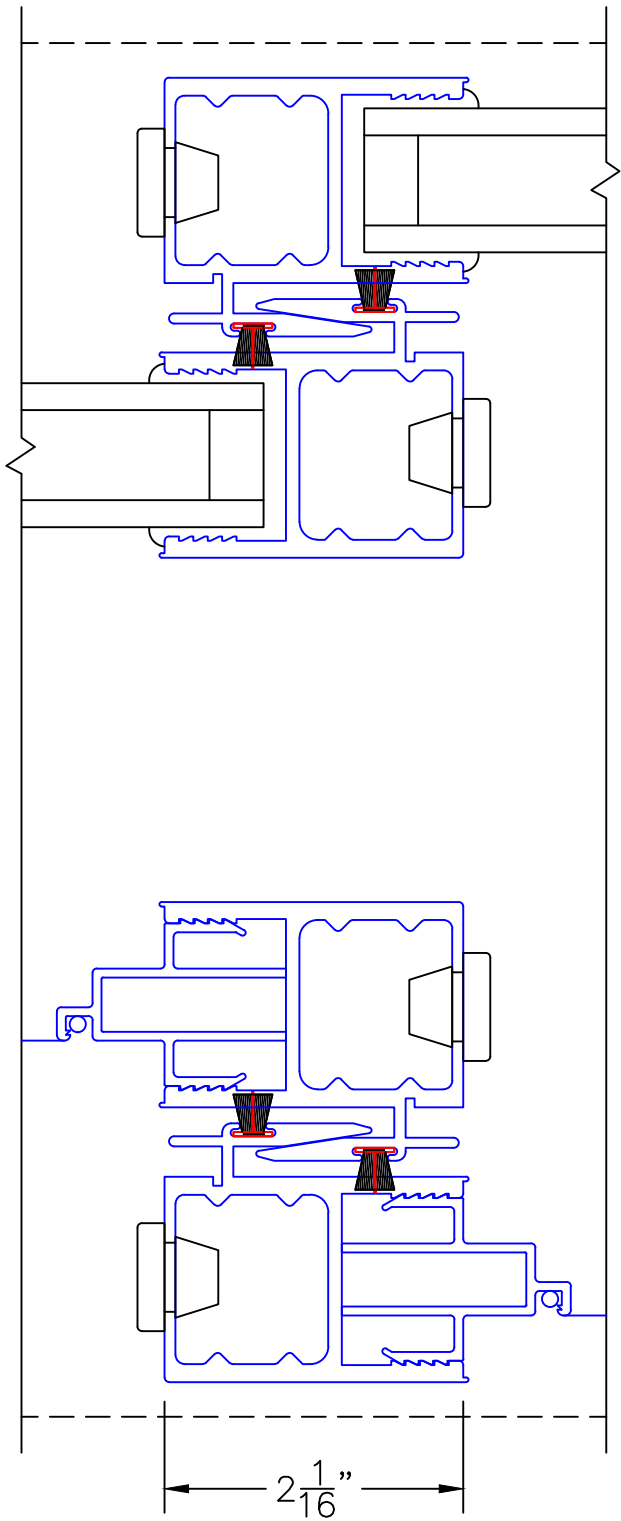
EXTERIOR



(USE RULER TO SCALE DIMENSIONS IN INCHES)

SCALE: 3/4

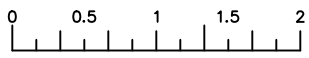
XXX DOOR HIDDEN TRACK



5

INTERLOCKERS

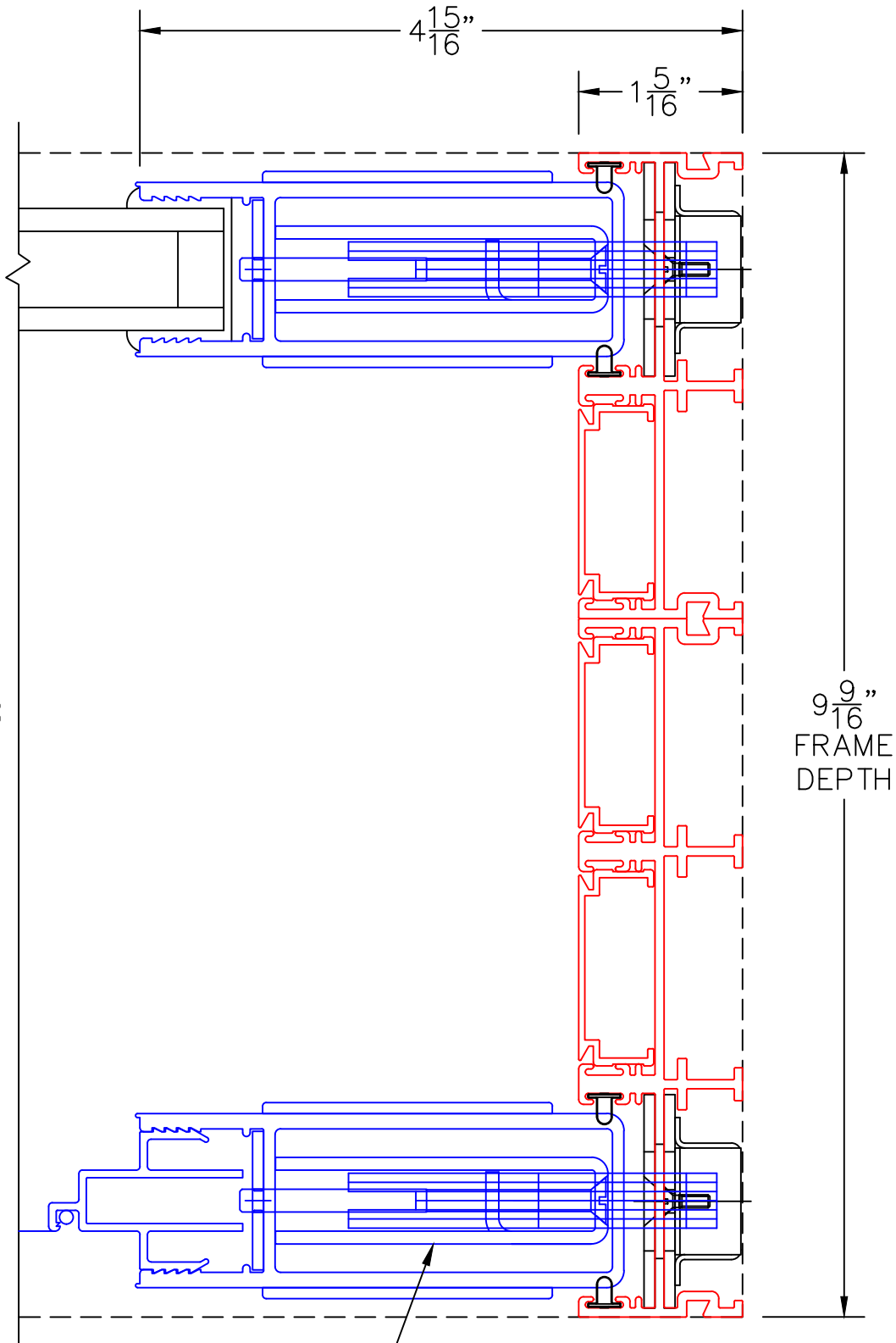
EXTERIOR



(USE RULER TO SCALE DIMENSIONS IN INCHES)

SCALE: 3/4

XXX DOOR
HIDDEN TRACK



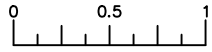
6

LOCK JAMB

9 ⁹/₁₆"
FRAME
DEPTH

ARCHETYPE LATCH WITH
FLUSH PULL HANDLES

EXTERIOR



(USE RULER TO SCALE DIMENSIONS IN INCHES)

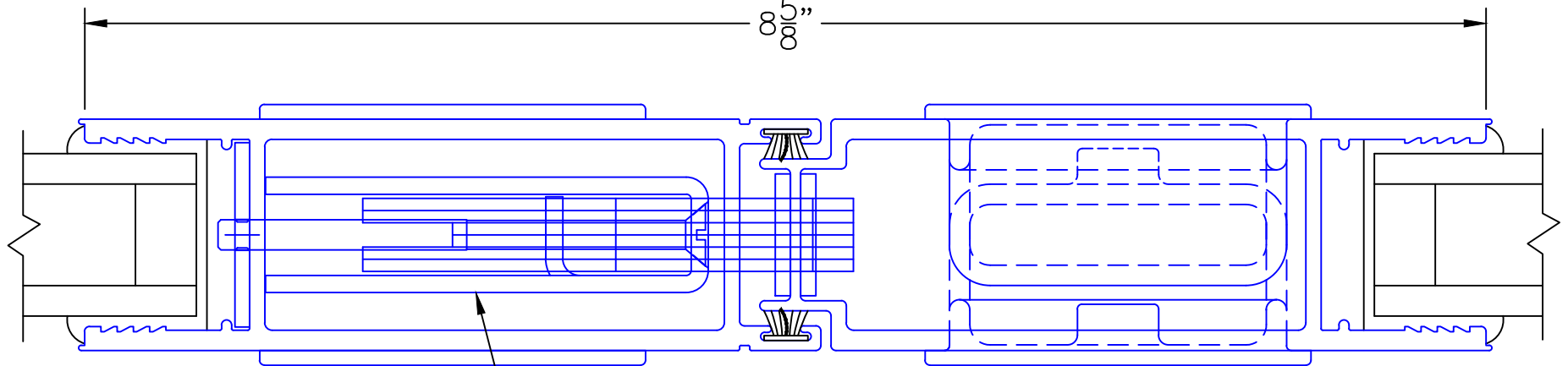
SCALE: FULL

XXXIXX DOOR
HIDDEN TRACK

7

MEETING STILES

85/8"



ARCHETYPE LATCH WITH
FLUSH PULL HANDLES

EXTERIOR